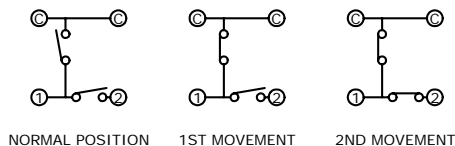
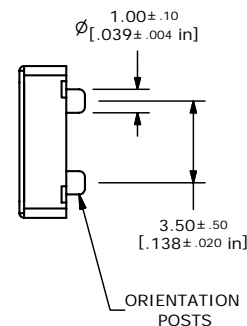
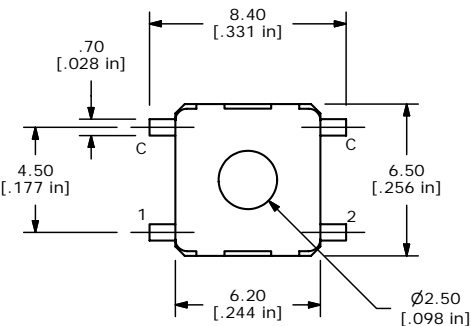


ISOMETRIC



CIRCUIT DIAGRAM



ORIENTATION POSTS

- NOTES:
1. ALL DIMENSIONS IN MM [INCH]
  2. GENERAL TOLERANCE: X.X=±0.4  
X.XX=±0.3
  3. CONTACT RESISTANCE: 200mΩ MAX.
  4. RATING: 30VDC, 20mA
  5. STROKE: 1ST-0.30±0.10  
2ND-0.55±0.15
  6. LIFE CYCLES: 10,000 MIN
  - ▲7. FORCES: 1ST- 100± 40gf  
2ND- 250± 80gf
  8. 2002/95/EC (ROHS) COMPLIANT
  - ▲9. PACKAGING: TAPE AND REEL, 1200 PER REEL
  10. ▲DENOTES CRITICAL DIMENSIONS
  11. CONTACT MATERIAL: SILVER



B	16750	UPDATED NOTES	12/13/06	TN
A	16746	RELEASED FOR PRODUCTION	12/11/06	TN
REV	PCR NO	DESCRIPTION	DATE	BY

TITLE	TL3350AF100Q			
-------	--------------	--	--	--

SCALE	4:1	DATE	12/13/2006	DR	TN	DWG	P010685	REV	B
-------	-----	------	------------	----	----	-----	---------	-----	---

THE INFORMATION CONTAINED IN THIS DOCUMENT IS PROPRIETARY TO E-SWITCH AND IS NOT TO BE COPIED OR TRANSFERRED