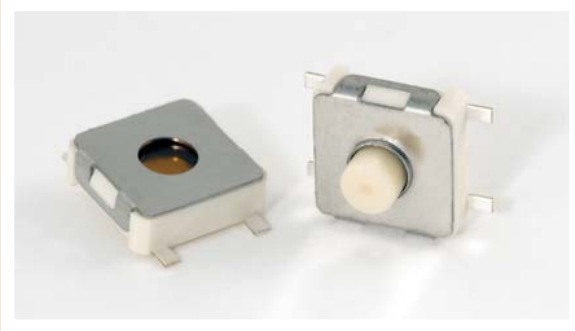




SERIES TL 3350 SWITCHES

TACT SWITCHES SMT - DUAL ACTION



FEATURES & BENEFITS

- ▶ Dual Action Tact Switch
- ▶ Positive tactile feedback in 2 distinct positions
- ▶ Low profile, SMT design
- ▶ With or without actuator

APPLICATIONS/MARKETS

- ▶ Telecommunications
- ▶ Consumer Electronics
- ▶ Audio/visual
- ▶ Medical
- ▶ Testing/instrumentation
- ▶ Computer/servers/peripherals

SPECIFICATIONS

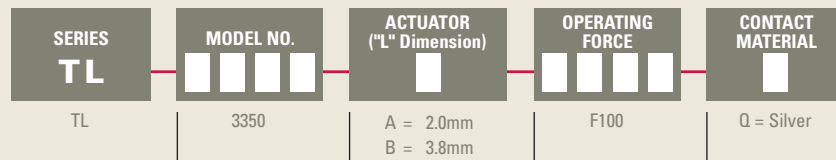
Contact Rating:	20mA @ 30 VDC
Life Expectancy:	10,000 cycles
Contact Resistance:	200mΩ
Insulation Resistance:	50MΩ min.
Dielectric Strength:	250 VAC
Actuation Force:	100± 40g 1st circuit 250± 80g 2nd circuit
Operating Temperature:	-20°C to 70°C
Travel:	0.30+/-0.10mm 1st circuit 0.55+/-0.15mm 2nd circuit

MATERIALS

Actuator:	Nylon
Base:	Nylon
Cover:	Stainless Steel
Terminals:	Copper alloy, plated



HOW TO ORDER

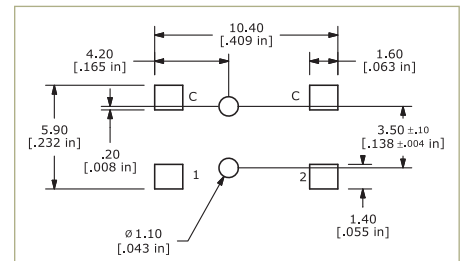
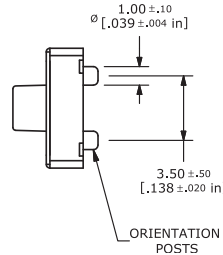
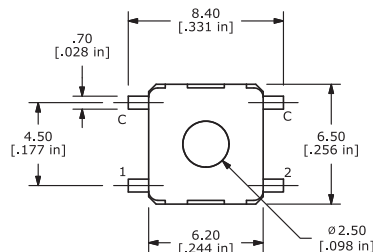
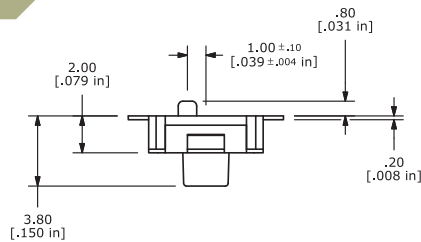


Example Ordering Number

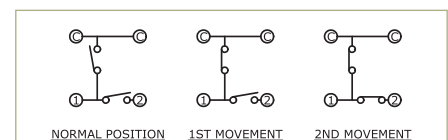
TL-3350-A-F100-Q

Specifications subject to change without notice.

TL 3350



P.C. MOUNTING



SCHEMATIC