

SERIES TL 6700 SWITCHES

SEALED SMT TACT SWITCHES



SPECIFICATIONS

Contact Rating:	50mA @ 12 VDC
Life Expectancy:	100,000 cycles typical
Contact Resistance:	100mΩ max. initial @ 2-4 VDC
Insulation Resistance:	100mΩ min.
Dielectric Strength:	250 VAC
Actuation Force:	160 ± 50 gf, 260 ± 50 gf
Operating Temperature:	-20°C to 70°C
Travel:	0.35mm ±0.2

MATERIALS

Actuator:	Silicone Rubber
Base:	Nylon
Cover:	Stainless Steel
Terminals:	Copper alloy, plated

FEATURES & BENEFITS

- ▶ Process Sealed SMT Tact Switch
- ▶ Improved Seal Design
- ▶ Protected against more aggressive wash processes

APPLICATIONS/MARKETS

- ▶ Telecommunications
- ▶ Consumer Electronics
- ▶ Audio/visual
- ▶ Medical
- ▶ Testing/instrumentation
- ▶ Computer/servers/peripherals

HOW TO ORDER

SERIES	MODEL NO.	ACTUATOR ("L" Dimension)	OPERATING FORCE	CONTACT MATERIAL	TERMINATION
TL	6700	(None) = Flush A = 3.40mm	F160 F260	Q = Silver	G = Gull Wing J = J Lead

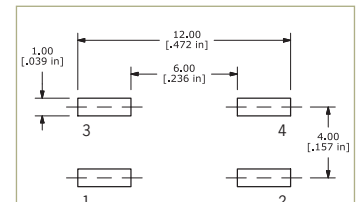
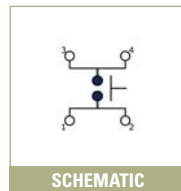
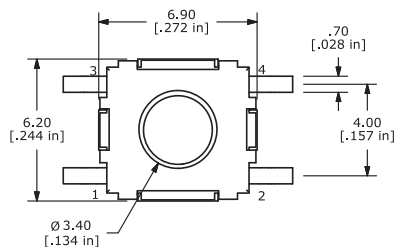
Example Ordering Number

TL-6700-F160-Q-G

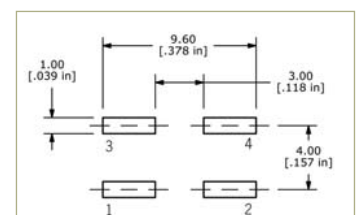
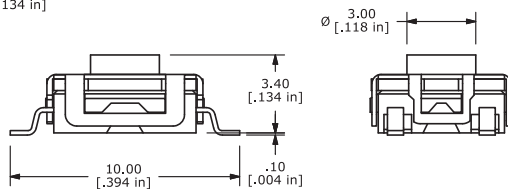
Specifications subject to change without notice.

TL 6700

GULL WING TERMINATION



GULL WING - P.C. MOUNTING



J LEAD - P.C. MOUNTING