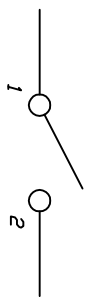
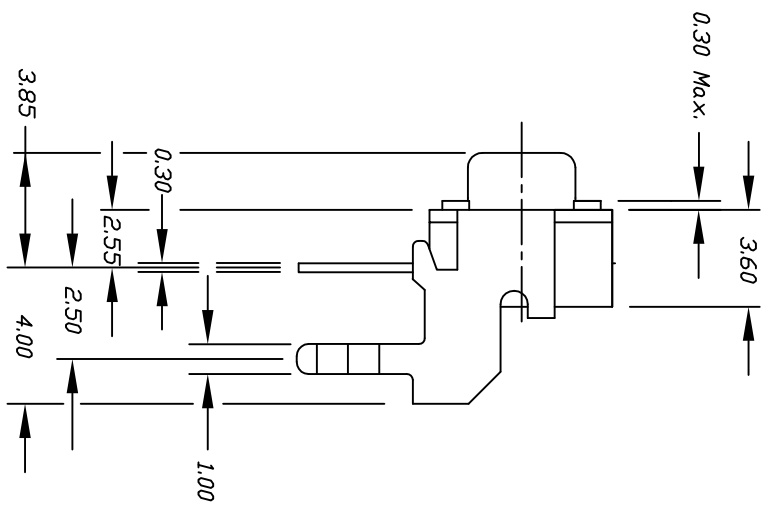


RECOMMEND P.C.B. LAYOUT



CIRCUIT: SPST  
CONTACT CONFIGURATION



NOTES:

1. ALL DIMENSIONS IN MM
2. TERM. NDS. FOR REF ONLY
3. RATING: 50mA, 12V DC
4. TRAVEL: 0.25±0.1mm
5. 2002/95/EC (ROHS) COMPLIANT

REV.	PCR	DESCRIPTION	DATE	CHKD
C	18677	LEG TOLERANCE WAS +/-0.1	10/9/09	BLR
B		REVISED & REDRAWN	11/6/96	MM

TOLERANCES	
0.0	±0.4
0.00	±0.25

TITLE		E-SWITCH®		LAMB INDUSTRIES	
SCALE		DATE		DR	
4:1		10/9/09		BLR	
DATE		REV		DWG	
10/9/09		C		P010306	
TL 1105V F250 Q -Red Actuator					

THE INFORMATION CONTAINED IN THIS DOCUMENT IS PROPRIETARY TO E-SWITCH AND IS NOT TO BE COPIED OR TRANSFERRED