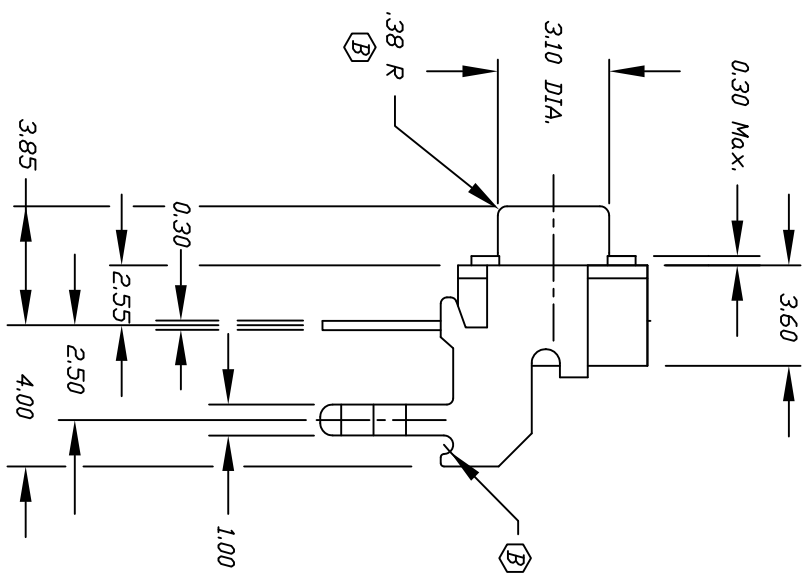
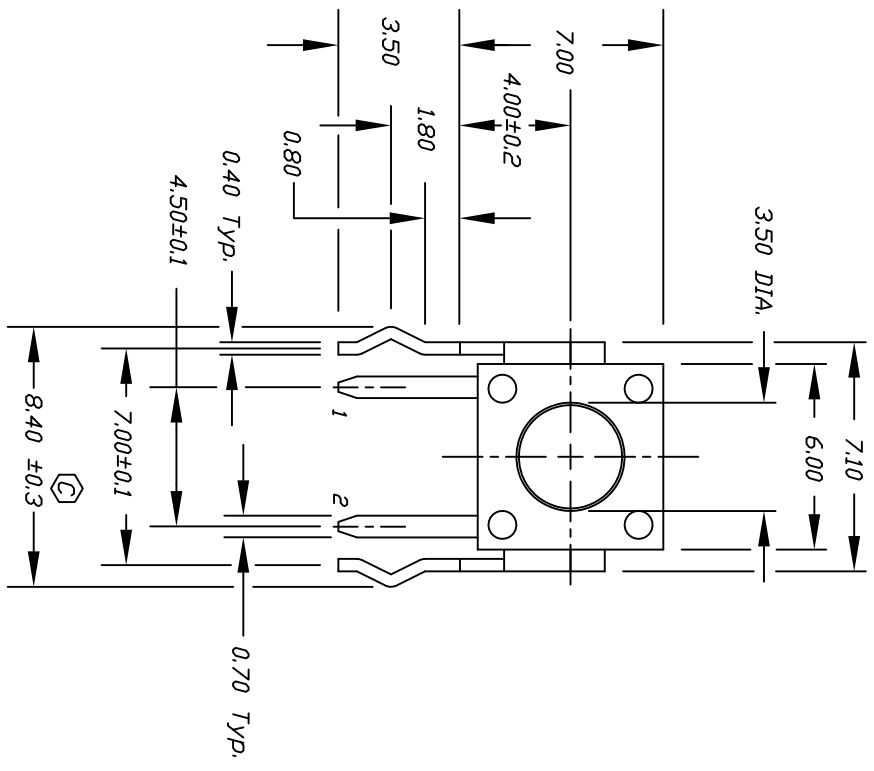
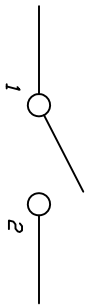


RECOMMEND P.C.B. LAYOUT



- NOTES:
1. ALL DIMENSIONS IN MM
 2. TERM. NOS. FOR REF ONLY
 3. RATING: 50mA, 12V DC
 4. TRAVEL: 0.25 ± 0.1mm
 5. 2002/95/EC (ROHS) COMPLIANT



CIRCUIT: SPST
CONTACT CONFIGURATION

| | | | | |
|------|-------|-----------------------------|----------|------|
| C | 18677 | LEG TOLERANCE WAS +/-0.1 | 10/9/09 | BLR |
| B | | .38 R WAS .18R, ADDED NOTCH | 12/18/00 | CB |
| A | | RELEASED FOR PRODUCTION | 11/10/97 | MM |
| REV. | PCR | DESCRIPTION | DATE | CHKD |

| TOLERANCES | |
|------------|-------|
| 0.0 | ±0.4 |
| 0.00 | ±0.25 |

| | | | | | |
|------------------------------|---------|----------|---------|------|--|
| TITLE | | E-SWITCH | | LAMB | |
| SCALE | DATE | DR | DWG | REV | |
| 4:1 | 10/9/09 | MM | P020304 | C | |
| TL 1105V F100 Q (STD. BRCKT) | | | | | |