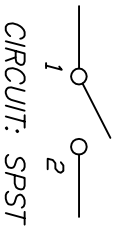


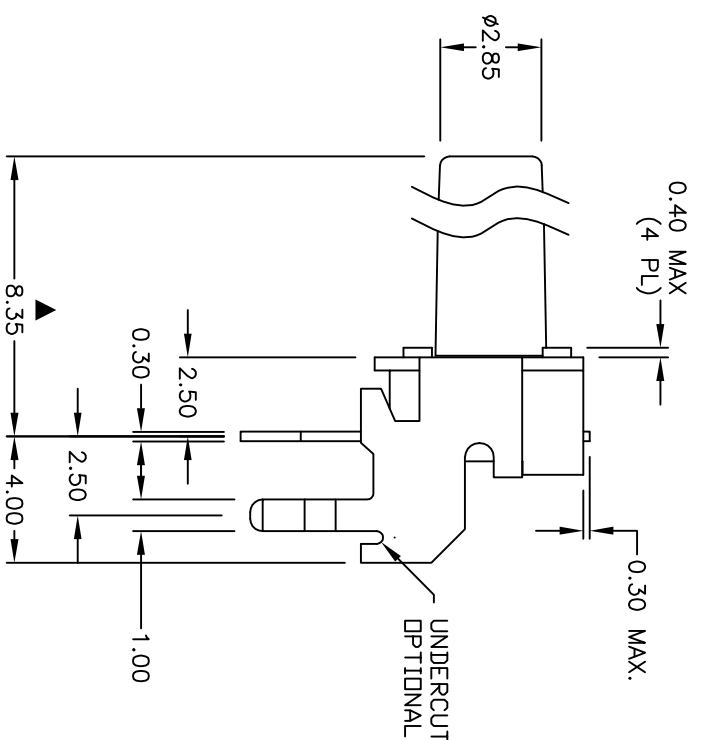
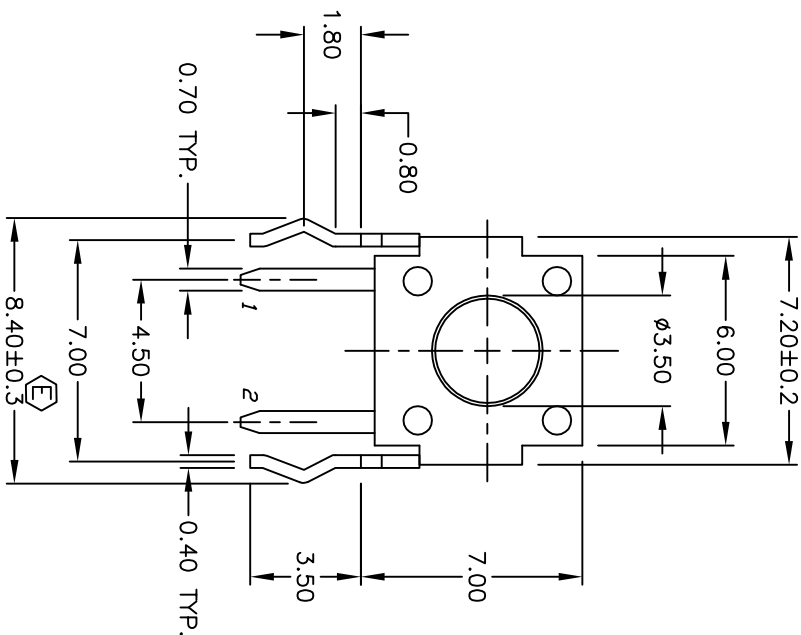
RECOMMENDED P.C.B. LAYOUT



CIRCUIT: SPST

NOTES:

- 1. ALL DIMENSIONS IN MM
- 2. GENERAL TOLERANCE: X.X=±0.4
X.XX=±0.25
- 3. TERM. NOS. FOR REF. ONLY
- 4. RATING: 50mA, @12V DC
- 5. TRAVEL: 0.25±0.1mm
- 6. OPERATING FORCE: 160±50gf
- 7. CONTACT RESISTANCE: 100 milliohms Max.
- 8. ELECTRICAL LIFE: 100,000 CYCLES MIN.
- 9. ▲ DENOTES CRITICAL PARAMETER
- 10. ▲ ACTUATOR COLOR: BLACK
- 11. HOUSING COLOR: BLACK
- 12. 2002/95/EC (ROHS) COMPLIANT.



REV.	ECN NO.	DESCRIPTION	DATE	CHKD
E	18313	LEG TOLERANCE WAS +/- 0.1	11/11/08	BLR
D	12370	REVISED AND REDRAWN	8/14/02	CJB

SCALE	DATE	DR	DWG	REV
4:1	11/11/08	BLR	P010299	E

TITLE: TL 1105 S F160 Q

DR: BLR

DWG: P010299

REV: E