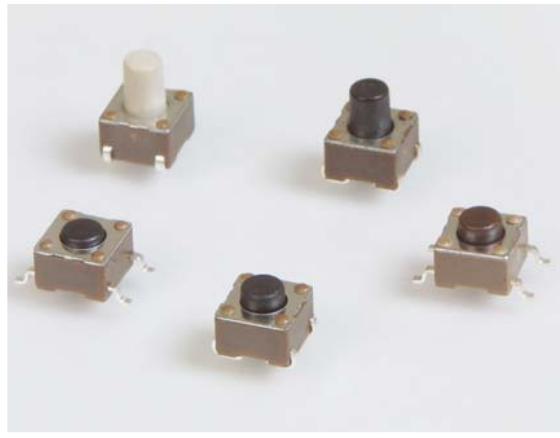




# SERIES TL 3301 SWITCHES

## TACT SWITCHES SMT - 6mm x 6mm



### SPECIFICATIONS

Contact Rating:	50mA @ 12 VDC
Life Expectancy:	100,000 cycles typical
Contact Resistance:	100mΩ max. initial @ 2-4 VDC 100mA for both silver and gold plated contacts
Insulation Resistance:	100MΩ min.
Dielectric Strength:	250 VAC
Actuation Force:	100 ± 50 gf, 160 ± 50 gf, 260 ± 50 gf
Operating Temperature:	-20°C to 70°C
Travel:	0.25 Typ

### MATERIALS

Housing:	PPS or Nylon
Actuator:	PPS or Nylon
Bracket/Cover:	Tin plated steel
Contacts:	Gold or silver plated phosphor bronze
Terminals:	Gold or silver plated brass

### FEATURES & BENEFITS

- ▶ SMT Design
- ▶ Compatible with lead-free soldering

### APPLICATIONS/MARKETS

- ▶ Telecommunications
- ▶ Consumer Electronics
- ▶ Audio/visual
- ▶ Medical
- ▶ Testing/instrumentation
- ▶ Computer/servers/peripherals

### HOW TO ORDER

SERIES	MODEL NO.	ACTUATOR* ("L" Dimension)	OPERATING FORCE	CONTACT MATERIAL	TERMINATION
TL LL	3301	T = 2.4mm <input type="checkbox"/> SP = 2.8mm <input type="checkbox"/> N = 4.3mm A = 5.0mm E = 7.3mm F = 7.0mm C = 8.0mm P = 8.5mm B = 9.5mm D = 13.0mm	F100 F160 F260	Q = Silver R = Gold	G = Gull Wing J = J-Lead

- Square Snap-on Actuator Head  
"L" Dimension is 7.5mm

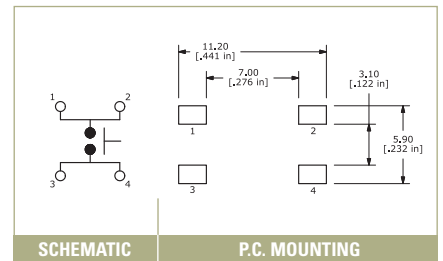
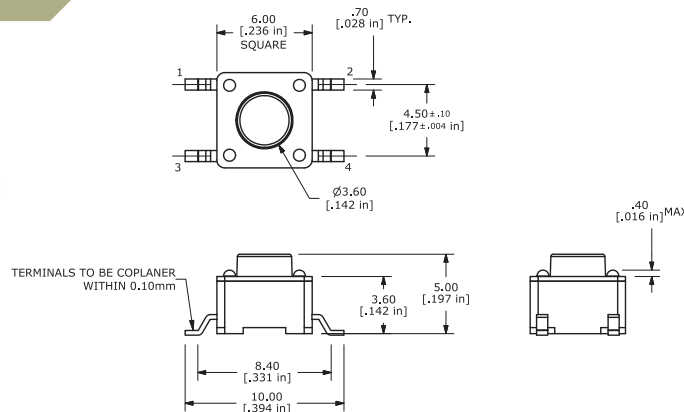
**\* Note: Not all actuator lengths available with tape and reel packaging. Please contact E-Switch to confirm availability.**

**Example Ordering Number**  
TL-3301-N-F160-Q-J

Specifications subject to change without notice.

## LL 3301

### LONG LIFE



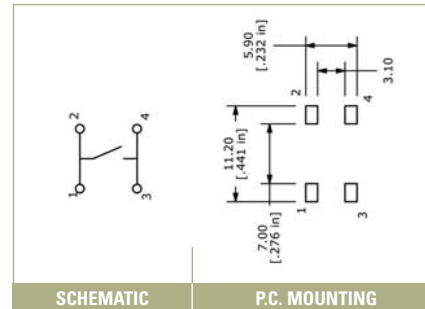
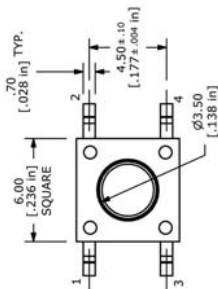
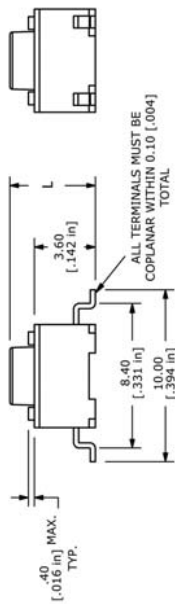
# SERIES TL 3301 SWITCHES

TACT SWITCHES SMT - 6mm x 6mm

TACT SWITCHES

## TL 3301

GULL WING TERMINATION



NAVIGATION SWITCHES

PUSHBUTTON SWITCHES

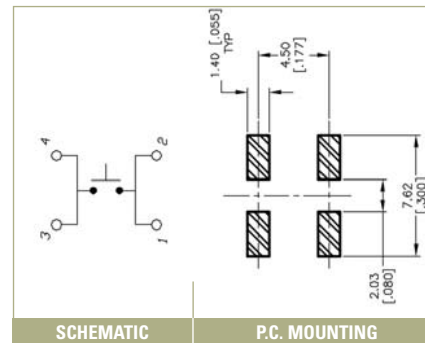
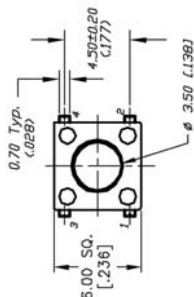
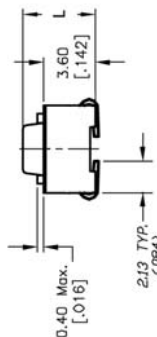
TOGGLE SWITCHES

ROCKER SWITCHES

SLIDE SWITCHES

## TL 3301

J-LEAD TERMINATION



SNAP-ACTION SWITCHES

DIP SWITCHES

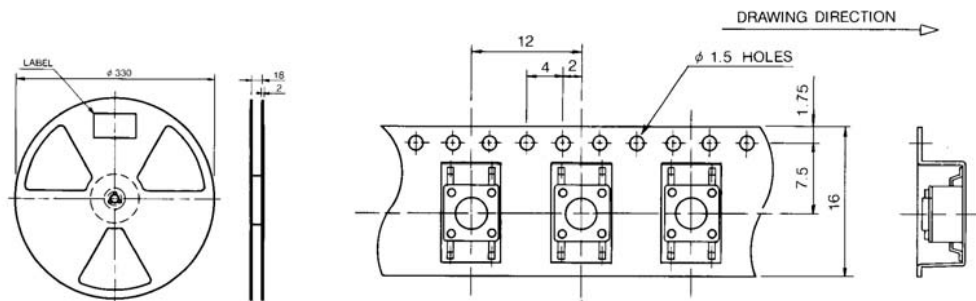
KEYLOCK SWITCHES

ROTARY SWITCHES

DETECTOR SWITCHES

CAP OPTIONS

## TL 3301 STANDARD REEL



Note: Contact E-Switch for additional packaging options.