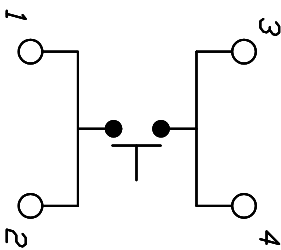
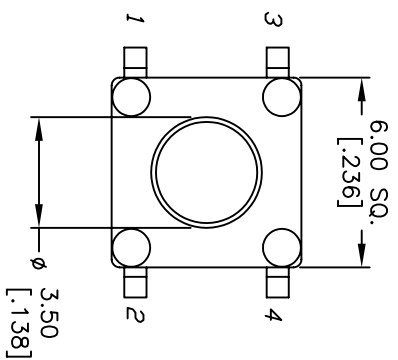


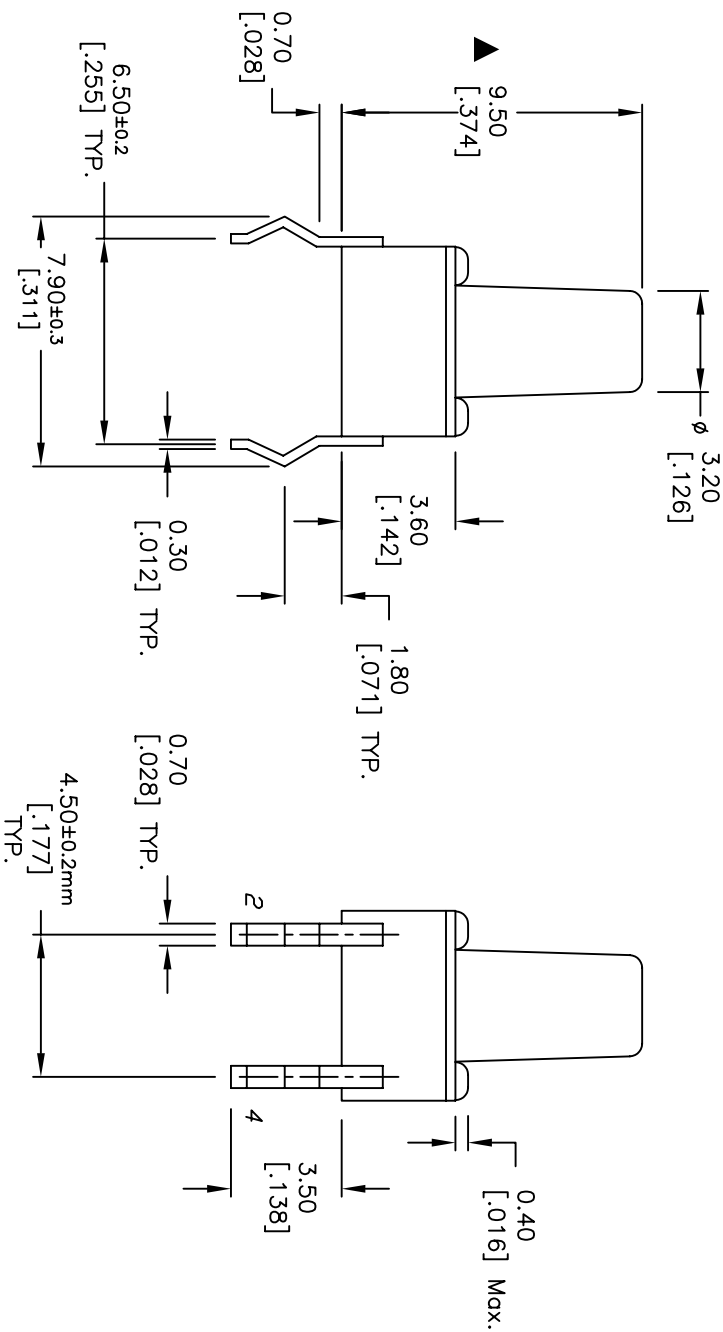
RECOMMENDED P.C.B. LAYOUT

SCALE 3:1



NOTES:

1. ALL DIMENSIONS IN MM [INCH]
2. GENERAL TOLERANCE: X.X=±0.4
X.XX=±0.25
3. TERM. NOS. FOR REFERENCE ONLY.
4. RATINGS: 12VDC, 50mA
5. OPERATING FORCE: 160±50gf
6. TRAVEL: 0.25±0.1mm
7. CONTACT RESISTANCE: 100 mΩ Max.
8. DIELECTRIC STRENGTH: 250V RMS min.
9. INSULATION RESISTANCE: 100 Mega Ω min.
10. ELECTRICAL LIFE: 100,000 CYCLES min.
11. DESIGNATE MAJOR FEATURE:



E-SWITCH®

| | | | | |
|------|---------|---------------------|---------|------|
| REV. | ECN No. | DESCRIPTION | DATE | CHKD |
| C | 12190 | REVISED AND REDRAWN | 5/28/02 | CJB |

| | | | | | |
|----------------|-------|---------|----|---------|-----|
| TITLE | SCALE | DATE | DR | DWG | REV |
| TL1105B F160 Q | 4:1 | 5/28/02 | MM | P010003 | C |