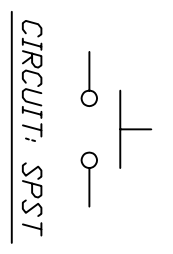
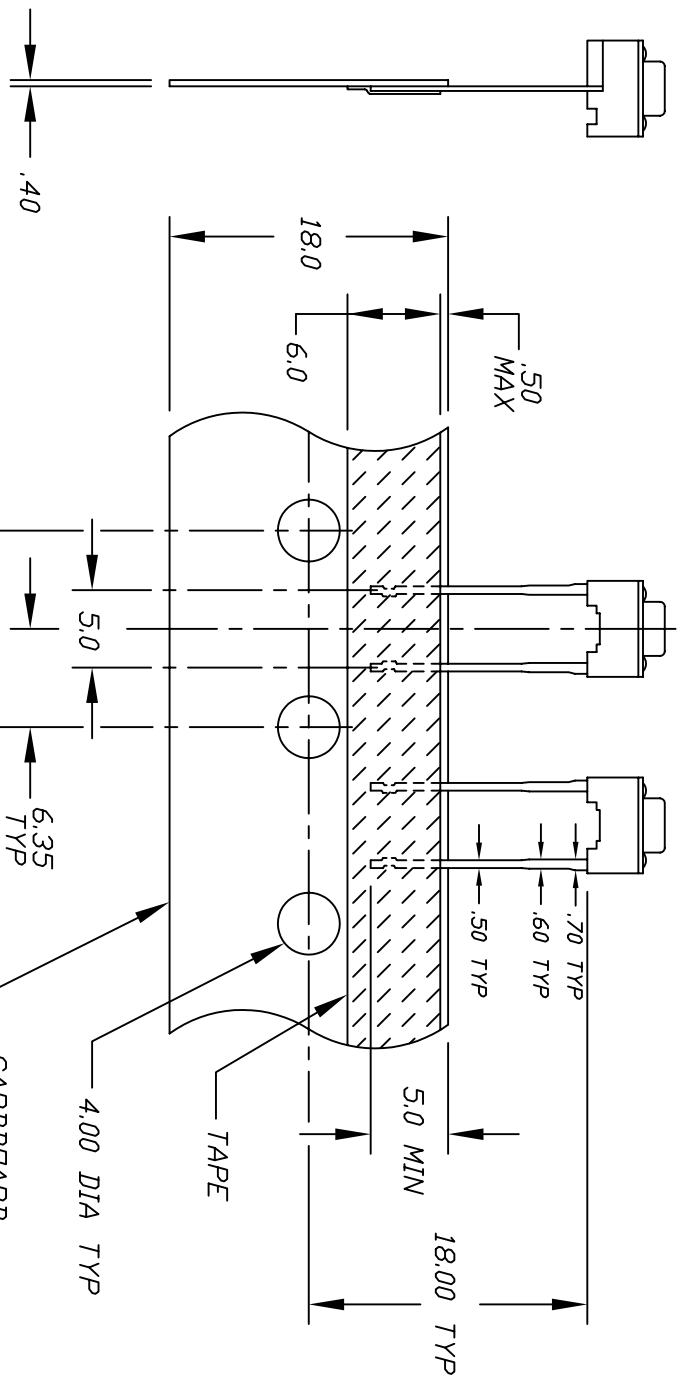


RECOMMEND P.C.B. HOLES



CIRCUIT: SPST
CONTACT CONFIGURATION

- NOTES:
1. ALL DIMENSIONS IN MM [INCH]
 2. GENERAL TOLERANCE: X.X=±0.4
X.XX=±0.25
 3. CONTACT RATING: 50mA @12V DC
 4. CONTACT MATERIAL: SILVER
 5. OPERATING FORCE: 160±50gf
 6. TRAVEL: 0.25 +0.2/-0.1
 7. CONTACT RESISTANCE: 100mILLI Ohms max.
 8. ELECTRICAL LIFE: 100,000 CYCLES
 9. PACKAGING: CARRIER IS FOLDED EVERY 25, (24) SWITCHES PER FOLD (1,000) SWITCHES PER BOX
 10. 2002/95/EC (ROHS) COMPLIANT
 11. ▲ DENOTES MAJOR DIMENSION.



B	UPDATE NOTE, .30 DIM TO .25	1/18/07	TN
A	RELEASED FOR PRODUCTION		
REV.	DESCRIPTION	DATE	CHKD

TOLERANCES	
0.0	±0.4
0.00	±0.25

TITLE		SCALE	DATE	DR	DWG	REV
E-SWITCH® TL594F160Q		2:1	1/18/2007	TN	P010562	B