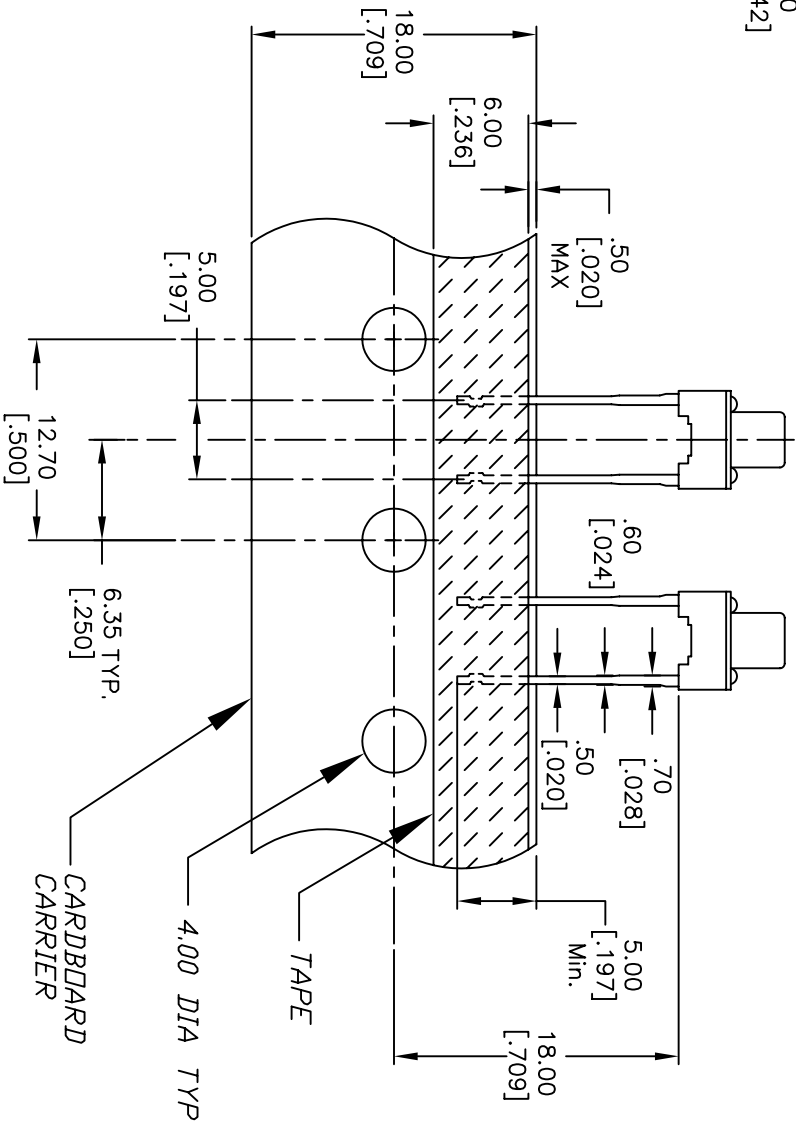
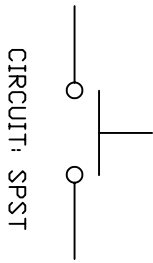


RECOMMENDED P.C.B. LAYOUT



- NOTES:
1. ALL DIMENSIONS IN MM [INCH]
  2. GENERAL TOLERANCE: X.X=±0.4 X.XX=±0.25
  3. CONTACT RATING: 50mA @12V DC
  - ▲4. CONTACT MATERIAL: SILVER
  - ▲5. OPERATING FORCE: 160±50gf
  6. TRAVEL: 0.25 +0.2/-0.1
  7. CONTACT RESISTANCE: 100mILLI Ohms max.
  8. ELECTRICAL LIFE: 100,000 CYCLES
  9. PACKAGING:  
CARRIER IS FOLDED EVERY 25 PITCHES (24) SWITCHES PER FOLD (1,000) SWITCHES PER BOX
  10. 2002/95/EC (ROHS) COMPLIANT
  11. ▲ DENOTES MAJOR DIMENSION.

C	16886	UPDATE NOTES, .30 DIM TO .25	1/18/07	TN
B	11927	REVISED AND REDRAWN	1/09/02	CB
REV.	ECN NO.	DESCRIPTION	DATE	CHKD

THE INFORMATION CONTAINED IN THIS DOCUMENT IS PROPRIETARY TO E-SWITCH AND IS NOT TO BE COPIED OR TRANSMERRED

TITLE		DATE		DR	DWG	REV
E-SWITCH® TL59FF160Q		1/18/07		TN	P010569	C
SCALE						
2:1						