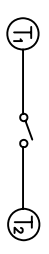
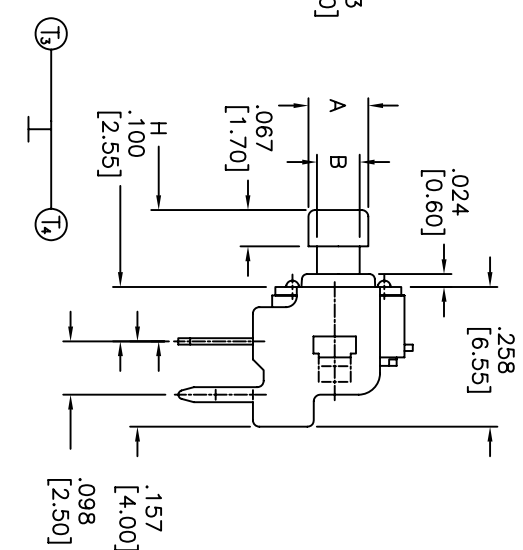
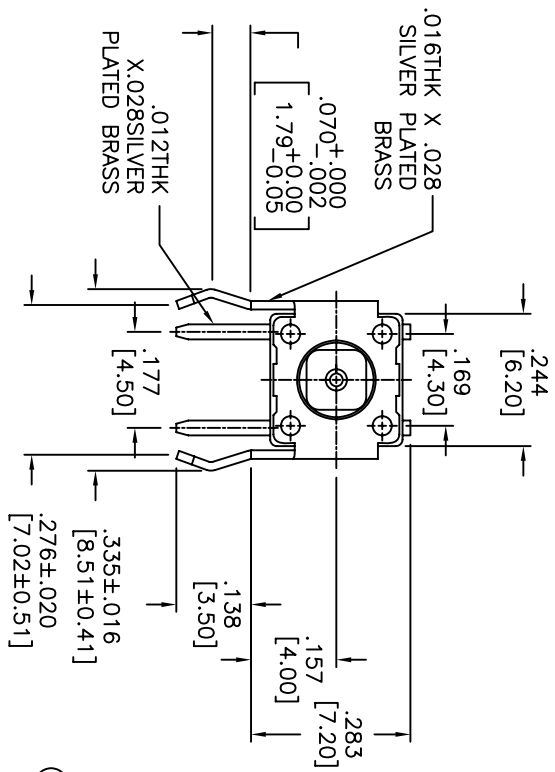


ADTSA644LV
ADTSA=RIGHT ANGLE TYPE
TACTILE SWITCH
PROD. SIZE
6=6X6mm
DIMENSION H:
44=.242 [6.15]
48=.242 [6.15]

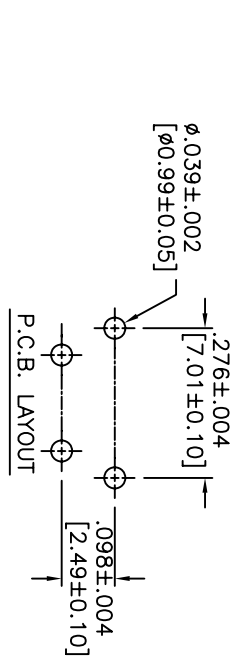
SOLDERING:
V=LEAD FREE
COLOR OF STEM FOR FORCE
N=BROWN, 160gf
R=RED, 260gf
S=SALMON, 320gf

PART NO.	DIM. A	DIM. B
ADTSA644*V	.095	.063
ADTSA648*V	.110	.079

DATE	SYM	REVISION RECORD	DWN.	CK.



CIRCUIT DIAGRAM



APEM CONFIDENTIAL
THIS DOCUMENT CONTAINS INFORMATION WHICH IS THE EXCLUSIVE PROPERTY OF APEM COMPONENTS, INC. DISTRIBUTION, REPRODUCTION OR USE BY OTHERS IS NOT PERMITTED WITHOUT THE EXPRESS WRITTEN CONSENT OF APEM COMPONENTS, INC.

TOLERANCES (EXCEPT AS NOTED)		TITLE	
DECIMAL	± .008	INCH	
FRACTIONAL	± 0/20	(MM)	
ANGULAR	± —	SCALE	
		DRAWN	CJD
		APPROVED	
		DATE	06/22/05
		DRAWING NUMBER	ADTSA64**V
		REV	—



DESCRIPTION: MECHANICAL CONTACT SWITCH
SPECIFICATIONS:
STORAGE TEMP. RANGE: -30°C TO +80°C
OPERATING TEMPERATURE RANGE: -25°C to +70°C
RATING: 50ma AT 12VDC
CONTACT RESISTANCE: 100mohm MAX.
INSULATION RESISTANCE: 100mohm MIN, 500VDC.
DIELECTRIC STRENGTH: 250VAC FOR 1 MINUTE
ELECTRICAL LIFE: 100,000 CYCLES FOR 320gf, 260gf
ELECTRICAL LIFE: 200,000 CYCLES FOR 160gf
SHOCK RESISTANCE: 50G PER METHOD 213B,
MIL-STD-202F
VIBRATION RESISTANCE: PASSES METHOD 201A,
MIL-STD-202F
CONTACT ARRANGEMENT: 1 POLE, 1 THROW.
MATERIALS:
COVER: STEEL, TIN PLATED
CONTACT DISC: PHOSPHOR BRONZE WITH SILVER CLADDING
TERMINAL: BRASS WITH SILVER PLATING
BASE: UL 94V-0 NYLON THERMOPLASTIC COLOR: BLACK
STEM: UL 94V-0 NYLON THERMOPLASTIC
SOLDERING:
IR REFLOW: 260°C MAX.
HAND SOLDERING: 350°C MAX. FOR 5 SECONDS MAX.
(30 WATT IRON MAX.)
RoHS COMPLIANT
LEAD FREE PROCESS COMPATIBLE