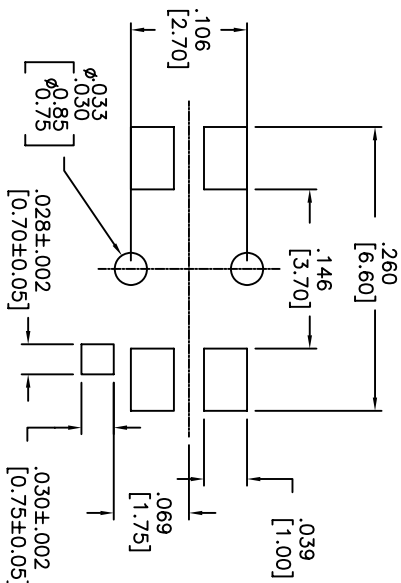
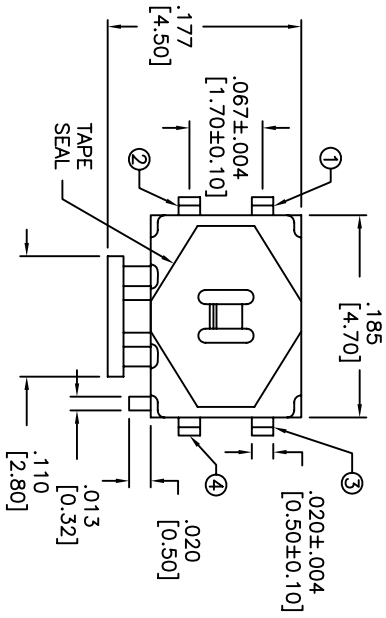
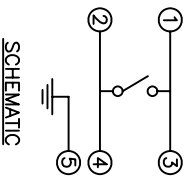
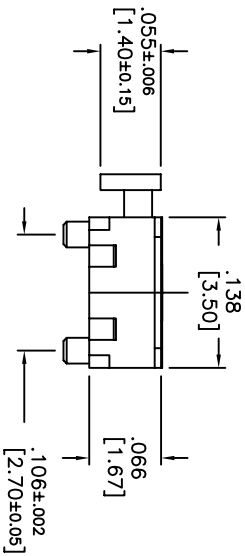
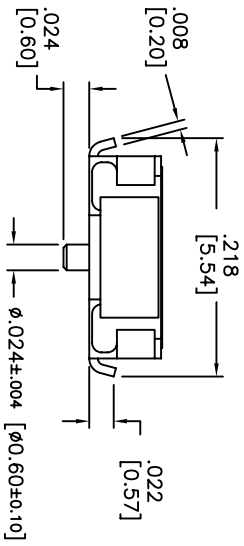


THIS DOCUMENT IS THE PROPERTY OF APDM COMPONENTS AND SHALL NOT BE COPIED, REPRODUCED, DISCLOSED OR SALE WITHOUT PERMISSION OF A DULY AUTHORIZED REPRESENTATIVE OF APDM COMPONENTS INC.



P.C. LAYOUT
UNLESS OTHERWISE SPECIFIED
P.C. TOLERANCES ARE ±.004 [0.10]



DATE	SYM	REVISION RECORD	DWN.	CK.

DESCRIPTION: SPST, MINIATURE SIDE PUSH SWITCH WITH TAPE SEAL, GULLWING SURFACE MOUNT AND GROUNDING TERMINAL.

SPECIFICATIONS:

CONTACT RATING: 50mA @ 12VDC
INSULATION RESISTANCE: 100 MOHMS MIN. (500VDC)

DIELECTRIC STRENGTH: 250VAC FOR 1 MINUTE
CONTACT RESISTANCE: 100 MOHMS MAX.
SHOCK RESISTANCE: 50G PER METHOD 213B.

MIL-STD-202F

VIBRATION RESISTANCE: PASSES METHOD 201A, MIL-STD-202F

ELECTRICAL LIFE:

100,000 CYCLES MIN.

OPERATING FORCE: 220 ±98 gf

TRAVEL: .012 ±.006 [0.30 ±0.15]

OPERATING TEMP. RANGE: -25°C TO +70°C

STORAGE TEMP. RANGE: -30°C TO +80°C

MATERIALS

COVER: STAINLESS STEEL.

CONTACT DISK: STAINLESS STEEL.

TERMINAL: BRASS WITH SILVER PLATING.

BASE: LCP HIGH-TEMP. THERMOPLASTIC.

COLOR: BLACK.

STEM: LCP HIGH-TEMP. THERMOPLASTIC, COLOR: BLACK.

TAPE SEAL: TEFLON

LEAD FREE PROCESS COMPATIBLE

HAND SOLDERING: 30 WATT IRON AT 350°C

FOR 5 SECONDS

IR REFLOW: 255°C MAX

<p>Q.A. INSECT: DESIGNATES CRITICAL DIMENSION</p> <p>TOLERANCES (UNLESS OTHERWISE SPECIFIED): X.XX±.0008 [0.20] X.XXX±.0008 [0.20] ANGLE = 40.5°</p>	<p>APDM APDM COMPONENTS INC. 10000 WILLOW CREEK BLVD. FREMONT, CA 94538 TEL: 925-772-3534</p>	<p>PRN: CJD BR: PJD</p>
<p>DO NOT SCALE DRAWING NO. APTCLGTV</p>	<p>DATE: 1/11/07</p>	<p>REV: A</p>

1 2 3 4 5 6 7 8

A

B

C

D

E

A

B

C

D

E