

4

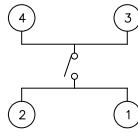
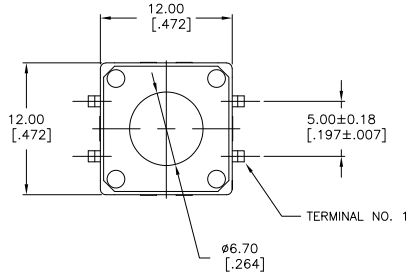
3

2

1

THIS DRAWING IS UNPUBLISHED. RELEASED FOR PUBLICATION 1437565-2, 1437565-2
 © COPYRIGHT 1437565-2 ALL RIGHTS RESERVED.

LOC	DIST	REVISIONS		
F	LNK	DESCRIPTION	DATE	BY
AD	00	REVISED PER ECO-11-004917	11MAR11	RK HMR



CIRCUIT DIAGRAM

TERMINAL NUMBERS ARE FOR REFERENCE ONLY AND DO NOT APPEAR ON SWITCHES

SPECIFICATIONS

MATERIALS

CASE: POLYESTER, BLACK
 COVER: POLYESTER
 ACTUATOR BUTTON: ACETAL, COLOR-SEE TABLE
 MOVING CONTACT: COPPER ALLOY, SILVER CLAD
 FIXED CONTACT/TERMINAL: COPPER ALLOY, SILVER PLATED

ELECTRICAL

MAX CONTACT RATING: 50MILLIAMPS@24V DC
 MIN CONTACT RATING: 10MICROAMPS@1V DC
 CONTACT RESISTANCE: 100 MILLIOHMS MAX
 INSULATION RESISTANCE: 100 MEGOHMS MIN @ 100VDC
 DIELECTRIC STRENGTH: 500 VAC 50/60 Hz FOR 1 MINUTE
 LIFE EXPECTANCY: 100,000 CYCLES MIN.

MECHANICAL

ACTUATOR OPERATING FORCE: SEE TABLE
 ACTUATOR TRAVEL: 0.30[0.12] APPROX.

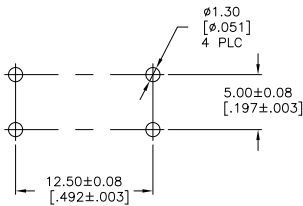
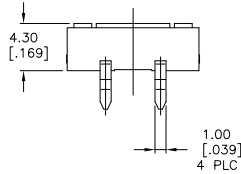
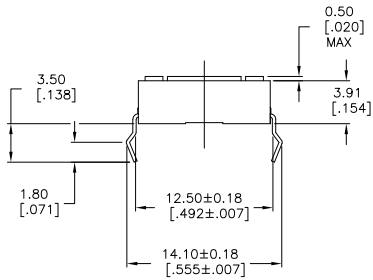
ENVIRONMENTAL

OPERATING TEMPERATURE: -35°C to +85°C
 STORAGE TEMPERATURE: -35°C to +85°C
 RESISTANCE TO SOLDER HEAT PER 109-202, COND B-265* FOR 10 SECONDS

SOLDERABILITY:

SPECIFICATION EIA-364-52, CLASS 1, CATEGORY 2

OBSELETE PARTS: OBSELETE CIS STREAMLINING PER D.RENAUD/D.SINISI



PC BOARD LAYOUT

1	OBSELETE	BLACK	160±30GF	FSM100	1437565-2
		RED	260±50GF	FSM100A	-1571139-1
		ACTUATOR COLOR	OPERATING FORCE	T&B PART NUMBER	PART NUMBER

THIS DRAWING IS A CONTROLLED DOCUMENT.		DR R BROWN	03APR02	TE Connectivity
DIMENSIONS: mm [INCHES]		CHK H WYTHKOOP	03APR02	
TOLERANCES UNLESS OTHERWISE SPECIFIED:		APPD H WYTHKOOP	03APR02	SWITCH, FSM100 PUSHBUTTON
0 PLC ± -		PRODUCT SPEC		
1 PLC ± -		APPLICATION SPEC		SIZE CASE CODE DRAWING NO
2 PLC ± -		WEIGHT		A2 00779 C=1437565-2
3 PLC ± -		MATERIAL		RESTRICTED TO
4 PLC ± -		FINISH		-
		CUSTOMER DRAWING		SCALE 4:1 SHEET 1 of 1 REV D5