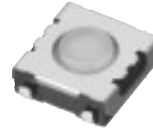


6 mm Square SMD Light Touch Switches

Type: **EVQQX**



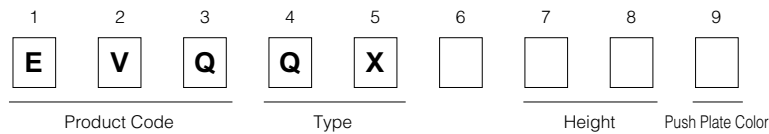
■ Features

- External dimensions: 6.2 mm×6.2 mm, Height 2.0 mm, 2.5 mm, 3.1 mm
- Reflow soldering
- Wide product variety

■ Recommended Applications

- Operation switches for portable electronic equipment (Camcorders, Portable audio players, etc.)
- Operating signal input switches for communication equipment.

■ Explanation of Part Numbers



■ Product Chart

Type with Push Plate	Soldering		Reflow soldering	
			Without sealing film	
	Packaging		Taping	
	Ground terminal		Without	With
	Operating Force	1.3 N	EVQQXP	EVQQXM
		1.6 N	EVQQXS	EVQQXN
		2.6 N	EVQQXT	EVQQXK

■ Specifications

Type	Snap action / Push-on type SPST	
Electrical	Rating	10 μ A 2 Vdc to 20 mA 15 Vdc (Resistive load)
	Contact Resistance	50 m Ω max.
	Insulation Resistance	50 M Ω min. (at 100 Vdc)
	Dielectric Withstanding Voltage	250 Vac for 1 minute
	Bouncing	3 ms max. (ON) 8 ms max. (OFF)
Mechanical	Operating Force	1.3 N \pm 0.4 N 1.6 N \pm 0.5 N
	Travel	0.25 mm \pm 0.10 mm
Endurance	Operating Life	1000000 cycles min. / 100000 cycles min.
Operating Temperature		-20 °C to +70 °C
Storage Temperature		-40 °C to +85 °C (Bulk) -20 °C to +60 °C (Taping)
Minimum Quantity/Packing Unit	H=2.0 mm	4000 pcs. Embossed Taping (Reel Pack)
	H=2.5 mm, 3.1 mm	2000 pcs. Embossed Taping (Reel Pack)
Quantity/Carton	H=2.0 mm	20000 pcs.
	H=2.5 mm, 3.1 mm	10000 pcs.

Note: Non washable

Design and specifications are each subject to change without notice. Ask factory for the current technical specifications before purchase and/or use. Should a safety concern arise regarding this product, please be sure to contact us immediately.

Apr. 2008

■ Dimensions in mm (not to scale)

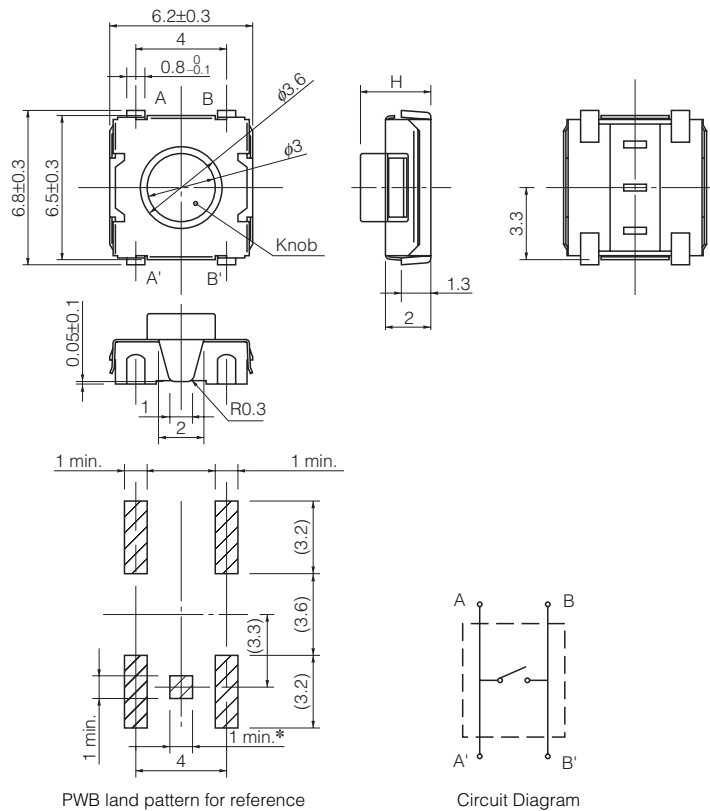
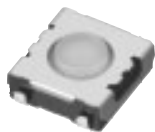
EVQQX

(Embossed Taping)

With push plate
Surface mount
For reflow soldering
With ground terminal
Without ground terminal

Notes:

1. Non-washable in solvents
2. Types with ground terminal available



PWB land pattern for reference

Circuit Diagram

Even though the ground terminal is not soldered the ground effect would be gained. However when soldering the ground terminal, do investigation sufficiently beforehand in the invasion of the flux. We recommend to connect the GND land shown in the switch spec with the GND of your P.W.B for withstanding electric static discharge.

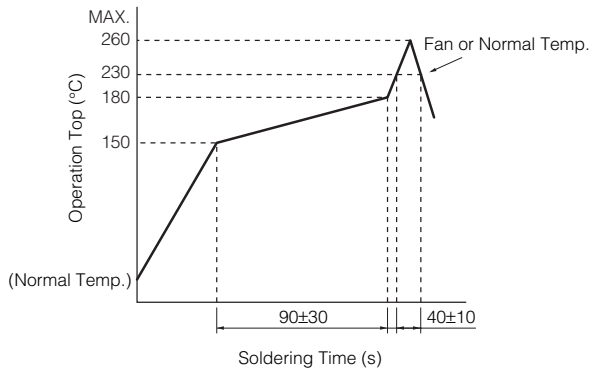
* This land not necessary when a ground terminal is not used.

Height
H
2.0±0.2
2.5±0.2
3.1 ^{+0.3} _{-0.1}

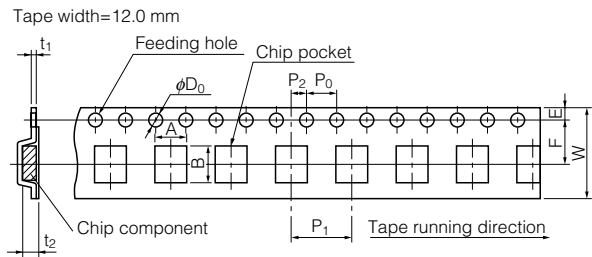
Part Numbers	Ground Terminal	Operating Force	H=Height	Push Plate Color	Operating Life
EVQXP01W	Without	1.3 N	2.0 mm	White	1000000 cycles
EVQXP02W	Without	1.3 N	2.5 mm	White	1000000 cycles
EVQXP03W	Without	1.3 N	3.1 mm	White	1000000 cycles
EVQXS01W	Without	1.6 N	2.0 mm	White	1000000 cycles
EVQXS02W	Without	1.6 N	2.5 mm	White	1000000 cycles
EVQXS03W	Without	1.6 N	3.1 mm	White	1000000 cycles
EVQXT01W	Without	2.6 N	2.0 mm	White	100000 cycles
EVQXT02W	Without	2.6 N	2.5 mm	White	100000 cycles
EVQXT03W	Without	2.6 N	3.1 mm	White	100000 cycles
EVQXM01W	With	1.3 N	2.0 mm	White	1000000 cycles
EVQXM02W	With	1.3 N	2.5 mm	White	1000000 cycles
EVQXM03W	With	1.3 N	3.1 mm	White	1000000 cycles
EVQXN01W	With	1.6 N	2.0 mm	White	1000000 cycles
EVQXN02W	With	1.6 N	2.5 mm	White	1000000 cycles
EVQXN03W	With	1.6 N	3.1 mm	White	1000000 cycles
EVQXK01W	With	2.6 N	2.0 mm	White	100000 cycles
EVQXK02W	With	2.6 N	2.5 mm	White	100000 cycles
EVQXK03W	With	2.6 N	3.1 mm	White	100000 cycles

Design and specifications are each subject to change without notice. Ask factory for the current technical specifications before purchase and/or use. Should a safety concern arise regarding this product, please be sure to contact us immediately.

Recommended Reflow Soldering Conditions



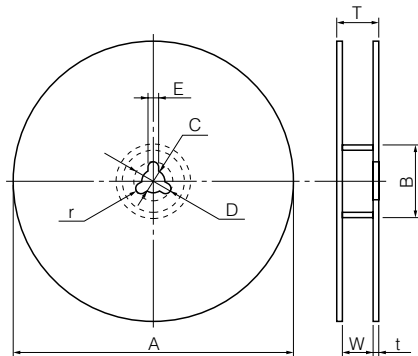
Embossed Carrier Taping



Unit: mm

Part No.	Height	A	B	W	F	E	P_1	P_2	P_0	D_0 Dia.	t_1	t_2
EVQQX	2.0	7.0±0.2	7.5±0.2	12.0±0.3	5.5±0.1	1.75±0.10	8.0±0.1	2.0±0.1	4.0±0.1	1.5 ^{+0.1} ₋₀	0.30±0.05	2.2±0.2
	2.5/3.1											3.2±0.2

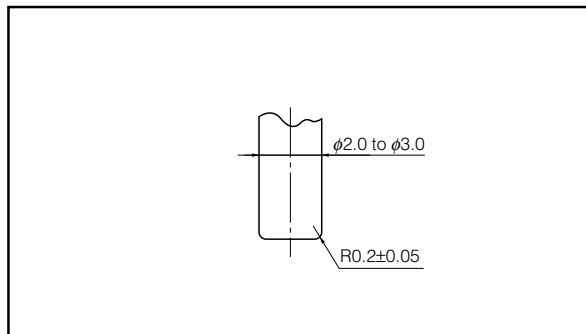
Standard Reel Dimensions in mm (not to scale)



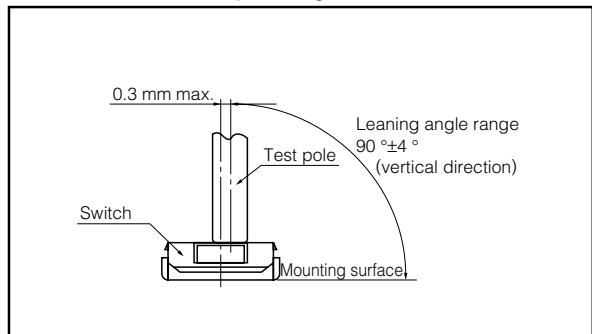
Item	A	B	C	D	E
Rate (mm)	φ370.0±2.0	φ50.0 min.	φ13.0±0.5	φ21.0±1.0	2.0±0.5

Item	W	T	t	r
Rate (mm)	14.0±1.5	—	1.0 to 3.0	1.0±0.5

Recommended Shape of Test Pole



Recommended Operating Conditions



Design and specifications are each subject to change without notice. Ask factory for the current technical specifications before purchase and/or use. Should a safety concern arise regarding this product, please be sure to contact us immediately.