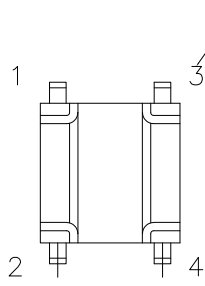
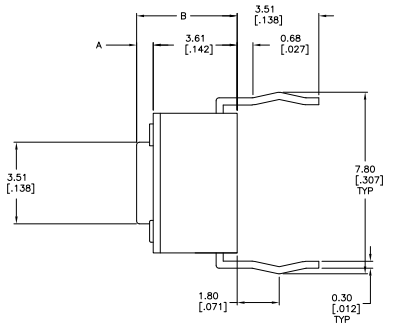
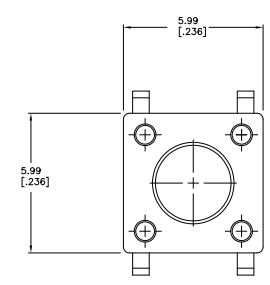
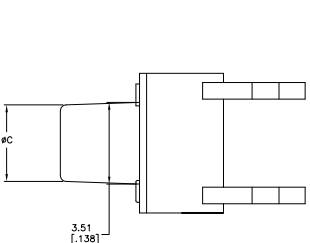


REV	DATE	DESCRIPTION	BY	CHK	APP
AD	00				
A	02-06-2027				

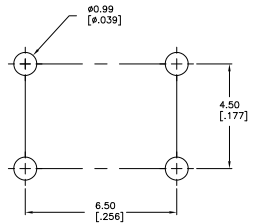


TERMINAL NUMBER

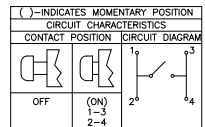
**SPECIFICATIONS:**  
**MATERIALS:**  
 CASE: NYLON 66 UL94HB, 30% GF-BLACK  
 ACTUATOR: NYLON OR PPS UL94V-0, SEE P/N TABLE  
 COVER: STEEL-TIN PLATE  
 MOVING CONTACT: COPPER ALLOY-SILVER FINISH  
 FIXED CONTACT/TERMINAL: COPPER ALLOY-SILVER OVER NICKEL FINISH  
**ELECTRICAL:**  
 MAX CONTACT RATING, 50MA@12VDC  
 MIN CONTACT RATING, 10 MICROAMP @ 1V DC  
 INITIAL CONTACT RESISTANCE, 100 MEGOHMS MAX  
 INSULATION RESISTANCE, 100 MEGOHM MIN. @ 100V DC  
 DIELECTRIC STRENGTH, 500 V AC FOR 1 MINUTE  
 LIFE EXPECTANCY, 100,000 CYCLES MIN (2 CYCLES PER SECOND AND 150% ACTUATOR FORCE), EXCEPT FOR THE 520 GF MODEL WHICH WOULD BE 50,000 CYCLES MIN.  
**MECHANICAL:**  
 ACTUATION FORCE, SEE TABLE  
 ACTUATION TRAVEL, .010 +.008/-.004  
 LIFE EXPECTANCY, 100,000 CYCLES MIN (2 CYCLES PER SECOND AND 150% ACTUATOR FORCE), EXCEPT FOR THE 520 GF MODEL WHICH WOULD BE 50,000 CYCLES MIN.  
**ENVIRONMENTAL:**  
 OPERATING TEMPERATURE, -35 TO +85 DEGREES C  
 STORAGE TEMPERATURE, -35 TO +85 DEGREES C  
 THERMAL SHOCK, PER EIA-364-32C, -35 TO +85 DEGREES C  
 SOLDERABILITY, PER EIA-364-52, CLASS 2, CATEGORY 1, CATEGORY 2, 95% MINIMUM COVERAGE  
 RESISTANCE TO SOLDER HEAT, PER 109-202, CONDITION B



VIEW A-A  
 FSM6J THRU FSM18J



RECOMMENDED HOLE LAYOUT  
 TOLERANCE ±0.05[0.002] UNLESS OTHERWISE NOTED



NYLON 6T	WHITE	520 +/-100 GF	3.09	.122	8.50	(.335)	4.90	(.193)	FSM18JAAH	3-1825910-7
NYLON 6T	WHITE	260 +/-50 GF	3.09	.122	8.50	(.335)	4.90	(.193)	FSM18JAH	3-1825910-6
PPS	BLACK	160 +/-50 GF	3.09	.122	8.50	(.335)	4.90	(.193)	FSM18JH	3-1825910-5
PPS	BROWN	100 +/-50 GF	3.09	.122	8.50	(.335)	4.90	(.193)	FSM18JLH	3-1825910-4
NYLON 6T	YELLOW	520 +/-100 GF	2.80	.110	17.00	(.669)	13.40	(.527)	FSM16JAAH	3-1825910-3
NYLON 6T	WHITE	260 +/-50 GF	2.80	.110	17.00	(.669)	13.40	(.527)	FSM16JAH	3-1825910-2
PPS	BLACK	160 +/-50 GF	2.80	.110	17.00	(.669)	13.40	(.527)	FSM16JH	3-1825910-1
PPS	BROWN	100 +/-50 GF	2.80	.110	17.00	(.669)	13.40	(.527)	FSM16JLH	3-1825910-0
NYLON 6T	YELLOW	520 +/-100 GF	2.87	.118	13.00	(.512)	9.40	(.370)	FSM14JAAH	2-1825910-9
NYLON 6T	WHITE	260 +/-50 GF	2.87	.118	13.00	(.512)	9.40	(.370)	FSM14JAH	2-1825910-8
PPS	BLACK	160 +/-50 GF	2.87	.118	13.00	(.512)	9.40	(.370)	FSM14JH	2-1825910-7
PPS	BROWN	100 +/-50 GF	2.87	.118	13.00	(.512)	9.40	(.370)	FSM14JLH	2-1825910-6
NYLON 6T	YELLOW	520 +/-100 GF	3.20	.126	8.00	(.315)	4.40	(.173)	FSM12JAAH	2-1825910-5
NYLON 6T	WHITE	260 +/-50 GF	3.20	.126	8.00	(.315)	4.40	(.173)	FSM12JAH	2-1825910-4
PPS	BLACK	160 +/-50 GF	3.20	.126	8.00	(.315)	4.40	(.173)	FSM12JH	2-1825910-3
PPS	BROWN	100 +/-50 GF	3.20	.126	8.00	(.315)	4.40	(.173)	FSM12JLH	2-1825910-2
NYLON 6T	YELLOW	520 +/-100 GF	3.25	.128	7.50	(.287)	3.70	(.146)	FSM10JAAH	2-1825910-0
NYLON 6T	WHITE	260 +/-50 GF	3.25	.128	7.50	(.287)	3.70	(.146)	FSM10JAH	1-1825910-9
PPS	BLACK	160 +/-50 GF	3.25	.128	7.50	(.287)	3.70	(.146)	FSM10JH	1-1825910-8
PPS	BROWN	100 +/-50 GF	3.25	.128	7.50	(.287)	3.70	(.146)	FSM10JLH	1-1825910-7
NYLON 6T	YELLOW	520 +/-100 GF	3.10	.122	9.50	(.374)	5.90	(.232)	FSM8JAAH	1-1825910-6
NYLON 6T	WHITE	260 +/-50 GF	3.10	.122	9.50	(.374)	5.90	(.232)	FSM8JAH	1-1825910-5
PPS	BLACK	160 +/-50 GF	3.10	.122	9.50	(.374)	5.90	(.232)	FSM8JH	1-1825910-4
PPS	BROWN	100 +/-50 GF	3.10	.122	9.50	(.374)	5.90	(.232)	FSM8JLH	1-1825910-3
NYLON 6T	YELLOW	520 +/-100 GF	3.30	.130	7.00	(.276)	3.40	(.134)	FSM6JAAH	1-1825910-2
NYLON 6T	WHITE	260 +/-50 GF	3.30	.130	7.00	(.276)	3.40	(.134)	FSM6JAH	1-1825910-1
PPS	BLACK	160 +/-50 GF	3.30	.130	7.00	(.276)	3.40	(.134)	FSM6JH	1-1825910-0
PPS	BROWN	100 +/-50 GF	3.30	.130	7.00	(.276)	3.40	(.134)	FSM6JLH	1825910-9
NYLON 6T	YELLOW	520 +/-100 GF	N/A		5.00	(.196)	1.40	(.055)	FSM4JAAH	1825910-8
NYLON 6T	WHITE	260 +/-50 GF	N/A		5.00	(.196)	1.40	(.055)	FSM4JAH	1825910-7
PPS	BLACK	160 +/-50 GF	N/A		5.00	(.196)	1.40	(.055)	FSM4JH	1825910-6
PPS	BROWN	100 +/-50 GF	N/A		5.00	(.196)	1.40	(.055)	FSM4JLH	1825910-5
NYLON 6T	YELLOW	520 +/-100 GF	N/A		4.30	(.169)	0.70	(.028)	FSM2JAAH	1825910-4
NYLON 6T	WHITE	260 +/-50 GF	N/A		4.30	(.169)	0.70	(.028)	FSM2JAH	1825910-3
PPS	BLACK	160 +/-50 GF	N/A		4.30	(.169)	0.70	(.028)	FSM2JH	1825910-2
PPS	BROWN	100 +/-50 GF	N/A		4.30	(.169)	0.70	(.028)	FSM2JLH	1825910-1

THIS DRAWING IS A CONTROLLED DOCUMENT		REV	DATE	DESCRIPTION	BY	CHK	APP
REV	DATE	DESCRIPTION	BY	CHK	APP		
A	00779	G=1825910					