

4

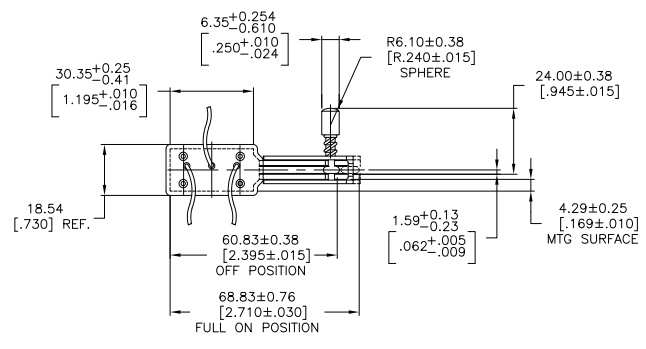
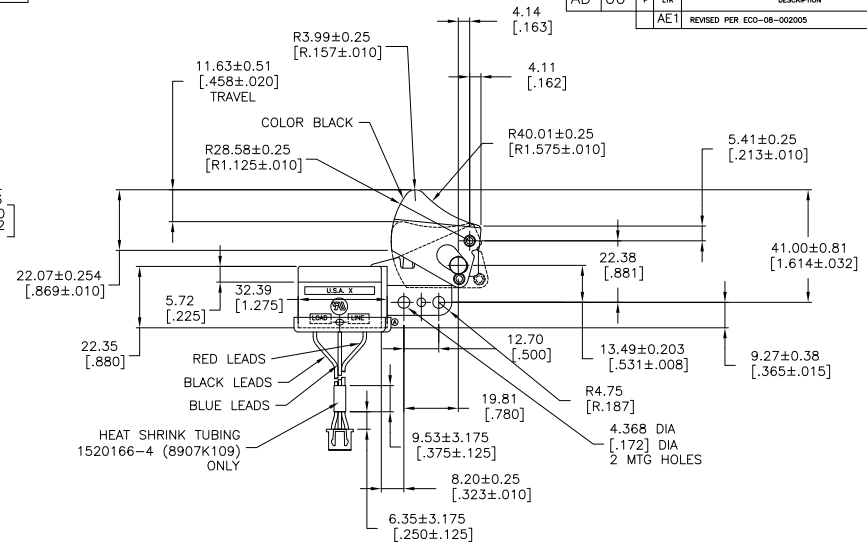
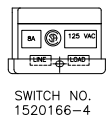
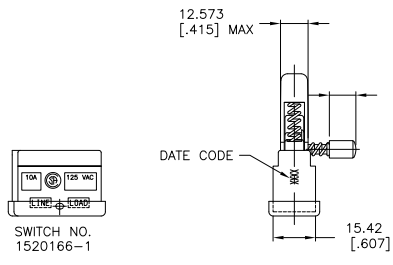
3

2

1

THIS DRAWING IS UNPUBLISHED. RELEASED FOR PUBLICATION.
 © COPYRIGHT BY TYCO ELECTRONICS CORPORATION. ALL RIGHTS RESERVED.

LOC	DIST	REVISIONS		DATE	BY	APP'D
AD	00	F	LR			
		AE1		REVISED PER ECO-08-002005	24 JAN 05	HMR FD



1. PUSH-IN TERMINAL OPENINGS TO RECEIVE #18 GA OR #20 GA STRANDED TINNED LEADS. WIRE STRIP LENGTH 6.35-10.16[.250-400].

1520166-4	8907K109	MADE OBSOLETE PER ECOG3G-0051-02 - SUPERCEDED BY 4-1520166-5.
1520166-1	8907K101	MADE OBSOLETE PER ECOG3G-0051-02 - SUPERCEDED BY 4-1520166-4.
TE SWITCH NO.	ARAB SWITCH NO.	

THIS DRAWING IS A CONTROLLED DOCUMENT.		DRN	W. Leonard D.	22MAY98	Tyco Electronics Corporation Harrisburg, Pa 17105-3608	
DIMENSIONS: mm [INCHES]		CHK	W. HANSON	30MAY98	NAME: M.R. DUMMER	
TOLERANCES UNLESS OTHERWISE SPECIFIED:		APPC			PRODUCT SPEC: 8907 SERIES-DUST RESISTANT OVERHANGING SWITCH	
0 PLG	± .	APPL			DPST 3 LEAD POTENTIOMETER CONNECTOR	
1 PLG	± .	APPL			Z-SPRING CONSTRUCTION	
2 PLG	± .	APPL			RESTRICTED TO	
3 PLG	± .13(0.005)	APPL			SIZE CASE CODE DRAWING NO	
4 PLG	± .	APPL			WEIGHT	
ANGLES	± .	APPL			A2 00779 C=1520166	
MATERIAL	FRESH	APPL			CUSTOMER DRAWING	
				SCALE	1:1	SHEET 1 of 32 REV AE1

AMP 1471-9 REV 31MM2000

91-680
131-318

1520166

A

4

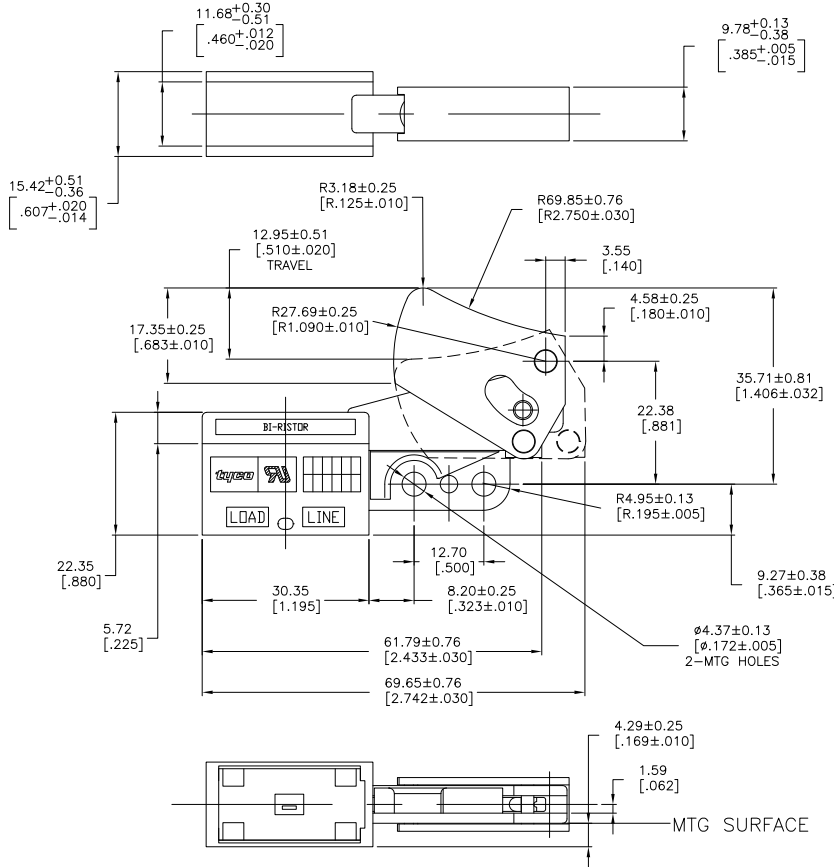
3

2

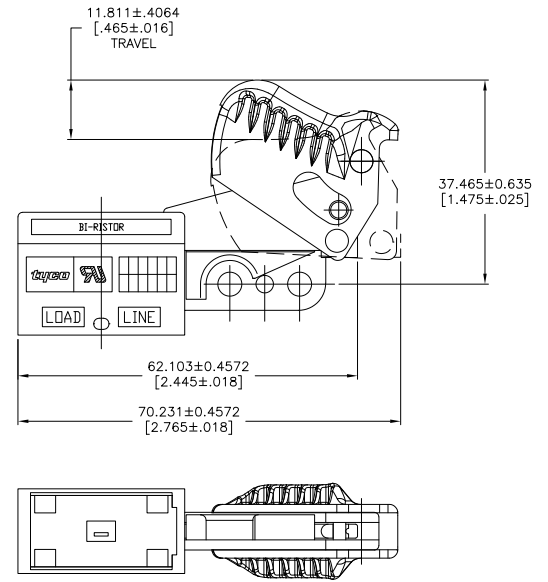
1

THIS DRAWING IS UNPUBLISHED. RELEASED FOR PUBLICATION. BY TYCO ELECTRONICS CORPORATION. ALL RIGHTS RESERVED.

LOC	DIST	REVISIONS		
AD	00	F	LN	DATE
		-	SEE SHEET 1	-



1. PUSH-IN TERMINAL OPENINGS TO RECEIVE #18 GA. OR #20 GA. STRANDED TIN DIPPED WIRE. WIRE STRIP LENGTH 6.35-10.16[.250-.400].



(8-1520166-5 ONLY)

TE SWITCH NO.	ARAB SWITCH NO.	RATING	TRIGGER COLOR
8-1520166-5	N/A	4.5A 250VAC	BLACK
7-1520166-5	8907K587	4.5A 250VAC	BLACK
2-1520166-9	8907K536	4.5A 250VAC	BLACK
2-1520166-8	8907K534	10A 125VAC	BLACK
1-1520166-6	8907K342	6A 125VAC	RED
1-1520166-4	8907K217	10A 125VAC	GRAY
1520166-2	8907K105	12A 125VAC	BLACK

91-439

THIS DRAWING IS A CONTROLLED DOCUMENT.

DIMENSIONS: mm [INCHES]	TOLERANCES UNLESS OTHERWISE SPECIFIED: 0 PLG ± .005 1 PLG ± .005 2 PLG ± .005 3 PLG ± .005 4 PLG ± .005 ANGLES ± 1° FINISH	DWG: W. HANSON 03NOV93 CHK: L. LEONARD 12NOV93 W. LEONARD 12NOV93 NAME: J. SMITH PRODUCT SPEC: APPLICATION SPEC: WEIGHT:	Tyco Electronics Corporation Harrisburg, Pa 17105-3608 8907 SERIES- OVERHANGING SWITCH DPST WITH INTERNAL QUICK CONNECT HEAT SINK, DISCRETE COMPONENT CONSTRUCTION SIZE: CASE CODE (FORMING NO): A200779C=1520166 RESTRICTED TO:
----------------------------	---	--	---

CUSTOMER DRAWING SCALE: 2:1 SHEET: 2 of 32 REV: AE1

AMP 1471-9 REV 31MAR2000

1520166

A

4

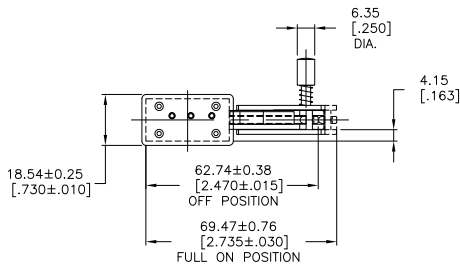
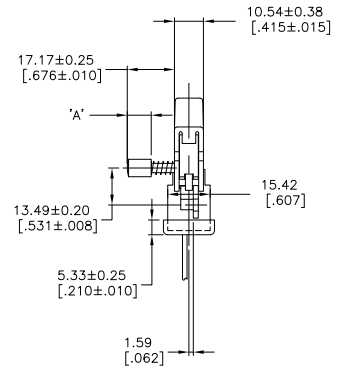
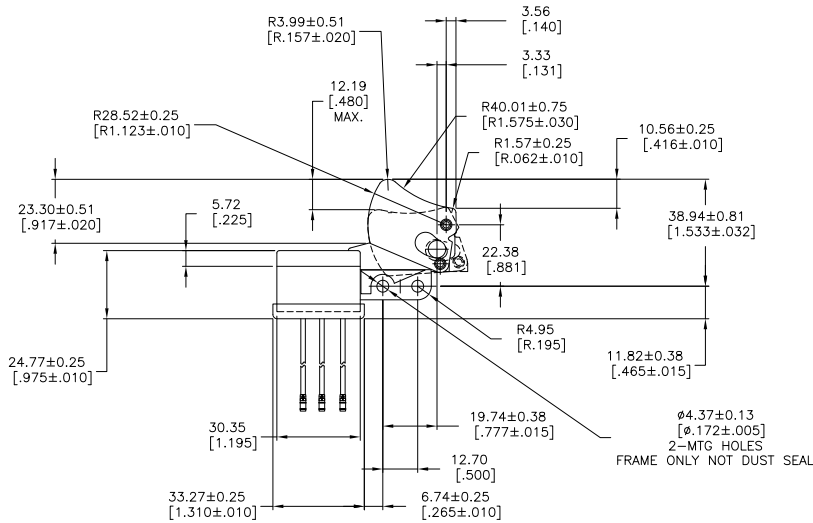
3

2

1

THIS DRAWING IS UNPUBLISHED. RELEASED FOR PUBLICATION
 BY TYCO ELECTRONICS CORPORATION. ALL RIGHTS RESERVED.

LOC	DIST	REVISIONS					
AD	00	F	LNK	DESCRIPTION	DATE	BY	APPD
				SEE SHEET 1			



1. PUSH-IN TERMINAL OPENINGS TO RECEIVE # 18 GA OR #20 GA STRANDED TINNED LEADS. WIRE STRIP LENGTH 6.35 - 10.16 [.250 - .400] . (PULL OUT FORCE MUST BE 5 LBS MIN.)
2. PRETRAVEL TO BE 3.81 [.150] MAX.
3. INITIAL OPERATING FORCE (MEASURED AT 1.27 [.050] DEFLECTION) IS 1.60 LBS ± 0.5 LBS.
4. HOLD ON FORCE (MEASURED AT 10.16 [.400] TRIGGER DEFLECTION) IS 5.10 LBS ± 1.0 LBS.
5. TOTAL TRAVEL TO BE 10.41 [.410] MIN.
6. FORCE TO ENGAGE LOCK PIN MUST BE 3.8 LBS MIN.

1-1520166-9	8907K393	MADE OBSOLETE PER ECOG3G-0051-02 - SUPERCEDED BY 4-1520166-3			
1520166-3	8907K108	BLACK	BLACK	.380 +.005/-.016 (9.65)	+.13/- .41
TE SWITCH NO.	ARAB SWITCH NO.	LOCK BUTTON COLOR	TRIGGER COLOR	DIM 'A'	

THIS DRAWING IS A CONTROLLED DOCUMENT.		DRN W. HANSON	OSMARDZ	91-346	
DIMENSIONS: mm [INCHES]		CHK -	NAME Tyco Electronics	Tyco Electronics Corporation Harrisburg, Pa 17105-3608	
TOLERANCES UNLESS OTHERWISE SPECIFIED:		PRODUCT SPEC -	APPRO -	8907 SERIES - OVERHANGING SWITCH 8A 125 VAC DPST 3 LEAD POTENTIOMETER 2-SPRING CONSTRUCTION	
0 PLG ± .01		APPLICATION SPEC -	SIZE A2	CAGE CODE 00779	DRAWING NO 1520166
1 PLG ± .01		WEIGHT -	RESTRICTED TO -	CUSTOMER DRAWING	
2 PLG ± .01		SCALE 1:1 SHEET 3 of 32 REV AE1			
3 PLG ± .01					
4 PLG ± .01					
ANGLES ± 1°					
FINISH					

AMP 1471-9 REV 31MM2000

1520166

B

A

4

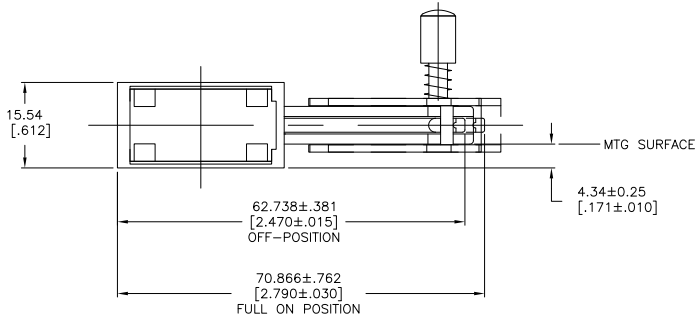
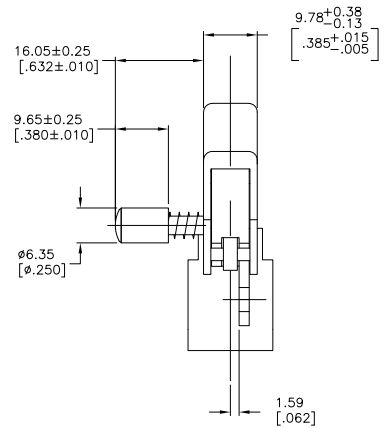
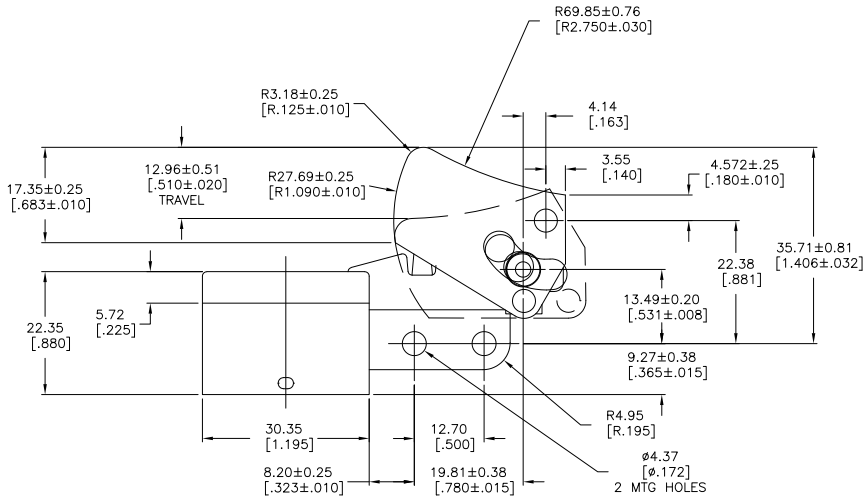
3

2

1

THIS DRAWING IS UNPUBLISHED. RELEASED FOR PUBLICATION.
 © COPYRIGHT BY TYCO ELECTRONICS CORPORATION. ALL RIGHTS RESERVED.

LOC	DIST	REVISIONS					
AD	00	F	LN	DESCRIPTION	DATE	BY	APPD
-	-	-	-	SEE SHEET 1	-	-	-



1. PUSH-IN TERMINAL OPENINGS TO RECEIVE #18 OR #20 GA. STRANDED TINNED LEADS. WIRE STRIPPED LENGTH TO BE 6.35-10.16 [.250-.400].

90-6040

1520166-5	8907K144	RED	RED
TE SWITCH NO.	ARAB SWITCH NO.	LOCK BUTTON COLOR	TRIGGER COLOR

THIS DRAWING IS A CONTROLLED DOCUMENT.		DRW D. WOODRUFF 27SEP74	Tyco Electronics Corporation Harrisburg, Pa 17105-3608	
DIMENSIONS: mm [INCHES]		CHK R. GLENN 010CT74	NAME B. NEWLAND 010CT74	
TOLERANCES UNLESS OTHERWISE SPECIFIED:		APD -	8907 SERIES OVERHANGING SWITCH 6A 125 VAC / 3A 250 VAC DOUBLE POLE SINGLE THROW ON-OFF	
0 PLC ± .1	1 PLC ± .15	APPLICATION SPEC -	SIZE A2	RESTRICTED TO -
2 PLC ± .2	3 PLC ± .3	WEIGHT -	00779	1520166
4 PLC ± .5	ANGLES ± .1°	CUSTOMER DRAWING	SCALE 2:1	SHEET 4 of 32
MATERIAL -	FINISH -	REV AE1		

AMP 1471-9 REV 31MM2000

1520166

B

A

4

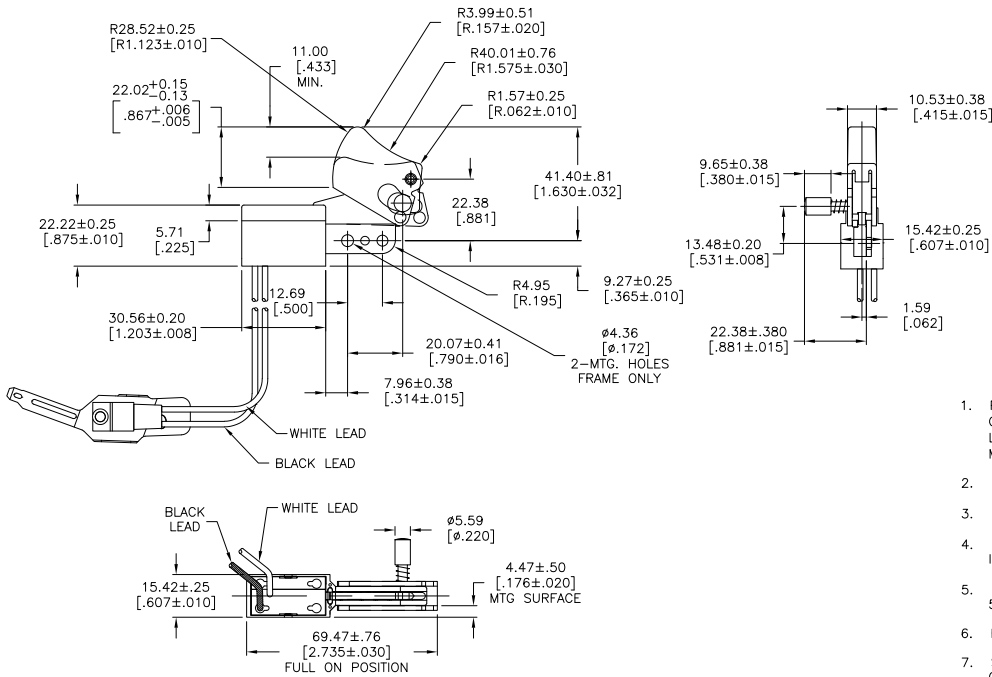
3

2

1

THIS DRAWING IS UNPUBLISHED. RELEASED FOR PUBLICATION
 BY TYCO ELECTRONICS CORPORATION. ALL RIGHTS RESERVED.

LOC	DIST	REVISIONS		DATE	BY	APP'D
AD	00	F	LR			
		SEE SHEET 1				



1. PUSH-IN TERMINAL OPENINGS TO RECEIVE # 18 GA OR #20 GA STRANDED TIN DIPPED WIRE. WIRE STRIP LENGTH 6.35 - 10.16[.250 - .400]. (PULL OUT FORCE MUST BE 5 LBS MIN.)
2. PULL OUT FORCE OF WHITE LEAD MUST EXCEED 14 LBS.
3. PRETRAVEL TO BE 3.30 ±1.5[.130 ±.059].
4. INITIAL OPERATING FORCE (MEASURED AT 1.27[.050] DEFLECTION) IS 2.7 LBS ±0.71 LBS.
5. HOLD ON FORCE (MEASURED AT 10.16[.400] TRIGGER DEFLECTION) IS 5.40 LBS ±1.0 LBS.
6. FORCE TO ENGAGE LOCK PIN MUST BE 3.8 LBS MIN.
7. SEE 91-337-2 ON DWG C-1520166 SHT7 FOR DIMENSIONS OF E-MOD ELECTRONIC PACKAGE WITH LEADS AND BLACK & DECKER HEAT SINK.

91-734

3-1520166-9	8907K85	BLACK	BLACK
1520166-6	8907K148	YELLOW	YELLOW
TE SWITCH NO.	ARAB SWITCH NO.	LOCK BUTTON COLOR	TRIGGER COLOR

DIMENSIONS		TOLERANCES UNLESS OTHERWISE SPECIFIED		APPROVED		REVISIONS	
mm	[INCHES]	0 PL	± .-	DATE	BY	DATE	BY
1 PL	± .-	31 OCT 1975					
2 PL	± .-						
3 PL	± .13[.005]						
4 PL	± .13[.005]						
ANGLES	± 1°						
FINISH							

THIS DRAWING IS A CONTROLLED DOCUMENT.	DRN	W. Leonard	300CT95	Tyco Electronics Corporation	
	CHK.	W. HANSON	300CT95	Harrisburg, Pa 17105-3608	
	APP'D	B. BURGESS	31 OCT 1975	8907 SERIES-DUST RESISTANT OVERHANGING SWITCH	
	PRODUCT SPEC.			8A 125 VAC DPST WITH EXTERNAL ELECTRONICS	
	APPLICATION SPEC.			Z-SPRING / D-PAK CONSTRUCTION	
MATERIAL				SIZE	CAGE CODE (DRAWING NO)
				A2	00779
				RESTRICTED TO	
				SCALE	1:1
				SHEET	5 of 32
				REV	AE1

AMP 1471-9 REV 31MM2000

1520166

A

4

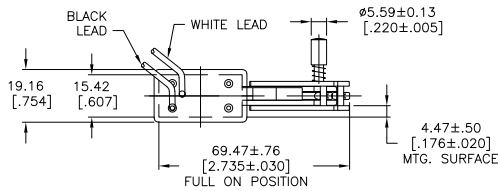
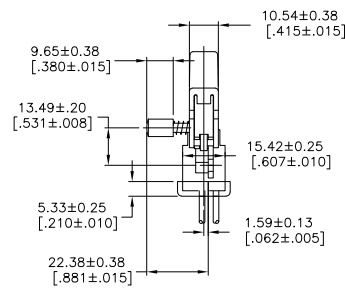
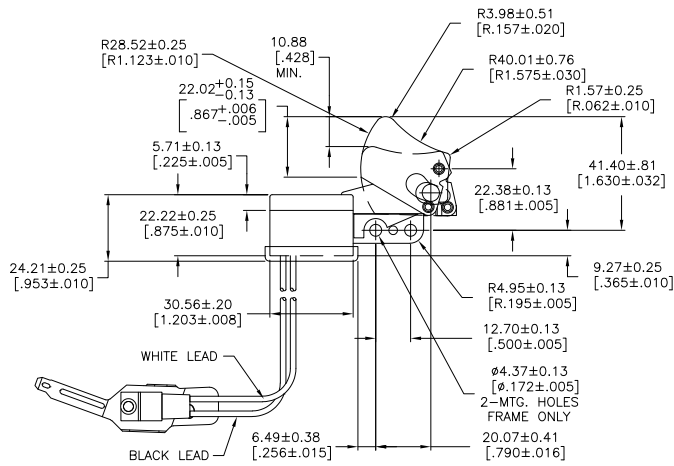
3

2

1

THIS DRAWING IS UNPUBLISHED. RELEASED FOR PUBLICATION
 BY TYCO ELECTRONICS CORPORATION. ALL RIGHTS RESERVED.

LOC	DIST	REVISIONS					
AD	00	F	LNK	DESCRIPTION	DATE	BY	APPD
				SEE SHEET 1			



- PUSH-IN TERMINAL OPENINGS TO RECEIVE # 18 GA OR #20 GA STRANDED TIN DIPPED WIRE. WIRE STRIP LENGTH 6.35 - 10.16 [.250 - .400]. (PULL OUT FORCE MUST BE 5 LBS MIN.)
- PULL OUT FORCE OF WHITE LEAD MUST EXCEED 14 LBS.
- PRETRAVEL TO BE 3.30 ±1.5 [.130 ±.059].
- INITIAL OPERATING FORCE (MEASURED AT 1.27 [.050] DEFLECTION) IS 2.7 LBS ±0.71 LBS.
- HOLD ON FORCE (MEASURED AT 10.16 [.400] TRIGGER DEFLECTION) IS 5.40 LBS ±1.0 LBS.
- FORCE TO ENGAGE LOCK PIN MUST BE 3.8 LBS MIN.
- SEE 91-337 ON DWG C-1520166 SHT7 FOR DIMENSIONS OF E-MOD ELECTRONIC PACKAGE WITH LEADS AND BLACK & DECKER HEAT SINK.

91-305

DIMENSIONS:		TOLERANCES UNLESS OTHERWISE SPECIFIED:		DRAWN		BY		DATE		REVISED	
mm	[INCHES]	0 PLC	±	W. HANSON	20FEB92	W. HANSON	20FEB92	20FEB92	20FEB92	W. HANSON	20FEB92
1 PLC	±	W. LEONARD	27FEB92	Tyco Electronics Corporation		Tyco Electronics Corporation		Harrisburg, Pa 17105-3608		91-305	
2 PLC	±	J. SMITH	01MAR92	8907 SERIES OVERHANGING SWITCH		8907 SERIES OVERHANGING SWITCH		Z-SPRING / D-PAK CONSTRUCTION		RESTRICTED TO	
3 PLC	±	APPLICATION SPEC		BA 125 VAC DPST WITH EXTERNAL ELECTRONICS		BA 125 VAC DPST WITH EXTERNAL ELECTRONICS		Z-SPRING / D-PAK CONSTRUCTION		RESTRICTED TO	
4 PLC	±	WEIGHT		A2 00779 C=1520166		A2 00779 C=1520166		SCALE 1:1		SHEET 6 of 32	
ANGLES	±	CUSTOMER DRAWING		CUSTOMER DRAWING		CUSTOMER DRAWING		SCALE 1:1		SHEET 6 of 32	
FINISH											

TE SWITCH NO.	ARAB SWITCH NO.	LOCK BUTTON COLOR	TRIGGER COLOR
2-1520166-1	8907K409	BLACK	BLACK

AMP 1471-9 REV 31MM2000

1520166

91-305

RESTRICTED TO

REV AE1

4

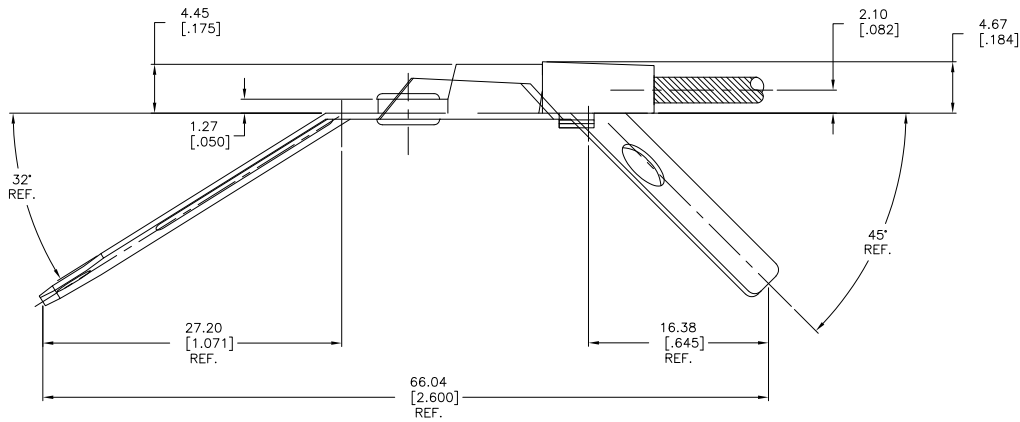
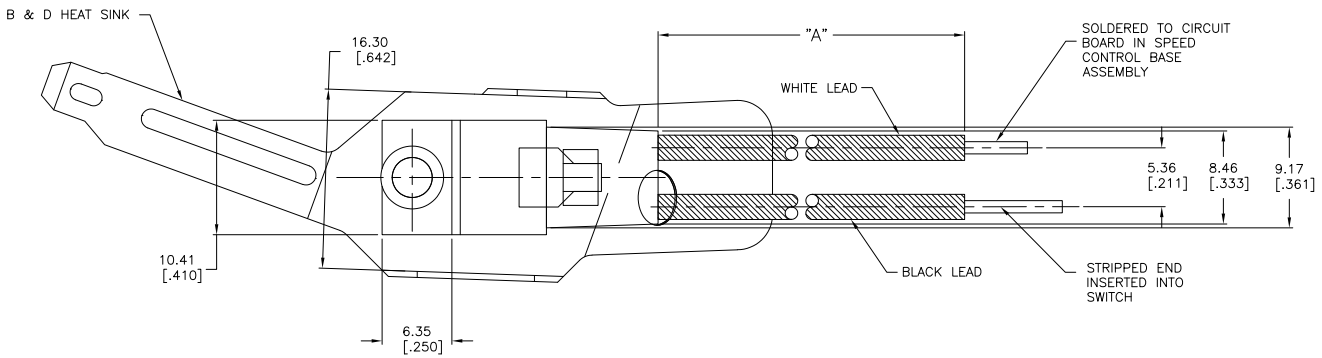
3

2

1

THIS DRAWING IS UNPUBLISHED. RELEASED FOR PUBLICATION
 BY TYCO ELECTRONICS CORPORATION. ALL RIGHTS RESERVED.

LOC	DIST	REVISIONS			
F	LN	DESCRIPTION	DATE	BY	APPD
AD	00	SEE SHEET 1	-	-	-



91-337-2	177.04±12.70[6.970±.500]
91-337	154.15±3.0[6.069±.118]
PART NO.	DIMENSION "A"
	91-337

DIMENSIONS		TOLERANCES UNLESS OTHERWISE SPECIFIED		DIM	
mm	[INCHES]	PLC	PLC	W. LEONARD	DATE
0	PLC	±	—	10.4.992	04.4.992
1	PLC	±	—	W. HANSON	10.4.992
2	PLC	±	—	W. HANSON	12.4.992
3	PLC	±	25[.010]	J. SMITH	12.4.992
4	PLC	±	—	NAME	
ANGLES				TYCO ELECTRONICS	
FINISH				Tyco Electronics Corporation	
MATERIAL				Harrisburg, Pa 17105-3608	
CUSTOMER DRAWING				E-MOD PACKAGE W / BLACK & DECKER HEAT SINK	
SCALE				SIZE CASE CODE DRAWING NO RESTRICTED TO	
4:1				A2 00779 C=1520166	
SHEET				7 of 32	
REV				AE1	

AMP 1471-9 REV 31MM2000

1520166

B

A

4

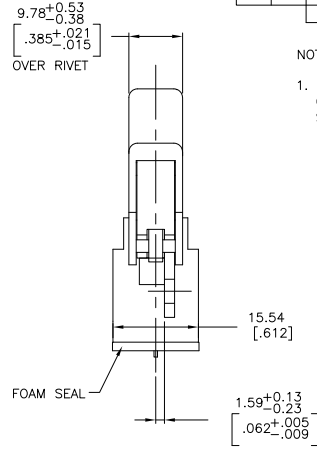
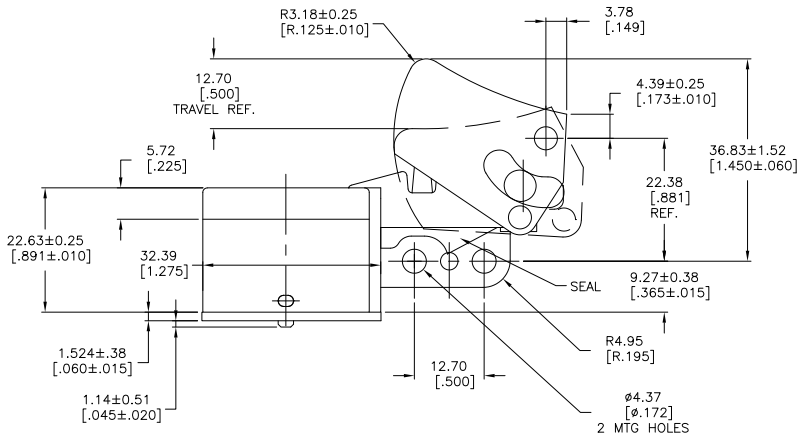
3

2

1

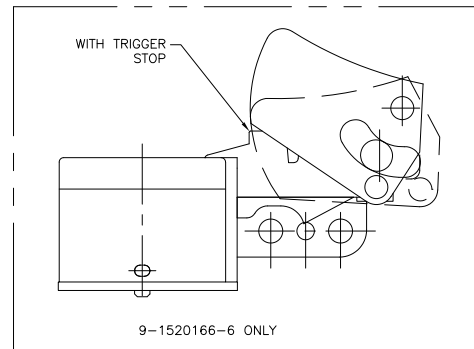
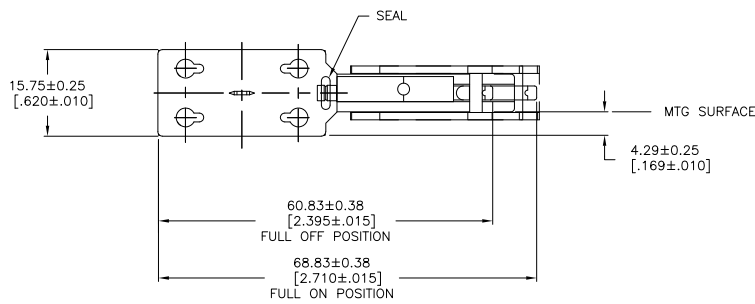
THIS DRAWING IS UNPUBLISHED. RELEASED FOR PUBLICATION.
 © COPYRIGHT BY TYCO ELECTRONICS CORPORATION. ALL RIGHTS RESERVED.

LOC	DIST	REVISIONS		
F	LNK	DESCRIPTION	DATE	BY
AD	00	SEE SHEET 1	-	-



NOTES:

- PUSH-IN TERMINAL OPENINGS TO RECEIVE #16 OR #18 GA. STRANDED TINNED LEADS. WIRE STRIPPED LENGTH TO BE 7.62-10.16[.300-.400]



91-946

TE SWITCH NO.	ARAB SWITCH NO.	TRIGGER COLOR
1520166-7	8907K156	BLACK
7-1520166-4	8907K159	BLACK
9-1520166-6	-	BLACK

OBSOLETE

AMP 1471-9 REV 31MAR2000

DIMENSIONS:		TOLERANCES UNLESS OTHERWISE SPECIFIED:		APPROVALS:		REVISIONS:	
mm	[INCHES]	0 PLZ	±	DATE	BY	DATE	BY
		1 PLZ	±				
		2 PLZ	±				
		3 PLZ	±				
		4 PLZ	±				
		ANGLES	±				
		FINISH	±				

DRW	W. Leonard	25AP999	TYCO Electronics	TYCO Electronics Corporation
CHK	J. DOBBS	26AP999		Harrisburg, Pa 17105-3608
C	J. THOMAS	27AP999		
NAME	8907 SERIES-DUST RESISTANT OVERHANGING SWITCH			
PRODUCT SPEC	12A 125 VAC DPST WITH EXTERNAL ELECTRONICS.			
APPLICATION SPEC	Z-SPRING CONSTRUCTION			
SIZE	A2	00779	C=1520166	RESTRICTED TO
WEIGHT	CUSTOMER DRAWING			
SCALE	2:1			
SHEET	8 of 32			
REV	AE1			

1520166

A

4

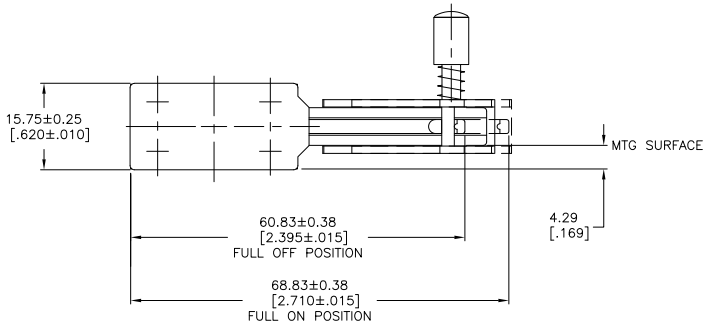
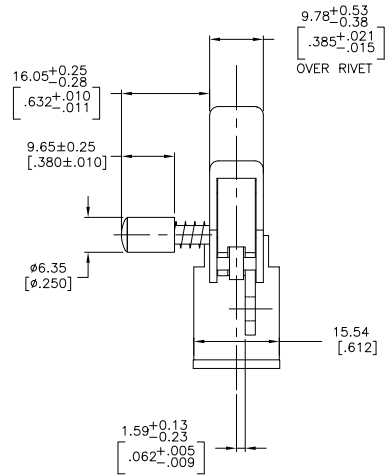
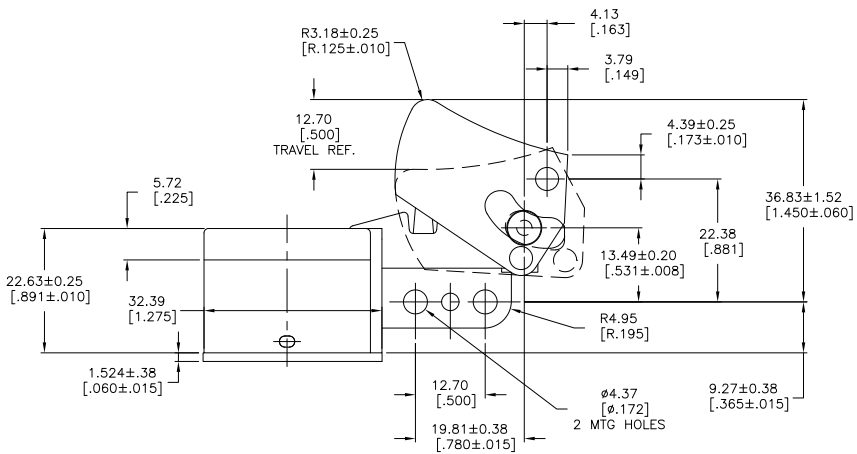
3

2

1

THIS DRAWING IS UNPUBLISHED. RELEASED FOR PUBLICATION.
 © COPYRIGHT BY TYCO ELECTRONICS CORPORATION. ALL RIGHTS RESERVED.

LOC	DIST	REVISIONS				
AD	00	F	LNK	DATE	BY	APPD
				SEE SHEET 1		



- PUSH-IN TERMINAL OPENINGS TO RECEIVE #18 OR #20 GA. STRANDED TINNED LEADS. WIRE STRIPPED LENGTH TO BE 6.35-10.16 [.250 - .400].

91-862

1-1520166-2	8907K190	BLACK	BLACK
TE SWITCH NO.	ARAB SWITCH NO.	LOCK BUTTON COLOR	TRIGGER COLOR

THIS DRAWING IS A CONTROLLED DOCUMENT.		DRN C. DOBBS 21MAR98	Tyco Electronics Corporation Harrisburg, Pa 17105-3608	
DIMENSIONS: mm [INCHES]		CHK W. LEONARD 31MAY98	APPROVED J. HENDERSON 31MAY98	
TOLERANCES UNLESS OTHERWISE SPECIFIED:		NAME 8907 SERIES-DUST RESISTANT OVERHANGING SWITCH		
Ø PLG	± .005	PRODUCT SPEC 6A 125 VAC DPST		
1 PLG	± .005	APPLICATION SPEC Z-SPRING / D-PAK CONSTRUCTION		
2 PLG	± .005	SIZE CASE CODE DRAWING NO RESTRICTED TO		
3 PLG	± .005	A2 00779 C=1520166		
4 PLG	± .005	MATERIAL FINISH		
ANGLES	± .1°	CUSTOMER DRAWING SCALE 2:1 SHEET 9 of 32 REV AE1		

AMP 1471-9 REV 31MAR2000

1520166

A

REV

4

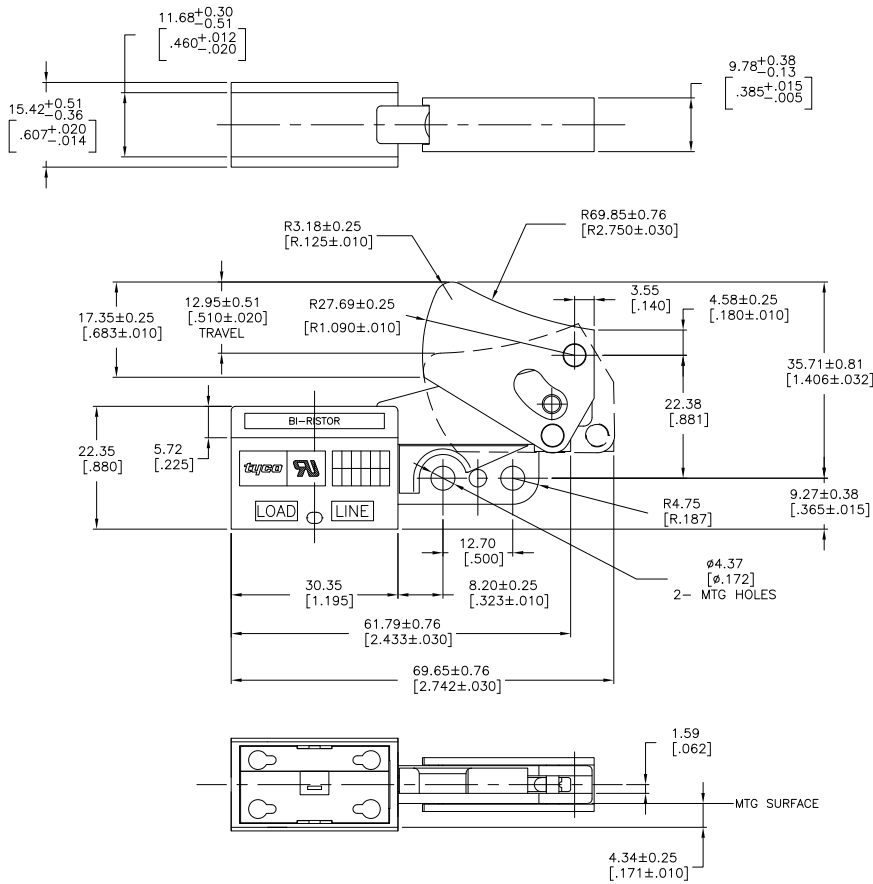
3

2

1

THIS DRAWING IS UNPUBLISHED. RELEASED FOR PUBLICATION. BY TYCO ELECTRONICS CORPORATION. ALL RIGHTS RESERVED.

LOC	DIST	REVISIONS		
AD	00	F	LN	DATE
		-	SEE SHEET 1	-



1. PUSH-IN TERMINAL OPENINGS TO RECEIVE #18 OR #20 GA. STRANDED TINNED LEADS. WIRE STRIPPED LENGTH TO BE 6.35-10.16[.250-.400].

1520166-8	8907K157	BLACK	OBSOLETE
TE SWITCH NO.	ARAB SWITCH NO.	TRIGGER COLOR	

THIS DRAWING IS A CONTROLLED DOCUMENT. 91-477

DRN	W. HANSON	13MAY94	Tyco Electronics Corporation
CHK	Leonard D.	16MAY94	Harrisburg, Pa 17105-3608
W.	E. WESOLEK	16MAY94	
APCD			
PRODUCT SPEC			8907 SERIES - OVERHANGING SWITCH
APPLICATION SPEC			8.5A 125 VAC DPST WITH INTERNAL QUICK CONNECT HEAT SINK, Z-SPRING CONSTRUCTION
WEIGHT			RESTRICTED TO
MATERIAL			A2 00779 C=1520166
FINISH			CUSTOMER DRAWING

SCALE 2:1 SHEET 10 of 32 REV AE1

AMP 1471-9 REV 31MAR2000

1520166

A

4

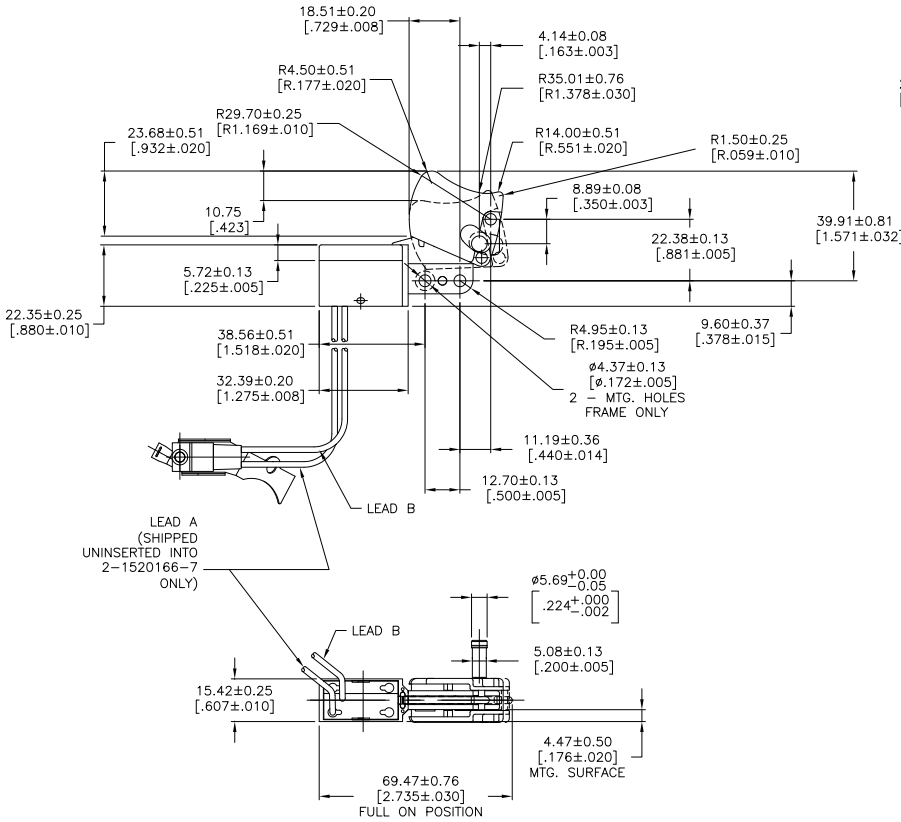
3

2

1

THIS DRAWING IS UNPUBLISHED. RELEASED FOR PUBLICATION BY TYCO ELECTRONICS CORPORATION. ALL RIGHTS RESERVED.

LOC	DIST	REVISIONS			
F	LN	DESCRIPTION	DATE	BY	APPD
AD	00	SEE SHEET 1			



1. PUSH-IN TERMINAL OPENINGS TO RECEIVE # 18 GA OR #20 GA STRANDED TIN DIPPED WIRE. WIRE STRIP LENGTH 6.35 - 10.16[.250 - .400] (PULL OUT FORCE MUST BE 5 LBS MIN.)
2. PULL OUT FORCE OF LEAD A MUST EXCEED 14 LBS.
3. SEE DWG NO. 91-778 ON C-1520166 SH12 FOR DIMENSIONS OF EXTERNAL TRIAC WITH LEADS AND BLACK & DECKER HEAT SINK.

TE NO.	ARAB NO.	RATING	DESCRIPTION	LEAD A	LEAD B	LOCK BUTTON	TRIGGER COLOR
2-1520166-7	8907K530	3A 250 VAC	DPST WITH EXTERNAL ELECTRONICS	WHITE	BLACK	YES - BLACK	BLACK
1-1520166-0	8907K178	10A 125 VAC	DPST WITH EXTERNAL ELECTRONICS	BLACK	WHITE	NO	BLACK
1520166-9	8907K177	10A 125 VAC	SPST WITH BUSSING & EXTERNAL ELECTRONICS	WHITE	BLACK	NO	BLACK

THIS DRAWING IS A CONTROLLED DOCUMENT.		DRW	DL	BURGESS	1202095	91-777	91-16221
DIMENSIONS: mm [INCHES]		CHK				Tyco Electronics Corporation Harrisburg, Pa 17105-3608	
TOLERANCES UNLESS OTHERWISE SPECIFIED:		APPRO				8907 SERIES-DUST RESISTANT OVERHANGING SWITCH	
0 PLC	± .-	PRODUCT SPEC				RESTRICTED TO	
1 PLC	± .-	APPLICATION SPEC				SIZE	CASE CODE
2 PLC	± .-	WEIGHT				A2	00779
3 PLC	± .-					C=	1520166
4 PLC	± .-					CUSTOMER DRAWING	
ANGLES	± 1°					SCALE	1:1
FINISH						SHEET	11 of 32
						REV	AE1

AMP 1471-9 REV 31MM2000

1520166

A

REV

4

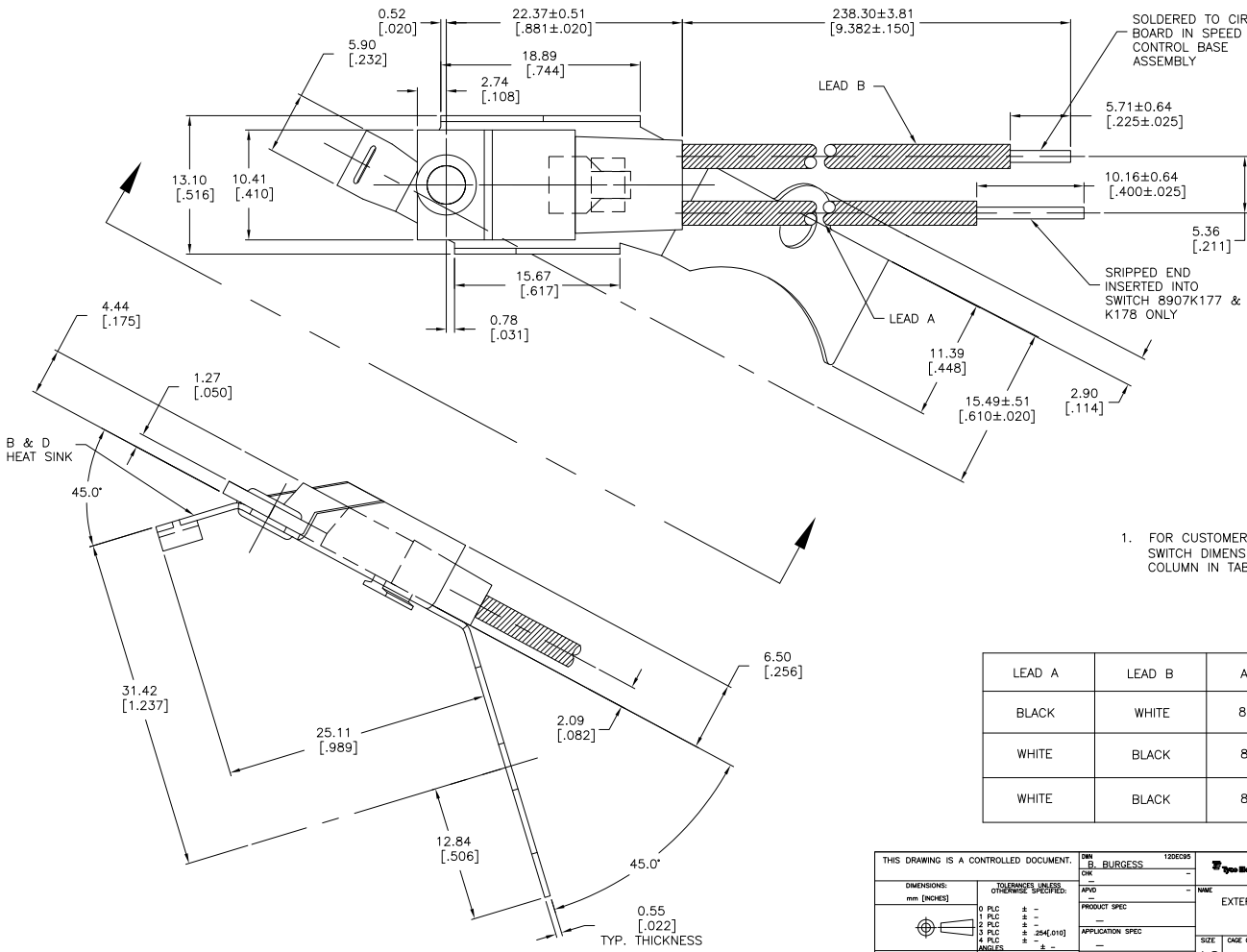
3

2

1

THIS DRAWING IS UNPUBLISHED. RELEASED FOR PUBLICATION
 BY TYCO ELECTRONICS CORPORATION. ALL RIGHTS RESERVED.

LOC	DIST	REVISIONS				
AD	00	F	LW	DATE	OWN	APPD
				SEE SHEET 1		



1. FOR CUSTOMER DWG NUMBER WITH COMPLETE SWITCH DIMENSIONS SEE 'FINAL CUST DWG' COLUMN IN TABLE.

LEAD A	LEAD B	ARAB NO.	FINAL CUST DWG
BLACK	WHITE	8907K178	C-1520166 SHT11
WHITE	BLACK	8907K177	C-1520166 SHT11
WHITE	BLACK	8907K530	C-1520166 SHT11

91-778

THIS DRAWING IS A CONTROLLED DOCUMENT. DIM BURNESS 1202095
 DIM BURNESS 1202095
 DIM BURNESS 1202095

DIMENSIONS: mm [INCHES]	TOLERANCES UNLESS OTHERWISE SPECIFIED:	DATE	NAME
0 PLG ± .010	0 PLG ± .010	DATE	NAME
1 PLG ± .010	1 PLG ± .010	DATE	NAME
2 PLG ± .010	2 PLG ± .010	DATE	NAME
3 PLG ± .010	3 PLG ± .010	DATE	NAME
4 PLG ± .010	4 PLG ± .010	DATE	NAME
ANGLES ± .5°	ANGLES ± .5°	DATE	NAME

MATERIAL FINISH

TYCO ELECTRONICS Corporation
 Harrisburg, Pa 17105-3608

EXTERNAL TRIAC ASSY W/ BLACK & DECKER HEAT SINK

SIZE CASE CODE DRAWING NO. RESTRICTED TO
 A2 00779 C=1520166

CUSTOMER DRAWING SCALE 4:1 SHEET 12 of 32 REV AE1

AMP 1471-9 REV 31MM2000

4

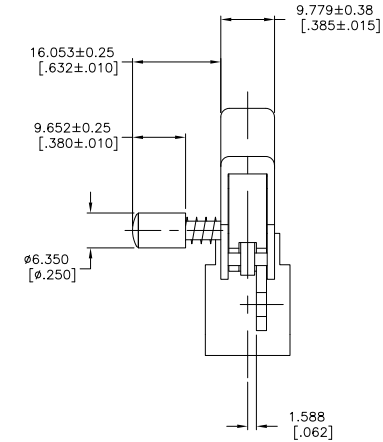
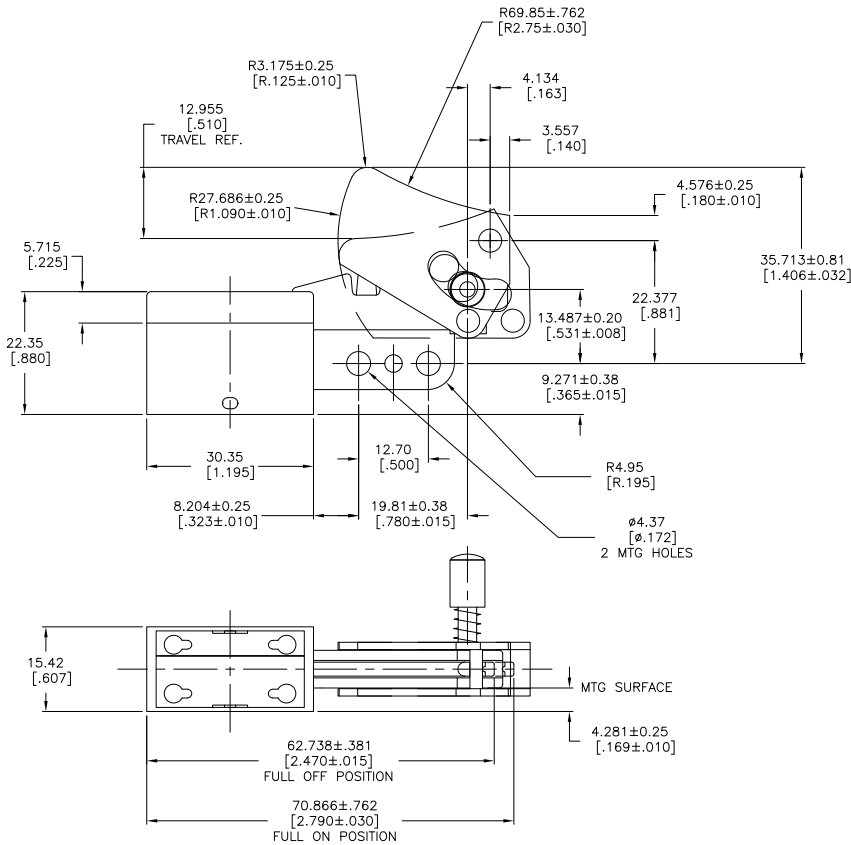
3

2

1

THIS DRAWING IS UNPUBLISHED. RELEASED FOR PUBLICATION. BY TYCO ELECTRONICS CORPORATION. ALL RIGHTS RESERVED.

LOC	DIST	REVISIONS					
AD	#00	F	LN	DESCRIPTION	DATE	BY	APPD
-	-	-	-	SEE SHEET 1	-	-	-



1. PUSH-IN TERMINAL OPENINGS TO RECEIVE #18 OR #20 GA. STRANDED TINNED LEADS. WIRE STRIPPED LENGTH TO BE 6.35-10.16[.250 - .400].

91-654
91-800

TE NO.	ARAB NO.	RATING	DESCRIPTION	LOCK BUTTON COLOR	TRIGGER COLOR
1-1520166-3	8907K193	10A 125VAC / 3A 250VAC	DPST ON - OFF, Z-SPRING CONSTRUCTION	BLACK	BLACK
1-1520166-5	8907K291	6A 125VAC / 3A 250VAC	DPST ON - OFF, Z-SPRING CONSTRUCTION	RED	RED
1-1520166-7	8907K343	6A 125 VAC	DPST WITH RFI LEAD, Z-SPRING / DISCRETE COMPONENT CONSTRUCTION	RED	RED
2-1520166-5	8907K493	6A 125VAC / 3A 250VAC	DPST ON - OFF, Z-SPRING CONSTRUCTION	RED	RED
9-1520166-4	-	10A 125VAC / 3A 250VAC	DPST ON - OFF, Z-SPRING CONSTRUCTION, DUST SEAL, NO LOCK	-	BLACK

THIS DRAWING IS A CONTROLLED DOCUMENT.		DRN	W. LeodorD	20MAY95	Tyco Electronics Corporation Harrisburg, Pa 17105-3608
DIMENSIONS: mm [INCHES]		CHK	J. HUGGINS	02AP97	
TOLERANCES UNLESS OTHERWISE SPECIFIED:		APPD	B. BURGESS	02AP97	NAME
0 PLC ± .		PRODUCT SPEC	8907 SERIES- OVERHANGING SWITCH		
1 PLC ± .		APPLICATION SPEC	SIZE CASE CODE DRAWING NO		
2 PLC ± .		WEIGHT	A2 00779 C=1520166		
3 PLC ± .		CUSTOMER DRAWING	RESTRICTED TO		
4 PLC ± .		SCALE	2:1 SHEET 13 of 32 REV AE1		
ANGLES ± °					
FINISH					

AMP 1471-9 REV 31MM2000

1520166

A

4

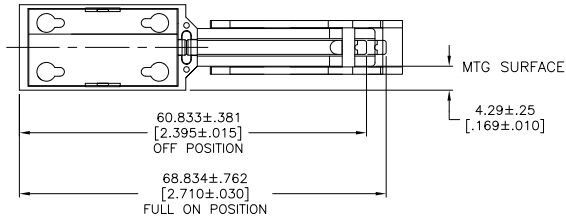
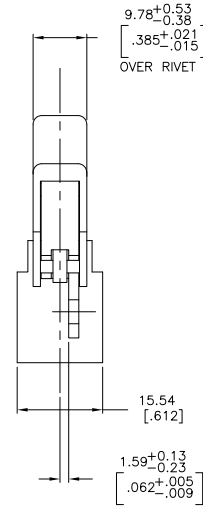
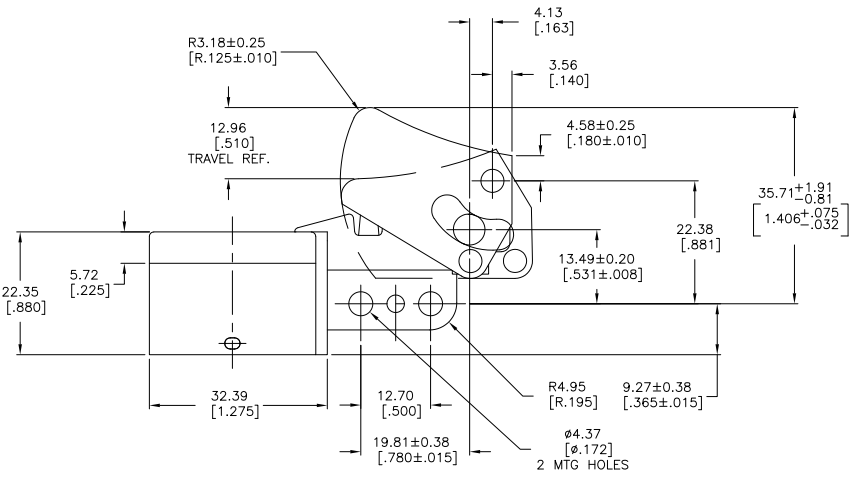
3

2

1

THIS DRAWING IS UNPUBLISHED. RELEASED FOR PUBLICATION
 © COPYRIGHT BY TYCO ELECTRONICS CORPORATION. ALL RIGHTS RESERVED.

LOC	DIST	REVISIONS				
AD	00	F	LN	DATE	BY	APPD
				SEE SHEET 1		



1. PUSH-IN TERMINAL OPENINGS TO RECEIVE #18 OR #20 GA. STRANDED TINNED LEADS. WIRE STRIPPED LENGTH TO BE 6.35-10.16 [.250 - .400].

91-887

DIMENSIONS:		TOLERANCES UNLESS OTHERWISE SPECIFIED:		APPROVED:		TYCO ELECTRONICS	
mm	[INCHES]	0 PL	±	DATE	NAME	SIZE	DATE
		1 PL	±	01JUL98	W. LEONARD	A2	00779
		2 PL	±	01JUL98	W. HANSON	C=	1520166
		3 PL	± 1X(.005)		J. SMITH		
		4 PL	± .1*				
		ANGLES	± .1*				
		FINISH					

THIS DRAWING IS A CONTROLLED DOCUMENT.

MATERIAL: - FINISH: - WEIGHT: - APPLICATION SPEC: - PRODUCT SPEC: -

TYCO ELECTRONICS Corporation
 Harrisburg, Pa 17105-3608

8907 SERIES-DUST RESISTANT OVERHANGING SWITCH
 6A 125 VAC DPST ON-OFF
 2-SPRING CONSTRUCTION

CUSTOMER DRAWING SCALE: 2:1 SHEET 14 of 32 REV AE1

1-1520166-8	8907K345	RED
TE SWITCH NO.	ARAB SWITCH NO.	TRIGGER COLOR

AMP 1471-9 REV 31MM2000

1520166

B

A

4

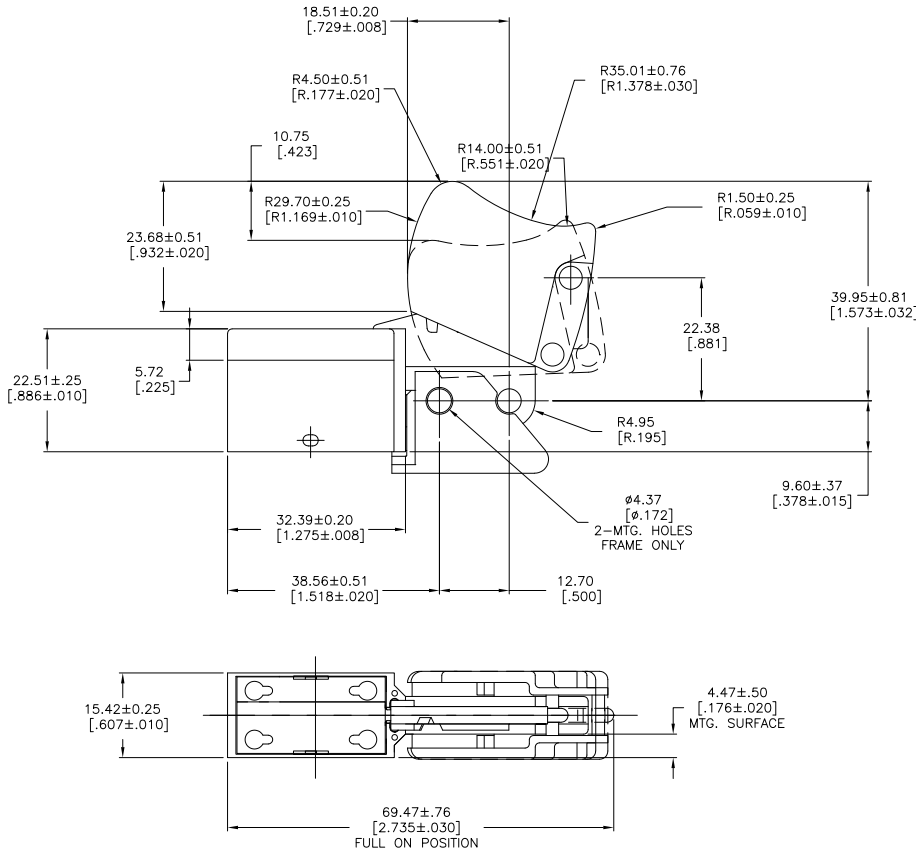
3

2

1

THIS DRAWING IS UNPUBLISHED. RELEASED FOR PUBLICATION. BY TICO ELECTRONICS CORPORATION. ALL RIGHTS RESERVED.

LOC	DIST	REVISIONS		
AD	00	F	LN	DATE
			SEE SHEET 1	



TE SWITCH NO.	ARAB SWITCH NO.	TRIGGER COLOR
9-1520166-7	N/A	QUANTUM YELLOW
8-1520166-4	N/A	QUANTUM RED
4-1520166-2	8907K414	ROSE RED
2-1520166-0	8907K406	BLACK

THIS DRAWING IS A CONTROLLED DOCUMENT. DIM T. CHRISTENSEN 31MAY00

DIMENSIONS: mm [INCHES]	TOLERANCES UNLESS OTHERWISE SPECIFIED:	0 PLG ±	1 PLG ±	2 PLG ±	3 PLG ±	4 PLG ±	ANGLES ± °
		±	±	±	±	±	±

MATERIAL: - FINISH: -

91-16225

W. Hanson
 8907 SERIES-DUST RESISTANT OVERHANGING SWITCH
 10A 125 VAC SPST WITH BUSSING AND 2ND HEATSINK, Z-SPRING / D-PAK CONSTRUCTION

SIZE: 100E CODE (DRAWING NO) RESTRICTED TO: -
 A2 00779 ©=1520166

CUSTOMER DRAWING SCALE: 2:1 SHEET: 15 of 32 REV: AE1

1520166

A

4

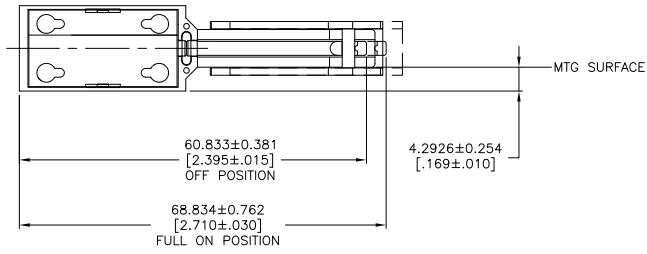
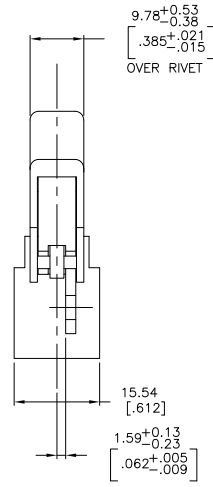
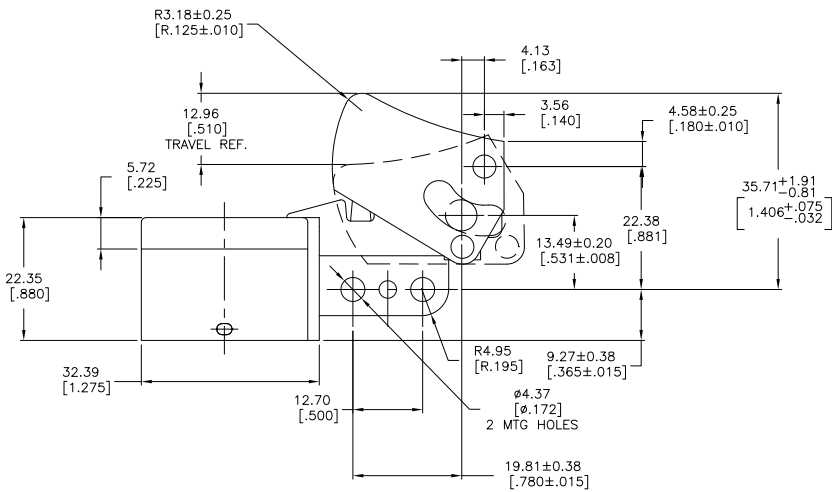
3

2

1

THIS DRAWING IS UNPUBLISHED. RELEASED FOR PUBLICATION
 BY TYCO ELECTRONICS CORPORATION. ALL RIGHTS RESERVED.

LOC	DIST	REVISIONS		DATE	BY	APPD
AD	00	F	LR			
				SEE SHEET 1		



1. PUSH-IN TERMINAL OPENINGS TO RECEIVE #18 OR #20 GA. STRANDED TINNED LEADS. WIRE STRIPPED LENGTH TO BE 6.35-10.16 [.250 - .400].

91-16259

2-1520166-2	8907K419	BLACK
TE SWITCH NO.	ARAB SWITCH NO.	TRIGGER COLOR

THIS DRAWING IS A CONTROLLED DOCUMENT.		DRN	W. Leonard	01JUN00	Tyco Electronics Corporation Harrisburg, Pa 17105-3608
DIMENSIONS: mm [INCHES]		CHK	T. CHRISTENSEN	02JUN00	
TOLERANCES UNLESS OTHERWISE SPECIFIED:		APPD	M. WARDROP	04JUN00	NAME
0 PLG	± .1	PRODUCT SPEC		8907 SERIES-DUST RESISTANT OVERHANGING SWITCH	
1 PLG	± .15	APPLICATION SPEC		6A 125 VAC DPST	
2 PLG	± .2	MATERIAL		Z-SPRING / D-PAK CONSTRUCTION	
3 PLG	± .3	FINISH		SIZE CASE CODE DRAWING NO RESTRICTED TO	
4 PLG	± .5	WEIGHT		A2 00779 ©=1520166	
ANGLES	± .1°	CUSTOMER DRAWING		SCALE 2:1 SHEET 16 of 32 REV AE1	

AMP 1471-9 REV 31MM2000

4

3

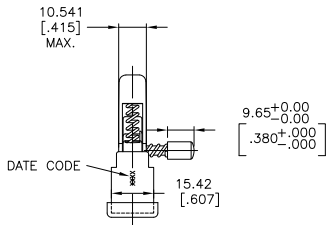
2

1

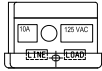
THIS DRAWING IS UNPUBLISHED. RELEASED FOR PUBLICATION
 © COPYRIGHT BY TYCO ELECTRONICS CORPORATION. ALL RIGHTS RESERVED.

LOC	DIST	REVISIONS					
AD	00	F	LWR	DESCRIPTION	DATE	OWN	APPD
				SEE SHEET 1			

1. PUSH-IN TERMINAL OPENINGS TO RECEIVE #18 GA OR #20 GA STRANDED TINNED LEADS. WIRE STRIP LENGTH 6.35-10.16[.250 - .400].

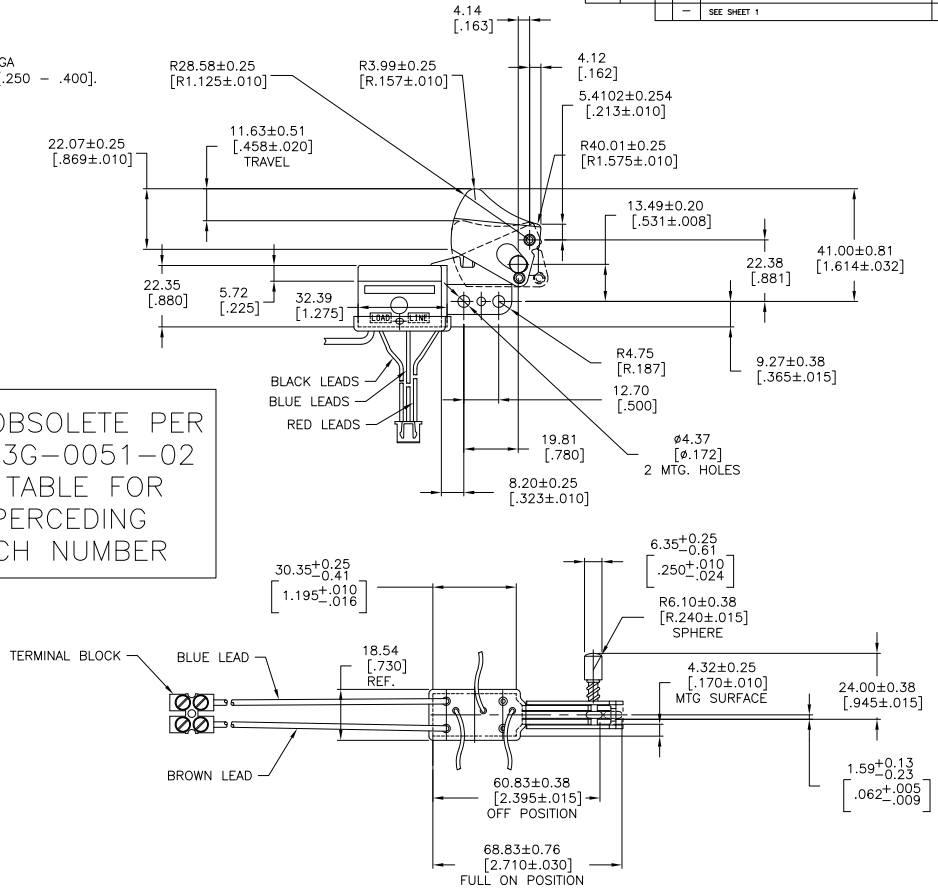


TYCO SWITCH NO. 2-1520166-6
 (ARAB PLANT NO. 8907K529)
 MADE OBSOLETE PER
 ECOG3G-0051-02
 SUPERCEDED BY 4-1520166-6



TYCO SWITCH NO. 3-1520166-0
 (ARAB PLANT NO. 8907K545)
 MADE OBSOLETE PER
 ECOG3G-0051-02
 SUPERCEDED BY 4-1520166-6

MADE OBSOLETE PER
 ECO-G3G-0051-02
 SEE TABLE FOR
 SUPERCEDED
 SWITCH NUMBER



TE NO.	ARAB NO.	DESCRIPTION
2-1520166-6	8907K529	MADE OBSOLETE PER ECOG3G-0051-02 - SUPERCEDED BY 4-1520166-6
3-1520166-0	8907K545	MADE OBSOLETE PER ECOG3G-0051-02 - SUPERCEDED BY 4-1520166-7

THIS DRAWING IS A CONTROLLED DOCUMENT.		DRN	W. LeagorD	180CT00	Tyco Electronics Corporation Harrisburg, Pa 17105-3608	
DIMENSIONS: mm [INCHES]		CHK	J. HUGGINS	180CT00	91-16271 91-16273	
TOLERANCES UNLESS OTHERWISE SPECIFIED:		APPC	W. HANSON	190CT00	NAME: 8907 SERIES-DUST RESISTANT OVERHANGING SWITCH	
Ø	PLC ± .015	PRODUCT SPEC:			DPST WITH 3 LEAD POTENTIOMETER CONNECTOR	
1	PLC ± .015	APPLICATION SPEC:			Z-SPRING CONSTRUCTION	
2	PLC ± .015	WEIGHT:			SIZE	ONE CODE
3	PLC ± .015				A2	00779
4	PLC ± .015				C=	1520166
ANGLES	± .1°				RESTRICTED TO	
MATERIAL	FINISH				SCALE	1:1
					SHEET	17 of 32
					REV	AE1

AMP 1471-9 REV 31MM2000

1520166

B

A

4

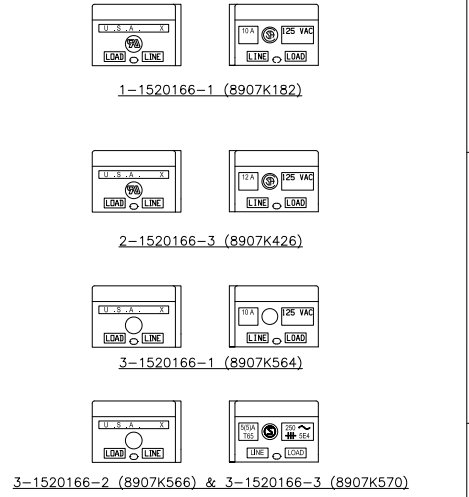
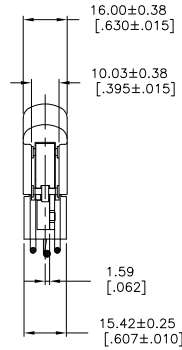
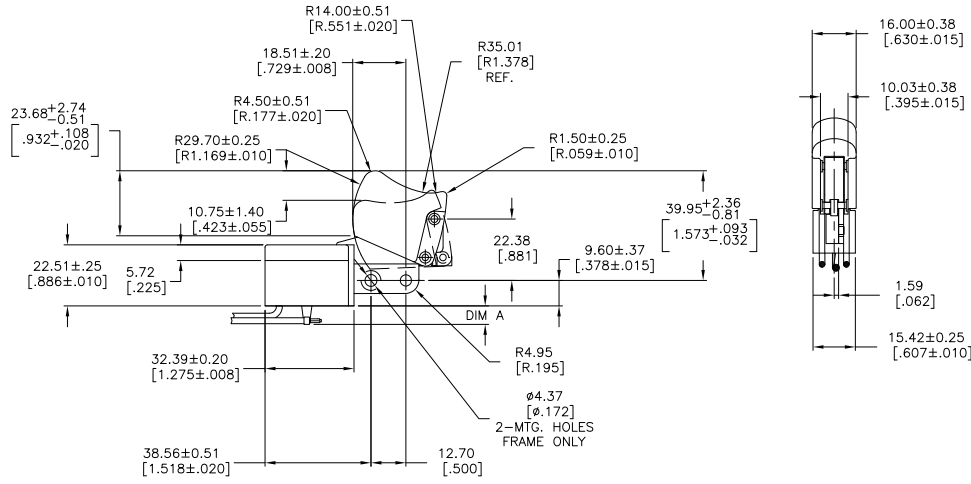
3

2

1

THIS DRAWING IS UNPUBLISHED. RELEASED FOR PUBLICATION.
 © COPYRIGHT BY TYCO ELECTRONICS CORPORATION. ALL RIGHTS RESERVED.

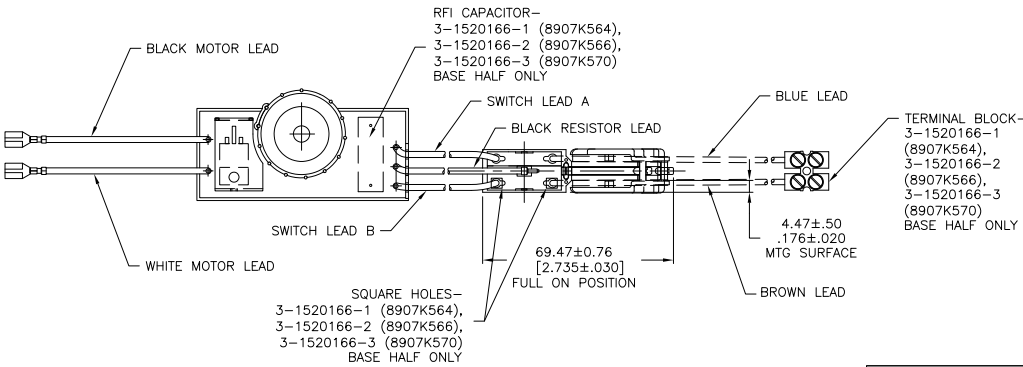
LOC	DIST	REVISIONS					
AD	00	F	LNK	DESCRIPTION	DATE	BY	APPD
-	-	-	-	SEE SHEET 1	-	-	-



3-1520166-2 (8907K566) & 3-1520166-3 (8907K570)

SWITCH MARKINGS

1. PUSH-IN TERMINAL OPENINGS TO RECEIVE # 18 GA OR #20 GA STRANDED TIN DIPPED WIRE. WIRE STRIP LENGTH 6.35 - 10.16[.250 - .400]. (PULL OUT FORCE MUST BE 5 LBS MIN.)
2. SEE 91-782 ON CUSTOMER DWG C-1520166 SHT19 FOR DIMENSIONS OF EXTERNAL SPEED CONTROL MODULE.
3. 50-2500 SHALL APPLY UNLESS OTHERWISE SPECIFIED.



91-783

TE SWITCH NO.	ARAB SWITCH NO.	DIM 'A'	DESCRIPTION	SW LEAD A	SW LEAD B	TRIGGER COLOR	SPEEDWHEEL COLOR
8-1520166-7	7.24±.50(.285±.020)		MODULE W/ RFI CAP. TERMINAL BLOCK - 5A 250VAC 50 Hz	BLUE	BROWN	GREY	GREY
3-1520166-3	8907K570	7.24±.50(.285±.020)	MODULE W/ RFI CAP. TERMINAL BLOCK - 5A 250VAC 50 Hz	BLUE	BROWN	BLUE	BLUE
3-1520166-2	8907K566	7.24±.50(.285±.020)	MODULE W/ RFI CAP. TERMINAL BLOCK - 5A 250VAC 50 Hz	BLUE	BROWN	BLACK	BLACK
3-1520166-1	8907K564	7.24±.50(.285±.020)	MODULE W/ RFI CAP. TERMINAL BLOCK - 10A 125VAC 50 Hz	BLUE	BROWN	BLACK	BLACK
2-1520166-3	8907K426	7.24±.50(.285±.020)	MODULE W/O RFI CAP. W/O TERMINAL BLOCK - 12A 125VAC 60Hz	BLACK	WHITE	BLACK	BLACK
1-1520166-1	8907K182	4.93±.50(.194±.020)	MODULE W/O RFI CAP. W/O TERMINAL BLOCK - 10A 125VAC 60Hz	BLACK	WHITE	BLACK	BLACK

THIS DRAWING IS A CONTROLLED DOCUMENT.

DIMENSIONS: mm [INCHES] 0 PLG ± .01 1 PLG ± .01 2 PLG ± .01 3 PLG ± .01 4 PLG ± .01 ANGLES ± .1° FINISH	TOLERANCES UNLESS OTHERWISE SPECIFIED: 0 PLG ± .01 1 PLG ± .01 2 PLG ± .01 3 PLG ± .01 4 PLG ± .01 ANGLES ± .1° FINISH	DWG: W. HANSON 28AUG97 CHK: W. Leonard 10SEP97 APPD: M.R. DUMMER PRODUCT SPEC: 10SEP97 APPLICATION SPEC: - WEIGHT: - CUSTOMER DRAWING	Tyco Electronics Corporation Harrisburg, Pa 17105-3608 NAME: 8907 SERIES-DUST RESISTANT OVERHANGING SWITCH WITH EXTERNAL MODULE Z-SPRING CONSTRUCTION SIZE: A2 CASE CODE: 00779 DRAWING NO: C=1520166 RESTRICTED TO: - SCALE: 1:1 SHEET: 18 of 32 REV: AE1
--	---	---	--

AMP 1471-9 REV 31MM000

1520166

A

4

3

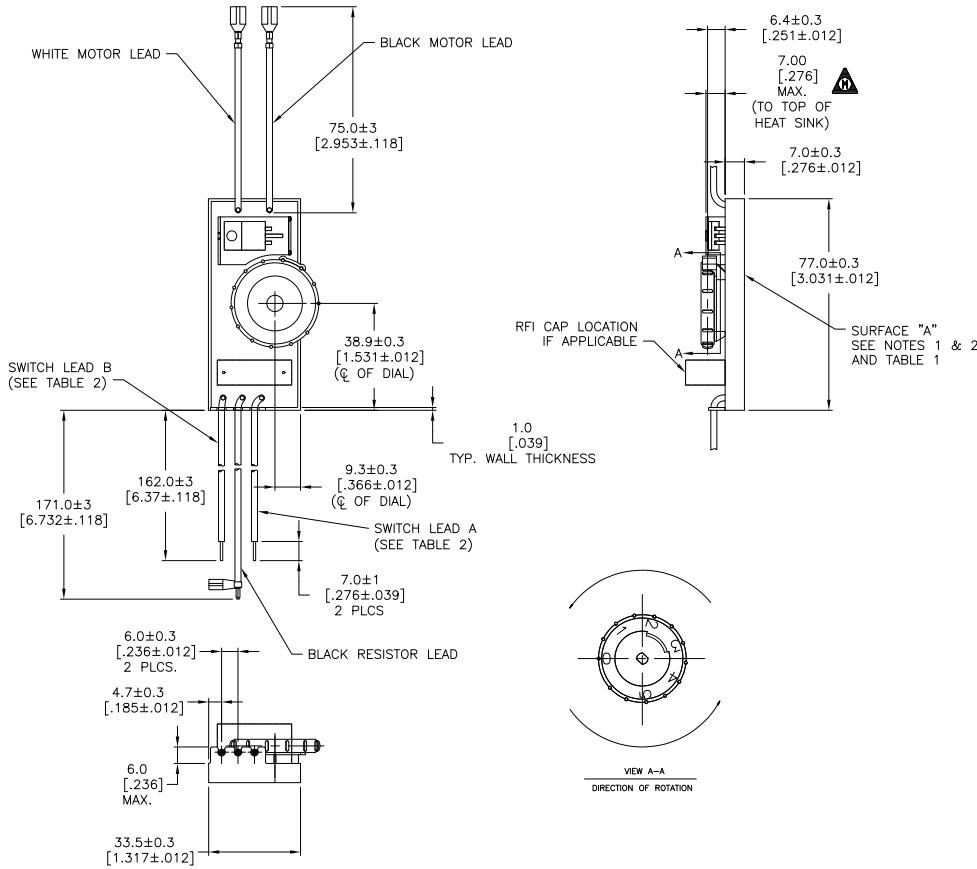
2

1

THIS DRAWING IS UNPUBLISHED. RELEASED FOR PUBLICATION.
 © COPYRIGHT BY TYCO ELECTRONICS CORPORATION. ALL RIGHTS RESERVED.

LOC	DIST	REVISIONS		
AD	00	F	LN	DATE
			SEE SHEET 1	

- BLACK & DECKER PART NUMBER, DATE CODE, AND OTHER MARKINGS ON SURFACE "A" ONLY. LETTERING ON THIS SURFACE TO BE 5MM IN FROM EITHER SIDE AND 2.5[0.984] IN HEIGHT.
- ANY RAISED LETTERING ON SURFACE "A" NOT TO EXCEED .5[.196] FROM THE SURFACE.



B&D P/N	P/N NO.	ARAB NO.
382652-03	1523648-5	90-19842-5
382652-02	1523648-4	90-19842-4
	1523648-3	90-19842-3
382652-01	1523648-2	90-19842-2
382652-00	1523648-1	90-19842

TABLE 1

BLUE	BROWN	-2, -3, -4, -5
BLACK	WHITE	1523648-1
SW LEAD A	SW LEAD B	ASSY P/N

TABLE 2

DESIGN MAJOR REQUIREMENT PER 50-17487

91-782

THIS DRAWING IS A CONTROLLED DOCUMENT.		DRN W. HANSON 28JUG97	Tyco Electronics Corporation Harrisburg, Pa 17105-3608	
DIMENSIONS: mm [INCHES]		CHK. W. Leonard 08SEP97	NAME M.R. DUMMER 08SEP97	
TOLERANCES UNLESS OTHERWISE SPECIFIED:		APPLICATION SPEC: -		
0 PLCS	± .005	SIZE CASE CODE DRAWING NO		
1 PLCS	± .005	A2 00779 C=1520166		
2 PLCS	± .005	RESTRICTED TO		
3 PLCS	± .005	WEIGHT -		
4 PLCS	± .005	CUSTOMER DRAWING		
ANGLES	± .005	SCALE 1:1 SHEET 19 of 32 REV AE1		
FINISH	-			

1520166

A

4

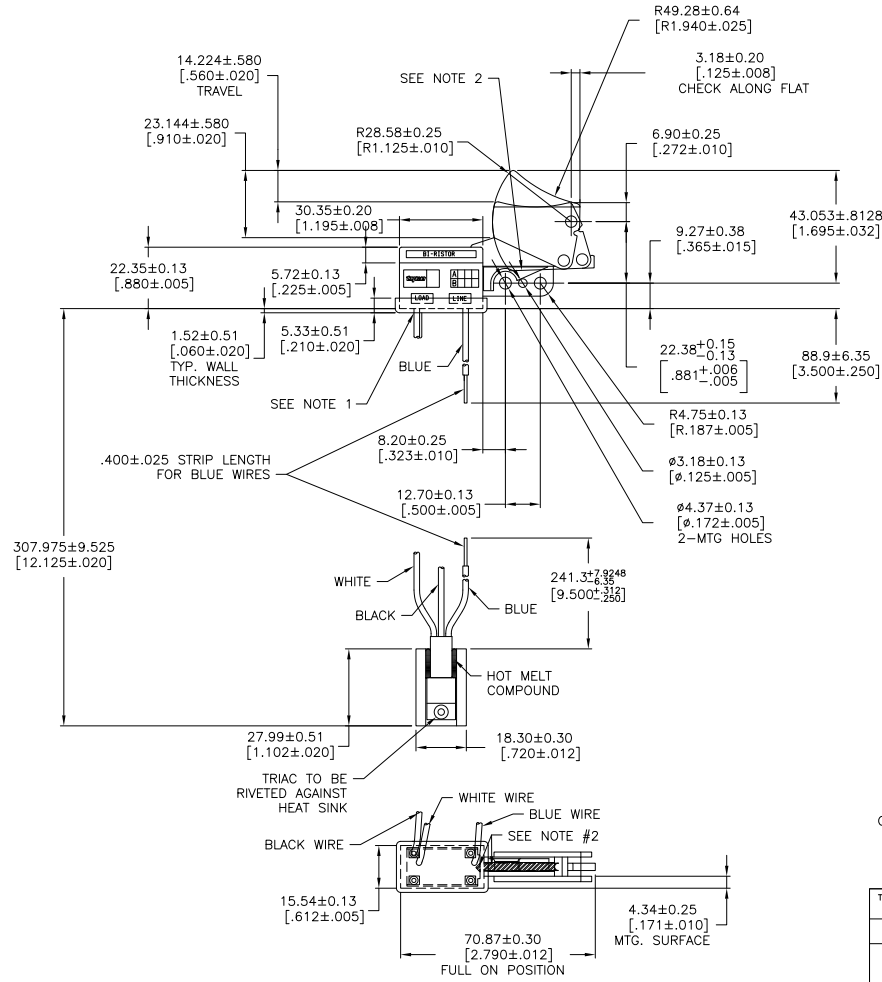
3

2

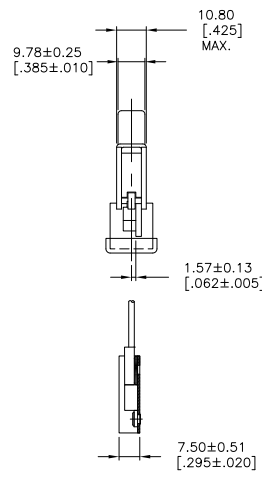
1

THIS DRAWING IS UNPUBLISHED. RELEASED FOR PUBLICATION. ALL RIGHTS RESERVED.
 BY TYCO ELECTRONICS CORPORATION. ALL RIGHTS RESERVED.

LOC	DIST	REVISIONS		
AD	00	F	LNK	DATE
			SEE SHEET 1	



1. PUSH IN TERMINAL OPENINGS TO RECEIVE #18 STRANDED TIN DIPPED WIRE. WIRE STRIP LENGTH 7.62-10.795[.300 -.425].
2. APPLY LUBRICANT 1523950-1 (632-119) TO INSIDE OF FRAME AND ALONG OUTSIDE ON GUIDE LINK IN AREA SHOWN AND NOTED.



TE SWITCH NO.	ARAB SWITCH NO.	TRIGGER COLOR	RATING
8-1520166-8	8907K571	YELLOW	16A/125VAC
3-1520166-8	8907K611	ORANGE	5A/250VAC
3-1520166-6	8907K608	YELLOW	5A/250VAC
3-1520166-4	8907K606	RED	5A/250VAC

THIS DRAWING IS A CONTROLLED DOCUMENT.		TYCO ELECTRONICS CORPORATION	
DESIGNED BY: A. HUPRICH	DRAWN BY: J. McNUALLY	8907 SERIES - OVERHANGING SWITCH	
CHECKED BY: W. Leonard	APPROVED BY: T. McNUALLY	DPST WITH EXTERNAL S.C., MUSTACHE SPRING CONSTRUCTION	
DIMENSIONS: mm [INCHES]	TOLERANCES UNLESS OTHERWISE SPECIFIED:	SIZE: A2	ONE CODE (DRAWING NO): 00779
0 P.L.C. ± .01	1 P.L.C. ± .015	C=1520166	RESTRICTED TO: -
2 P.L.C. ± .02	3 P.L.C. ± .03	SCALE: 1:1	SHEET: 20 of 32
4 P.L.C. ± .05	ANGLES ± 1°	CUSTOMER DRAWING	REV: AE1

AMP 1471-9 REV 31MAR2000

1520166

A

4

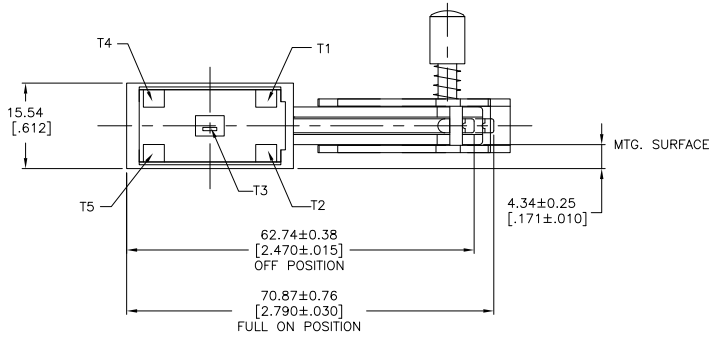
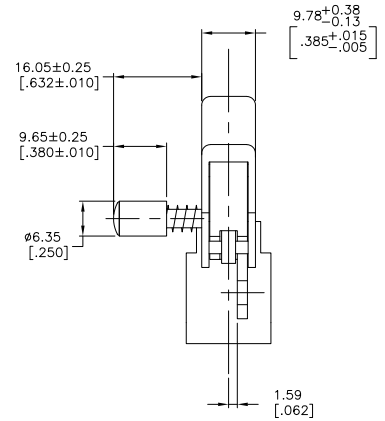
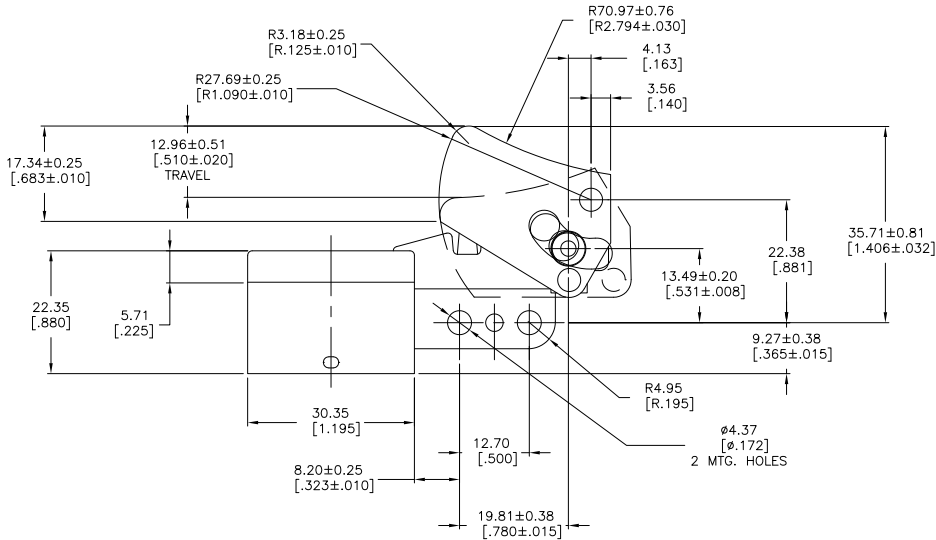
3

2

1

THIS DRAWING IS UNPUBLISHED. RELEASED FOR PUBLICATION. BY TYCO ELECTRONICS CORPORATION. ALL RIGHTS RESERVED.

LOC	DIST	REVISIONS				
AD	00	F	LNK	DATE	BY	APPD
				SEE SHEET 1		



1. PUSH-IN TERMINAL OPENINGS TO RECEIVE #18 OR #20 GA. STRANDED TINNED LEADS. WIRE STRIPPED LENGTH TO BE 6.35-10.16[.250 - .400].

TE NO.	ARAB NO.	RATING	DESCRIPTION	LOCK BUTTON COLOR	TRIGGER COLOR
3-1520166-5	8907K607	4.5A 250 VAC	DPST, DISCRETE COMPONENT CONSTRUCTION	N/A	GRAY
3-1520166-7	8907K609	3A 250 VAC	SPST WITH BUSSING, DISCRETE COMPONENT CONSTRUCTION	RED	RED
7-1520166-6	8907K588	4.5A 250 VAC	DPST, DISCRETE COMPONENT CONSTRUCTION	N/A	GRAY

OBSOLETE

THIS DRAWING IS A CONTROLLED DOCUMENT.		DRN T. CHRISTENSEN 07MAR02	91-716
DIMENSIONS: mm [INCHES]		CHK W. HANSON 07MAR02	TYCO Electronics Harrisburg, Pa 17105-3608
TOLERANCES UNLESS OTHERWISE SPECIFIED:		APPD B. BURGESS 07MAR02	NAME 8907 SERIES - OVERHANGING SWITCH WITH QUICK CONNECT INTERNAL HEAT SINK DISCRETE COMPONENT CONSTRUCTION
0 PLG ± .	1 PLG ± .	APPLICATION SPEC	SIZE CASE CODE DRAWING NO
2 PLG ± .	3 PLG ± .	WEIGHT	A2 00779 C=1520166
4 PLG ± .	ANGLES ± 1°	FINISH	RESTRICTED TO
MATERIAL		CUSTOMER DRAWING	SCALE 2:1 SHEET 21 of 32 REV AE1

AMP 1471-9 REV 31MAR2000

1520166

A

4

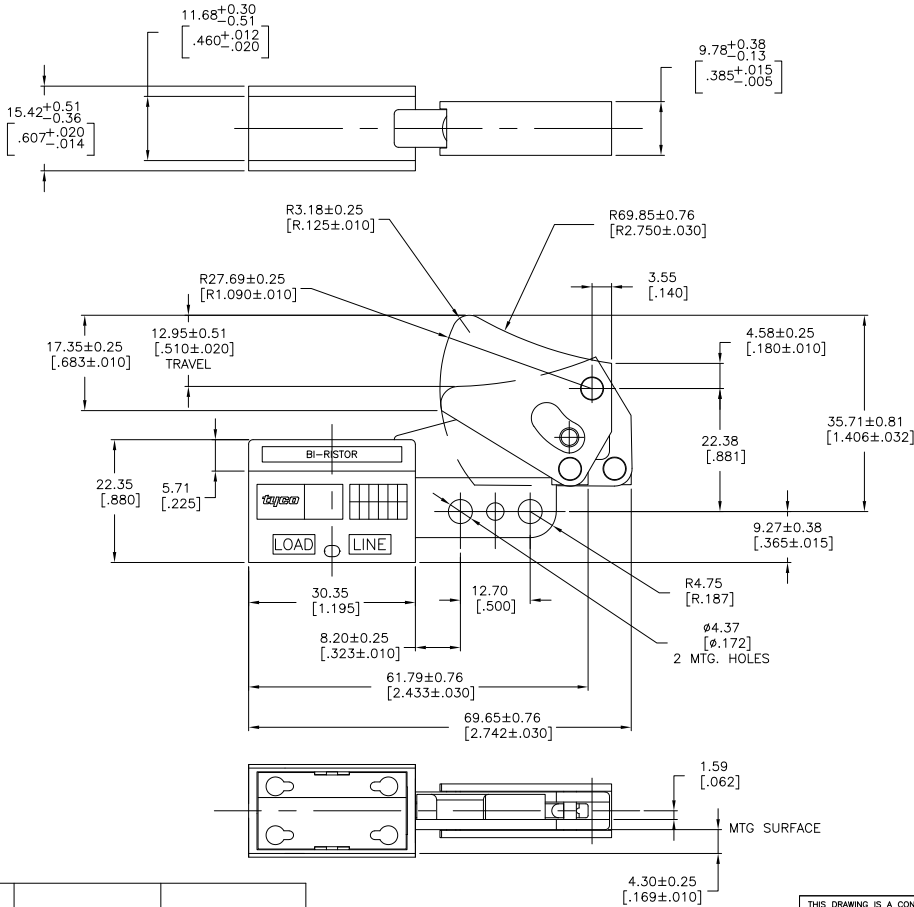
3

2

1

THIS DRAWING IS UNPUBLISHED. RELEASED FOR PUBLICATION. BY TYCO ELECTRONICS CORPORATION. ALL RIGHTS RESERVED.

LOC	DIST	REVISIONS				
AD	00	F	LN	DATE	BY	APPD
		-	SEE SHEET 1	-	-	-



1. PUSH-IN TERMINAL OPENINGS TO RECEIVE #18 OR #20 GA. STRANDED TINNED LEADS. WIRE STRIPPED LENGTH TO BE 6.35-10.16[.250 - .400].

2-1520166-4	8907K492	BLACK
TE SWITCH NO.	ARAB SWITCH NO.	TRIGGER COLOR

THIS DRAWING IS A CONTROLLED DOCUMENT.		DRN	W. Leal/lorD	07MAR02	Tyco Electronics Corporation Harrisburg, Pa 17105-3608	
DIMENSIONS: mm [INCHES]		CHK	-	-	NAME	
TOLERANCES UNLESS OTHERWISE SPECIFIED:		ZIPC	-	-	PRODUCT SPEC	
0 PLG ± .01		APPLICATION SPEC	-	-	8907 SERIES - OVERHANGING SWITCH	
1 PLG ± .01		HEIGHT	-	-	6A 125 VAC / 3A 250 VAC DPST ON-OFF	
2 PLG ± .01		CUSTOMER DRAWING	-	-	Z-SPRING CONSTRUCTION	
3 PLG ± .01		SCALE	2:1	SHEET	22 of 32	RESTRICTED TO
4 PLG ± .01		DATE	00779	REV	1520166	-
ANGLES ± .1°		FINISH	-	-	-	-

AMP 1471-9 REV 31MAR2000

1520166

A

4

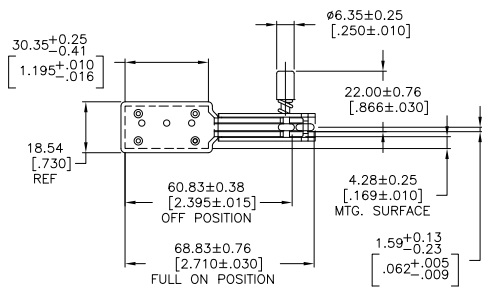
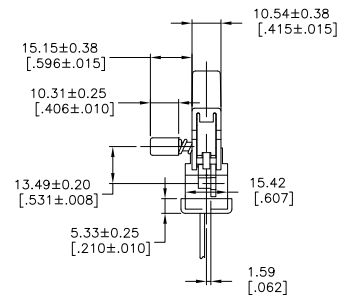
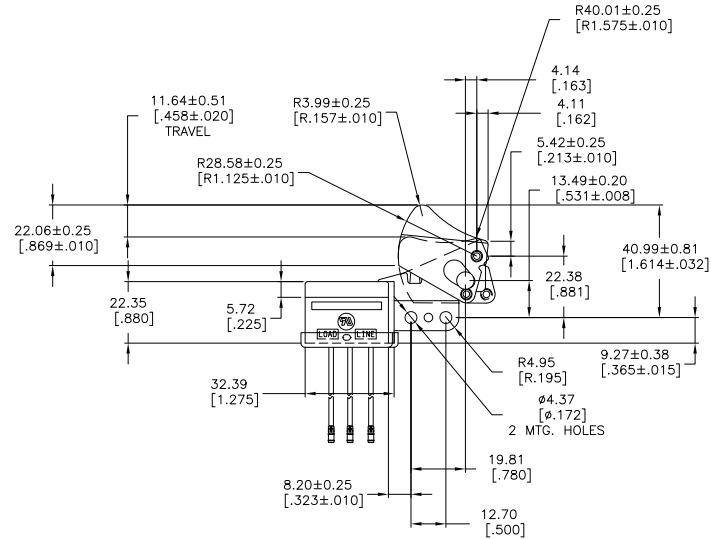
3

2

1

THIS DRAWING IS UNPUBLISHED. RELEASED FOR PUBLICATION. BY TYCO ELECTRONICS CORPORATION. ALL RIGHTS RESERVED.

LOC	DIST	REVISIONS		DATE	BY	APP
AD	00	F	LWR			
		SEE SHEET 1				



1. PUSH-IN TERMINAL OPENINGS TO RECEIVE # 18 GA OR #20 GA STRANDED TINNED LEADS. WIRE STRIP LENGTH 6.35 - 10.16[250 - .400] . (PULL OUT FORCE MUST BE 5 LBS MIN.)
2. PRETRAVEL TO BE 3.81[.150] MAX.
3. INITIAL OPERATING FORCE (MEASURED AT 1.27[.050] DEFLECTION) IS 1.60 LBS±0.5 LBS.
4. HOLD ON FORCE (MEASURED AT 10.16[.400] TRIGGER DEFLECTION) IS 5.10 LBS±1.0 LBS.
5. TOTAL TRAVEL TO BE 10.41[.410] MIN.
6. FORCE TO ENGAGE LOCK PIN MUST BE 3.8 LBS MIN.

TE SWITCH NO.	ARAB SWITCH NO.	LOCK BUTTON COLOR	TRIGGER COLOR
4-1520166-3	8907K429	BLACK	BLACK

THIS DRAWING IS A CONTROLLED DOCUMENT.		DRN W. Leach/D	12JUN01	Tyco Electronics Corporation Harrisburg, Pa 17105-3608	
DIMENSIONS: mm [INCHES]		TOLERANCES UNLESS OTHERWISE SPECIFIED:	APPC	NAME	8907 SERIES-DUST RESISTANT OVERHANGING SWITCH
0 PLG	± .	± .	PRODUCT SPEC	8A 125 VAC DPST WITH 3 POTENTIOMETER LEADS.	RESTRICTED TO
1 PLG	± .	± .	APPLICATION SPEC	2-SPRING CONSTRUCTION	
2 PLG	± .	± .	WEIGHT	SIZE CASE CODE DRAWING NO	
3 PLG	± .	± .		A2 00779 C=1520166	
4 PLG	± .	± .		CUSTOMER DRAWING	SCALE 1:1 SHEET 23 of 32 REV AE1

AMP 1471-9 REV 31MM2000

1520166

A

4

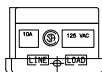
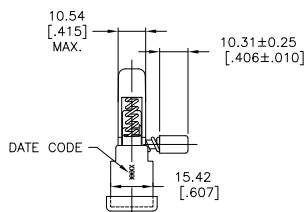
3

2

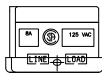
1

THIS DRAWING IS UNPUBLISHED. RELEASED FOR PUBLICATION
 BY TYCO ELECTRONICS CORPORATION. ALL RIGHTS RESERVED.

LOC	DIST	REVISIONS					
AD	00	F	LW	DESCRIPTION	DATE	DM	APD
-	-	-	-	SEE SHEET 1	-	-	-

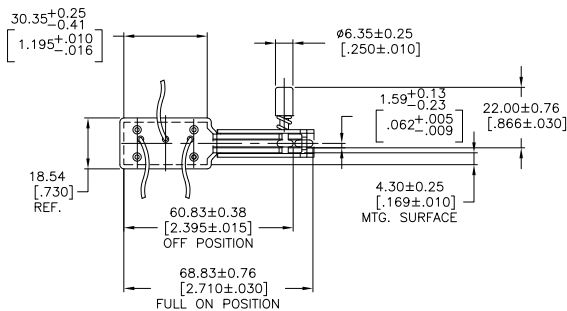
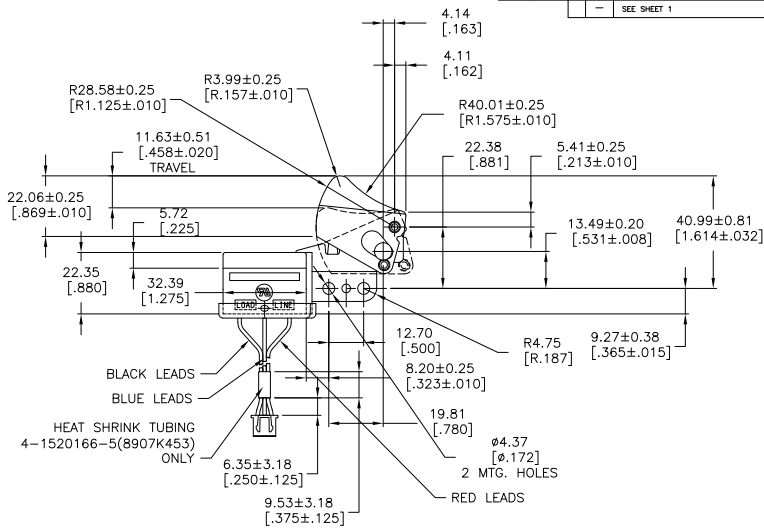


TYCO SWITCH NO. 4-1520166-4
(ARAB PLANT NO. 8907K452)



TYCO SWITCH NO. 4-1520166-5
(ARAB PLANT NO. 8907K453)

1. PUSH-IN TERMINAL OPENINGS TO RECEIVE #18 GA OR #20 GA STRANDED TINNED LEADS. WIRE STRIP LENGTH 6.35-10.16 [.250 - .400].



TE NO.	ARAB NO.	RATING	LOCK BUTTON COLOR	TRIGGER COLOR
4-1520166-4	8907K452	10A 125 VAC	BLACK	BLACK
4-1520166-5	8907K453	8A 125 VAC	BLACK	BLACK

THIS DRAWING IS A CONTROLLED DOCUMENT.

DIMENSIONS		TOLERANCES UNLESS OTHERWISE SPECIFIED	DATE	BY	CHK	REV	APPD
mm [INCHES]			12JUN01	W. Leal/DJD			
0 PL.	± .						
1 PL.	± .						
2 PL.	± .						
3 PL.	± .13(.005)						
4 PL.	± .						
ANGLES	± .						
MATERIAL		FINISH					
			CUSTOMER DRAWING				

TYCO ELECTRONICS CORPORATION		HARRISBURG, PA 17105-3608	
NAME	8907 SERIES-DUST RESISTANT OVERHANGING SWITCH	DATE	
PRODUCT SPEC	DPST WITH 3 LEAD POTENTIOMETER CONNECTOR	REV	
APPLICATION SPEC	7-SPRING CONSTRUCTION	SCALE	1:1
SIZE	A2	SHEET	24 of 32
CAGE CODE	00779	REV	AE1
DRAWING NO.	C=1520166	RESTRICTED TO	

AMP 1471-9 REV 31MM2000

4

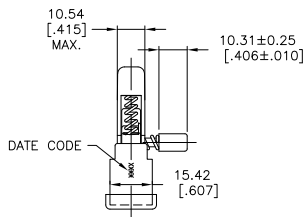
3

2

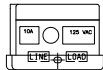
1

THIS DRAWING IS UNPUBLISHED. RELEASED FOR PUBLICATION.
 © COPYRIGHT BY TYCO ELECTRONICS CORPORATION. ALL RIGHTS RESERVED.

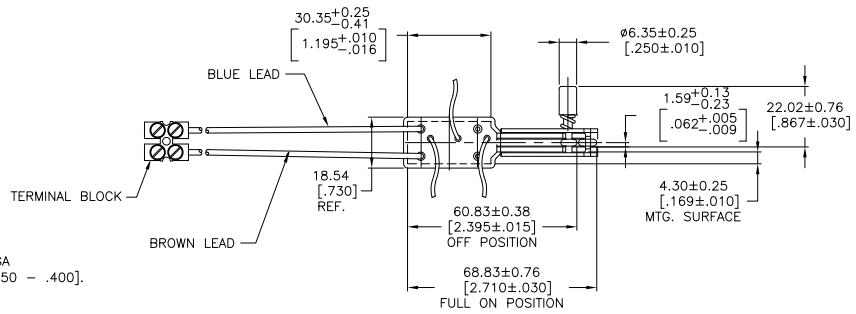
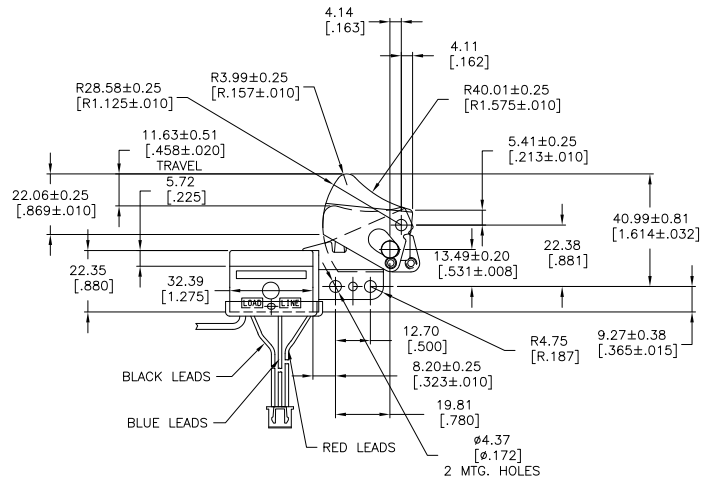
LOC	DIST	REVISIONS					
AD	00	F	LNK	DESCRIPTION	DATE	BY	APPD
				SEE SHEET 1			



TYCO SWITCH NO. 4-1520166-6
(ARAB PLANT NO. 8907K547)



TYCO SWITCH NO. 4-1520166-7
(ARAB PLANT NO. 8907K553)



1. PUSH-IN TERMINAL OPENINGS TO RECEIVE #18 GA OR #20 GA STRANDED TINNED LEADS. WIRE STRIP LENGTH 6.35-10.16[.250 - .400].

TE NO.	ARAB NO.	RATING	LOCK BUTTON COLOR	TRIGGER COLOR
4-1520166-6	8907K547	5A 250 VAC	BLACK	BLACK
4-1520166-7	8907K553	10A 125 VAC	BLACK	BLACK

OBSOLETE

THIS DRAWING IS A CONTROLLED DOCUMENT. DWG No. 12JUN01
 DATE: 12JUN01
 BY: [Signature]
 CHK: [Signature]

TYCO ELECTRONICS Corporation
 Harrisburg, Pa 17105-3608

NAME: 8907 SERIES-DUST RESISTANT OVERHANGING SWITCH
 PRODUCT SPEC: DPST WITH 3 LEAD POTENTIOMETER CONNECTOR
 APPLICATION SPEC: 2-SPRING CONSTRUCTION

DIMENSIONS: mm [INCHES]
 TOLERANCES UNLESS OTHERWISE SPECIFIED:
 0 P.L.C. ± .1
 1 P.L.C. ± .15
 2 P.L.C. ± .2
 3 P.L.C. ± .3
 4 P.L.C. ± .5
 ANGLES: ± .5
 FINISH: -

MATERIAL: -

SIZE: A2
 CASE CODE: 00779
 DRAWING NO: C=1520166
 RESTRICTED TO: -

CUSTOMER DRAWING SCALE: 1:1 SHEET: 25 of 32 REV: AE1

AMP 1471-9 REV 31MMR2000

1520166

B

A

4

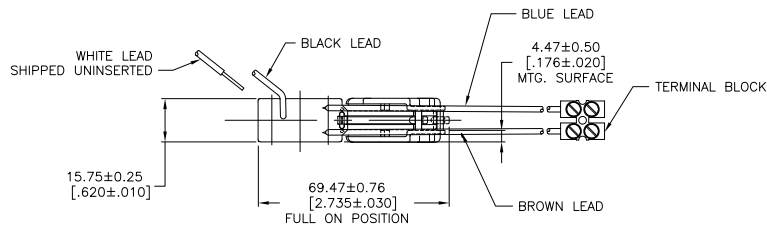
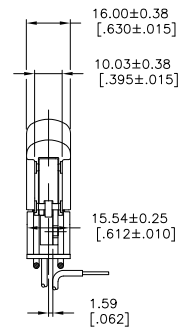
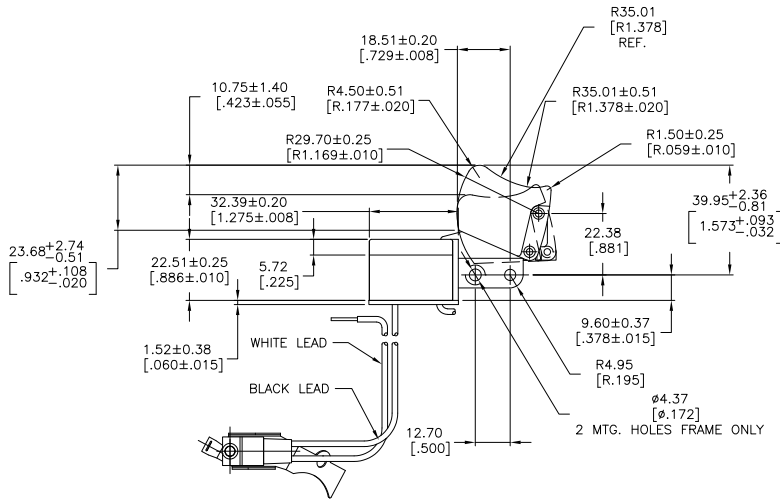
3

2

1

THIS DRAWING IS UNPUBLISHED. RELEASED FOR PUBLICATION
 BY TYCO ELECTRONICS CORPORATION. ALL RIGHTS RESERVED.

LOC	DIST	REVISIONS				
AD	00	F	LW	DATE	DM	APD
				SEE SHEET 1		



- PUSH-IN TERMINAL OPENINGS TO RECEIVE # 18 GA OR #20 GA STRANDED TIN DIPPED WIRE. WIRE STRIP LENGTH 6.35 - 10.16 [.250 - .400] . (PULL OUT FORCE MUST BE 5 LBS MIN.)

4-1520166-0	8907K579	BLACK
TE SWITCH NO.	ARAB SWITCH NO.	TRIGGER COLOR

THIS DRAWING IS A CONTROLLED DOCUMENT.		DM	W. Leal/lorD	DMAR02	Tyco Electronics Corporation Harrisburg, Pa 17105-3608	
DIMENSIONS: mm [INCHES]		CHK			NAME	8907 SERIES-DUST RESISTANT OVERHANGING SWITCH
TOLERANCES UNLESS OTHERWISE SPECIFIED:		APPC			PRODUCT SPEC	SA 250 V DPST WITH EXTERNAL ELECTRONICS
0 PLG ± .					APPLICATION SPEC	2-SPRING CONSTRUCTION
1 PLG ± .					SIZE	A2
2 PLG ± .					QAGE CODE	00779
3 PLG ± 1/16 [.0625]					DRAWING NO	C=1520166
4 PLG ± .					RESTRICTED TO	
ANGLES ± 1°					WEIGHT	
MATERIAL					FINISH	
					CUSTOMER DRAWING	SCALE 1:1 SHEET 26 of 32 REV AE1

AMP 1471-9 REV 31MM2000

1520166

A

4

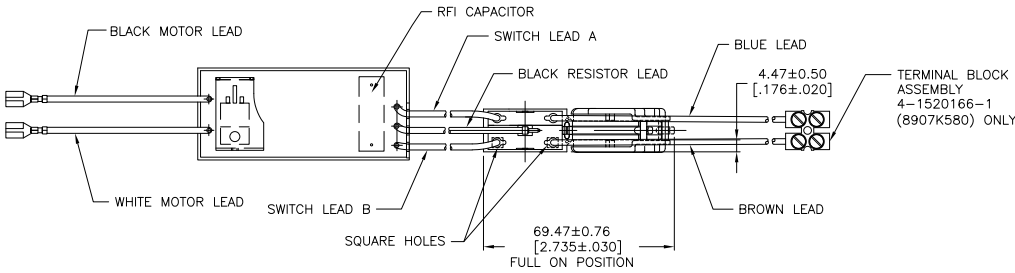
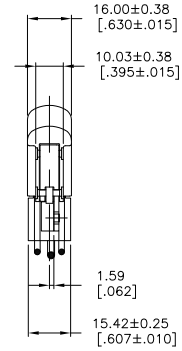
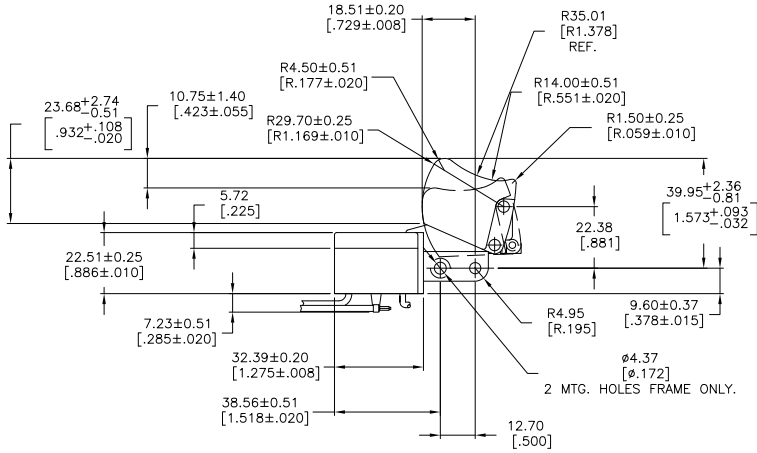
3

2

1

THIS DRAWING IS UNPUBLISHED. RELEASED FOR PUBLICATION.
 © COPYRIGHT BY TYCO ELECTRONICS CORPORATION. ALL RIGHTS RESERVED.

LOC	DIST	REVISIONS			
F	LN	DESCRIPTION	DATE	BY	APPD
AD	00	SEE SHEET 1			



- PUSH-IN TERMINAL OPENINGS TO RECEIVE # 18 GA OR #20 GA STRANDED TIN DIPPED WIRE. WIRE STRIP LENGTH 6.35 - 10.16 [.250 - .400] . (PULL OUT FORCE MUST BE 5 LBS MIN.)
- SEE 91-782 ON CUSTOMER DWG C-1520166 SHT19 FOR DIMENSIONS OF EXTERNAL SPEED CONTROL MODULE.

TE SWITCH NO.	ARAB SWITCH NO.	TRIGGER COLOR	LEAD A	LEAD B
6-1520166-3	8907K556	BLACK	BLUE	BROWN
4-1520166-1	8907K580	BLACK	BLUE	BROWN

THIS DRAWING IS A CONTROLLED DOCUMENT.		DRN	W. Leq/norD	12JAD1	
DIMENSIONS: mm [INCHES]		CHK			
TOLERANCES UNLESS OTHERWISE SPECIFIED:		NAME	Tyco Electronics Corporation Harrisburg, Pa 17105-3608		
0 PLG ± .		PRODUCT SPEC	8907 SERIES-DUST RESISTANT OVERHANGING SWITCH		
1 PLG ± .		APPLICATION SPEC	5A 250 VAC W / EXTERNAL MODULE & TERMINAL BLOCK, Z-SPRING CONSTRUCTION		
2 PLG ± .		SIZE	A2		
3 PLG ± .		ONE CODE (DRAWING NO)	00779C=1520166		
4 PLG ± .		RESTRICTED TO			
ANGLES ± °		WEIGHT			
MATERIAL		CUSTOMER DRAWING	SCALE	1:1	SHEET 27 of 32 REV AE1
FINISH					

AMP 1471-9 REV 31MM2000

1520166

A

4

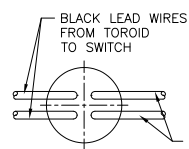
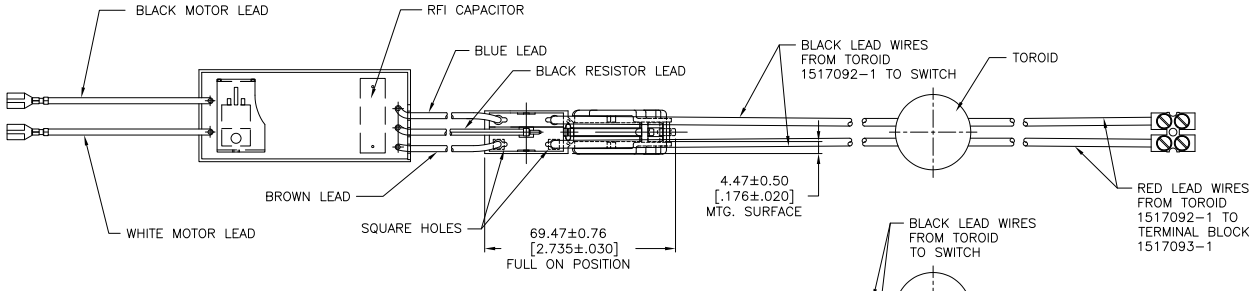
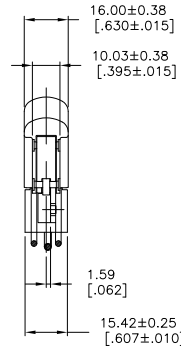
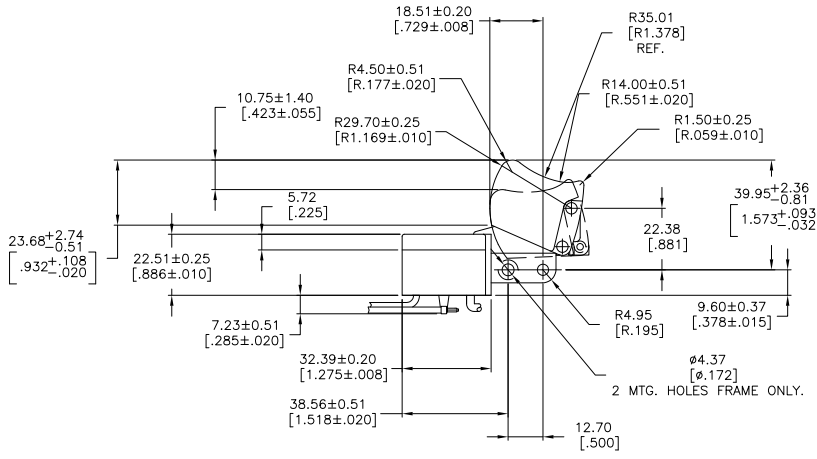
3

2

1

THIS DRAWING IS UNPUBLISHED. RELEASED FOR PUBLICATION.
 © COPYRIGHT BY TYCO ELECTRONICS CORPORATION. ALL RIGHTS RESERVED.

LOC	DIST	REVISIONS		
AD	00	F	LN	DATE
		-	SEE SHEET 1	-



- PUSH-IN TERMINAL OPENINGS TO RECEIVE # 18 GA OR #20 GA STRANDED TIN DIPPED WIRE. WIRE STRIP LENGTH 6.35 - 10.16 [.250 - .400]. (PULL OUT FORCE MUST BE 5 LBS MIN.)
- SEE 91-782 ON CUSTOMER DWG C-1520166 SHT19 FOR DIMENSIONS OF EXTERNAL SPEED CONTROL MODULE.

TE SWITCH NO.	ARAB SWITCH NO.	TRIGGER COLOR
8-1520166-3	N/A	GREY
6-1520166-5	8907K585	BLACK

THIS DRAWING IS A CONTROLLED DOCUMENT.		DRN	W. LeatorD	12JAU01	
DIMENSIONS: mm [INCHES]		CHK			
TOLERANCES UNLESS OTHERWISE SPECIFIED:		NAME	Tyco Electronics Corporation Harrisburg, Pa 17105-3608		
Ø PLG	± .005	PRODUCT SPEC	8907 SERIES-DUST RESISTANT OVERHANGING SWITCH		
Ø PLG	± .005	APPLICATION SPEC	5A 250 VAC W / EXTERNAL MODULE & TERMINAL BLOCK, Z-SPRING CONSTRUCTION		
Ø PLG	± .005	SIZE	A2		
Ø PLG	± .005	ONE CODE (DRAWING NO)	00779C=1520166		
ANGLES	± 1°	RESTRICTED TO			
MATERIAL	FRESH	WEIGHT			
CUSTOMER DRAWING		SCALE	1:1		
		SHEET	28 of 32		
		REV	AE1		

AMP 1471-9 REV 31MM2000

1520166

A

4

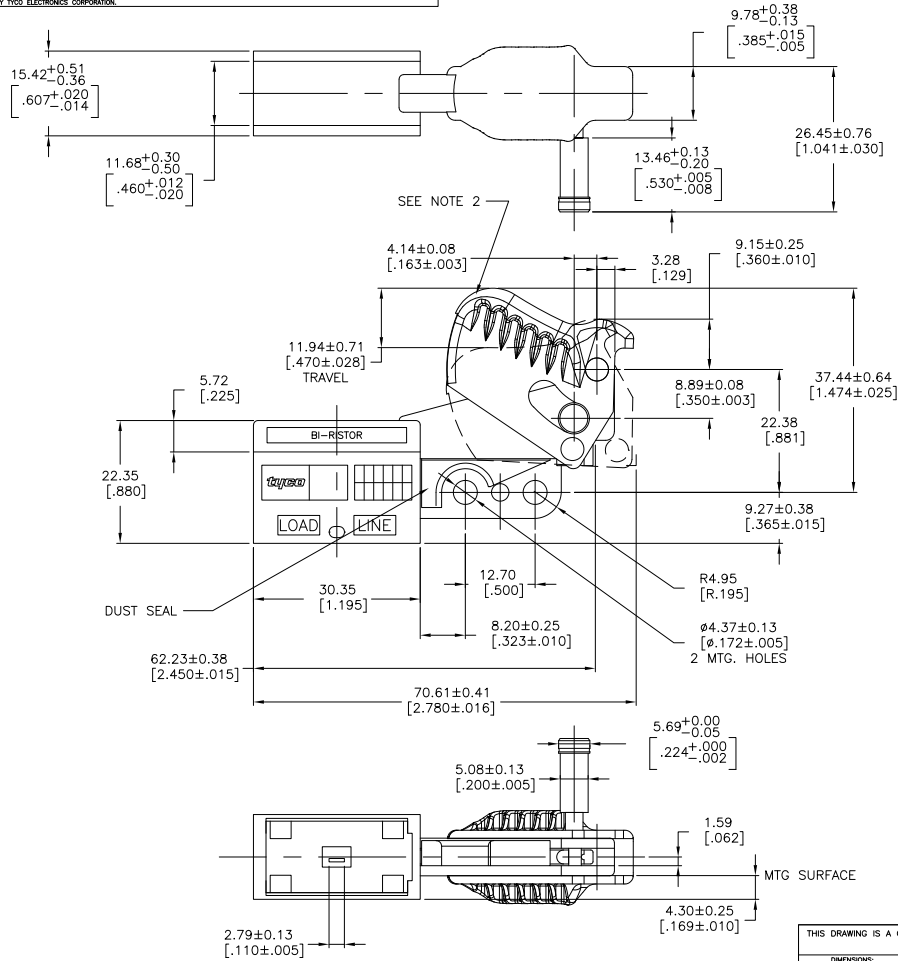
3

2

1

THIS DRAWING IS UNPUBLISHED. RELEASED FOR PUBLICATION. BY TYCO ELECTRONICS CORPORATION. ALL RIGHTS RESERVED.

LOC	DIST	REVISIONS		DATE	BY	APP'D
AD	00	F	LW			
		SEE SHEET 1				



1. PUSH-IN TERMINAL OPENINGS TO RECEIVE #18 GA. OR #20 GA. STRANDED TIN DIPPED WIRE. WIRE STRIP LENGTH 6.35-10.16[.250 - .400].
2. NO SWITCH CONDUCTIVITY ALLOWED WHEN 8 LB MAX FORCE IS APPLIED TO TRIGGER IN DIRECTION SHOWN BY ARROW WHILE LOCK PIN IS DISENGAGED.

TE SWITCH NO.	ARAB SWITCH NO.	LOCK BUTTON COLOR	TRIGGER COLOR
7-1520166-7	8907K589	BLACK	BLACK
5-1520166-4	8907K584	BLACK	BLACK

SUPERSEDED BY 7-1520166-7

THIS DRAWING IS A CONTROLLED DOCUMENT.		DRN	W. LeatorD	2006001	Tyco Electronics Corporation Harrisburg, Pa 17105-3608
DIMENSIONS: mm [INCHES]		CHK	J. HUGGINS	2106001	
TOLERANCES UNLESS OTHERWISE SPECIFIED:		APP'D			NAME
0 PLG	± .-	PRODUCT SPEC			8907 SERIES - OVERHANGING SWITCH
1 PLG	± .-	APPLICATION SPEC			4.5A 250 VAC DPST WITH INTERNAL QUICK CONNECT HEAT SINK, DISCRETE COMPONENT CONSTRUCTION
2 PLG	± .-	WEIGHT			SIZE: 1006 CODE (DRAWING NO)
3 PLG	± .13(.005)	CUSTOMER DRAWING			A200779 ©=1520166
4 PLG	± .13(.005)	SCALE		2:1	SHEET 29 of 32
ANGLES	± .1°	REV		AE1	
MATERIAL	FRESH				

AMP 1471-9 REV 31MM2000

1520166

A

4

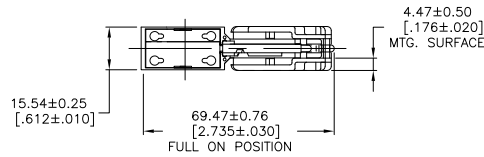
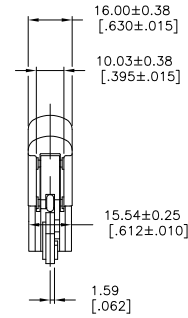
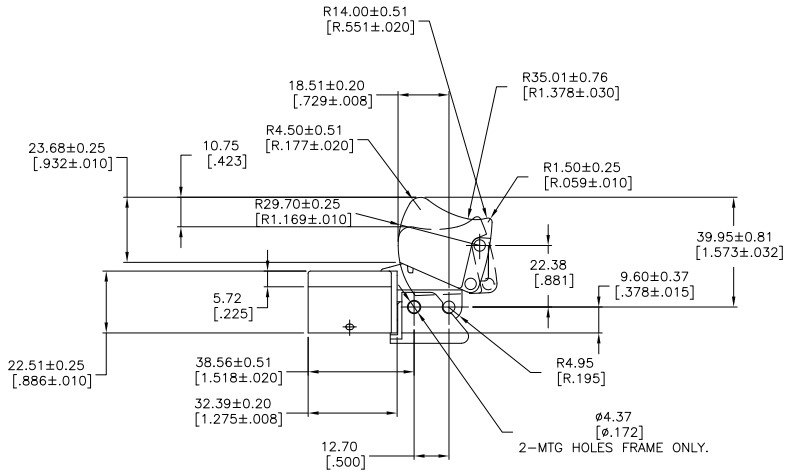
3

2

1

THIS DRAWING IS UNPUBLISHED. RELEASED FOR PUBLICATION
 BY TYCO ELECTRONICS CORPORATION. ALL RIGHTS RESERVED.

LOC	DIST	REVISIONS		
F	LNK	DESCRIPTION	DATE	BYN
AD	00	SEE SHEET 1	-	-



8-1520166-9	N/A	BLACK	12A/125VAC
7-1520166-3	8907K9	BLACK	11A/125VAC
TE SWITCH NO.	ARAB SWITCH NO.	TRIGGER COLOR	CURRENT RATING

DIMENSIONS		TOLERANCES UNLESS OTHERWISE SPECIFIED	APPROVED	NAME
mm [INCHES]	0 PLC ± .1	1 PLC ± .1	2 PLC ± .1	3 PLC ± .1
	4 PLC ± .1	ANGLES ± 1°	FINISH	
MATERIAL				
-				

THIS DRAWING IS A CONTROLLED DOCUMENT.	DRN W. Leq/norD	05APR02	Tyco Electronics Corporation
CHK			Harrisburg, Pa 17105-3608
	W. HANSON		8907 SERIES-DUST RESISTANT OVERHANGING SWITCH
			11A 125 VAC SPST WITH BUSSING AND 2ND HEAT SINK, Z-SPRING / D-PAK CONSTRUCTION
APPLICATION SPEC			RESTRICTED TO
WEIGHT			SIZE CODE DRAWING NO
			A2 00779 C=1520166
CUSTOMER DRAWING		SCALE 1:1	SHEET 30 of 32 REV AE1

AMP 1471-9 REV 31MAR2000

1520166

B

A

4

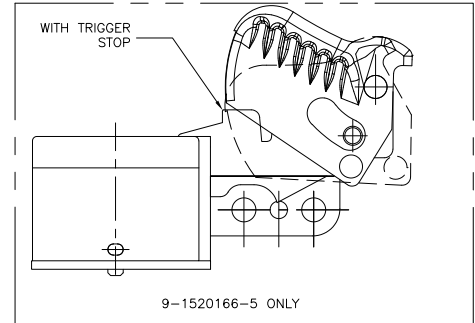
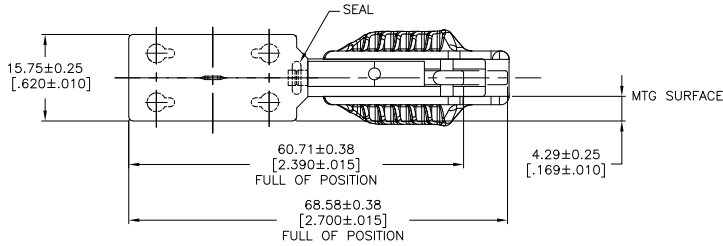
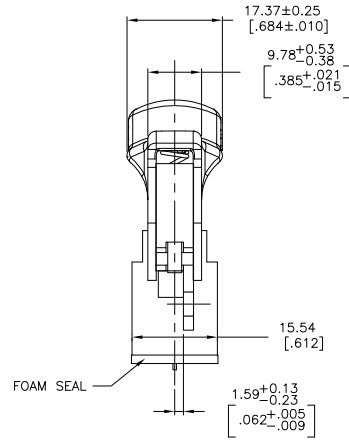
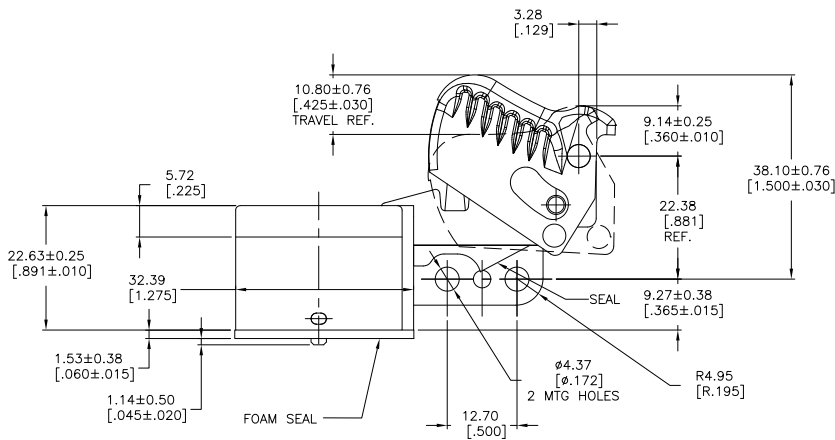
3

2

1

THIS DRAWING IS UNPUBLISHED. RELEASED FOR PUBLICATION
 BY TYCO ELECTRONICS CORPORATION. ALL RIGHTS RESERVED.

LOC	DIST	REVISIONS					
AD	00	F	LNK	DESCRIPTION	DATE	BY	APPD
		-	-	SEE SHEET 1			



- PUSH-IN TERMINAL OPENINGS TO RECEIVE #16 OR #18 GA. STRANDED TINNED LEADS. WIRE STRIPPED LENGTH TO BE 7.62-10.16[.300 - .400].
- OUTSIDE CONTOURS TO BE PER METCO PRO-E FILE 23-66-1965_trigger

TE SWITCH NO.	ARAB SWITCH NO.	TRIGGER COLOR	
-6-1520166-7	8907K22	BLACK	OBSOLETE
9-1520166-5	-	BLACK	

THIS DRAWING IS A CONTROLLED DOCUMENT.		DRN	W. Leal/dorD	13JUG22	
DIMENSIONS: mm [INCHES]		CHK			
TOLERANCES UNLESS OTHERWISE SPECIFIED:		TYCO ELECTRONICS		Tyco Electronics Corporation Harrisburg, Pa 17105-3608	
0 PLG ± .	1 PLG ± .	APPC	W. HANSON	NAME	8907 SERIES-DUST RESISTANT OVERHANGING SWITCH
2 PLG ± .	3 PLG ± .	PRODUCT SPEC			12A 125 VAC DPST WITH EXTERNAL QUICK CONNECT
4 PLG ± .	ANGLES ± 1°	APPLICATION SPEC			HEAT SINK, Z-SPRING CONSTRUCTION
MATERIAL	FINISH	WEIGHT		SIZE	CAGE CODE (DRAWING NO)
				A2	00779
					1520166
				CUSTOMER DRAWING	SCALE
					2:1
					SHEET
					31 of 32
					REV
					AE1

AMP 1471-9 REV 31MM2000

1520166

A

4

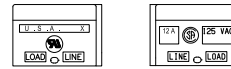
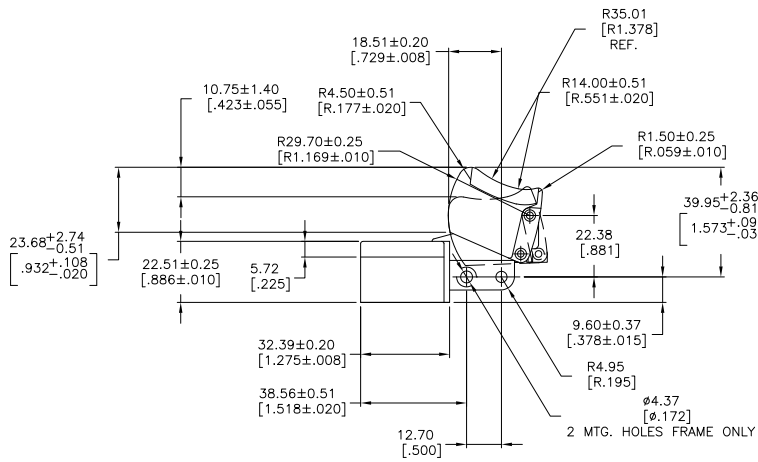
3

2

1

THIS DRAWING IS UNPUBLISHED. RELEASED FOR PUBLICATION
 © COPYRIGHT BY TYCO ELECTRONICS CORPORATION. ALL RIGHTS RESERVED.

LOC	DIST	REVISIONS			
F	LNK	DESCRIPTION	DATE	BY	APPD
		SEE SHEET 1			



9-1520166-0
 SWITCH MARKINGS

- PUSH-IN TERMINAL OPENINGS TO RECEIVE # 16 GA OR #18 GA STRANDED TIN DIPPED WIRE. WIRE STRIP LENGTH 6.35 - 10.16 [.250 - .400]. (PULL OUT FORCE MUST BE 5 LBS MIN.)

△ ZAP GREY COLOR DEFINITION, CUTOMER P/N 490844060 (PA66 + 30%G.F.)

9-1520166-0	N/A	12A 125VAC SWITCH	BLACK W/ZAP GREY SOFT GRIP	△
TE SWITCH NO.	ARAB SWITCH NO.	DESCRIPTION	TRIGGER COLOR	

THIS DRAWING IS A CONTROLLED DOCUMENT.		DRN W. HANSON 28JUG97	Tyco Electronics Corporation Harrisburg, Pa 17105-3608	
DIMENSIONS: mm [INCHES]	TOLERANCES UNLESS OTHERWISE SPECIFIED:	CHK. W. Leontyev 10SEP97	NAME M.R. DUMMER 10SEP97	RESTRICTED TO
0 PLC ± .005	1 PLC ± .005	APPLICATION SPEC	SIZE A2	00779
2 PLC ± .005	3 PLC ± .005	WEIGHT	C=1520166	32 of 32
4 PLC ± .005	ANGLES ± .1°	FINISH	CUSTOMER DRAWING	SCALE 1:1 SHEET 32 of 32 REV AE1

AMP 1471-9 REV 31MM2000

1520166

A