

# Waterproof Limit Switches Series 83 141

## Standard sensitive microswitch

83 141 002 - (55 °C +150 °C)  
Without accessories



## Connections

Solder tags

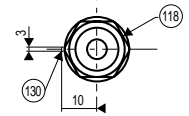
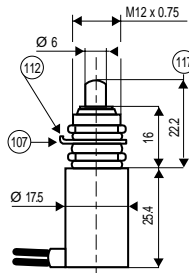
## Characteristics

Nominal current	10 V $\equiv$	A	0.01
Resistive	30 V $\equiv$	A	4
	220 V $\sim$	A	1
Inductive L/R = 0.005 s	30 V $\equiv$	A	2
	220 V $\sim$	A	0.5
Service life at nominal current <sup>(1)</sup> - operations			100,000
Operating temperature		°C	-55 +150
Max. operating force		N	2
Min. release force		N	0.4
Max. pre-travel		mm	0.5
Max. differential travel		mm	0.08
Min. overtravel		mm	0.1
Weight		g	1

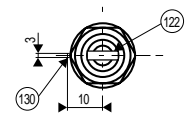
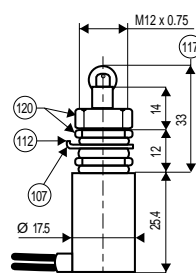
<sup>(1)</sup> Value for microswitch without control button

- 107 - Stop washer width 0.8
- 112 - Locating pin
- 117 - Free position
- 118 - Nuts h. 2.5 - 15 across flat
- 120 - Nuts h. 2.5 and 6 - 15 across flat
- 121 - Nuts h. 3 and 6 - 21 across flat
- 122 - Roller Ø 9.6 - width 3
- 130 - Pin h.2

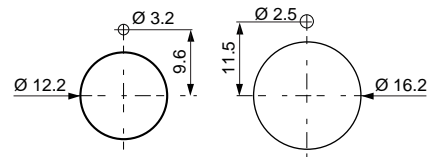
83 777 021



83 778 021



## Panel cut-out



## Dimensions – mm



## Part numbers

1 pole	83 777 021	83 778 021
With plunger	•	
With plunger and roller		•
Output with perpendicular wires	•	•

## Characteristics

Max. operating force	N	60	60
Min. release force	N	10	10
Max. total travel force	N	150	150
Max. pre-travel	mm	1.2	1.2
Max. differential travel	mm	0.2	0.2
Min. overtravel	mm	3.2	3.2
Weight (with wires)	g	30	37

## General characteristics

Nominal current	10 V $\equiv$	A	0.01
Resistive	30 V $\equiv$	A	4
	220 V $\sim$	A	1
Inductive L/R = 0.005 s	30 V $\equiv$	A	2
	220 V $\sim$	A	0.5
Service life at nominal current (min. operations)			50,000
Dielectric strength between connections and ground	V		1500
Dielectric strength between connections	V		1000
Insulation resistance (at 500 Vdc)	M		100
Voltage drop at 1 A*	V		0.06
Operating temperature	°C		-55 +125
Resistance to shock	g/ms		50/11
Resistance to vibration	g/Hz		10/20 → 2000

\* For flying leads, add 0.1 V/metre.

## To order, specify :

Standard products, non stocked



Part number

Example : Waterproof limit switch - 83 777 021

Products and specifications subject to change without notice.

Order/Technical Support – Tel: (800) 677-5311 / FAX: (800) 677-3865 / www.crouzet-usa.com