

MATERIAL BASE NYLON 6/6 W/15% GLASS FIBRE (BLACK)
 ARM NYLON 6/6 W/30% GLASS FIBRE (BLACK)
 CONNECTOR: 94V-0 POLYESTER W/30% GLASS FIBRE (BLACK)

OPERATING PARAMETERS

- 1.) OFF POINT: LESS THAN 15° ROTATION FROM REST POSITION
- 2.) ON POINT: GREATER THAN 2° ROTATION FROM REST POSITION

CONTACT RATINGS

- CONTACT CAPACITY= 10 WATTS MAX.
- SWITCHING VOLTAGE= 200 Vdc MAX.
- SWITCHING CURRENT= .500 Adc MAX.
- CONTACT RESISTANCE= .200 OHM MAX.

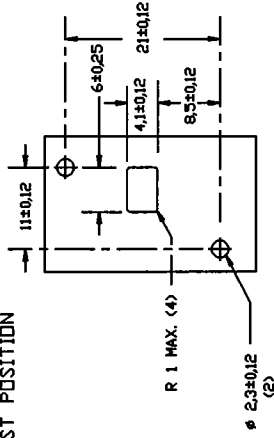
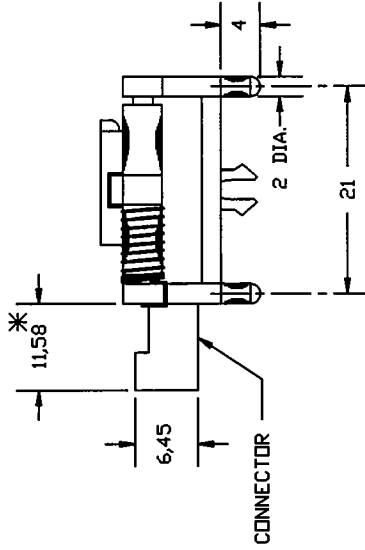
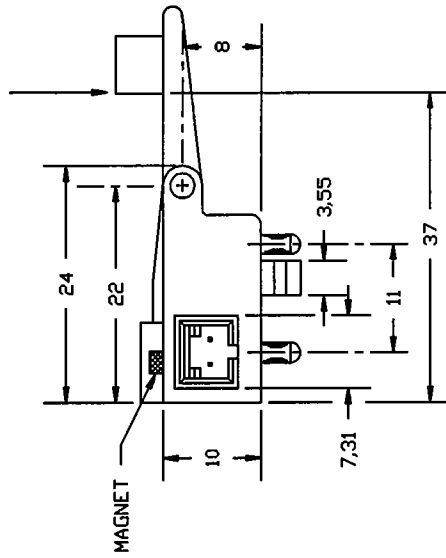
CONNECTOR PINS .025 IN², GOLD PLATED PHOSPHOR BRONZE

* KEY DIMENSIONS

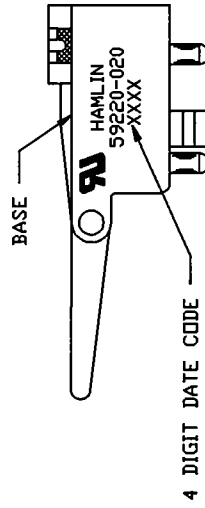
ALL DIMENSIONS IN MM

TOLERANCES: ±0.25 UNLESS OTHERWISE SPECIFIED

ACTUATION FORCE 4 GRAMS NOMINAL



MATERIAL TO BE 1.6±0.21 THICK
 SWITCH MOUNTING HOLE PATTERN



4 DIGIT DATE CODE

SWITCH ASSEMBLY

H A M L I N, I N C. DCR No. 4008

AC	REVISE PACKAGING, REFORMAT	A3903	JC	7/30/96	JC	7/30/96	Dwn.	DATE	D10-59220-020
REV.	DESCRIPTION OF REVISION	DCR No.	BY	DATE	APP.	DATE	App'd	RLB	Page 1 of 1