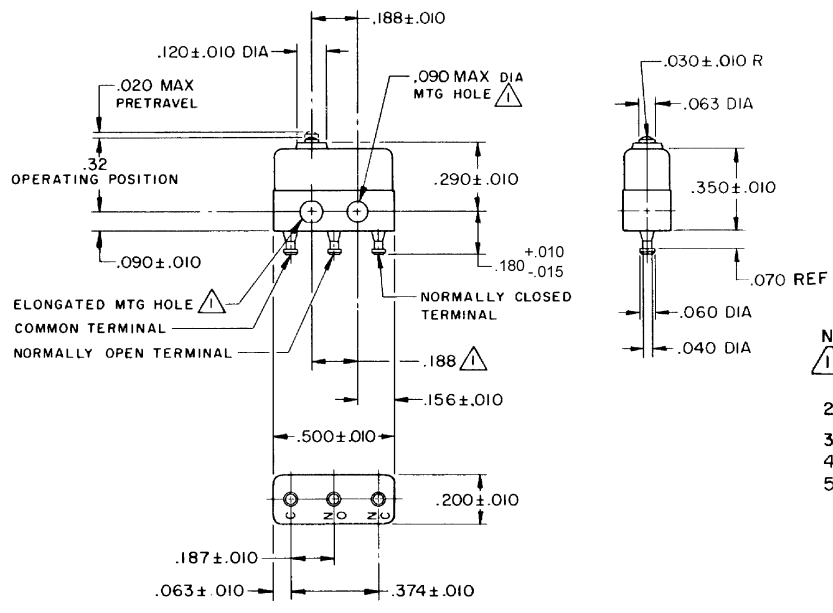
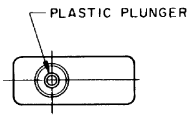


FO-55111-A

HONEYWELL
PART NUMBER
12SX3-T
PRODUCT CODE
VDK1075

REV	DOCUMENT	CHANGED BY	CHECK
12	0060324	VKR 12JAN10	CMH



- NOTES**
- 1 MOUNTING HOLES WILL ACCEPT PINS OR SCREWS OF .087 MAX DIA ON .188 ± .002 CENTERS
 - 2 - TERMINALS ARE SOLDER DIPPED WITH ROHS-COMPLIANT TIN/COPPER/SILVER SOLDER
 - 3 - SWITCH WILL WITHSTAND TEMPERATURE OF 250° F
 - 4 - MOVABLE CONTACT MATERIAL - 24K SOLID GOLD
 - 5 - STATIONARY CONTACT MATERIAL - GOLD ALLOY

RELEASE NO.	PR-1410
REPLACES	

CHARACTERISTICS
OPERATING FORCE - - - 2.5 - 5 OZ MAX
RELEASE FORCE - - - - 1 OZ MIN
DIFFERENTIAL TRAVEL - - - .001 MAX
OVERTRAVEL - - - - - .004 MIN

ELECTRICAL DATA	
CONTACT ARRANGEMENT S-P-D-T	
28 VOLTS DC RATING	
INDUCTIVE	SEA LEVEL 50,000 FT
RESISTIVE	.010 AMP
APPROVALS	
KEMA CE	1A 250 V - T125 25E3
UL CSA	1A 125 VAC

DESIGN UNITS: INCH	
TOLERANCES UNLESS NOTED:	
NO PLACE	X ±
ONE PLACE	.X ±
TWO PLACE	.XX ±
THREE PLACE	.XXX ±
FOUR PLACE	.XXXX ±
ANGLES	±
THIRD ANGLE PROJECTION	

DRAWN	SPK	13FEB08
CHECK	RJ	13FEB08
THIS DRAWING COVERS A PROPRIETARY ITEM AND IS THE PROPERTY OF HONEYWELL. THIS DRAWING IS NOT TO BE COPIED OR USED WITHOUT THE PERMISSION OF HONEYWELL.		
INTERPRET PER ANSI Y14.5M-1982 OTHER HONEYWELL ENGINEERING STANDARDS MAY APPLY		
RASTER		

Honeywell			
TITLE SWITCH - BASIC			
SIZE	TYPE	DRAWING NAME	REV
B	I	12SX3-T	12
SCALE	-	WEIGHT:.003 LB MAX	SHEET 1 OF 1

4

3

2

1