



MICRO SWITCH

FREEPORT, ILLINOIS, U. S. A.
A DIVISION OF HONEYWELL

FED. MFG. CODE 91929

SWITCH - BASIC

CATALOG LISTING

BZ-2RS

DRAWING NUMBER
BZ-2RS
PAGE 1 OF 1

ISSUE
M

16

REVISIONS

A	CO17410	6 C H	11 APRIL 63
B	CO44156	S J S	20 APR 78
C	CO46304	J A P	15 OCT 79
D	CO 58037	SMA	1 OCT 85
E	CO-78874	DLT	18 NOV 94
F	CO93346	DLT	11 SEP 98
G	CO-94212-J	J J A	11 OCT 99

REPLACES

RELEASE NO.

CHECK

CHECK

L.S.D 22 APR 63

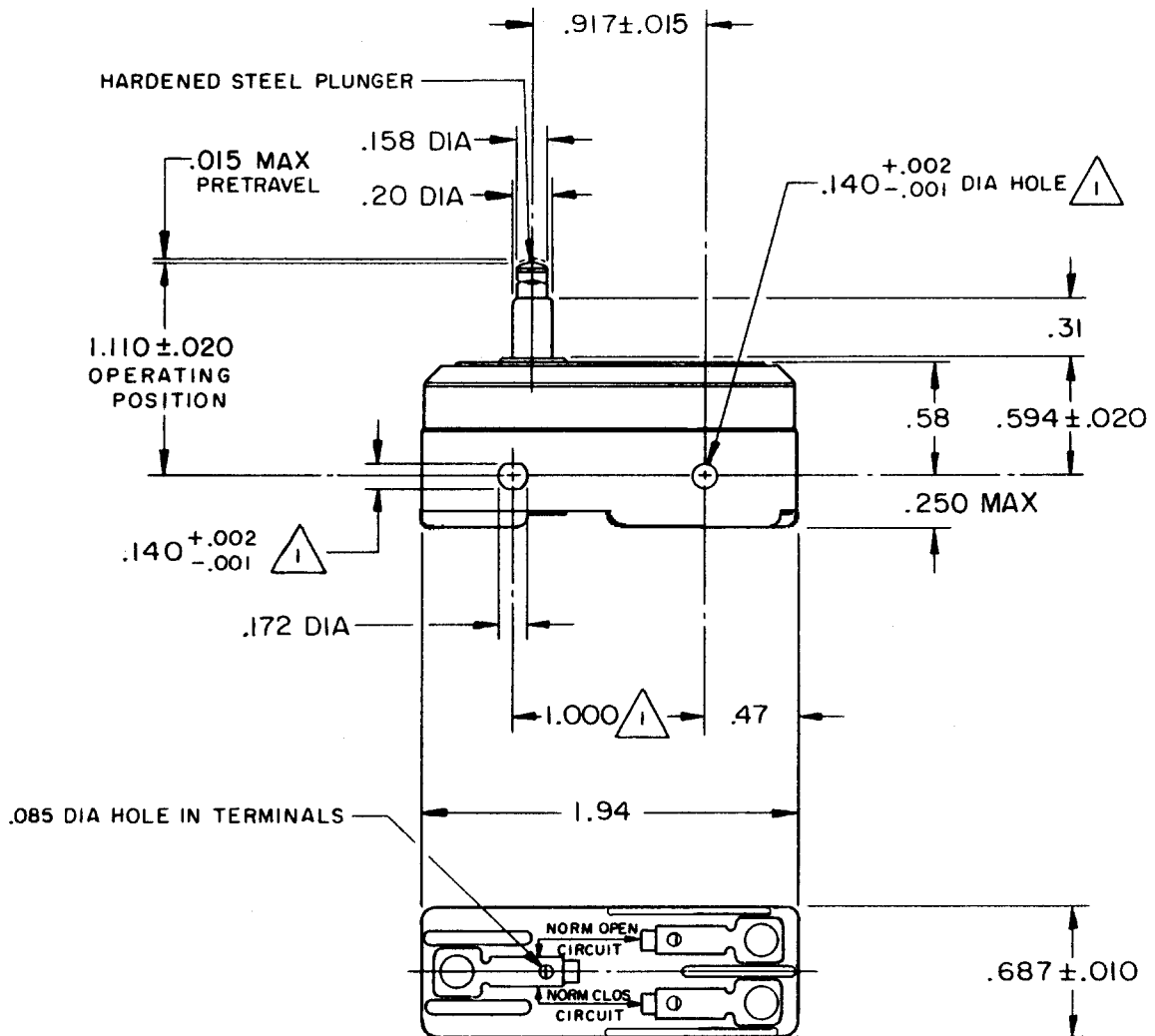
CHECK

FORMTEK
FO-80378

DRAWN

CHECK

G C H 11 APRIL 63



NOTE
 MOUNTING HOLES WILL ACCEPT PINS OR SCREWS
 OF .139 MAX DIA ON 1.000±.002 CENTERS

THIS DRAWING COVERS A PROPRIETARY ITEM AND IS THE PROPERTY OF MICRO SWITCH, A DIVISION OF MINNEAPOLIS-HONEYWELL REGULATOR CO. THIS DRAWING IS NOT TO BE COPIED OR USED WITHOUT THE APPROVAL OF MICRO SWITCH.

CHARACTERISTICS	ELECTRICAL DATA	SCALE FULL
OPERATING FORCE ----- 9 - 13 OZ	CONTACT ARRANGEMENT S P D T	DO NOT SCALE PRINT
RELEASE FORCE ----- 4 OZ MIN	UL LISTED-FILE E12252 CODE L96 15A-125, 250 OR 480 VAC 1/8 HP-125 VAC; 1/4 HP-250 VAC 1/2 A-125 VDC; 1/4 A-250 VDC	UNLESS OTHERWISE NOTED DIMENSIONS ARE IN INCHES TOLERANCES ARE:
DIFFERENTIAL TRAVEL ----- .0004 - .0020	L288	ONE PLACE (.0) ±.030
OVERTRAVEL ----- .060 MIN	L299	TWO PLACE (.00) ±.015
	L306 16A 250V ~ T85 5E4	THREE PLACE (.000) ±.005
		ANGLES ±
		WEIGHT .050 LB