



# MICRO SWITCH

FREEPORT, ILLINOIS, U.S.A.  
A DIVISION OF HONEYWELL

FED. MFG. CODE 91929

# SWITCH - BASIC

CATALOG LISTING

## BZ-2RL

DRAWING NUMBER **BZ-2RL** PAGE 1 OF 1

ISSUE **M** 12

REVISIONS

A	CO17410	GCH	20 JUNE 63
B	CO46304	JAF	12 OCT 79
C	CO58037	SMA	1 OCT 85
D	CO78874	DLT	18 NOV 94
E	CO93346	DLT	9 SEP 98
F	CO94212-J	CO	5 OCT 99

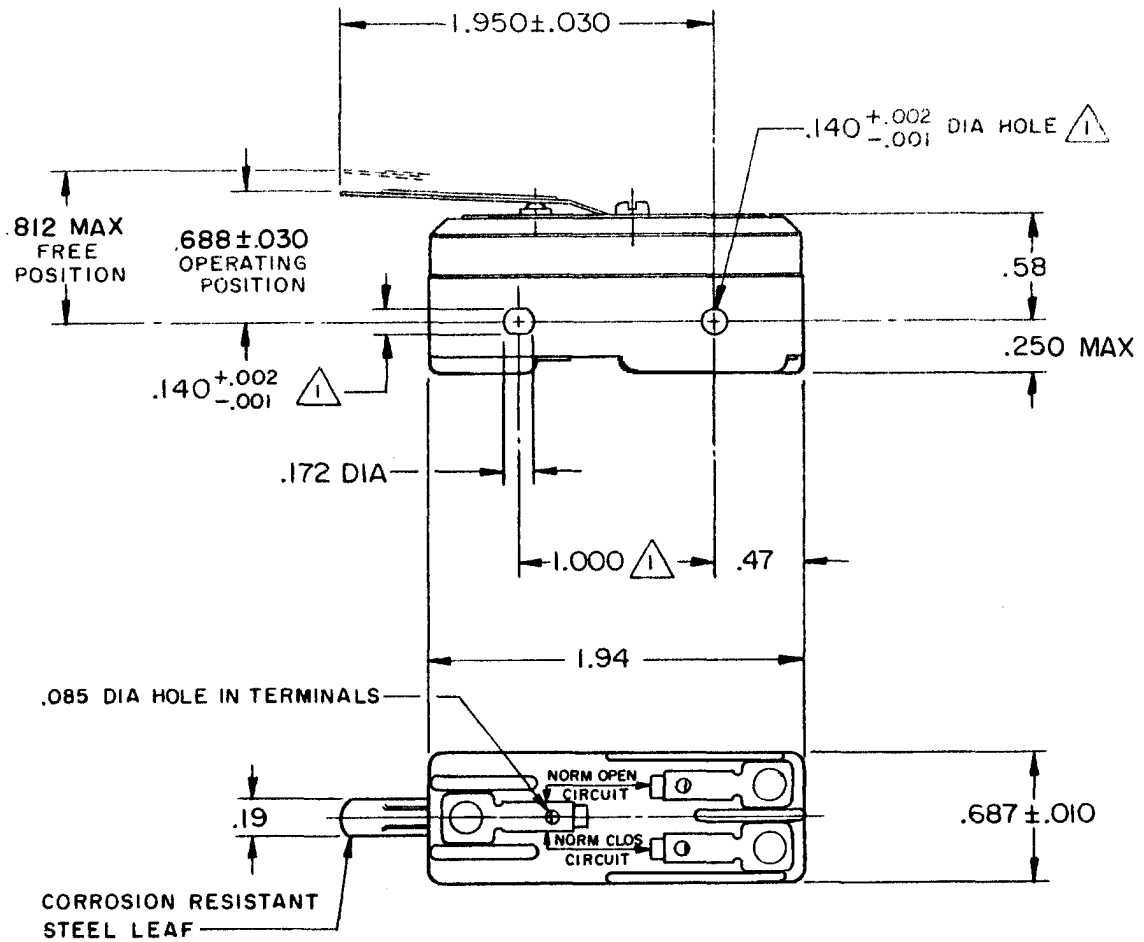
FORMTEK FO-90378

DRAWN GCH 20 JUNE 63

CHECK L.S.D 21 JUN 63

RELEASE NO.

REPLACES



NOTE  
 △ MOUNTING HOLES WILL ACCEPT PINS OR SCREWS  
 OF .139 MAX DIA ON 1.000 ± .002 CENTERS

THIS DRAWING COVERS A PROPRIETARY ITEM AND IS THE PROPERTY OF MICRO SWITCH, A DIVISION OF MINNEAPOLIS-HONEYWELL REGULATOR CO. THIS DRAWING IS NOT TO BE COPIED OR USED WITHOUT THE APPROVAL OF MICRO SWITCH.

CHARACTERISTICS	ELECTRICAL DATA	SCALE FULL
OPERATING FORCE ----- 5 OZ MAX	CONTACT ARRANGEMENT S P D T	DO NOT SCALE PRINT
RELEASE FORCE ----- 1/2 OZ MIN	UNDERWRITERS' LAB. INC. LISTED RATING	UNLESS OTHERWISE NOTED
DIFFERENTIAL TRAVEL ----- .050 MAX	-L96- 15 A - 125, 250, OR 480 VAC	DIMENSIONS ARE IN INCHES
DO NOT OVERTRAVEL MORE THAN ----- .060	1/2 A - 125 VDC; 1/4 A - 250 VDC	<b>TOLERANCES ARE:</b>
	1/8 HP - 125 VAC; 1/4 HP - 250 VAC	ONE PLACE (.0) ± .030
	CE D SP	TWO PLACE (.00) ± .015
	16A 250V ~ T85 5E4	THREE PLACE (.000) ± .005
		ANGLES ±
		WEIGHT .050 LB