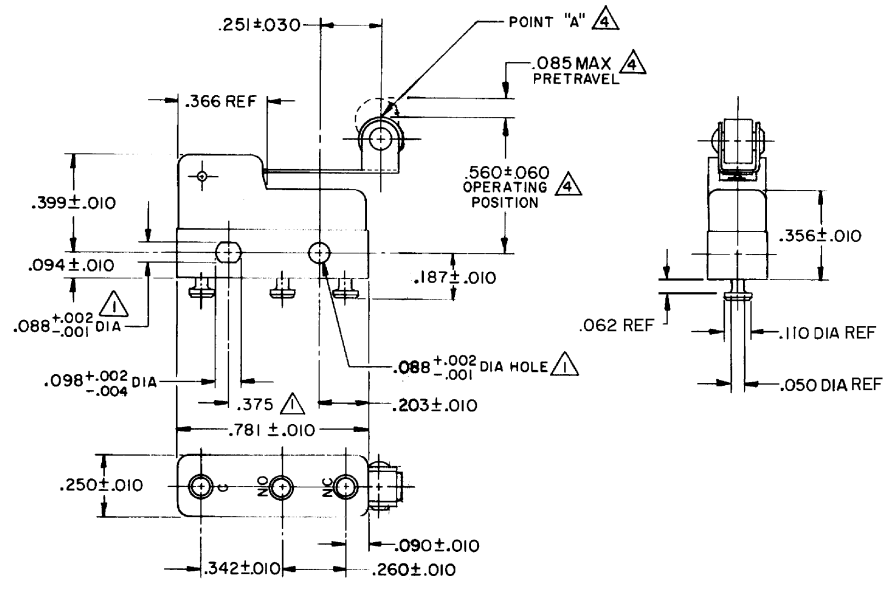
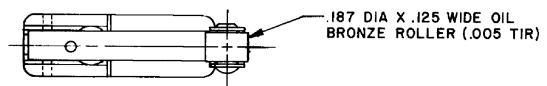


FO-55111-A

HONEYWELL
PART NUMBER
311SM68-T
PRODUCT CODE
TZA2639

REV	DOCUMENT	CHANGED BY	CHECK
7	0038114	KVS 03JUN08	ASD



NOTE -
 ▲ MOUNTING HOLES WILL ACCEPT PINS OR SCREWS OF .087 MAX DIA ON .375±.002 CENTERS
 2- SWITCH WILL WITHSTAND TEMPERATURE OF 250°F
 3- MATING CONTACT SURFACES ARE 24K SOLID GOLD OVERLAY
 ▲ CHARACTERISTICS TAKEN AT POINT "A"

RELEASE NO. PR - 4536
 REPLACES -

CHARACTERISTICS	4
OPERATING FORCE	40 GRAM MAX
RELEASE FORCE	7 GRAM MIN
DIFFERENTIAL TRAVEL	.019 MAX
OVERTRAVEL	.018 MIN

ELECTRICAL DATA	
CONTACT ARRANGEMENT S P D T	
30 VOLTS DC RATING	
SEA LEVEL	50,000 FT
INDUCTIVE	1/2 AMP 1/2 AMP
RESISTIVE	1 AMP 1 AMP
MAXIMUM INRUSH 2 AMP	
KEMA, CE	1A, 250V ~ T85 1E4
UL, CSA	1A, 125 VAC

DESIGN UNITS: INCH	
TOLERANCES UNLESS NOTED:	
NO PLACE	X ± 0.030
ONE PLACE	.X ± 0.015
TWO PLACE	.XX ± 0.005
THREE PLACE	.XXX ±
FOUR PLACE	.XXXX ±
ANGLES	±
THIRD ANGLE PROJECTION	

DRAWN	VK	07 NOV 07
CHECK	RJ	07 NOV 07
THIS DRAWING COVERS A PROPRIETARY ITEM AND IS THE PROPERTY OF HONEYWELL. THIS DRAWING IS NOT TO BE COPIED OR USED WITHOUT THE PERMISSION OF HONEYWELL.		
INTERPRET PER ANSI Y14.5M-1982 OTHER HONEYWELL ENGINEERING STANDARDS MAY APPLY		
RASTER		

Honeywell			
TITLE SWITCH - BASIC			
SIZE	TYPE	DRAWING NAME	REV
B	I	311SM68-T	7
SCALE	-	WEIGHT .006 LB MAX	SHEET 1 OF 1

4

3

2

1