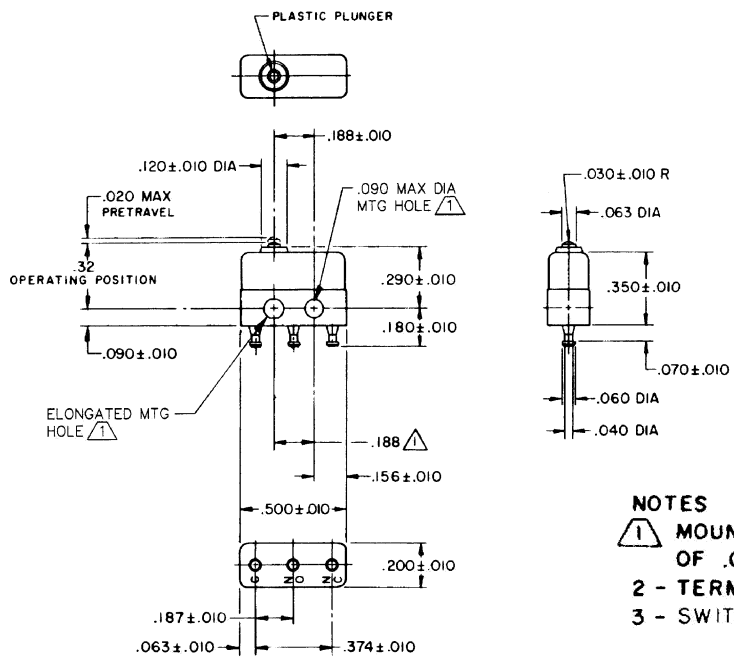


FO-55111-A
 HONEYWELL
 PART NUMBER
 21SX39-T
 PRODUCT CODE
 VDM3900
 JG-NUMBER
 JG-80956 &
 JG-80956J
 MILITARY PART NUMBER
 24547-1

REV	DOCUMENT	CHANGED BY	CHECK
12	0038449	VS 28APR08	BLR



NOTES
 1 MOUNTING HOLES WILL ACCEPT PINS OR SCREWS OF .087 MAX DIA ON .188 ± .002 CENTERS
 2 - TERMINALS ARE PLATED FOR SOLDERING
 3 - SWITCH WILL WITHSTAND TEMPERATURE OF 185° F

RELEASE NO. SR 12676
 REPLACES

CHARACTERISTICS
OPERATING FORCE - - - 5 OZ MAX
RELEASE FORCE - - - 1 OZ MIN
DIFFERENTIAL TRAVEL - - - .005 MAX
OVERTRAVEL - - - .004 MIN

ELECTRICAL DATA	
CONTACT ARRANGEMENT S P D T	
28 VOLTS DC RATING	115 VOLTS AC, 60 CPS
SEA LEVEL	50,000 FT
INDUCTIVE	4 AMP 2.5 AMP 7 AMP
RESISTIVE	7 AMP 4 AMP 7 AMP
LAMP	2.5 AMP 2.5 AMP 2 AMP
APPROVALS	KEMA CE 7A 250 V - T125 5E4 UL CSA 7A 250 VAC

DESIGN UNITS: INCH
TOLERANCES UNLESS NOTED:
NO PLACE .X ±
ONE PLACE .X ±
TWO PLACE .XX ±
THREE PLACE .XXX ±
FOUR PLACE .XXXX ±
ANGLES ±
THIRD ANGLE PROJECTION

DRAWN	SPK	20FEB08
CHECK	RJ	20FEB08
THIS DRAWING COVERS A PROPRIETARY ITEM AND IS THE PROPERTY OF HONEYWELL. THIS DRAWING IS NOT TO BE COPIED OR USED WITHOUT THE PERMISSION OF HONEYWELL.		
INTERPRET PER ANSI Y14.5M-1982 OTHER HONEYWELL ENGINEERING STANDARDS MAY APPLY		
RASTER		

Honeywell			
TITLE SWITCH - BASIC			
SIZE	TYPE	DRAWING NAME	REV
B	I	21SX39-T	12
SCALE	-	WEIGHT:.003 LB MAX	SHEET 1 OF 1

4

3

2

1