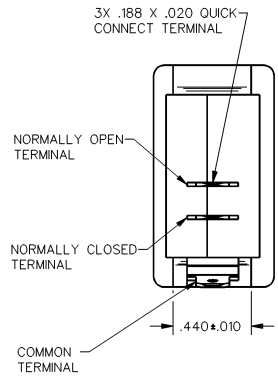
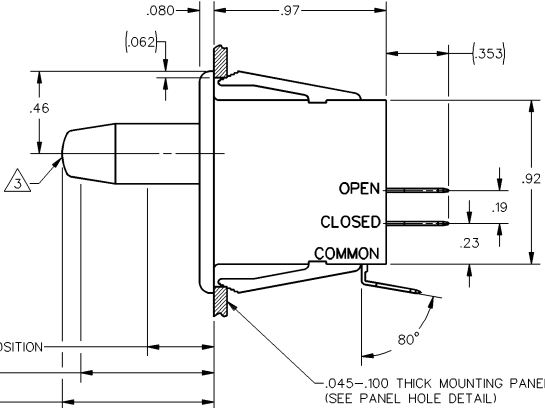
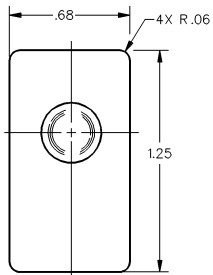
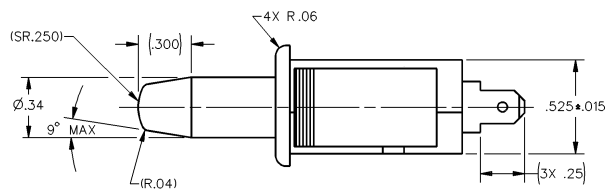
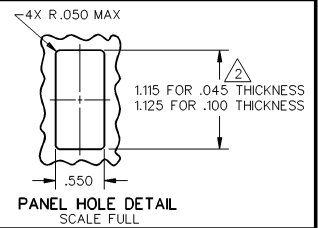


**MICRO SWITCH**  
a Honeywell Division  
FED. MFG. CODE 91929

SWITCH - BASIC

CATALOG LISTING  
**1DM57**



.375 MAX FULL OVERTRAVEL POSITION  
.750±.060 OPERATING POSITION  
.880±.050 FREE POSITION

THIS DRAWING COVERS A PROPRIETARY ITEM AND IS THE PROPERTY OF MICRO SWITCH, A DIVISION OF HONEYWELL. THIS DRAWING IS NOT TO BE COPIED OR USED WITHOUT THE APPROVAL OF MICRO SWITCH.

THIRD ANGLE PROJECTION  
SCALE 2 TO 1  
DO NOT SCALE PRINT

CHARACTERISTICS	
OPERATING FORCE	15 OZ MAX
RELEASE FORCE	3 OZ MIN
DIFFERENTIAL TRAVEL	.045 APPROX
OVERTRAVEL	.375 MIN
PLUNGER FORCE	21 OZ MAX (AT .375 OVERTRAVEL)

ELECTRICAL DATA	
CONTACT ARRANGEMENT S P D T	
L181	
10A 1/2HP 125, 250 OR 277 VAC	

TOLERANCES ARE	
ONE PLACE	(.01) ±.030
TWO PLACE	(.00) ±.015
THREE PLACE	(.000) ±.005
ANGLES	± 5°

- NOTES  
 1 - BLACK PLASTIC CASE AND PLUNGER  
 2 - NOMINAL CUTOUT DIMENSION FOR PANELS BETWEEN .045 AND .100 SHOULD BE INTERPOLATED BETWEEN 1.115 AND 1.125  
 3 - PUSH TO OPERATE-MOMENTARY

ANSI Y14.5M-1982 APPLIES

CATALOG LISTING 1DM57  
 ISSUE 8  
 REVISIONS  
 A1 10/28/82  
 WUC 15 OCT 92  
 DDN/CAD  
 WUC 15 OCT 92  
 DDN/CAD

