

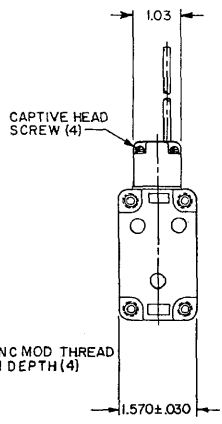
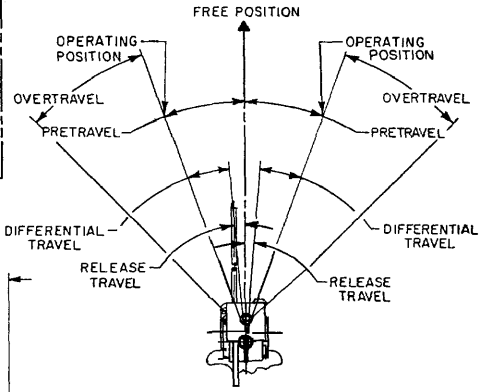
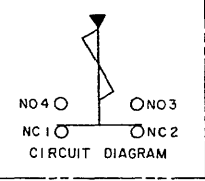
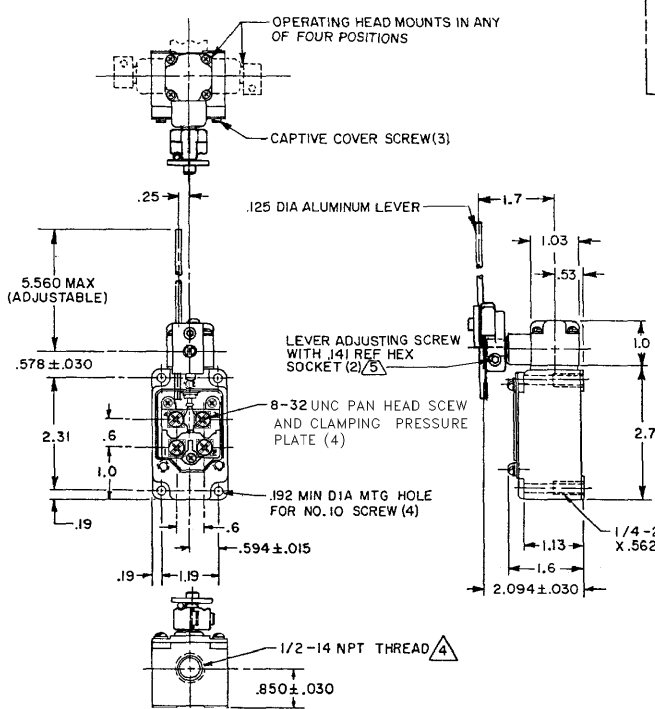
CATALOG LISTING 1LS10-L
 ISSUE 15
 REVISIONS
 A CO-78507
 14 MAR 95
 DRAWN GJW
 14 APR 95
 CHECK JAF
 5 MAY 95
 FORMTEK

MICRO SWITCH
a Honeywell Division

SWITCH-ENCLOSED

CATALOG LISTING
1LS10-L

FED. MFG. CODE 81929



THIS DRAWING COVERS A PROPRIETARY ITEM AND IS THE PROPERTY OF MICRO SWITCH, A DIVISION OF HONEYWELL. THIS DRAWING IS NOT TO BE COPIED OR USED WITHOUT THE APPROVAL OF MICRO SWITCH.		THIRD ANGLE PROJECTION
CHARACTERISTICS OPERATING TORQUE----- 1.7 IN-LB MAX FULL OVERTRAVEL TORQUE----- 2.4 IN-LB MAX RELEASE TORQUE----- .35 IN-LB MIN PRETRAVEL----- 20° MAX DIFFERENTIAL TRAVEL----- 12° MAX OVERTRAVEL----- 30° MIN RELEASE TRAVEL----- 5° MIN BASIC SWITCH REPLACEMENT----- 2MMI-L	ELECTRICAL DATA CONTACT ARRANGEMENT (SEE CIRCUIT DIAGRAM) L126 10A 125, 250 OR 480 VAC 1/3HP 125 VAC, 3/4HP 250 VAC 0.8A 125 VDC, 0.4A 250 VDC	SCALE 1/2 TO 1 DO NOT SCALE PRINT UNLESS OTHERWISE SPECIFIED TOLERANCES ARE ONE PLACE (.01) ±.030 TWO PLACE (.00) ±.015 THREE PLACE (.000) ±.005 ANGLES ± WEIGHT

- NOTES
- SWITCH IS ASSEMBLED FOR ACTUATION IN BOTH DIRECTIONS BUT MAY BE ADJUSTED TO ACTUATE IN EITHER THE CLOCKWISE DIRECTION ONLY OR THE COUNTERCLOCKWISE DIRECTION ONLY
 - TO CONVERT SWITCH FOR ACTUATION IN EITHER THE CLOCKWISE OR COUNTERCLOCKWISE DIRECTION ONLY, REMOVE ACTUATOR HEAD AND ROTATE THE NOTCHED PLUNGER 90° TO THE RIGHT FOR CLOCKWISE ACTUATION OR 90° TO THE LEFT FOR COUNTERCLOCKWISE ACTUATION
- SEAL TO BE FURNISHED BY USER
 ROLLER LEVER MAY BE LOCKED IN ANY POSITION THRU 360°
 LEVER FURNISHED UNASSEMBLED IN UNIT PACKING BOX