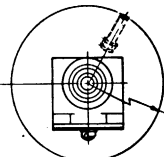


FORMTEK
 FD-502P-001
 DRAWN
 R R 125 OCT 81
 CHECKED
 CCH
 REVISIONS
 A 20 MAR 74
 B 00 23 40
 C 00 25 19
 D 00 27 00
 E 00 38 80
 F 00 42 82
 G 00 00 00
 H 00 00 00
 I 00 00 00
 J 00 00 00
 K 00 00 00
 L 00 00 00
 M 00 00 00
 N 00 00 00
 O 00 00 00
 P 00 00 00
 Q 00 00 00
 R 00 00 00
 S 00 00 00
 T 00 00 00
 U 00 00 00
 V 00 00 00
 W 00 00 00
 X 00 00 00
 Y 00 00 00
 Z 00 00 00
 ISSUE
 DRAWING NUMBER
 8LS3
 PAGE 1 OF 1
 RELEASE NO. BR 9394
 REPLACES
 BR 9394

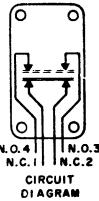
MICRO SWITCH
 A DIVISION OF MINNEAPOLIS ELECTRIC REGULATOR COMPANY
 FEDERAL MFR. CODE 91929

SWITCH-ENCLOSED

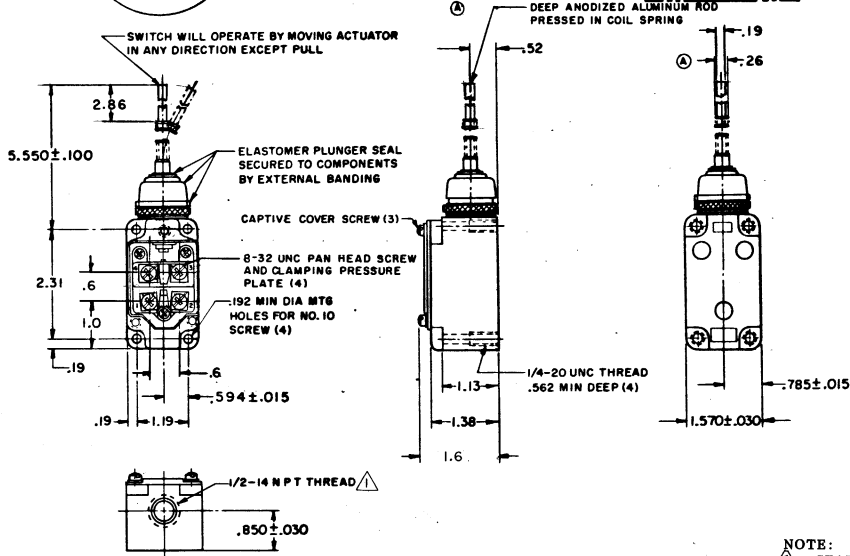
CATALOG LISTING
8LS3



1.125 MAX OPERATING POSITION



N.O.1 N.O.2
 N.C.1 N.C.2
 CIRCUIT
 DIAGRAM



NOTE:
 SEAL TO BE PROVIDED BY USER

THIS DRAWING COVERS A PROPRIETARY ITEM AND IS THE PROPERTY OF MICRO SWITCH, A DIVISION OF MINNEAPOLIS ELECTRIC REGULATOR CO. THIS DRAWING IS NOT TO BE COPIED OR USED WITHOUT THE APPROVAL OF MICRO SWITCH.

CHARACTERISTICS	ELECTRICAL DATA	SCALE 1/2 TO 1
OPERATING POSITION --- 1.125 MAX IN ANY DIRECTION	CONTACT ARRANGEMENT (SEE CIRCUIT DIAGRAM)	DO NOT SCALE PRINT
OPERATING FORCE --- 5 OZ MAX	10A-120, 240 OR 480 VAC 1/3 HP- 120 VAC; 3/4 HP - 240 VAC 0.8A-115 VDC; 0.4A-230 VDC; 0.1A-550 VDC PILOT DUTY 600 VAC MAX	UNLESS OTHERWISE SPECIFIED DIMENSIONS ARE IN INCHES
FORCE AT 2.0 --- 10 OZ MAX		TOLERANCES ARE:
SWITCH-BASIC REPLACEMENT --- 2MNI		ONE PLACE (.01) 2.000 TWO PLACE (.001) 2.000 THREE PLACE (.000) 2.000 ANGLE 2
		WEIGHT