

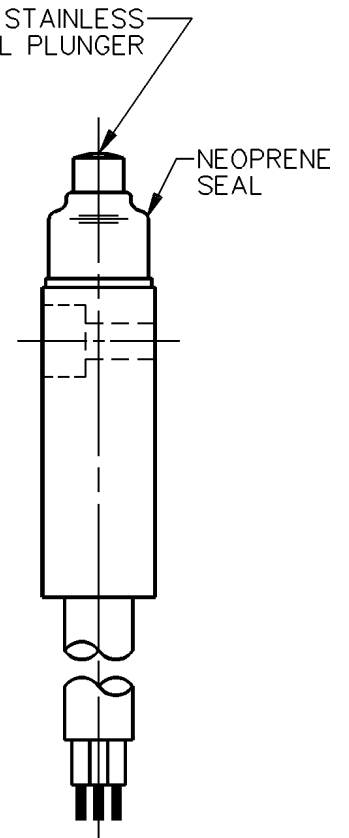
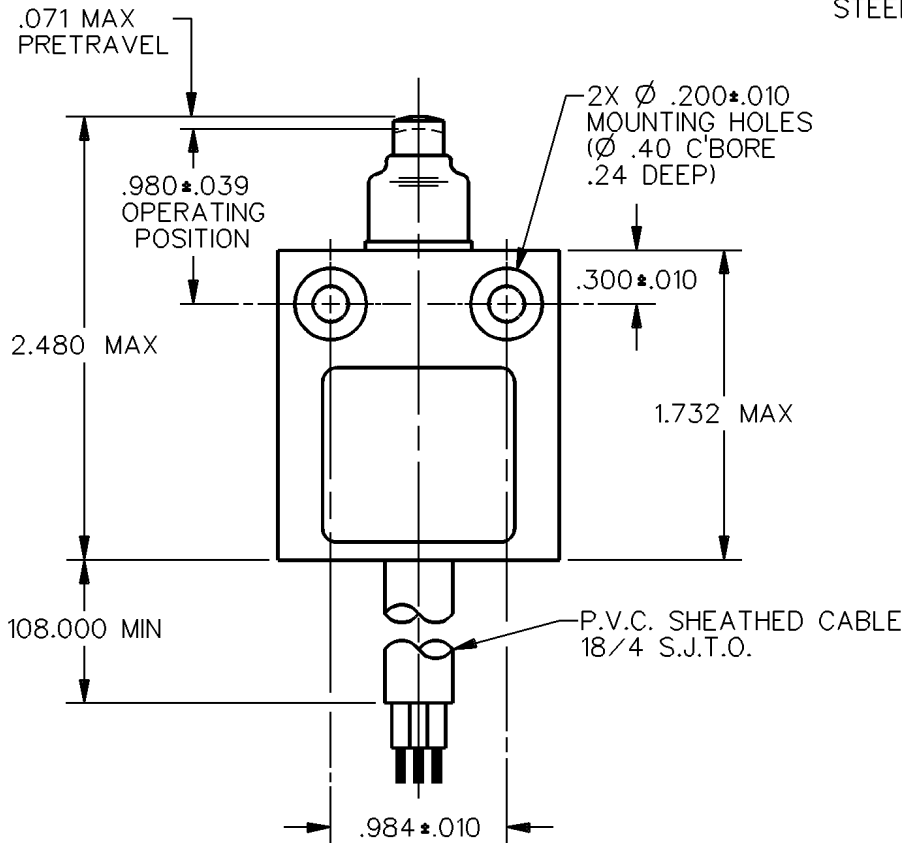
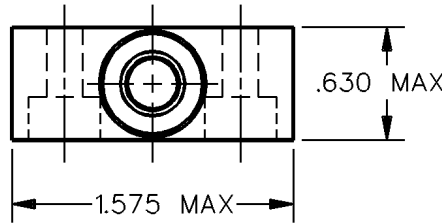
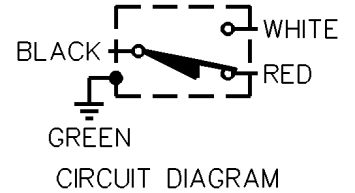
MICRO SWITCH
a Honeywell Division

FED. MFG. CODE 91929

MINIATURE PRECISION
LIMIT SWITCH

CATALOG LISTING

914CE18-9

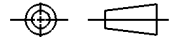




NOTES
1 - ZINC HOUSING FINISHED WITH GRAY PAINT

ANSI Y14.5M-1982 APPLIES

THIS DRAWING COVERS A PROPRIETARY ITEM AND IS THE PROPERTY OF MICRO SWITCH, A DIVISION OF HONEYWELL. THIS DRAWING IS NOT TO BE COPIED OR USED WITHOUT THE APPROVAL OF MICRO SWITCH.

THIRD ANGLE PROJECTION



CHARACTERISTICS	ELECTRICAL DATA	SCALE FULL	DO NOT SCALE PRINT
OPERATING FORCE — — — — 5 LB MAX	CONTACT ARRANGEMENT S P D T	UNLESS OTHERWISE SPECIFIED TOLERANCES ARE	
DIFFERENTIAL TRAVEL — — — .004 MAX	5A - 250 VAC 1/10HP - 125 OR 250 VAC	ONE PLACE (.0)	±.030
OVERTRAVEL — — — — .118 MIN		TWO PLACE (.00)	±.015
	 	THREE PLACE (.000)	±.005
		ANGLES	±
		WEIGHT	

914CE18-9
 M
 DRAWING NUMBER
 3
 ISSUE
 REVISIONS
 A CO 69061
 S A V
 4 OCT 91
 CHECK
 CHECK
 DDM/CAD
 DRAWN
 S A V 4 OCT 91
 CHECK
 RELEASE NO. PR-7324
 REPLACES