

SIDE ROTARY

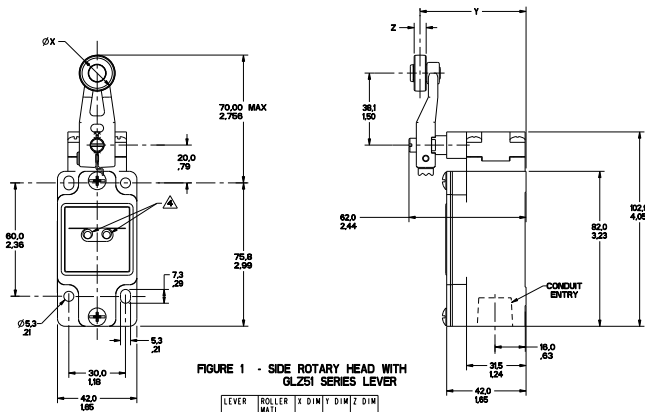


FIGURE 1 - SIDE ROTARY HEAD WITH GL251 SERIES LEVER

LEVER	ROLLER MATL	X DIM	Y DIM	Z DIM
GL251A	NYLON	18.1 .75	55.9 2.20	6.4 .25
GL251B	STEEL	18.1 .75	55.9 2.20	6.4 .25
GL251F	RUBBER	50.0 1.97	58.6 2.31	10.0 .39
GL251T	STAINLESS STEEL	19.1 .75	58.6 2.24	8.8 .345

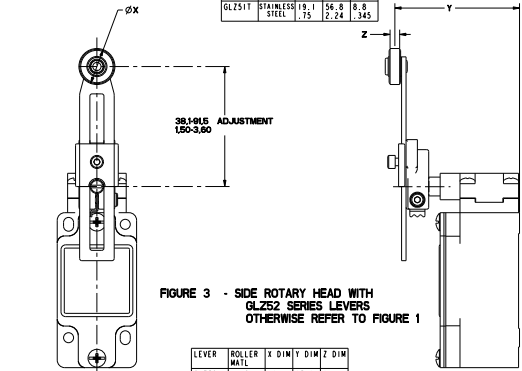


FIGURE 3 - SIDE ROTARY HEAD WITH GL252 SERIES LEVERS OTHERWISE REFER TO FIGURE 1

LEVER	ROLLER MATL	X DIM	Y DIM	Z DIM
GL252A	NYLON	19.1 .75	65.9 2.59	6.4 .25
GL252B	STEEL	19.1 .75	65.9 2.59	6.4 .25
GL252D	NYLON	38.1 1.5	65.9 2.59	6.4 .25
GL252E	NYLON	19.1 .75	39.2 1.55	33.3 1.30
GL252W	RUBBER	40.0 1.6	71.5 2.81	12.7 .5
GL252Y	RUBBER	50.0 1.97	68.6 2.71	10.0 .39

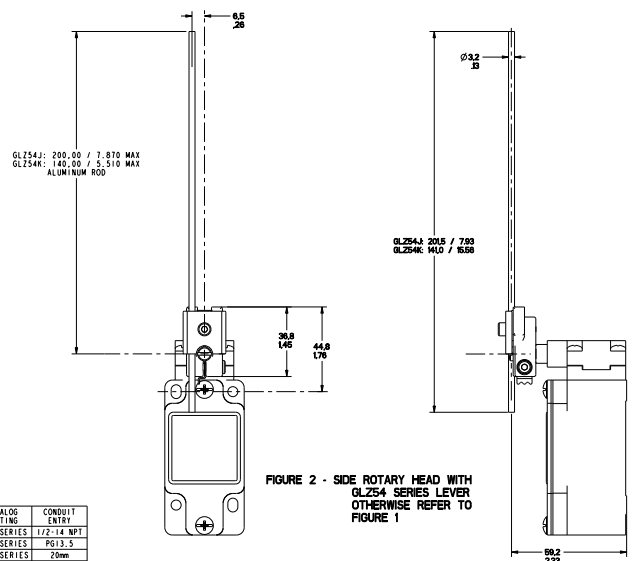


FIGURE 2 - SIDE ROTARY HEAD WITH GL254 SERIES LEVER OTHERWISE REFER TO FIGURE 1

FIGURE	CATALOG LISTING	CONDUIT ENTRY
1A	GL+A SERIES	1/2-14 NPT
1B	GL+B SERIES	PG13.5
1C	GL+C SERIES	20mm
1D	GL+D SERIES	PF1/2

ELECTRICAL RATING			
AC		DC	
A600 Ue	AC15 Ie	O300 Ue	DC13 Ie
120 VOLTS	10 AMP(S)	24 VOLTS	2.8 AMP(S)
240	5	250	.27
380	1.9	250	.27
480	1.5		
500	1.4		
600	1.2		

ENVIRONMENTAL RATING	
IP67	
NEMA/UL TYPES	1, 4, 12, 13

- NOTES
- HEADS MAY BE INDEXED IN 90° INCREMENTS.
 - LEVERS MAY BE REVEYED TO THE SHAFT AT 90° INCREMENTS, THEY MAY ALSO BE ATTACHED, BUT NOT KEYS ANYWHERE ON THE SHAFT.
 - FOR ADDITIONAL LEVERS SEE "M" DRAWING CHART GL25
- ⚠ THE LEFT INDICATOR IS GREEN AND INDICATES "POWER ON" IT IS ON GLH SERIES PRODUCTS ONLY. THE RIGHT INDICATOR IS YELLOW AND INDICATES "OUTPUT STATUS" IT IS ON GLF AND GLH SERIES PRODUCTS ONLY.
- ⚠ THE MAXIMUM VOLTAGE, V_e OF GLF AND GLH SERIES PRODUCTS IS THE MAXIMUM RATED VOLTAGE OF INDICATION LIGHTS FREE POSITION, OPERATE POINT, OVERTRAVEL AND PRETRAVEL ALL TO EXCESSIVE!
- ⚠ CAM TRAVEL FOR FIG 9 ONLY APPLIES WHEN LEVER IS ADJUSTED TO 36.1 / 1.42
- ⚠ THE MAXIMUM VOLTAGE, V_e OF "06" AND "36" BASIC SWITCH CODE IS 500V (A500) TEMPERATURE RANGE
- ⚠ (ALL PRODUCTS EXCEPT w/SIDE ROTARY OPERATING HEAD) OPERATING: -25°C TO +85°C / -15°F TO +185°F STORAGE: -40°C TO +85°C / -40°F TO +185°F (PRODUCTS w/SIDE ROTARY OPERATING HEAD) OPERATING: -40°C TO +85°C / -40°F TO +185°F STORAGE: -40°C TO +85°C / -40°F TO +185°F

CATALOG LISTING	BODY DIMENSIONS, FIGURE	HEAD DIMENSIONS, FIGURE	HEAD ACTUATION, FIGURE
GLA***	I	N/A	N/A
GLB***	I	N/A	N/A
GLC***	IA	N/A	N/A
GLD***	IB	N/A	N/A
GLE***	IC	N/A	N/A
GLF***	ID	N/A	N/A
GLH***A1	I	1	9
GLH***A2	I	3	9
GLH***A4	I	2	10
GLH***A5	I		8
GLH***B	I	4	11
GLH***C	I	5	13A, 13B
GLH***D	I	6	14A, 14B
GLH***E1A	I	3A	12
GLH***E7B	I	7	12
GLH***E7C	I	7E	15
GLH***E7D	I	7B	12
GLH***K8B	I	7C	15
GLH***K8C	I	7D	15
GLH***K8C	I	7	15

THIS DRAWING COVERS A PROPRIETARY ITEM AND IS THE PROPERTY OF MICRO SWITCH, A DIVISION OF HONEYWELL. THIS DRAWING IS NOT TO BE COPIED OR USED WITHOUT THE APPROVAL OF MICRO SWITCH.

THIS DRAWING IS NOT TO BE COPIED OR USED WITHOUT THE APPROVAL OF MICRO SWITCH.

MICRO SWITCH Honeywell Division SWITCH, ENCLOSED GL SERIES CHART 1

ANSI Y14.5M-1982 APPLIES

THIRD ANGLE PROJECTION

SCALE 1:1

DO NOT SCALE PRINT

TOLERANCES UNLESS OTHERWISE SPECIFIED

FINISH UNLESS OTHERWISE SPECIFIED

UNIT: MILLIMETERS

WEIGHT

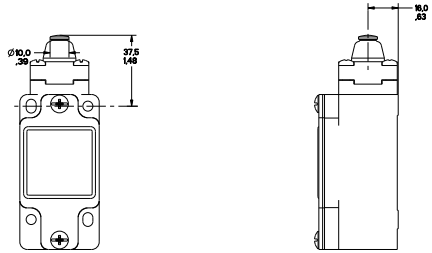


FIGURE 4 - TOP PIN PLUNGER HEAD
OTHERWISE REFER TO
FIGURE 1

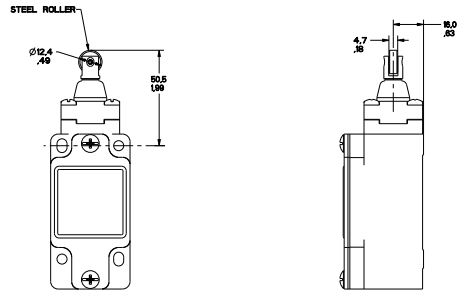


FIGURE 5 - TOP ROLLER PLUNGER HEAD
OTHERWISE REFER TO
FIGURE 1

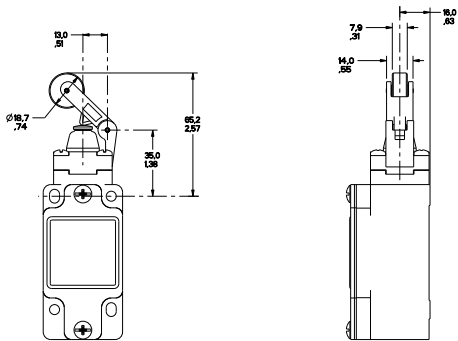


FIGURE 6 - TOP LEVER HEAD,
OTHERWISE REFER TO
FIGURE 1

PTC/CAD
 MICRO SWITCH
 GL SERIES CHART 1
 PART NO. 127-1031
 REV. 11-82

THIS DRAWING COVERS A PROPRIETARY ITEM AND IS THE PROPERTY OF MICRO SWITCH, A DIVISION OF HONEYWELL. THIS DRAWING IS NOT TO BE COPIED OR USED WITHOUT THE APPROVAL OF MICRO SWITCH.		TOLERANCES UNLESS OTHERWISE SPECIFIED	
1/16"	1/32"	1/64"	1/128"
1/8"	3/16"	1/4"	3/8"
1/2"	3/4"	1"	2"
3"	6"	12"	24"
WEIGHTS		MATERIALS	
MICRO SWITCH		GL SERIES CHART 1	
HONEYWELL DIVISION		SWITCH, ENCLOSED	
ANSI Y14.5M-1982 APPLIES			

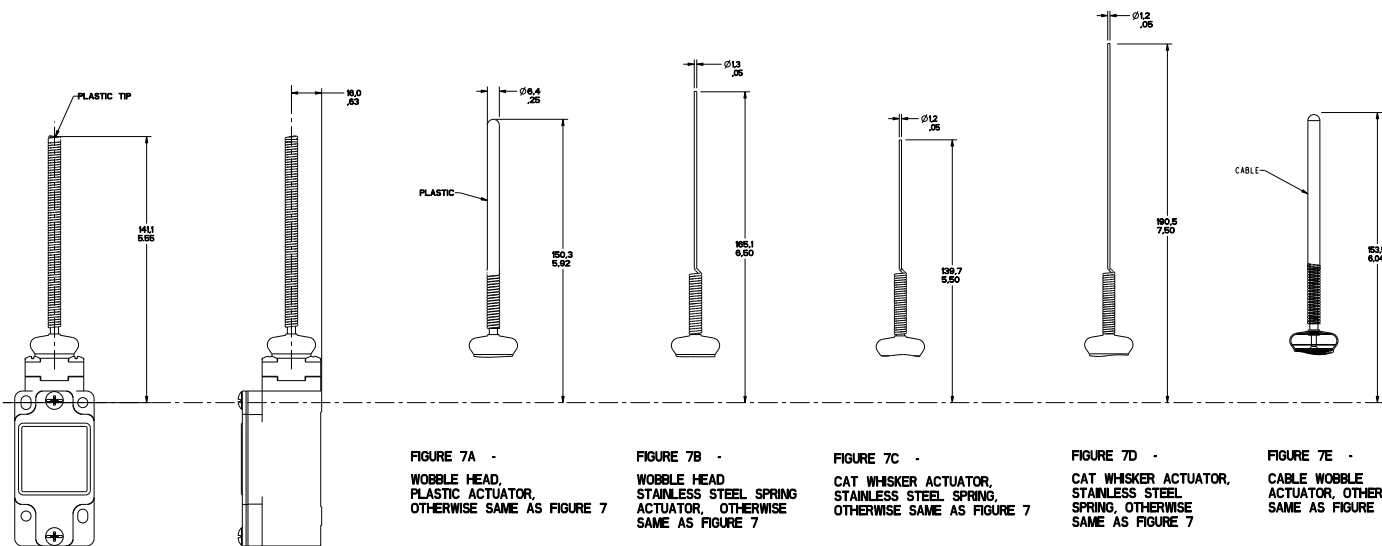


FIGURE 7A -
WOBBLE HEAD,
PLASTIC ACTUATOR,
OTHERWISE SAME AS FIGURE 7

FIGURE 7B -
WOBBLE HEAD
STAINLESS STEEL SPRING
ACTUATOR, OTHERWISE
SAME AS FIGURE 7

FIGURE 7C -
CAT WHISKER ACTUATOR,
STAINLESS STEEL SPRING,
OTHERWISE SAME AS FIGURE 7

FIGURE 7D -
CAT WHISKER ACTUATOR,
STAINLESS STEEL
SPRING, OTHERWISE
SAME AS FIGURE 7

FIGURE 7E -
CABLE WOBBLE
ACTUATOR, OTHERWISE
SAME AS FIGURE 7

FIGURE 7 - WOBBLE HEAD, AND CAT WISKER HEAD
COIL ACTUATOR,
OTHERWISE REFER TO
FIGURE 1

PTC/CAD
 MICRO SWITCH
 HONEYWELL DIVISION
 15000 SHILOH ROAD
 MARIETTA, GA 30067
 (404) 875-3100
 FAX (404) 875-3101
 TELETYPE (404) 875-3102
 CIRCLE 10 ON READER SERVICE CARD

THIS DRAWING COVERS A PROPRIETARY ITEM AND IS THE PROPERTY OF MICRO SWITCH, A DIVISION OF HONEYWELL. THIS DRAWING IS NOT TO BE COPIED OR USED WITHOUT THE APPROVAL OF MICRO SWITCH. TYPED COPY ONLY MICRO SWITCH Honeywell Division		SWITCH, ENCLOSED	GL SERIES CHART 1
ANSI Y14.5M-1982 APPLIES		THIRD ANGLE PROJECTION SCALE: 1:1 DO NOT SCALE PRINT TOLERANCES UNLESS SPECIFIED: DIMENSIONS IN PARENTHESES ARE FOR REFERENCE ONLY UNLESS OTHERWISE SPECIFIED BY: FINISH: AS SHOWN MATERIAL: AS SHOWN WEIGHT:	CHECKED: [] DESIGNED: [] DRAWN: [] IN CHARGE: [] DATE: []

FIGURES 8, 9, 10 SIDE ROTARY HEAD, ANGULAR ACTUATION

CATALOG LISTING	CONTACT BLOCK DIAGRAM	NOMINAL TRAVELS AND RELATED TERMINALS <small>▒ CONTACT CLOSED, ▭ CONTACT OPEN, ▧ CONTACT CLOSED DIFFERENTIAL TRAVEL, ** POSITIVE OPENING TO IEC 947-5-1</small>	MAXIMUM OPERATING FORCE N LB-TN	MAXIMUM DISCONNECT FORCE N LB-TN	MAX OPERATE DEGREE/S	MIN OPERATE DEGREE/S	MAX OPERATE FREQUENCY OPS/MIN
GL**01A GL**07A	SNAP - ACTION CONTACTS SINGLE POLE	26° 55+* 85° 12" DIFFERENTIAL TRAVEL	330 2.9	385 3.4	1290	13	250
GL**03A GL**33A	SLOW ACTING BREAK BEFORE MAKE	26+* 85° 38"	330 2.9	385 3.4	1290	13	250
GL**04A GL**34A	SLOW ACTING MAKE BEFORE BREAK	38+* 85° 26°	330 2.9	400 3.5	1290	13	250
GL**05A GL**35A	SLOW ACTING	38° 85° 13-14, 23-24	330 2.9	385 3.4	1290	13	250
GL**06A GL**36A	SLOW ACTING	26+* 85° 11-12, 21-22	330 2.9	385 3.4	1290	13	250
GL**20A GL**22A GL**24A GL**32A	SNAP ACTION CONTACTS DOUBLE POLE	26° 55+* 85° 12" DIFFERENTIAL TRAVEL	330 2.9	385 3.4	1290	13	250
GL**21A GL**25A GL**28A GL**31A	SNAP ACTION CONTACTS DOUBLE POLE SEQUENTIAL	27 42 8 DIFFERENTIAL TRAVEL	330 2.9	N/A	1290	13	250

SIDE ROTARY HEAD, CAM ACTUATION PER EN50041, FIGURES 8 AND 9

CATALOG LISTING	CONTACT BLOCK DIAGRAM	NOMINAL TRAVELS AND RELATED TERMINALS <small>▒ CONTACT CLOSED, ▭ CONTACT OPEN, ▧ CONTACT CLOSED DIFFERENTIAL TRAVEL, ** POSITIVE OPENING TO IEC 947-5-1 DIMENSIONS IN mm</small>	MAXIMUM OPERATING FORCE N LB	MAXIMUM DISCONNECT FORCE N LB	MAX OPERATE VEL. M/S	MIN OPERATE VEL. M/S	MAX OPERATE FREQUENCY OPS/MIN
GL**01A GL**07A	SNAP - ACTION CONTACTS SINGLE POLE	20 56+* 12 DIFFERENTIAL TRAVEL	9.7 2.2	11.4 2.6	.85 33.5	8.5 .33	250
GL**03A GL**33A	SLOW ACTING BREAK BEFORE MAKE	20+* 32	9.7 2.2	11.4 2.6	.85 33.5	8.5 .33	250
GL**04A GL**34A	SLOW ACTING MAKE BEFORE BREAK	32 20	9.7 2.2	11.4 2.6	.85 33.5	8.5 .33	250
GL**05A GL**35A	SLOW ACTING	32° 85° 13-14, 23-24	9.7 2.2	11.4 2.6	.85 33.5	8.5 .33	250
GL**06A GL**36A	SLOW ACTING	20+* 11-12, 21-22	9.7 2.2	11.4 2.6	.85 33.5	8.5 .33	250
GL**20A GL**22A GL**24A GL**32A	SNAP ACTION CONTACTS DOUBLE POLE	20 56+* 12 DIFFERENTIAL TRAVEL	9.7 2.2	11.4 2.7	.85 33.5	8.5 .33	250
GL**21A GL**25A GL**28A GL**31A	SNAP ACTION CONTACTS DOUBLE POLE SEQUENTIAL	20 38.5 8.5 DIFFERENTIAL TRAVEL	9.7 2.2	N/A	.85 33.5	8.5 .33	250
GL**26J GL**27J GL**29J GL**30J	SNAP ACTION CONTACTS DOUBLE POLE CENTER NEUTRAL	16 8 DIFFERENTIAL TRAVEL	9.7 2.2	N/A	.85 33.5	8.5 .33	250

GL SERIES CHART 1
 HONEYWELL MICRO SWITCH DIVISION
 3500 WILSON BLVD
 AUBURN, MA 01501-1500
 TEL: 508-535-3100
 FAX: 508-535-3101
 WWW.HONEYWELL.COM

THIRD ANGLE PROJECTION
 SCALE
 DO NOT SCALE PRINT
 TOLERANCES
 UNLESS OTHERWISE SPECIFIED
 DIMENSIONS ARE IN MILLIMETERS
 DECIMALS
 FRACTIONS
 UNLESS OTHERWISE SPECIFIED
 THIS DRAWING IS NOT TO BE COPIED OR USED WITHOUT THE APPROVAL OF MICRO SWITCH.
 MICRO SWITCH Honeywell Division SWITCH, ENCLOSED GL SERIES CHART 1
 DATE
 WEIGHT

ANSI Y14.5M-1982 APPLICABLE

FIGURES 11, PIN PLUNGER HEAD, LINEAR ACTUATION

CATALOG LISTING	CONTACT BLOCK DIAGRAM	NOMINAL TRAVELS AND RELATED TERMINALS CONTACT CLOSED, CONTACT OPEN, CONTACT CLOSED DIFFERENTIAL TRAVEL, ** POSITIVE OPENING TO IEC 947-5-1	MAXIMUM OPERATING FORCE - N LB	MAXIMUM DISCONNECT FORCE - N LB	MAX OPERATE VEL - M/S IN/S	MIN OPERATE VEL - M/S IN/S	MAX OPERATE FREQUENCY - OPS/MIN
GL**01B GL**07B	SNAP - ACTION CONTACTS SINGLE POLE	37.5 35 33** 30.5 21-22 13-14 0.9 DIFFERENTIAL TRAVEL	16 3.6	27 6.0	0.1 3.9	1.0 .04	250
GL**03B GL**33B	SLOW ACTING BREAK BEFORE MAKE	37.5 35** 30.5 21-22 13-14 34	16 3.6	27 6.0	0.1 3.9	1.0 .04	250
GL**04B GL**34B	SLOW ACTING MAKE BEFORE BREAK	37.5 34** 30.5 21-22 13-14 35	16 3.6	27 6.0	0.1 3.9	1.0 .04	250
GL**05B GL**35B	SLOW ACTING	37.5 34 30.5 13-14 23-24	16 3.6	27 6.0	0.1 3.9	1.0 .04	250
GL**06B GL**36B	SLOW ACTING	37.5 35** 30.5 11-12 21-22 34	16 3.6	27 6.0	0.1 3.9	1.0 .04	250
GL**20B GL**22B GL**24B GL**32B	SNAP ACTION CONTACTS DOUBLE POLE	37.5 35 33** 30.5 11-12, 21-22 13-14, 23-24 0.9 DIFFERENTIAL TRAVEL	16 3.6	37 8.2	0.1 3.9	1.0 .04	250
GL**21B GL**25B GL**28B GL**31B	STEP 1 STEP 2 SNAP ACTION CONTACTS DOUBLE POLE SEQUENTIAL	37.5 35 33.8 30.5 11-12 13-14 21-22 23-24 .8 DIFFERENTIAL TRAVEL	16 3.6	N/A	0.1 3.9	1.0 .04	250

FIGURE 12, WOBBLE HEAD, ANGULAR ACTUATION

CATALOG LISTING	CONTACT BLOCK DIAGRAM	NOMINAL TRAVELS AND RELATED TERMINALS CONTACT CLOSED, CONTACT OPEN, CONTACT CLOSED DIFFERENTIAL TRAVEL, ** POSITIVE OPENING TO IEC 947-5-1	MAXIMUM OPERATING FORCE - N LB	MAXIMUM DISCONNECT FORCE - N LB	MAX OPERATE VEL - M/S IN/S	MIN OPERATE VEL - M/S IN/S	MAX OPERATE FREQUENCY - OPS/MIN
GL**01E GL**07E	SNAP - ACTION CONTACTS SINGLE POLE	18" 21-22 13-14 0" DIFFERENTIAL TRAVEL	0.2 1.8	N/A	360	8	100
GL**03E GL**33E	SLOW ACTING BREAK BEFORE MAKE	0" 18" 25" 35" 21-22 13-14	0.2 1.8	N/A	360	8	100
GL**04E GL**34E	SLOW ACTING MAKE BEFORE BREAK	0" 18" 25" 35" 21-22 13-14	0.2 1.8	N/A	360	8	100
GL**05E GL**35E	SLOW ACTING	0" 25" 35" 13-14 23-24	0.2 1.8	N/A	360	8	100
GL**06E GL**36E	SLOW ACTING	0" 18" 35" 11-12 21-22	0.2 1.8	N/A	360	8	100
GL**20E GL**22E GL**24E GL**32E	SNAP ACTION CONTACTS DOUBLE POLE	18" 11-12, 21-22 13-14, 23-24 0" DIFFERENTIAL TRAVEL	0.2 1.8	N/A	360	8	100

FIGURE 12, WOBBLE HEAD, SIDE ACTUATION AT 100mm

CATALOG LISTING	CONTACT BLOCK DIAGRAM	NOMINAL TRAVELS AND RELATED TERMINALS CONTACT CLOSED, CONTACT OPEN, CONTACT CLOSED DIFFERENTIAL TRAVEL, ** POSITIVE OPENING TO IEC 947-5-1	MAXIMUM OPERATING FORCE - N LB	MAXIMUM DISCONNECT FORCE - N LB	MAX OPERATE VEL - M/S IN/S	MIN OPERATE VEL - M/S IN/S	MAX OPERATE FREQUENCY - OPS/MIN
GL**01E GL**07E	SNAP - ACTION CONTACTS SINGLE POLE	26 21-22 13-14 12 DIFFERENTIAL TRAVEL	2.5 0.6	N/A	5 19.7	11 .43	100
GL**03E GL**33E	SLOW ACTING BREAK BEFORE MAKE	26.5 38.1 21-22 13-14	2.5 0.6	N/A	5 19.7	11 .43	100
GL**04E GL**34E	SLOW ACTING MAKE BEFORE BREAK	26.5 38.1 21-22 13-14	2.5 0.6	N/A	5 19.7	11 .43	100
GL**05E GL**35E	SLOW ACTING	38.1 13-14 23-24	2.5 0.6	N/A	5 19.7	11 .43	100
GL**06E GL**36E	SLOW ACTING	26.5 11-12 21-22	2.5 0.6	N/A	5 19.7	11 .43	100
GL**20E GL**22E GL**24E GL**32E	SNAP ACTION CONTACTS DOUBLE POLE	26 11-12, 21-22 13-14, 23-24	2.5 0.6	N/A	360	8	100

THIS DRAWING COVERS A PROPRIETARY ITEM AND IS THE PROPERTY OF MICRO SWITCH, A DIVISION OF HONEYWELL. THIS DRAWING IS NOT TO BE COPIED OR USED WITHOUT THE APPROVAL OF MICRO SWITCH.
 MICRO SWITCH Honeywell Division SWITCH, ENCLOSED GL SERIES CHART 1
 ANSI Y14.5M-1982 APPLICABLE

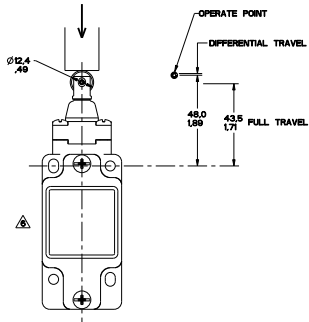


FIGURE 13A

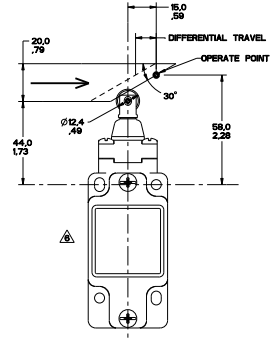


FIGURE 13B

PT/CAD
 MGL SERIES CHART 1
 10/2002
 1/2003
 1/2004
 1/2005
 1/2006
 1/2007
 1/2008
 1/2009
 1/2010
 1/2011
 1/2012
 1/2013
 1/2014
 1/2015
 1/2016
 1/2017
 1/2018
 1/2019
 1/2020
 1/2021
 1/2022
 1/2023
 1/2024
 1/2025
 1/2026
 1/2027
 1/2028
 1/2029
 1/2030

<p>THIS DRAWING COVERS A PROPRIETARY ITEM AND IS THE PROPERTY OF MICRO SWITCH, A DIVISION OF HONEYWELL. THIS DRAWING IS NOT TO BE COPIED OR USED WITHOUT THE APPROVAL OF MICRO SWITCH.</p> <p>SEE THE CASE FILE FOR MICRO SWITCH Honeywell Division</p>		<p>SWITCH, ENCLOSED</p>	<p>GL SERIES CHART 1</p>
<p>ANSI Y14.5M-1982 APPLIES</p>		<p>THIS DRAWING COVERS A PROPRIETARY ITEM AND IS THE PROPERTY OF MICRO SWITCH, A DIVISION OF HONEYWELL. THIS DRAWING IS NOT TO BE COPIED OR USED WITHOUT THE APPROVAL OF MICRO SWITCH.</p> <p>SEE THE CASE FILE FOR MICRO SWITCH Honeywell Division</p>	<p>SCALE 1:1</p> <p>DO NOT SCALE PRINT</p> <p>TOLERANCES UNLESS OTHERWISE SPECIFIED</p> <p>FINISH UNLESS OTHERWISE SPECIFIED</p> <p>DATE 1/2002</p> <p>DESIGNED BY</p> <p>CHECKED BY</p> <p>APPROVED BY</p> <p>WEIGHT</p>

FIGURE 13A, ROLLER PLUNGER HEAD, PIN ACTUATION

CATALOG LISTING	CONTACT BLOCK DIAGRAM	NOMINAL TRAVELS AND RELATED TERMINALS CONTACT CLOSED, CONTACT OPEN, CONTACT CLOSED DIFFERENTIAL TRAVEL, ** POSITIVE OPENING TO IEC 947-5-1	MAXIMUM OPERATING FORCE - LB	MAXIMUM DISCONNECT FORCE - LB	MAX OPERATE VEL - IN/S	MIN OPERATE VEL - IN/S	MAX OPERATE FREQUENCY - OPS/MIN
GL**01C GL**07C	SNAP - ACTION CONTACTS SINGLE POLE	50.5 48 46** 43.5 21-22 13-14 0.9 DIFFERENTIAL TRAVEL	16 3.6	27 6.0	0.1 3.9	1.0 .04	250
GL**03C GL**33C	SLOW ACTING BREAK BEFORE MAKE	50.5 48** 43.5 21-22 13-14 47	16 3.6	27 6.0	0.1 3.9	1.0 .04	250
GL**04C GL**34C	SLOW ACTING MAKE BEFORE BREAK	50.5 47** 43.5 21-22 13-14 46	16 3.6	27 6.0	0.1 3.9	1.0 .04	250
GL**05C GL**35C	SLOW ACTING	50.5 47 43.5 13-14 23-24	16 3.6	27 6.0	0.1 3.9	1.0 .04	250
GL**06C GL**36C	SLOW ACTING	50.5 48** 43.5 11-12 21-22	16 3.6	27 6.0	0.1 3.9	1.0 .04	250
GL**20C GL**22C GL**24C GL**32C	SNAP ACTION CONTACTS DOUBLE POLE	50.5 48 46** 43.5 11-12, 21-22 13-14, 23-24 0.9 DIFFERENTIAL TRAVEL	16 3.6	37 8.2	0.1 3.9	1.0 .04	250
GL**21C GL**25C GL**28C GL**31C	STEP 1 STEP 2 SNAP ACTION CONTACTS DOUBLE POLE SEQUENTIAL	50.5 48 46.8 43.5 11-12 13-14 21-22 23-24 .8 DIFFERENTIAL TRAVEL .6 DIFFERENTIAL TRAVEL	16 3.6	N/A	0.1 3.9	1.0 .04	250

FIGURE 13B, TOP ROLLER PLUNGER HEAD, CAM ACTUATION PER EN50041

CATALOG LISTING	CONTACT BLOCK DIAGRAM	NOMINAL TRAVELS AND RELATED TERMINALS CONTACT CLOSED, CONTACT OPEN, CONTACT CLOSED DIFFERENTIAL TRAVEL, ** POSITIVE OPENING TO IEC 947-5-1	MAXIMUM OPERATING FORCE - LB	MAXIMUM DISCONNECT FORCE - LB	MAX OPERATE VEL - IN/S	MIN OPERATE VEL - IN/S	MAX OPERATE FREQUENCY - OPS/MIN
GL**01C GL**07C	SNAP - ACTION CONTACTS SINGLE POLE	0 15 18.3** 43.5 21-22 13-14 1.8 DIFFERENTIAL TRAVEL	9.3 2.1	15.6 3.5	0.17 6.7	1.7 .061	250
GL**03C GL**33C	SLOW ACTING BREAK BEFORE MAKE	0 15** 43.5 21-22 13-14 16.8	9.3 2.1	15.6 3.5	0.17 6.7	1.7 .061	250
GL**04C GL**34C	SLOW ACTING MAKE BEFORE BREAK	0 16.8** 43.5 21-22 13-14 15	9.3 2.1	15.6 3.5	0.17 6.7	1.7 .061	250
GL**05C GL**35C	SLOW ACTING	0 16.8 43.5 13-14 23-24	9.3 2.1	15.6 3.5	0.17 6.7	1.7 .061	250
GL**06C GL**36C	SLOW ACTING	0 15** 43.5 21-22 13-14	9.3 2.1	15.6 3.5	0.17 6.7	1.7 .061	250
GL**20C GL**22C GL**24C GL**32C	SNAP ACTION CONTACTS DOUBLE POLE	0 15 18.3** 43.5 11-12, 21-22 13-14, 23-24 1.8 DIFFERENTIAL TRAVEL	9.3 2.1	21.4 4.8	0.17 6.7	1.7 .061	250
GL**21C GL**25C GL**28C GL**31C	STEP 1 STEP 2 SNAP ACTION CONTACTS DOUBLE POLE SEQUENTIAL	0 15 16.9 43.5 11-12 13-14 21-22 23-24 1.4 DIFFERENTIAL TRAVEL 1.4 DIFFERENTIAL TRAVEL	9.3 2.1	N/A	0.17 6.7	1.7 .061	250

PTC/CAD
 MICRO SWITCH
 HONEYWELL DIVISION
 11000 W. BRIDGEWAY, MINNETONKA, IL 60049
 TEL: 815-434-2000 FAX: 815-434-2001
 WWW.MICROSWITCH.COM

THIS DRAWING COVERS A PROPRIETARY ITEM AND IS THE PROPERTY OF MICRO SWITCH, A DIVISION OF HONEYWELL. THIS DRAWING IS NOT TO BE COPIED OR USED WITHOUT THE APPROVAL OF MICRO SWITCH.

ANSI Y14.5M-1982 APPLIES

MICRO SWITCH
Honeywell Division

SWITCH, ENCLOSED

GL SERIES CHART 1

ENTER ANGLE PROJECTION
SCALE
DO NOT SCALE PRINT
TOLERANCES
UNLESS OTHERWISE SPECIFIED
DIMENSIONS ARE IN INCHES
FRACTIONS ARE IN 32nds UNLESS OTHERWISE SPECIFIED
DECIMALS ARE IN 100ths UNLESS OTHERWISE SPECIFIED
HONEYWELL
MINNETONKA, IL 60049
TEL: 815-434-2000 FAX: 815-434-2001
WWW.MICROSWITCH.COM

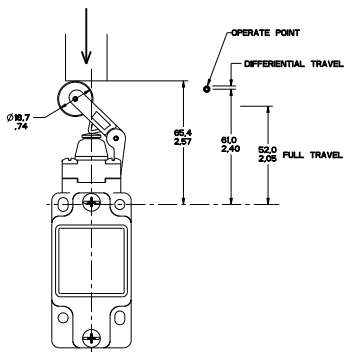


FIGURE 14A

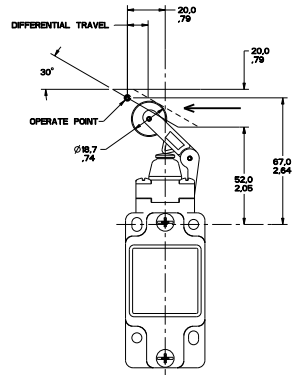


FIGURE 14B

PT/CAD 15
 REV. 12/2001
 DATE 12/2001
 DESIGNED BY 10/2001
 DRAWN BY 10/2001
 CHECKED BY 10/2001
 APPROVED BY 10/2001

THIS DRAWING COVERS A PROPRIETARY ITEM AND IS THE PROPERTY OF MICRO SWITCH, A DIVISION OF HONEYWELL. THIS DRAWING IS NOT TO BE COPIED OR USED WITHOUT THE APPROVAL OF MICRO SWITCH.		FIG. NO. 608 1100	DATE 11/10/82	REV. 1
MICRO SWITCH Honeywell Division	SWITCH, ENCLOSED	GL SERIES CHART 1		
ANSI Y14.5M-1982 APPLIES				

THIRD ANGLE PROJECTION	
SCALE	1:1
DO NOT SCALE PRINT	
TOLERANCES	
FRACTIONS	
DIMENSIONS	
DECIMALS	
ANGLES	
SLITS	
HOLE DRILLS	
WEIGHT	

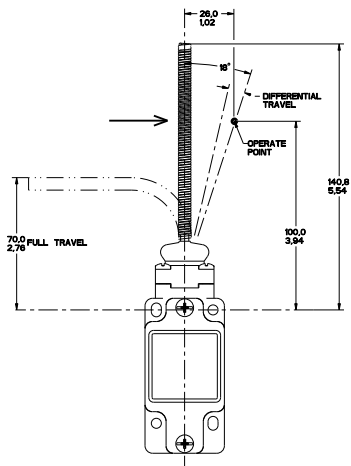


FIGURE 15

PFC/CAD 15
 DATE 12/28/93
 MICRO SWITCH
 HONEYWELL DIVISION
 MILWAUKEE, WI 53203
 TEL 414/666-1000
 FAX 414/666-1001
 CIRCLE 12 ON READER SERVICE CARD

ANSI Y14.5M-1982 APPLIES

THIS DRAWING COVERS A PROPRIETARY ITEM AND IS THE PROPERTY OF MICRO SWITCH, A DIVISION OF HONEYWELL. THIS DRAWING IS NOT TO BE COPIED OR USED WITHOUT THE APPROVAL OF MICRO SWITCH. THE MICRO SWITCH COMPANY MILWAUKEE, WISCONSIN 53203		TYPED ANGLE PROJECTION SCALE 1:1 DO NOT SCALE PRINT TOLERANCES UNLESS OTHERWISE SPECIFIED DIMENSIONS IN PARENTHESES ARE IN INCHES DIMENSIONS IN BRACKETS ARE IN MILLIMETERS UNLESS OTHERWISE SPECIFIED FINISHES UNLESS OTHERWISE SPECIFIED SURFACE FINISH UNLESS OTHERWISE SPECIFIED WEIGHT
MICRO SWITCH Honeywell Division	SWITCH, ENCLOSED	GL SERIES CHART 1

FIGURE 15. CAT WISKER HEAD, ANGULAR ACTUATION

CATALOG LISTING	CONTACT BLOCK DIAGRAM	NOMINAL TRAVELS AND RELATED TERMINALS CONTACT CLOSED, CONTACT OPEN, CONTACT CLOSED DIFFERENTIAL TRAVEL	MAXIMUM OPERATING FORCE N-M LB-IN	MAXIMUM DISCONNECT FORCE N-M LB-IN	MAX OPERATE DEGREE/S	MIN OPERATE VELOCITY DEGREE/S	MAX OPERATE RATE CYCLES/MIN
GL**01K GL**07K	SNAP - ACTION CONTACTS SINGLE POLE 	21-22 13-14 18° 8° DIFFERENTIAL TRAVEL	0.1 .9	N/A	360	8	100
GL**03K GL**33K	SLOW ACTING BREAK BEFORE MAKE 	21-22 13-14 18° 25	0.1 .9	N/A	360	8	100
GL**04K GL**34K	SLOW ACTING MAKE BEFORE BREAK 	21-22 13-14 25° 18°	0.1 .9	N/A	360	8	100
GL**05K GL**35K	SLOW ACTING 	13-14 23-24 25° 	0.1 .9	N/A	360	8	100
GL**06K GL**36K	SLOW ACTING 	11-12 21-22 18° 	0.1 .9	N/A	360	8	100
GL**20K GL**22K GL**24K GL**32K	SNAP ACTION CONTACTS DOUBLE POLE 	11-12, 21-22 13-14, 23-24 18° 	0.1 .9	N/A	360	8	100

FIGURE 15. CAT WISKER HEAD, SIDE ACTUATION AT 100mm

CATALOG LISTING	CONTACT BLOCK DIAGRAM	NOMINAL TRAVELS AND RELATED TERMINALS CONTACT CLOSED, CONTACT OPEN, CONTACT CLOSED DIFFERENTIAL TRAVEL	MAXIMUM OPERATING FORCE N LB	MAXIMUM DISCONNECT FORCE N LB	MAX OPERATE VEL M/S IN/S	MIN OPERATE VEL M/S IN/S	MAX OPERATE FREQUENCY OPS/MIN
GL**01K GL**07K	SNAP - ACTION CONTACTS SINGLE POLE 	21-22 13-14 26 12 DIFFERENTIAL TRAVEL	1.3 .3	N/A	5 19.7	11 .43	100
GL**03K GL**33K	SLOW ACTING BREAK BEFORE MAKE 	21-22 13-14 26.5 38.1 	1.3 0.3	N/A	5 19.7	11 .43	100
GL**04K GL**34K	SLOW ACTING MAKE BEFORE BREAK 	21-22 13-14 26.5 38.1 	1.3 0.3	N/A	5 19.7	11 .43	100
GL**05K GL**35K	SLOW ACTING 	21-22 13-14 38.1 	1.3 0.3	N/A	5 19.7	11 .43	100
GL**06K GL**36K	SLOW ACTING 	11-12 21-22 26.5 	1.3 0.3	N/A	5 19.7	11 .43	100
GL**20K GL**22K GL**24K GL**32K	SNAP ACTION CONTACTS DOUBLE POLE 	11-12, 21-22 13-14, 23-24 26 12 DIFFERENTIAL TRAVEL	1.3 0.3	N/A	5 19.7	11 .43	100

PTC/CAD 15
 FILE: MICROSWITCH...
 11/27/2003 13:30:33
 MICROSWITCH
 11/27/2003 13:30:33

THIS DRAWING COVERS A PROPRIETARY ITEM AND IS THE PROPERTY OF MICRO SWITCH, A DIVISION OF HONEYWELL. THIS DRAWING IS NOT TO BE COPIED OR USED WITHOUT THE APPROVAL OF MICRO SWITCH.
 MICRO SWITCH Honeywell Division SWITCH, ENCLOSED GL SERIES CHART 1
 THIS DRAWING IS NOT TO BE COPIED OR USED WITHOUT THE APPROVAL OF MICRO SWITCH.
 MICRO SWITCH Honeywell Division SWITCH, ENCLOSED GL SERIES CHART 1