



**MICRO SWITCH**

FREEPORT, ILLINOIS, U.S.A.  
A DIVISION OF HONEYWELL

FED. MFG. CODE 91829

# SWITCH-BASIC

CATALOG LISTING

## DT-2RV22-A7

5

REPLACES

RELEASE NO.

DRAWING NUMBER

ISSUE

CHECK

REVISIONS

CHECK

CHECK

DRAWN

FO-50378

DT-2RV22-A7

M

8

13

A CO17725  
L E B  
11 JUNE 63

B CO 24941  
M B S  
2 DEC 68

C CO26075  
M B S  
26 AUG 69

D CO37528  
C J H  
31 AUG 76

E CO38280  
K P K  
30 MAR 77

F CO61634  
TSK  
17 JUL 87

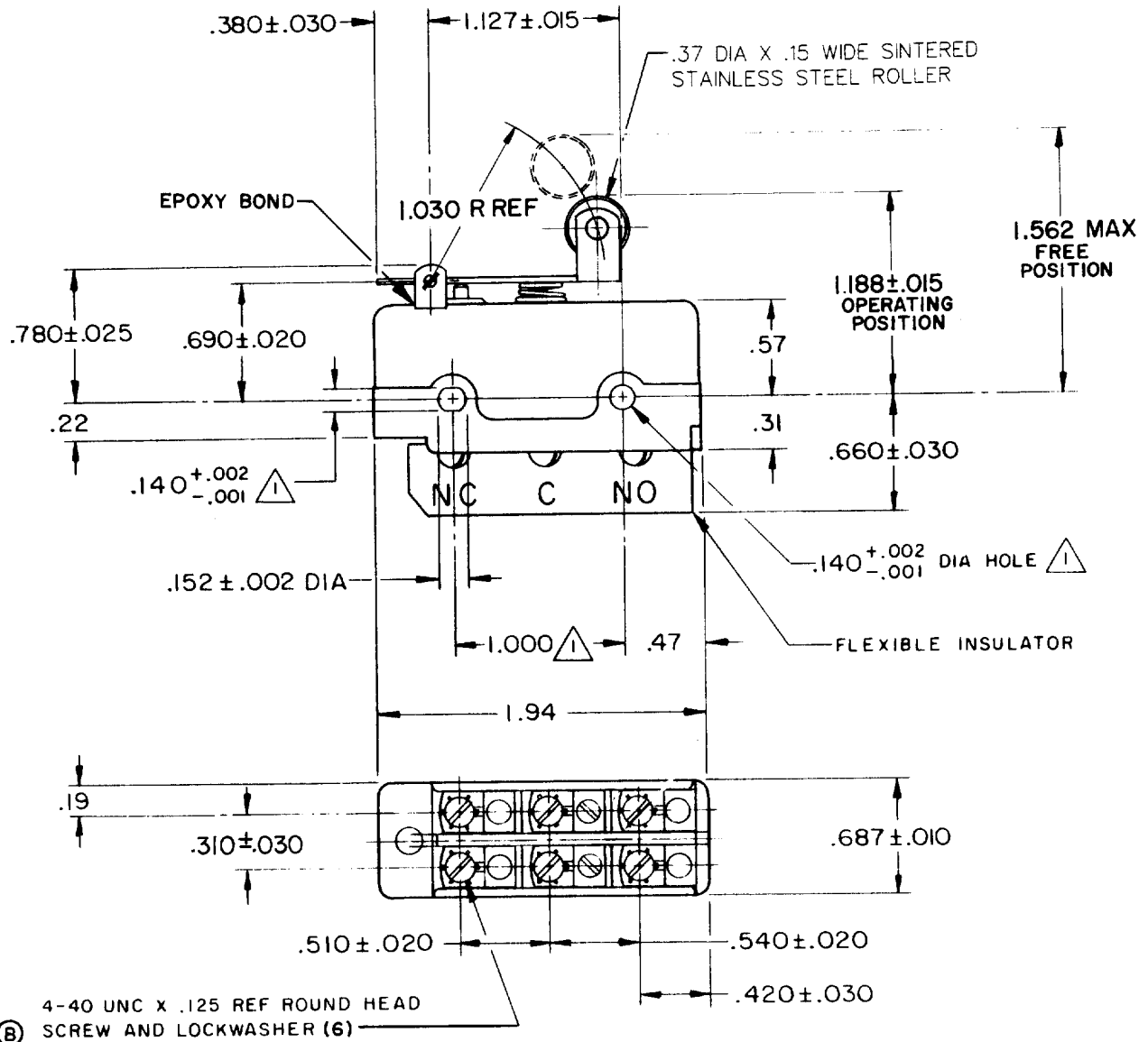
G CO-75204-B  
S A V  
1 FEB 94

18 JUN 63

LSD

L E B

11 JUNE 63



THIS DRAWING COVERS A PROPRIETARY ITEM AND IS THE PROPERTY OF MICRO SWITCH, A DIVISION OF MINNEAPOLIS-HONEYWELL REGULATOR CO. THIS DRAWING IS NOT TO BE COPIED OR USED WITHOUT THE APPROVAL OF MICRO SWITCH.

CHARACTERISTICS	ELECTRICAL DATA	SCALE FULL
OPERATING FORCE-----9-14 OZ	CONTACT ARRANGEMENT D P D T	DO NOT SCALE PRINT
RELEASE FORCE-----3 OZ MIN	UL LISTED-FILE E12252 CODE L59 10A-125 OR 250 VAC 0.3A-125 VDC; 0.15A-250 VDC	UNLESS OTHERWISE NOTED DIMENSIONS ARE IN INCHES <b>TOLERANCES ARE:</b>
DIFFERENTIAL TRAVEL-----.195-.305		ONE PLACE (.0) ±.030
OVERTRAVEL-----.031 MIN		TWO PLACE (.00) ±.015
		THREE PLACE (.000) ±.005
		ANGLES ±
		WEIGHT .085 LB