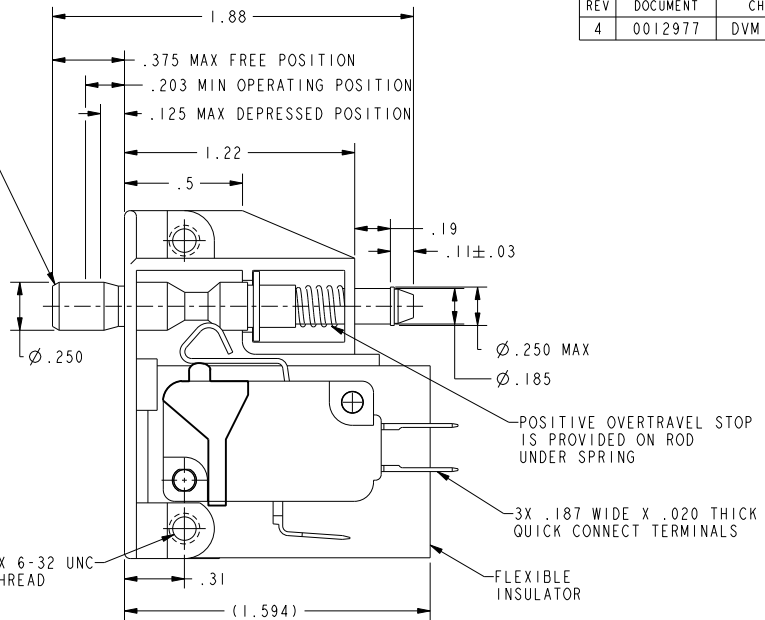
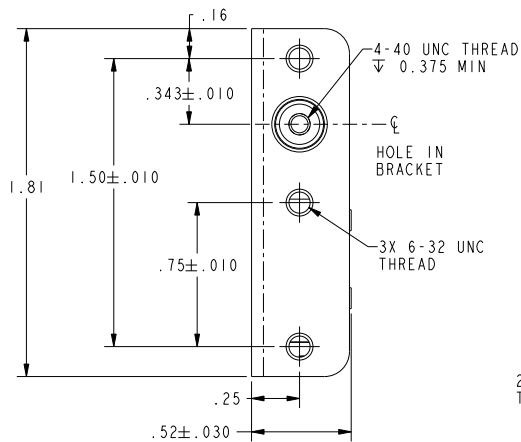


FO-55111-B

HONEYWELL
PART NUMBER
23AC80
KC-R1632

PUSH TO OPERATE-RETURNS
AUTOMATICALLY TO POSITION
SHOWN
PULL TO OPERATE-REMAINS IN
OPERATED POSITION UNTIL RESET
FOR AUTOMATIC RETURN BY NEXT
FULL STROKE "PUSH" OPERATION



NOTES

1. UNIT INCLUDES CATALOG LISTING "V7-6A17D8-296-S" BASIC SWITCH
2. BASIC SWITCH PLASTIC PARTS ARE MADE OF GLASS FILLED PBT AND TEFLON FILLED PHENOLIC
3. ACTUATOR ROD MADE OF HIGH STRENGTH PLASTIC
4. UL AND CSA APPROVALS APPLY TO BASIC SWITCH ONLY

REPLACES: X110597-AC

CHARACTERISTICS		ELECTRICAL DATA		DESIGN UNITS: INCH		DRAWN		DCS		26FEB98		Honeywell							
TOTAL TRAVEL:		CONTACT ARRANGEMENT		TOLERANCES UNLESS NOTED:		CHECK		J A F		10JUN98									
.250 APPROX PUSH DIRECTION		S P D T		NO PLACE X ±		0.030		THIS DRAWING COVERS A PROPRIETARY ITEM AND IS THE PROPERTY OF HONEYWELL. THIS DRAWING IS NOT TO BE COPIED OR USED WITHOUT THE PERMISSION OF HONEYWELL.				TITLE							
.187 APPROX PULL DIRECTION		5A 125, <u>250</u> , 277 VAC		ONE PLACE .X ±		0.015													
FULLY DEPRESSED FORCE-- 4 LBS MAX		1/10HP <u>250</u> VAC		TWO PLACE .XX ±		0.005													
				THREE PLACE .XXX ±															
				FOUR PLACE .XXXX ±				INTERPRET PER ASME Y14.5M-1994 OTHER HONEYWELL ENGINEERING STANDARDS MAY APPLY				SIZE		TYPE		DRAWING NAME		REV	
				ANGLES X ±								B		I		23AC80		4	
				THIRD ANGLE PROJECTION				Pro/ENGINEER 3D				SCALE		2:1				SHEET 1 OF 1	
				