



MICRO SWITCH

FREEPORT, ILLINOIS, U.S.A.
A DIVISION OF HONEYWELL

FED. MFG. CODE 91929

SWITCH—BASIC

CATALOG LISTING
BZ-2RQ66

ALH4500 / JG08420

BZ-2RQ66
PAGE 1 OF 1

M
DRAWING NUMBER

ISSUE 8

REPLACES

RELEASE NO.

CHECK

29 AUG 05

29 AUG 64

2, APR 64

27 MAR 64

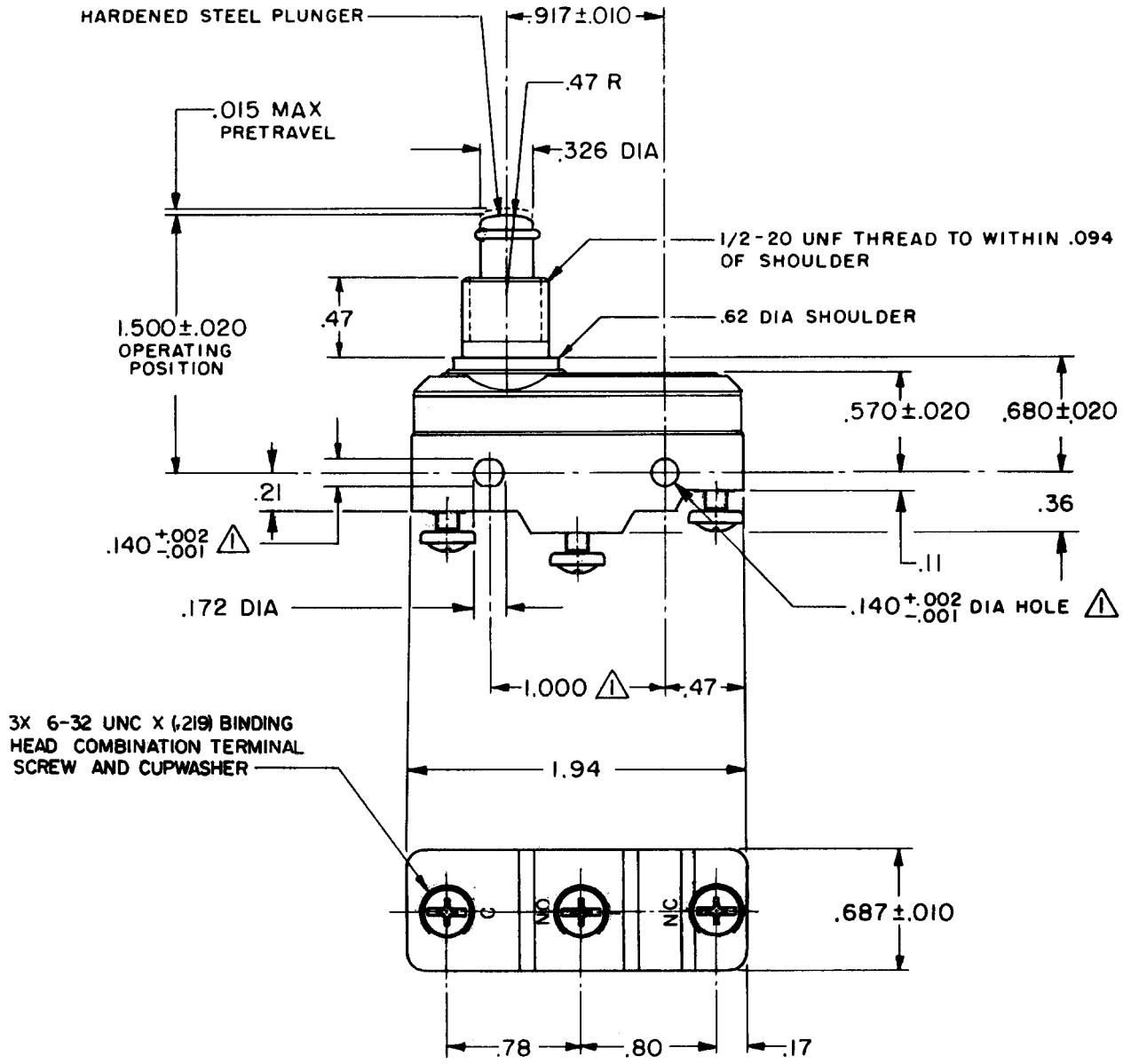
27 MAR 64

FORMTEK
FO-50376

DRAWN

LLD

REVISIONS		CHECK
A	CO17410 LLD 27 MAR 64	29 AUG 05
B	CO34353 BEN 1 NOV 74	RJ
C	CO36099 P 6 JUN 77	CO
D	CO-73287-B DHD 17 MAY 93	CO
E	CO-77592 DAW 15 AUG 94	CO
F	CO93346 DLT 1 SEP 98	CO
G	0015138 SPK 29 AUG 05	CO



NOTE
 ▲ - MOUNTING HOLES WILL ACCEPT PINS OR SCREWS OF .139 MAX DIA ON 1.000 ± .002 CENTERS

THIS DRAWING COVERS A PROPRIETARY ITEM AND IS THE PROPERTY OF MICRO SWITCH, A DIVISION OF MINNEAPOLIS-HONEYWELL REGULATOR CO. THIS DRAWING IS NOT TO BE COPIED OR USED WITHOUT THE APPROVAL OF MICRO SWITCH.

CHARACTERISTICS
OPERATING FORCE ----- 9-13 OZ
RELEASE FORCE ----- 4 OZ MIN
DIFFERENTIAL TRAVEL -- .0004 - .0020
OVERTRAVEL ----- .219 MIN

ELECTRICAL DATA
CONTACT ARRANGEMENT S P D T
15A - 125, 250 OR 480 VAC, 2A - 600 VAC 1/8HP - 125 VAC; 1/4HP - 250 VAC CODE L74 1/2A - 125 VDC; 1/4A - 250 VDC
-L288- -L306- -L315-
16A 250V ~ T85 5E4

SCALE FULL
DO NOT SCALE PRINT
UNLESS OTHERWISE NOTED
DIMENSIONS ARE IN INCHES
TOLERANCES ARE:
ONE PLACE (.0) ±.030
TWO PLACE (.00) ±.015
THREE PLACE (.000) ±.005
ANGLES ±
WEIGHT .120 LB