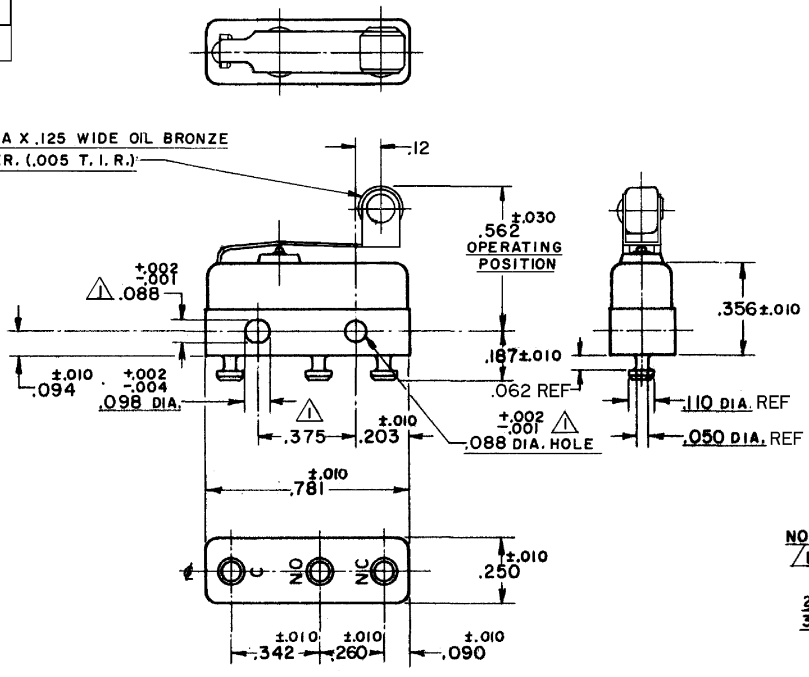


FO-55111-A

HONEYWELL
PART NUMBER
111SM23-T
PRODUCT CODE
TYJ2360

REV	DOCUMENT	CHANGED BY	CHECK
7	0038225	PRS 04APR08	BLR



NOTE:
 1- MOUNTING HOLES WILL ACCEPT PINS OR SCREWS OF .087 MAX. DIA. ON .375 ±.002 CENTERS.
 2- TERMINALS ARE PLATED FOR SOLDERING.
 3- MATING CONTACT SURFACES ARE 24K SOLID GOLD OVERLAY

RELEASE NO. SR - 8330
 REPLACES -

CHARACTERISTICS	ELECTRICAL DATA	DESIGN UNITS: INCH TOLERANCES UNLESS NOTED:	DRAWN	VK	26 OCT 07	Honeywell
			CHECK	RJ	26 OCT 07	
OPERATING FORCE - - - - 7 OZ MAX	CONTACT ARRANGEMENT S P D T	NO PLACE .X ± 0.030	THIS DRAWING COVERS A PROPRIETARY ITEM AND IS THE PROPERTY OF HONEYWELL. THIS DRAWING IS NOT TO BE COPIED OR USED WITHOUT THE PERMISSION OF HONEYWELL.			TITLE
RELEASE FORCE - - - - 2 OZ MIN	30 VOLTS DC RATING	ONE PLACE .X ± 0.015	INTERPRET PER ANSI Y14.5M-1982 OTHER HONEYWELL ENGINEERING STANDARDS MAY APPLY			SWITCH - BASIC
PRETRAVEL - - - - .219 MAX	SEA LEVEL 50,000 FT	TWO PLACE .XX ± 0.005	SIZE	TYPE	DRAWING NAME	REV
DIFFERENTIAL TRAVEL - - .025 MAX	INDUCTIVE 1/2 AMP 1/2 AMP	THREE PLACE .XXX ±	B	I	111SM23-T	7
OVERTRAVEL - - - - .030 MIN	RESISTIVE 1 AMP 1 AMP	FOUR PLACE .XXXX ±	SCALE	-	WEIGHT .008 LB MAX	SHEET
	MAXIMUM INRUSH 2 AMP	ANGLES ±	RASTER			1 OF 1
APPROVALS	KEMA CE 1A, 250V ~ T85 1E4 UL CSA 1A, 125 VAC ~	THIRD ANGLE PROJECTION				

4

3

2

1