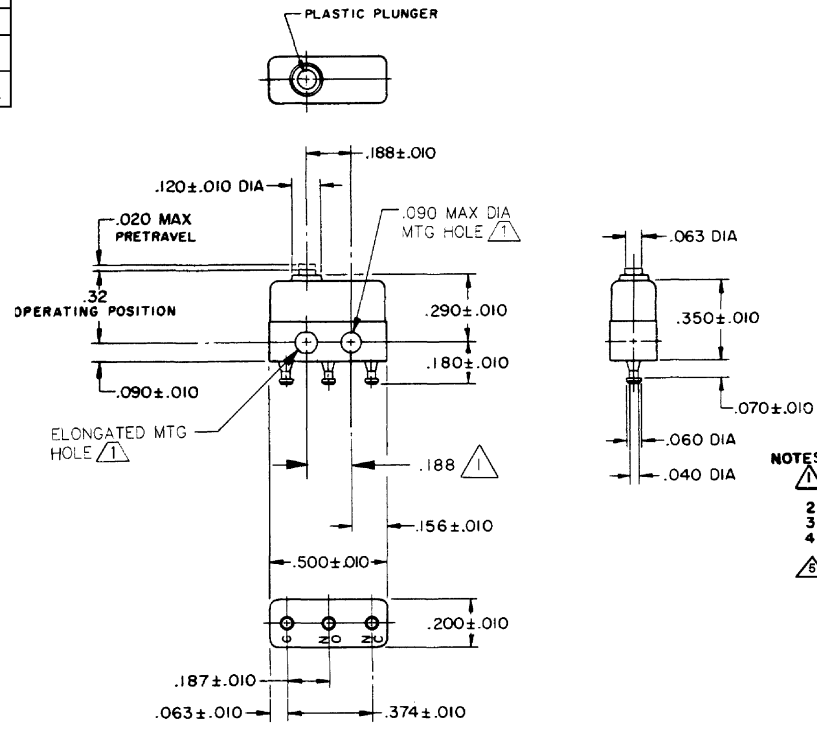


FO-55111-A
 HONEYWELL
 PART NUMBER
 4SX36-T
 PRODUCT CODE
 VDF0960
 FAA-PMA

REV	DOCUMENT	CHANGED BY	CHECK
10	0038447	SS 28MAR08	BLR



NOTES
 1 MOUNTING HOLES WILL ACCEPT PINS OR SCREWS OF .087 MAX DIA ON .188±.002 CENTERS
 2 TERMINALS ARE PLATED FOR SOLDERING
 3 SWITCH WILL WITHSTAND TEMPERATURE OF 400°F
 4 SWITCH HAS A GREATER OVERTRAVEL THAN STANDARD CONSTRUCTION ADDITIONAL OVERTRAVEL WILL TEND TO REDUCE MECHANICAL LIFE
 5 FOR MANUFACTURING DETAIL SEE ASSEMBLY DRAWING 4SX36-T FOR FAA-PMA

RELEASE NO. PR-253
 REPLACES

CHARACTERISTICS
OPERATING FORCE - - - - 5 OZ MAX
RELEASE FORCE - - - - 1 OZ MIN
DIFFERENTIAL TRAVEL - - - .005 MAX
OVERTRAVEL - - - - - .010 MIN

ELECTRICAL DATA
CONTACT ARRANGEMENT S P D T
7A 250V~ T125 5E4 7A 250 VAC
FAA-PMA

DESIGN UNITS: INCH
TOLERANCES UNLESS NOTED:
NO PLACE X ± 0.030
ONE PLACE .X ± 0.015
TWO PLACE .XX ± 0.005
THREE PLACE .XXX ±
FOUR PLACE .XXXX ±
ANGLES ±
THIRD ANGLE PROJECTION

DRAWN SPK 06FEB08
CHECK RJ 06FEB08
THIS DRAWING COVERS A PROPRIETARY ITEM AND IS THE PROPERTY OF HONEYWELL. THIS DRAWING IS NOT TO BE COPIED OR USED WITHOUT THE PERMISSION OF HONEYWELL.
INTERPRET PER ANSI Y14.5M-1982 OTHER HONEYWELL ENGINEERING STANDARDS MAY APPLY
RASTER

Honeywell			
TITLE SWITCH - BASIC			
SIZE B	TYPE I	DRAWING NAME 4SX36-T	REV 10
SCALE -	WEIGHT:.003 LB MAX	SHEET 1 OF 1	