

**MICRO SWITCH**

A DIVISION OF MINNEAPOLIS-HONEYWELL REGULATOR COMPANY  
MINNEAPOLIS, MINNESOTA

FED. MFR. CODE 91929

**SWITCH - BASIC**

BA-2RV22-A2  
ISSUE 2

BA-2RV22-A2  
PAGE 1 OF 1

M

DRAWING NUMBER

9

ISSUE

REPLACES

RELEASE NO.

CHECK

REVISIONS

A	CO	15663	8 CH	15 DEC 61
B	CO	70184-6	8 JW	8 MAR 62
C	CO	72397	JJO	30 APR 62
D	CO	73287-J	JAL	22 NOV 63
E	CO	75204B	JWB	1 FEB 64
F	CO	77590	SAD	8 JUN 64
G	CO	093346	DLT	26 AUG 68

CHECK

11 JAN 62

CHECK

DAW

CHECK

15 DEC 61

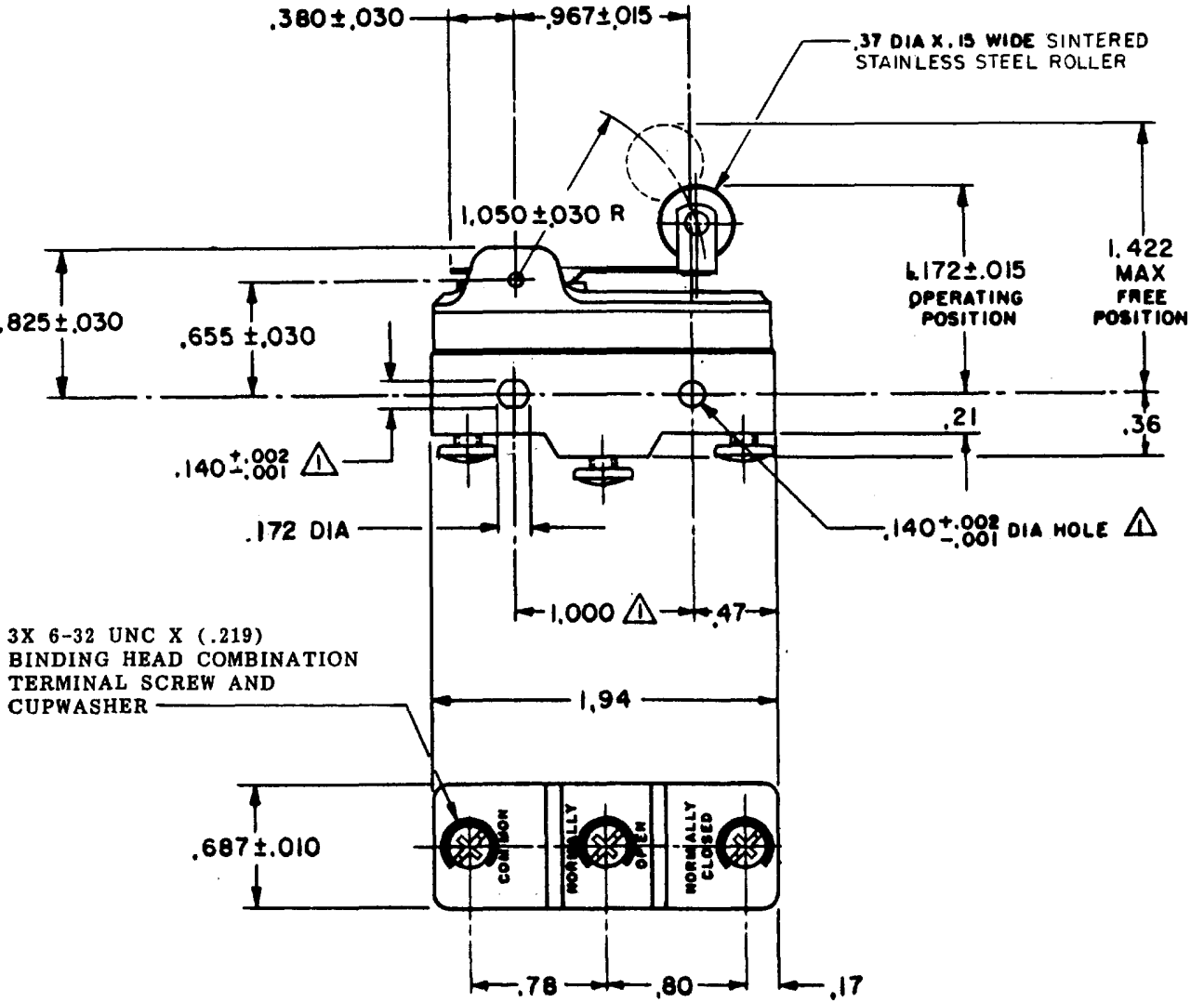
CHECK

GCH

FORMTEK

DRAWN

J-50376



**NOTE**  
 ▲ - MOUNTING HOLES WILL ACCEPT PINS OR SCREWS OF .139 MAX DIA ON 1.000 ± .002 CENTERS

THIS DRAWING COVERS A PROPRIETARY ITEM AND IS THE PROPERTY OF MICRO SWITCH, A DIVISION OF MINNEAPOLIS-HONEYWELL REGULATOR CO. THIS DRAWING IS NOT TO BE COPIED OR USED WITHOUT THE APPROVAL OF MICRO SWITCH.

CHARACTERISTICS	ELECTRICAL DATA		SCALE ---- FULL
OPERATING FORCE ----- 6 OZ MAX	CONTACT ARRANGEMENT <b>SPDT</b>	BREAK DISTANCE <b>.020 MIN</b>	DO NOT SCALE PRINT
RELEASE FORCE ----- 1 1/2 OZ MIN	L23	UNDERWRITERS' LAB. INC. LISTED RATING 20A - 125, 250 OR 480 VAC 10A - 125 VAC "L" 1HP - 125 VAC, 2HP - 250 VAC 1/2A - 125 VDC, 1/4A - 250 VDC CE D SR 20(3)A 250V ~ T85 5E4	UNLESS OTHERWISE SPECIFIED
PRETRAVEL ----- .250 MAX	L288		DIMENSIONS ARE IN INCHES
DIFFERENTIAL TRAVEL ----- .045 MAX	L299		<b>TOLERANCES ARE:</b>
OVERTRAVEL ----- .030 MIN	L308		ONE PLACE (.0) ± .030 TWO PLACE (.00) ± .015 THREE PLACE (.000) ± .008 ANGLES ±
			WEIGHT