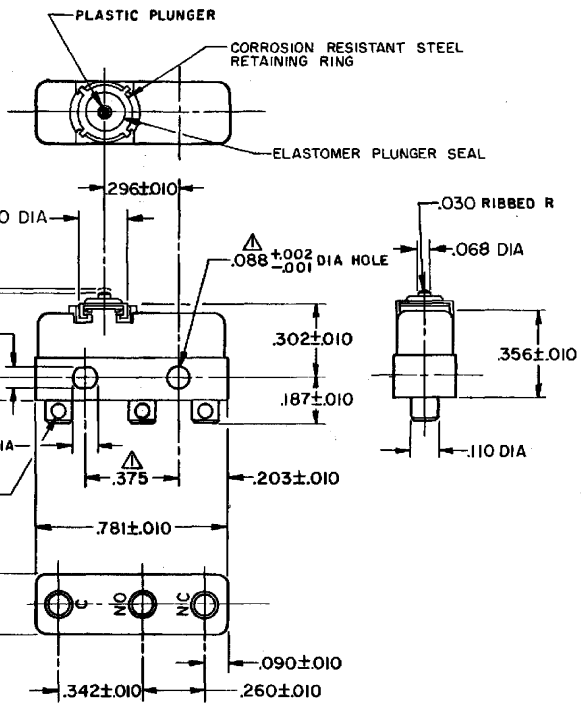


FO-55111-A

HONEYWELL
PART NUMBER
411SM1
PRODUCT CODE
TZG0011

REV	DOCUMENT	CHANGED BY	CHECK
8	0038115	VS 28APR08	BLR



NOTE -
 1 - MOUNTING HOLES WILL ACCEPT PINS OR SCREWS OF .087 MAX DIA ON .375±.002 CENTERS
 2 - TERMINALS ARE PLATED FOR SOLDERING
 3 - SWITCH WILL WITHSTAND TEMPERATURES FROM -40° TO +250° F
 4 - TEMPERATURE EXTREMES MAY CAUSE FORCE CHARACTERISTICS TO CHANGE. STATED CHARACTERISTICS ARE FOR ROOM TEMPERATURE
 5 - SEAL CONSTRUCTION PROVIDES SPLASH AND DUST RESISTANCE

RELEASE NO. PR - 1539 -T
 REPLACES -

CHARACTERISTICS	△
OPERATING FORCE	3 - 7 1/2 OZ
RELEASE FORCE	1 OZ MIN
DIFFERENTIAL TRAVEL	.004 MAX
OVERTRAVEL	.005 MIN

ELECTRICAL DATA	
CONTACT ARRANGEMENT S P D T	
30 VOLTS DC RATING	
SEA LEVEL	50,000 FT
INDUCTIVE	3 AMP 2.5 AMP
RESISTIVE	5 AMP 5 AMP
MAXIMUM INRUSH 24 AMP	
KEMA CE	5A, 250V ~ T85 1E4
UL CSA	5A, 250 VAC

DESIGN UNITS: INCH
TOLERANCES UNLESS NOTED:
NO PLACE .X ±
ONE PLACE .X ±
TWO PLACE .XX ±
THREE PLACE .XXX ±
FOUR PLACE .XXXX ±
ANGLES ±
THIRD ANGLE PROJECTION

DRAWN	VK	04 DEC 07
CHECK	RJ	04 DEC 07
THIS DRAWING COVERS A PROPRIETARY ITEM AND IS THE PROPERTY OF HONEYWELL. THIS DRAWING IS NOT TO BE COPIED OR USED WITHOUT THE PERMISSION OF HONEYWELL.		
INTERPRET PER ANSI Y14.5M-1982 OTHER HONEYWELL ENGINEERING STANDARDS MAY APPLY		
RASTER		

Honeywell			
TITLE SWITCH - BASIC			
SIZE	TYPE	DRAWING NAME	REV
B	I	411SM1	8
SCALE	-	WEIGHT .006 LB MAX	SHEET 1 OF 1

4

3

2

1