



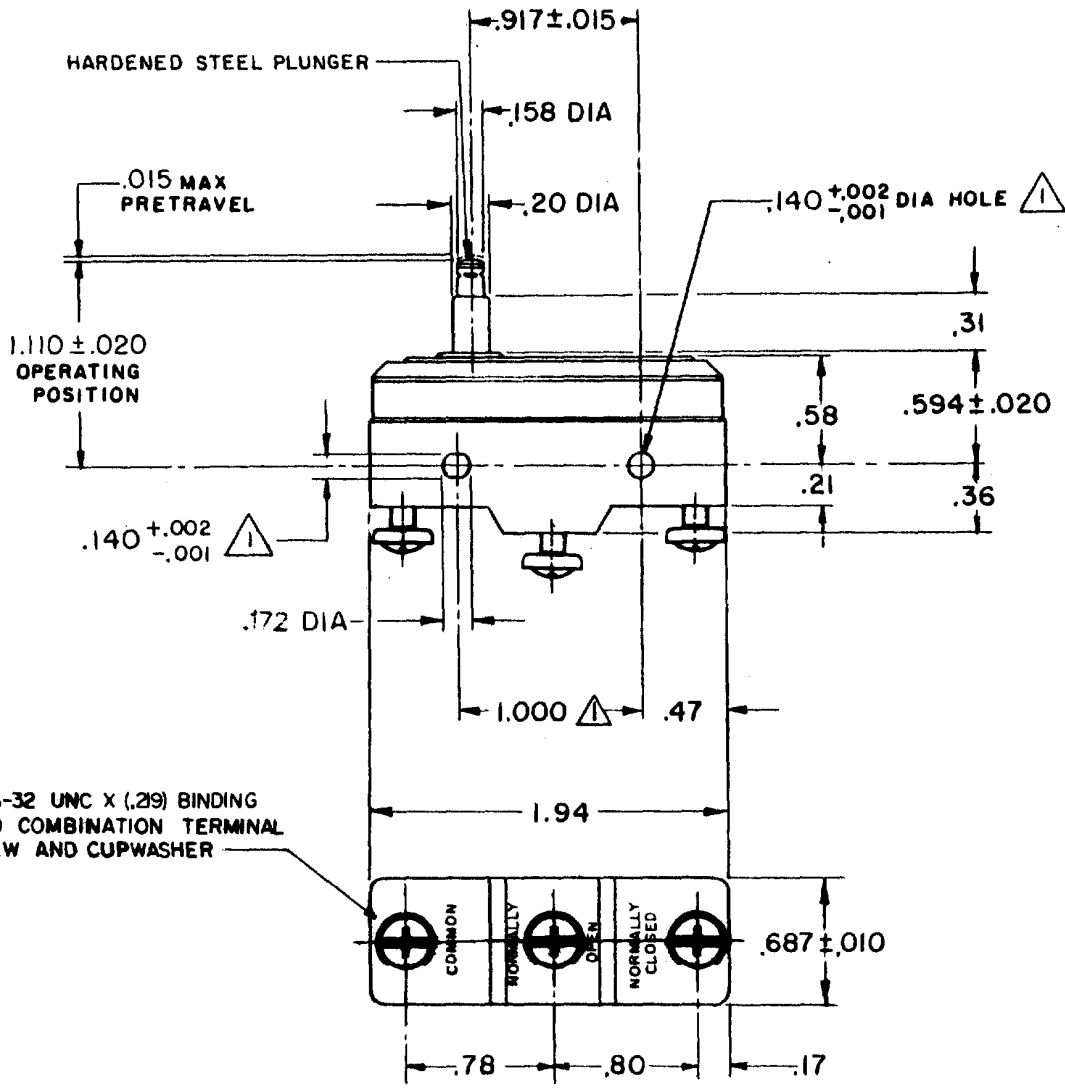
MICRO SWITCH
 FREEPORT, ILLINOIS, U.S.A.
 A DIVISION OF HONEYWELL
 FED. MFG. CODE 91929

SWITCH - BASIC

CATALOG LISTING

BZ - 2RS - A2

BZ - 2RS - A2
 PAGE 1 OF 1
 M
 DRAWING NUMBER
 7
 ISSUE
 REVISIONS
 A CO17410
 G C H
 2 APRIL 63
 B CO44156
 S J S
 20 APR 78
 C CO-73287-B
 D H D
 19 MAY 93
 D CO-77589
 K D R
 29 MAR 94
 E CO93346
 D L T
 11 SEP 98
 FORMTEK
 FO-50378
 DRAWN
 G C H
 2 APRIL 63
 CHECK
 L.S.D.
 16 APR 63
 CHECK
 RELEASE NO.



3X 6-32 UNC X (.29) BINDING HEAD COMBINATION TERMINAL SCREW AND CUPWASHER

NOTE
 ▲ MOUNTING HOLES WILL ACCEPT PINS OR SCREWS OF .139 MAX DIA ON 1.000 ± .002 CENTERS.

THIS DRAWING COVERS A PROPRIETARY ITEM AND IS THE PROPERTY OF MICRO SWITCH, A DIVISION OF MINNEAPOLIS-HONEYWELL REGULATOR CO. THIS DRAWING IS NOT TO BE COPIED OR USED WITHOUT THE APPROVAL OF MICRO SWITCH.

CHARACTERISTICS	ELECTRICAL DATA	SCALE FULL
OPERATING FORCE ----- 9 - 13 OZ	CONTACT ARRANGEMENT S P D T	DO NOT SCALE PRINT
RELEASE FORCE ----- 4 OZ MIN	UL LISTED-FILE E12252	UNLESS OTHERWISE NOTED
DIFFERENTIAL TRAVEL ----- .0004 - .0020	CODE 196 15A-125, 250 OR 480 VAC	DIMENSIONS ARE IN INCHES
OVERTRAVEL ----- .060 MIN	1/8 HP-125 VAC; 1/4 HP-250 VAC	TOLERANCES ARE:
	1/2 A-125 VDC; 1/4 A-250 VDC	ONE PLACE (.0) ± .030
	L288	TWO PLACE (.00) ± .015
	L299	THREE PLACE (.000) ± .005
	L306	ANGLES ± .005
	16A 250V ~ T85 5E4	WEIGHT .063 LB