

# MICRO SWITCH

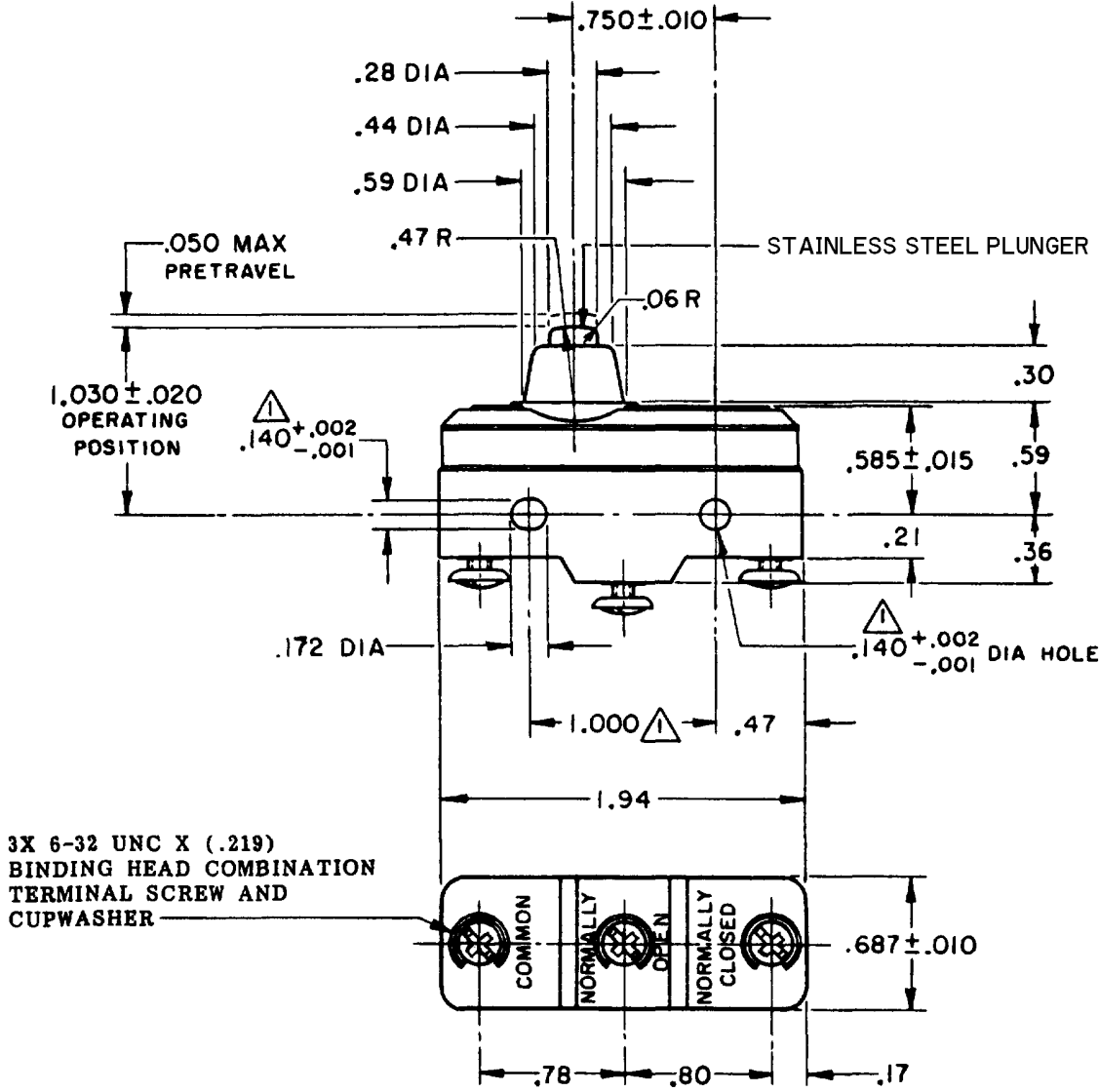
A DIVISION OF MINNEAPOLIS-HONEYWELL REGULATOR COMPANY  
PROGRAM, BARTONS

FED. MFR. CODE 91929

## SWITCH - BASIC

CATALOG LISTING  
**BA-2RB-A2**

CATALOG LISTING  
**BA-2RB-A2**  
 PAGE 1 OF 1  
**M**  
 DRAWING NUMBER  
 ISSUE 7  
 REVISIONS  
 A CO 9600  
 R R R  
 29 APR 80  
 B CO34310  
 P P K  
 20 DEC 74  
 C CO-73287-J  
 J A L  
 22 NOV 93  
 D CO-77590  
 S A D  
 B JUN 94  
 E CO93346  
 D L T  
 22 AUG 98  
 F CO-95750-B  
 C S L  
 29 MAR 00  
 FORMTEK  
 3-50378  
 DRAWN  
 R E R  
 29 APR 80  
 CHECK  
 G C H  
 9 MAY 80  
 CHECK  
 (M) BA-2RB-A2  
 ISSUE 1  
 REPLACES  
 RELEASE NO.



3X 6-32 UNC X (.219)  
BINDING HEAD COMBINATION  
TERMINAL SCREW AND  
CUPWASHER

**NOTE**  
 ▲ MOUNTING HOLES WILL ACCEPT PINS OR SCREWS  
 OF .139 MAX DIA ON  $1.000 \pm .002$  CENTERS

THIS DRAWING COVERS A PROPRIETARY ITEM AND IS THE PROPERTY OF MICRO SWITCH, A DIVISION OF MINNEAPOLIS-HONEYWELL REGULATOR CO. THIS DRAWING IS NOT TO BE COPIED OR USED WITHOUT THE APPROVAL OF MICRO SWITCH.

CHARACTERISTICS	ELECTRICAL DATA	SCALE FULL
OPERATING FORCE ----- 14-22 OZ	CONTACT ARRANGEMENT S P D T	DO NOT SCALE PRINT
RELEASE FORCE ----- 10 OZ MIN	L23 UNDERWRITERS' LAB. INC. LISTED RATING 20A - 125, 250 OR 480 VAC 10A - 125 VAC "IL" 1HP - 125 VAC, 2HP - 250 VAC 1/2A - 125 VDC, 1/4A - 250 VDC	UNLESS OTHERWISE SPECIFIED DIMENSIONS ARE IN INCHES <b>TOLERANCES ARE:</b>
DIFFERENTIAL TRAVEL ----- .002-.0075	L288 L299 L308	ONE PLACE (.0) $\pm .030$ TWO PLACE (.00) $\pm .015$ THREE PLACE (.000) $\pm .005$ ANGLES $\pm$
OVERTRAVEL ----- .094 MIN	20(3)A 250V $\sim$ T85 5E4	WEIGHT .064 LB