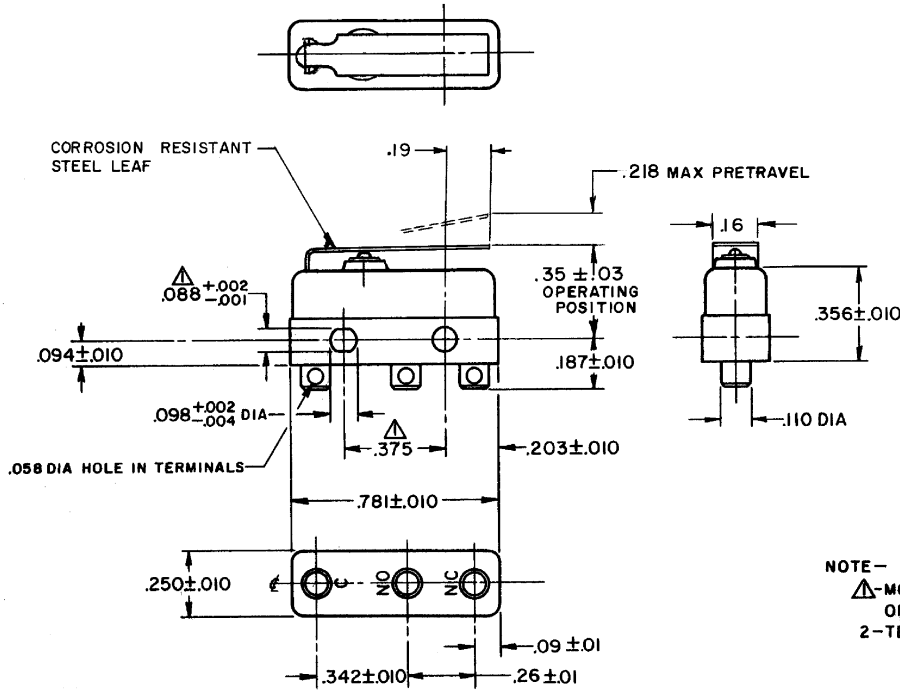


HONEYWELL PART NUMBER
111SM1
PRODUCT CODE TYJ0100

REV	DOCUMENT	CHANGED BY	CHECK
10	0038225	PRS 04APR08	BLR



NOTE -  
 ▲-MOUNTING HOLES WILL ACCEPT PINS OR SCREWS  
 OF .087 MAX DIA ON .375 ± .002 CENTERS  
 2-TERMINALS ARE PLATED FOR SOLDERING

RELEASE NO.	SR - 8707
REPLACES	-

CHARACTERISTICS
OPERATING FORCE - - - - 7 OZ MAX
RELEASE FORCE - - - - 2 OZ MIN
DIFFERENTIAL TRAVEL - - .030 MAX
OVERTRAVEL - - - - .030 MIN

ELECTRICAL DATA	
CONTACT ARRANGEMENT S P D T	
30 VOLTS DC RATING	
SEA LEVEL	50,000 FT
INDUCTIVE	3 AMP 2.5 AMP
RESISTIVE	5 AMP 5 AMP
MAXIMUM INRUSH 24 AMP	
KEMA CE	5A, 250V ~ T85 1E4
UL CSA	5A, 250 VAC ~

DESIGN UNITS: INCH	
TOLERANCES UNLESS NOTED:	
NO PLACE	X ± 0.030
ONE PLACE	.X ± 0.015
TWO PLACE	.XX ± 0.005
THREE PLACE	.XXX ±
FOUR PLACE	.XXXX ±
ANGLES	±
THIRD ANGLE PROJECTION	

DRAWN	VK	23 OCT 07
CHECK	RJ	23 OCT 07
THIS DRAWING COVERS A PROPRIETARY ITEM AND IS THE PROPERTY OF HONEYWELL. THIS DRAWING IS NOT TO BE COPIED OR USED WITHOUT THE PERMISSION OF HONEYWELL.		
INTERPRET PER ANSI Y14.5M-1982 OTHER HONEYWELL ENGINEERING STANDARDS MAY APPLY		
RASTER		

<b>Honeywell</b>			
TITLE SWITCH - BASIC			
SIZE	TYPE	DRAWING NAME	REV
B	I	111SM1	10
SCALE	-	WEIGHT .006 LB MAX	SHEET 1 OF 1