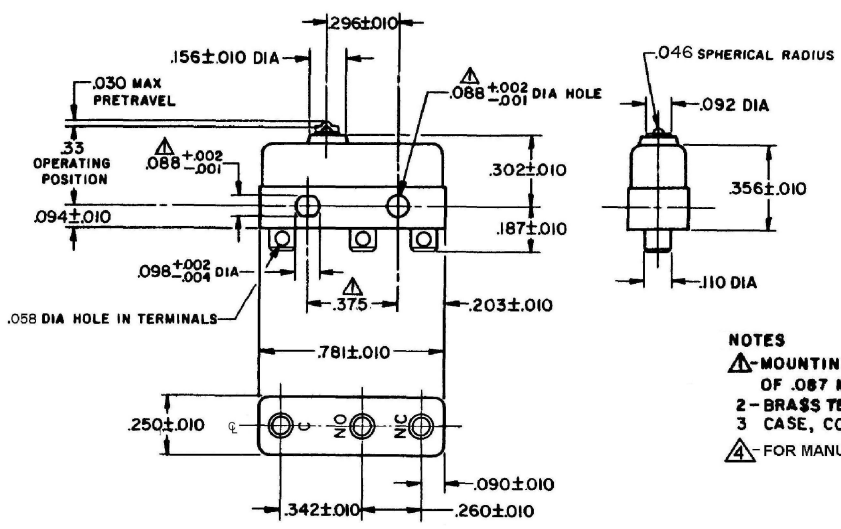
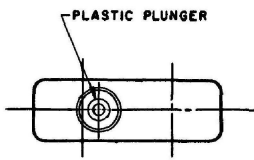


FO-55111-A
 HONEYWELL
 PART NUMBER
1SM1
 FAA - PMA
 PRODUCT CODE
 TWA0100
 JG-80004 & JG-80004J

REV	DOCUMENT	CHANGED BY	CHECK
27	0034444	KSR 10OCT07	RJ



NOTES
 ▲ MOUNTING HOLES WILL ACCEPT PINS OR SCREWS OF .087 MAX DIA ON .375 ± .002 CENTERS
 2 - BRASS TERMINALS ARE 60/40 TIN/LEAD PLATED FOR SOLDERING
 3 - CASE, COVER AND PLUNGER ARE MADE OF PHENOLIC MATERIAL
 ▲ FOR MANUFACTURING DETAIL SEE ASSEMBLY DRAWING 1SM1 FOR FAA-PMA

RELEASE NO.	-
REPLACES	-

CHARACTERISTICS
OPERATING FORCE - - - - 3 - 5 OZ
RELEASE FORCE - - - - 1 OZ MIN
DIFFERENTIAL TRAVEL - - .004 MAX
OVERTRAVEL - - - - .005 MIN

ELECTRICAL DATA	
CONTACT ARRANGEMENT S P D T	
30 VOLTS DC RATING	
INDUCTIVE	SEA LEVEL 50,000 FT
RESISTIVE	5 AMP 5 AMP
MAXIMUM INRUSH 24 AMP	
KEMA, CE	5A, 250V ~ T85 1E4
UL, CSA	5A, 250 VAC ~
AVIATION	FAA-PMA

DESIGN UNITS: INCH	
TOLERANCES UNLESS NOTED:	
NO PLACE	.X ±
ONE PLACE	.XX ±
TWO PLACE	.XXX ±
THREE PLACE	.XXXX ±
FOUR PLACE	.XXXXX ±
ANGLES	±
THIRD ANGLE PROJECTION	

DRAWN	KSR	10OCT07
CHECK	RJ	10OCT07
THIS DRAWING COVERS A PROPRIETARY ITEM AND IS THE PROPERTY OF HONEYWELL. THIS DRAWING IS NOT TO BE COPIED OR USED WITHOUT THE PERMISSION OF HONEYWELL.		
INTERPRET PER ANSI Y14.5M-1982 OTHER HONEYWELL ENGINEERING STANDARDS MAY APPLY		
RASTER		

Honeywell			
TITLE SWITCH - BASIC			
SIZE	TYPE	DRAWING NAME	REV
B	I	1SM1	27
SCALE	-	WEIGHT .006 LB MAX	SHEET 1 OF 1

4

3

2

1