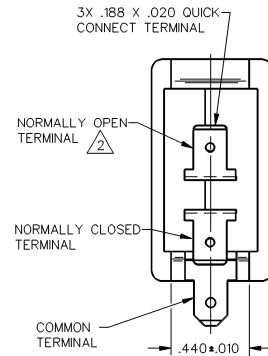
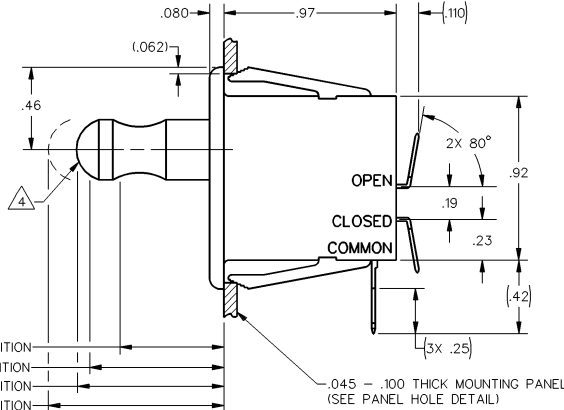
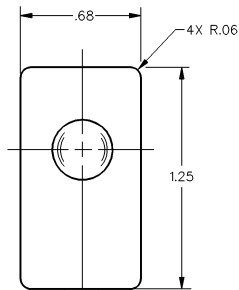
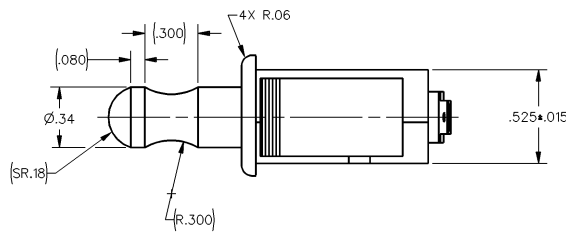
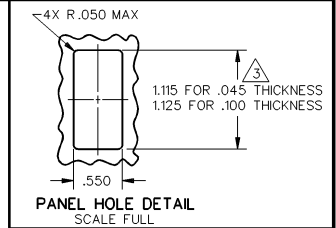


MICRO SWITCH
a Honeywell Division
FED. MFG. CODE 91929

SWITCH - BASIC

CATALOG LISTING
1DM437



.585 MAX OVERTRAVEL POSITION
.755±.050 OPERATING POSITION
.825±.030 FREE POSITION
.990 MAX EXTENDED POSITION

THIS DRAWING COVERS A PROPRIETARY ITEM AND IS THE PROPERTY OF MICRO SWITCH, A DIVISION OF HONEYWELL. THIS DRAWING IS NOT TO BE COPIED OR USED WITHOUT THE APPROVAL OF MICRO SWITCH.

THIRD ANGLE PROJECTION

SCALE 2 TO 1

DO NOT SCALE PRINT

UNLESS OTHERWISE SPECIFIED TOLERANCES ARE

ONE PLACE (.01) ±.030

TWO PLACE (.00) ±.015

THREE PLACE (.000) ±.005

ANGLES ± 5°

WEIGHT

NOTES

- 1 - BLACK PLASTIC CASE AND BLACK PLUNGER
- 2 - FLAG STYLE QUICK CONNECT RECEPTACLE REQUIRED FOR NORMALLY OPEN TERMINAL IF SWITCH IS WIRED BEFORE MOUNTING
- 3 - NOMINAL CUTOUT DIMENSION FOR PANELS BETWEEN .045 AND .100 SHOULD BE INTERPOLATED BETWEEN 1.115 AND 1.125
- 4 - PUSH TO OPERATE - MOMENTARY, PULL TO OPERATE - MAINTAINED
- 5 - SWITCH HAS GOLD ALLOY CONTACTS

ANSI Y14.5M-1982 APPLIES

CATALOG LISTING 1DM437
 ISSUE 6
 REVISIONS
 A 10/28/82
 6 JAN 83
 CHECK
 CHECK
 CHECK
 CHECK
 DDN/CAD
 DRAWN
 J.W.B. 6 JAN 93
 CHECK

CHARACTERISTICS	ELECTRICAL DATA
OPERATING FORCE - - - - - 15 OZ MAX	CONTACT ARRANGEMENT S P D T
	L22 1A 125 VAC

