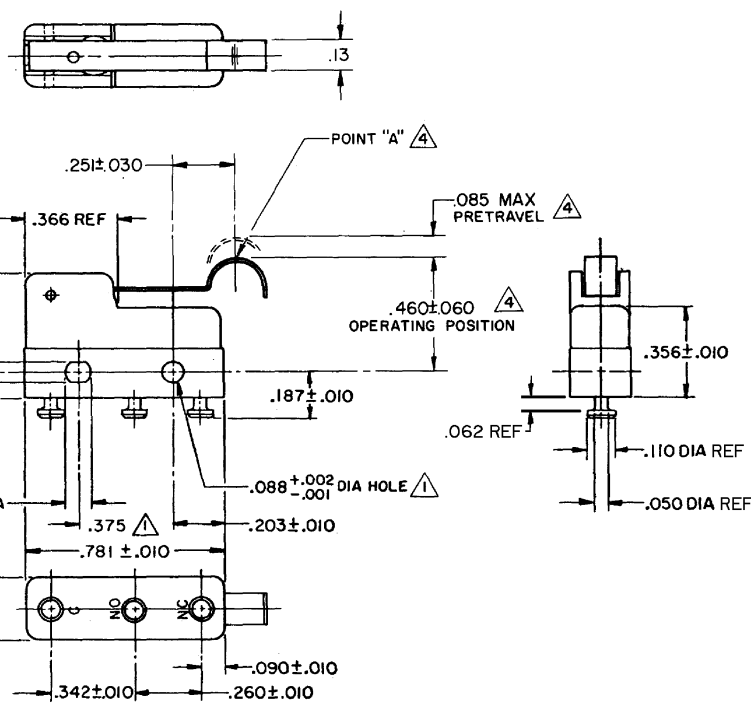


FO-55111-A

HONEYWELL  
PART NUMBER  
311SM4-T  
PRODUCT CODE  
TZA1250

REV	DOCUMENT	CHANGED BY	CHECK
7	0038113	PRS 12JUN08	BLR



NOTE -  
 ⚠ MOUNTING HOLES WILL ACCEPT PINS OR SCREWS OF .087 MAX DIA ON .375±.002 CENTERS  
 2- SWITCH WILL WITHSTAND TEMPERATURE OF 250°F  
 3- TERMINALS ARE PLATED FOR SOLDERING  
 ⚠ CHARACTERISTICS TAKEN AT POINT "A"

RELEASE NO. SR - 11750  
 REPLACES

CHARACTERISTICS	4
OPERATING FORCE	-- 40 GRAM MAX
RELEASE FORCE	-- 7 GRAM MIN
DIFFERENTIAL TRAVEL	-- .019 MAX
OVERTRAVEL	----- .018 MIN

ELECTRICAL DATA	
CONTACT ARRANGEMENT S P D T	
30 VOLTS DC RATING	
INDUCTIVE	3 AMP 50,000 FT
RESISTIVE	5 AMP 2.5 AMP
MAXIMUM INRUSH 24 AMP	
APPROVALS	
KEMA CE	5A, 250V ~ T85 1E4
UL CSA	5A, 250 VAC ~

DESIGN UNITS: INCH
TOLERANCES UNLESS NOTED:
NO PLACE .X ± 0.030
ONE PLACE .XX ± 0.015
TWO PLACE .XXX ± 0.005
THREE PLACE .XXXX ±
FOUR PLACE .XXXX ±
ANGLES ±
THIRD ANGLE PROJECTION

DRAWN	VK	05 NOV 07
CHECK	RJ	05 NOV 07
THIS DRAWING COVERS A PROPRIETARY ITEM AND IS THE PROPERTY OF HONEYWELL. THIS DRAWING IS NOT TO BE COPIED OR USED WITHOUT THE PERMISSION OF HONEYWELL.		
INTERPRET PER ANSI Y14.5M-1982 OTHER HONEYWELL ENGINEERING STANDARDS MAY APPLY		
RASTER		

<b>Honeywell</b>			
TITLE SWITCH - BASIC			
SIZE	TYPE	DRAWING NAME	REV
B	I	311SM4-T	7
SCALE	-	WEIGHT .006 LB MAX	SHEET 1 OF 1

4

3

2

1