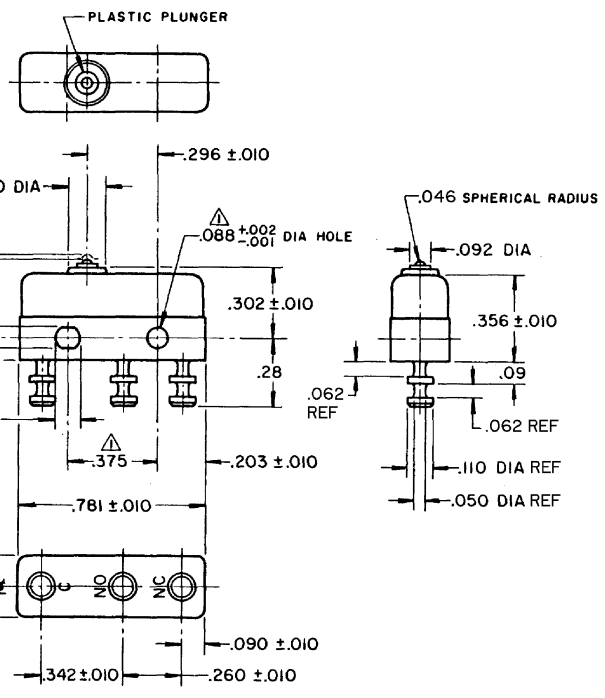


FO-55111-A

HONEYWELL PART NUMBER
11SM1-T2
PRODUCT CODE
TWT0180
JG-80182

REV	DOCUMENT	CHANGED BY	CHECK
11	0038090	VS 28APR08	BLR



**NOTE -**  
 ▲ - MOUNTING HOLES WILL ACCEPT PINS OR SCREWS OF .087 MAX DIA ON .375 ±.002 CENTERS  
 2 - TERMINALS ARE PLATED FOR SOLDERING

RELEASE NO.	-
REPLACES	-

<b>CHARACTERISTICS</b> OPERATING FORCE - - - - 3 - 5 OZ RELEASE FORCE - - - - 1 OZ MIN DIFFERENTIAL TRAVEL - - .004 MAX OVERTRAVEL - - - - .005 MIN	<b>ELECTRICAL DATA</b> CONTACT ARRANGEMENT S P D T 30 VOLTS DC RATING SEA LEVEL 50,000 FT INDUCTIVE 3 AMP 2.5 AMP RESISTIVE 5 AMP 5 AMP MAXIMUM INRUSH 24 AMP APPROVALS KEMA CE 5A, 250V ~ T85 1E4 UL CSA 5A, 250 VAC ~	DESIGN UNITS: INCH TOLERANCES UNLESS NOTED: NO PLACE .X ± ONE PLACE .X ± TWO PLACE .XX ± THREE PLACE .XXX ± FOUR PLACE .XXXX ± ANGLES ± THIRD ANGLE PROJECTION	DRAWN VK 29 NOV 07 CHECK RJ 29 NOV 07	<b>Honeywell</b> TITLE SWITCH - BASIC
			THIS DRAWING COVERS A PROPRIETARY ITEM AND IS THE PROPERTY OF HONEYWELL. THIS DRAWING IS NOT TO BE COPIED OR USED WITHOUT THE PERMISSION OF HONEYWELL. INTERPRET PER ANSI Y14.5M-1982 OTHER HONEYWELL ENGINEERING STANDARDS MAY APPLY. RASTER	