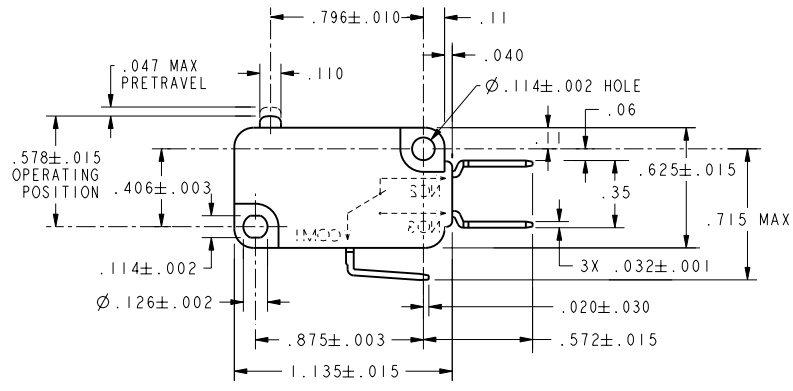
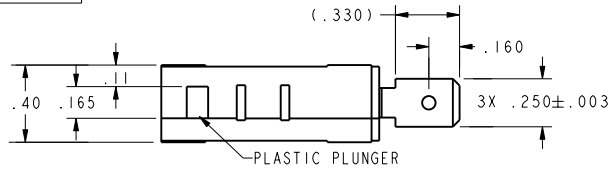


CW-B9725

REV	DOCUMENT	CHANGED BY	CHECK
3	203276	TSM 15JUN01	SAV
4	207443	TSM 17FEB03	SAV



NOTES
 1 - MAXIMUM MECHANICAL DEAD BREAK OF .0025 MAY BE EXPECTED WITH THIS SWITCH CONSTRUCTION

CHARACTERISTICS		ELECTRICAL DATA		UNLESS OTHERWISE SPECIFIED TOLERANCES ARE:		DRAWN	TSM	15JUN01	Honeywell	
OPERATING FORCE	--- 225 GRAMS MAX	CONTACT ARRANGEMENT	S P D T	NO PLACE	X ±.040 ±1	CHECK	SAV	15JUN01	THIS DRAWING COVERS A PROPRIETARY ITEM AND IS THE PROPERTY OF HONEYWELL. THIS DRAWING IS NOT TO BE COPIED OR USED WITHOUT THE PERMISSION OF HONEYWELL.	
RELEASE FORCE	----- 20 GRAMS MIN	25A, 277 VAC		ONE PLACE	.X ±.030 ±0,4	DIMENSIONS ARE TO BE MET BEFORE PROTECTIVE COATINGS ARE APPLIED				
DIFFERENTIAL TRAVEL	---- .010 MAX	1HP, 125 VAC		TWO PLACE	.XX ±.015 ±0,15	PTC 2D		ASME Y14.5M-1994	SCALE	2:1
OVERTRAVEL	----- .050 MIN	2HP, 250 VAC		THREE PLACE	.XXX ±.005 ±	SIZE		B	DWG TYPE	I
FREE POSITION	----- .625 MAX			ANGLES	± ±	DRAWING NAME		V7-IZ19E9		REV
RELEASE TRAVEL	----- .010 MIN			RAW MATERIAL-COMMERCIAL STANDARD	± ±	SHEET		1 OF 1		4

