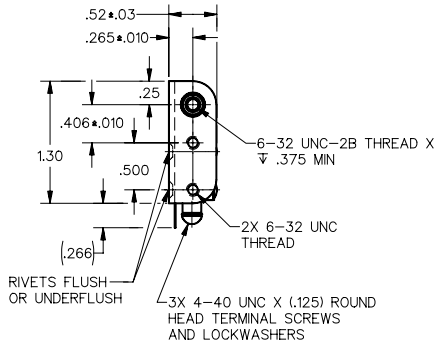


**MICRO SWITCH**  
a Honeywell Division  
FED. MFG. CODE 91924

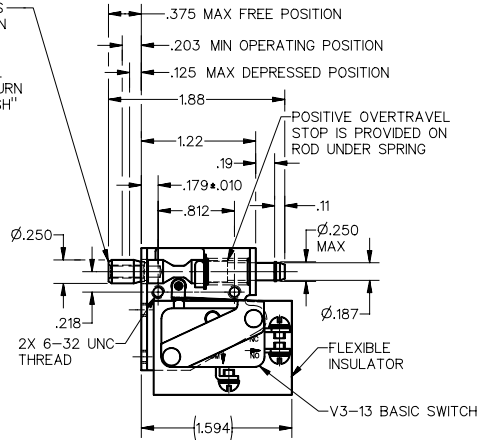
**ASSEMBLY-SWITCH**

CATALOG LISTING  
**2AC6**  
KC-B0060

CATALOG LISTING 2AC6  
 ISSUE 15  
 PAGE 1 OF 1  
 REVISIONS  
 A 10/21/82  
 J SEP 88  
 DDW/CAD  
 DRAWN  
 K D R 7 SEP 90  
 CHECK  
 REFERENCE NO.



PUSH TO OPERATE--RETURNS AUTOMATICALLY TO POSITION SHOWN  
 PULL TO OPERATE--REMAINS IN OPERATED POSITION UNTIL RESET FOR AUTOMATIC RETURN BY NEXT FULL STROKE "PUSH" OPERATION



THIS DRAWING COVERS A PROPRIETARY ITEM AND IS THE PROPERTY OF MICRO SWITCH, A DIVISION OF HONEYWELL. THIS DRAWING IS NOT TO BE COPIED OR USED WITHOUT THE APPROVAL OF MICRO SWITCH

THIRD ANGLE PROJECTION

CHARACTERISTICS	
TOTAL TRAVEL	.250 APPROX PUSH DIRECTION .187 APPROX PULL DIRECTION
FULLY DEPRESSED FORCE---	4 LBS MAX

ELECTRICAL DATA	
CONTACT ARRANGEMENT	
S P D T	
15.1A 1/2HP 125, 250 VAC	
1/2A 125 VDC, 1/4A 250 VDC	
5A 125 VAC "L"	

SCALE	FULL
DO NOT SCALE PRINT	
UNLESS OTHERWISE SPECIFIED TOLERANCES ARE	
ONE PLACE (.0)	±.030
TWO PLACE (.00)	±.015
THREE PLACE (.000)	±.005
ANGLES	±
WEIGHT	

- NOTES
- 1 - NOTCH IN ACTUATOR ROD WILL PERMIT .035 DISPLACEMENT BETWEEN END OF ROD AND HOLE IN BRACKET
  - 2 - PLASTIC PARTS ARE MADE OF MINERAL FILLED PHENOLICS
  - 3 - WITH ROD IN EITHER ACTUATED POSITION, BASIC SWITCH PLUNGER MUST HAVE .010 MIN OVERTRAVEL AND WITH ROD IN FREE POSITION BASIC SWITCH PLUNGER MUST HAVE .005 MIN RELEASE TRAVEL

ANSI Y14.5M-1982 APPLIES