

MICRO SWITCH
 FREEPORT ILLINOIS, U.S.A
 A DIVISION OF HONEYWELL
 FED. MFG. CODE 91929

SWITCH-BASIC

CATALOG LISTING
BA-2R-A4

ABF5000

BA-2R-A4
 PAGE 1 OF 1

M

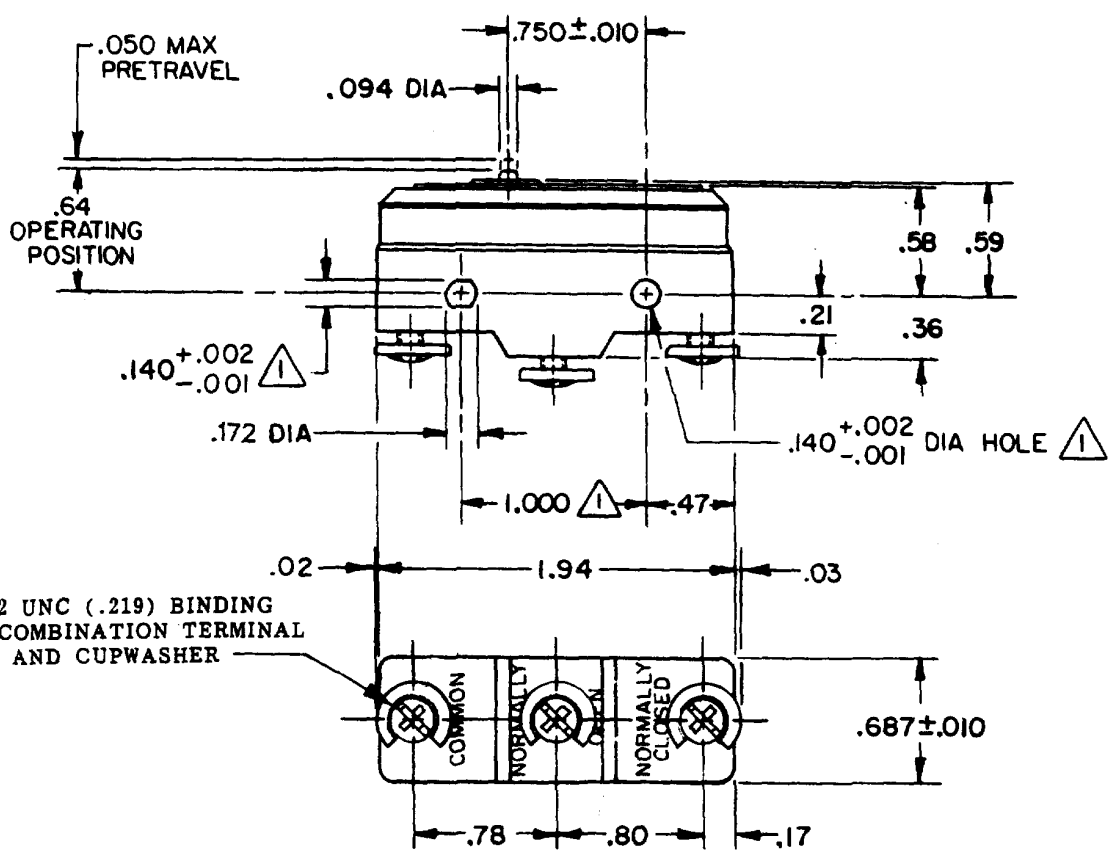
DRAWING NUMBER

ISSUE **10**

REVISIONS

A	OBS DWG	27 JUN 86
B	PR-14878 RE-INST	28 JUN 86
C	CO88010	
D	J A 73287-9	20 OCT 93
E	CO-77588	28 MAR 94
F	CO93346	
G	DLT 0018656	23 SEP 98
	NM 20FEB06	

RELEASE NO. PR-14878
 CHECK
 20FEB06
 RJ
 CHECK
 20FEB06
 28 JUN 86
 28 JUN 94
 23 SEP 98
 20FEB06



3X 8-32 UNC (.219) BINDING HEAD COMBINATION TERMINAL SCREW AND CUPWASHER

NOTES
 1 MOUNTING HOLES WILL ACCEPT PINS OR SCREWS OF .139 MAX DIA ON 1.000±.002 CENTERS

THIS DRAWING COVERS A PROPRIETARY ITEM AND IS THE PROPERTY OF MICRO SWITCH, A DIVISION OF HONEYWELL. THIS DRAWING IS NOT TO BE COPIED OR USED WITHOUT THE APPROVAL OF MICRO SWITCH.

THIRD ANGLE PROJECTION

CHARACTERISTICS

OPERATING FORCE	-----14-22 OZ
RELEASE FORCE	-----10 OZ MIN
DIFFERENTIAL TRAVEL	---.0020-.0075
OVERTRAVEL	-----.010 MIN

ELECTRICAL DATA

CONTACT ARRANGEMENT
 S P D T

L145 20A 125, 250 OR 480 VAC
 10A 125 VAC "L"
 1 HP 125 VAC, 2 HP 250 VAC
 1/2A 125 VDC, 1/4A 250 VDC
 2A 600 VAC

L288
 L308
 L315

20(3)A 250V T85 5E4

SCALE FULL

DO NOT SCALE PRINT

TOLERANCES
 APPLY TO DESIGN UNITS. CONVERSIONS ARE ONLY FOR REFERENCE. UNLESS NOTED, TOLERANCES ARE 2

DES. PLACES	TOL. mm	DES. PLACES	TOL. in
NO PLACES	X	X	0.0750
ONE PLACE	X.X	X.X	0.4/018
TWO PLACES	X.XX	X.XX	0.38/015
THREE PLACES	X.XXX	X.XXX	0.13/006

DESIGN UNITS METRIC US CUSTOMARY

WEIGHT .063 LB

FORMTEK
 FO-52848-A
 DRAWN