



# MICRO SWITCH

FREEPORT, ILLINOIS, U.S.A.  
A DIVISION OF HONEYWELL

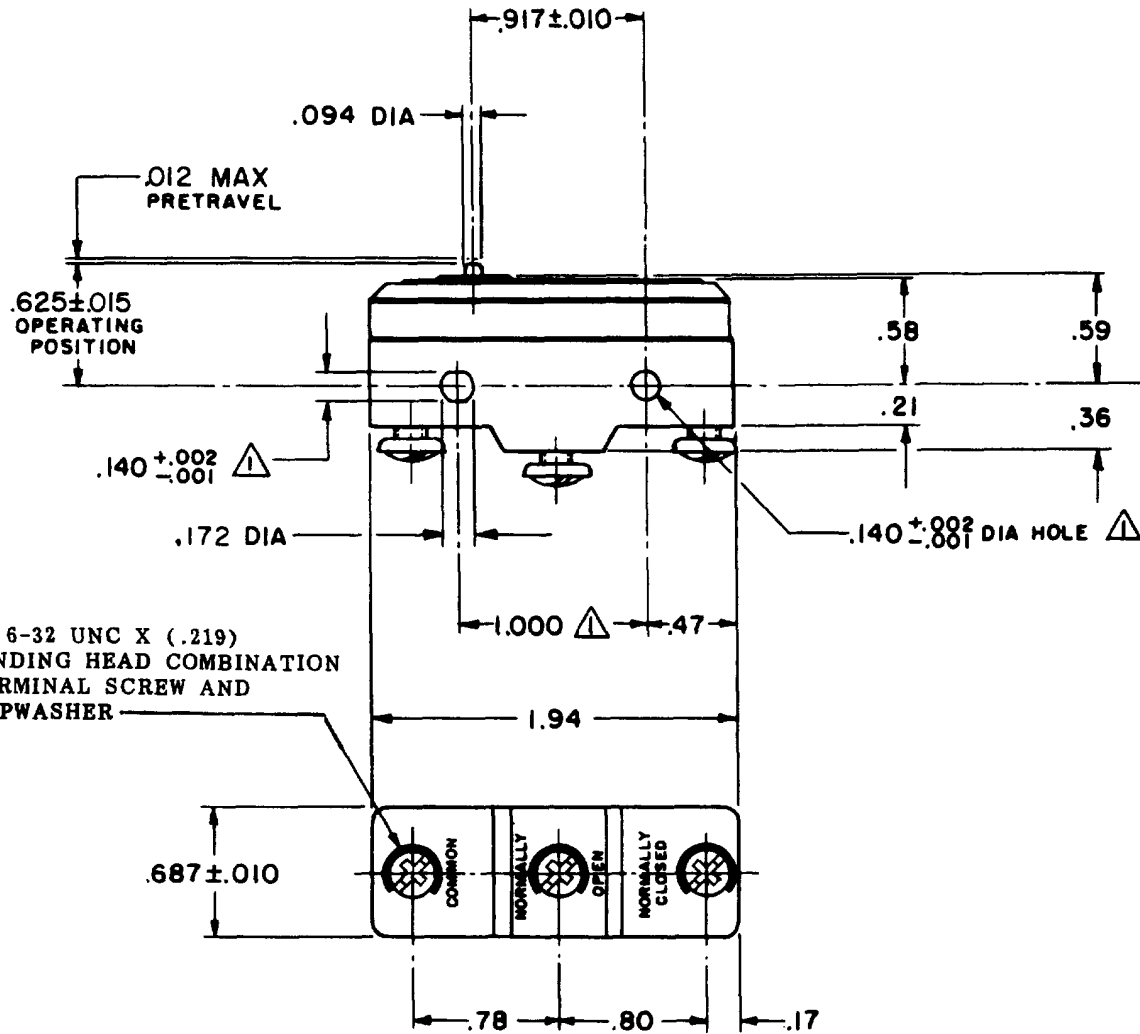
FED. MFG. CODE 91929

# SWITCH-BASIC

CATALOG LISTING

# BZ-R88-A2

CATALOG LISTING  
**BZ-R88-A2**  
 PAGE 1 OF 1  
 REPLACES  
 RELEASE NO.  
 CHECK  
 REVISIONS  
 A CO15200  
 7 FEB 66  
 B CO-73287-J  
 22 NOV 93  
 C CO-77589  
 30 MAR 94  
 D 203222  
 5 JUN 01  
 CHECK  
 WAFB CG  
 LSD  
 CHECK  
 FEB 66  
 RLD 7 FEB 66  
 DRAWN  
 RLD 7 FEB 66  
 RASTER  
 FO-90378



NOTE -  
 △ - MOUNTING HOLES WILL ACCEPT PINS OR SCREWS OF .139 MAX DIA ON 1.000 ± .002 CENTERS

THIS DRAWING COVERS A PROPRIETARY ITEM AND IS THE PROPERTY OF MICRO SWITCH, A DIVISION OF HONEYWELL. THIS DRAWING IS NOT TO BE COPIED OR USED WITHOUT THE APPROVAL OF MICRO SWITCH.

### CHARACTERISTICS

OPERATING FORCE ----- 9 OZ MAX  
 RELEASE FORCE ----- 3 OZ MIN  
 DIFFERENTIAL TRAVEL ----- .0007 MAX  
 OVERTRAVEL ----- .005 MIN

### ELECTRICAL DATA

CONTACT ARRANGEMENT  
 S P D T

L8 10A 125, 250 OR 480 VAC

L288



SCALE FULL

DO NOT SCALE PRINT

UNLESS OTHERWISE NOTED

DIMENSIONS ARE IN INCHES

TOLERANCES ARE:

ONE PLACE (.0) ± .030  
 TWO PLACE (.00) ± .015  
 THREE PLACE (.000) ± .005  
 ANGLES ±

WEIGHT .060 LB

**MICRO SWITCH**FREEPORT, ILLINOIS, U.S.A.  
A DIVISION OF HONEYWELL

FED. MFG. CODE 91929

**SWITCH-BASIC**

CATALOG LISTING

**BZ-R88-A2****BZ-R88-A2****M**DRAWING  
NUMBER

ISSUE

5

REPLACES

RELEASE NO.

CHECK

CHECK

CHECK

CHECK

CHECK

CHECK

CHECK

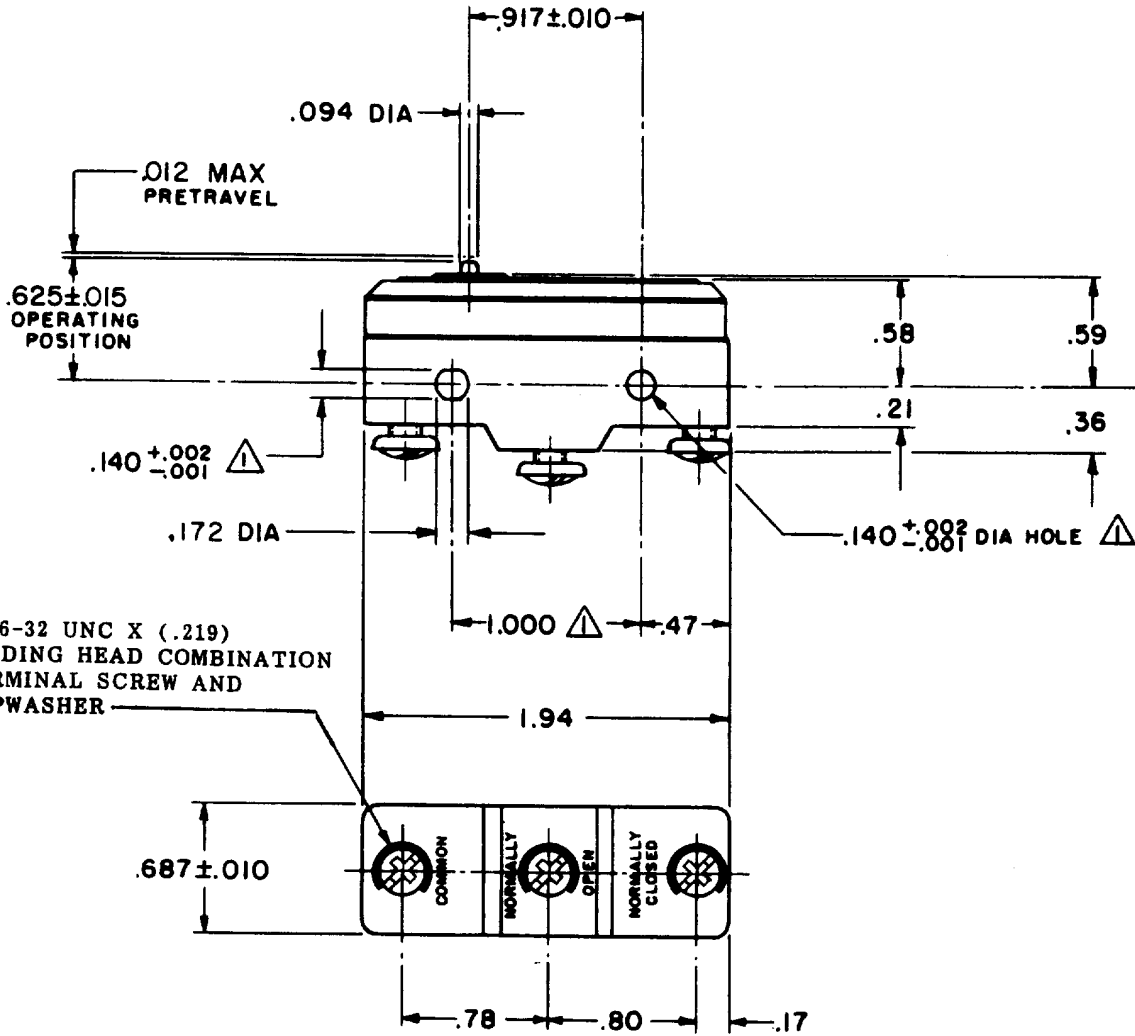
CHECK

CHECK

## REVISIONS

A	CO15200
7	FEB 66
B	CO-73287-J
22	NOV 93
C	CO-77589
30	MAR 94

FO-50378



NOTE -  
 - MOUNTING HOLES WILL ACCEPT PINS OR SCREWS OF .139 MAX DIA ON 1.000 ± .002 CENTERS

THIS DRAWING COVERS A PROPRIETARY ITEM AND IS THE PROPERTY OF MICRO SWITCH, A DIVISION OF HONEYWELL. THIS DRAWING IS NOT TO BE COPIED OR USED WITHOUT THE APPROVAL OF MICRO SWITCH.

**CHARACTERISTICS**

OPERATING FORCE ----- 9 OZ MAX  
 RELEASE FORCE ----- 3 OZ MIN  
 DIFFERENTIAL TRAVEL ----- .0007 MAX  
 OVERTRAVEL ----- .005 MIN

**ELECTRICAL DATA**

CONTACT ARRANGEMENT  
 S P D T  
 UNDERWRITERS' LAB. INC. LISTED RATING  
 -L B- 10 A-125, 250 OR 480 VAC



SCALE FULL

DO NOT SCALE PRINT

UNLESS OTHERWISE NOTED

DIMENSIONS ARE IN INCHES

**TOLERANCES ARE:**

ONE PLACE (.9) ± .030  
 TWO PLACE (.001) ± .018  
 THREE PLACE (.000) ± .008  
 ANGLES ±

WEIGHT .060 LB