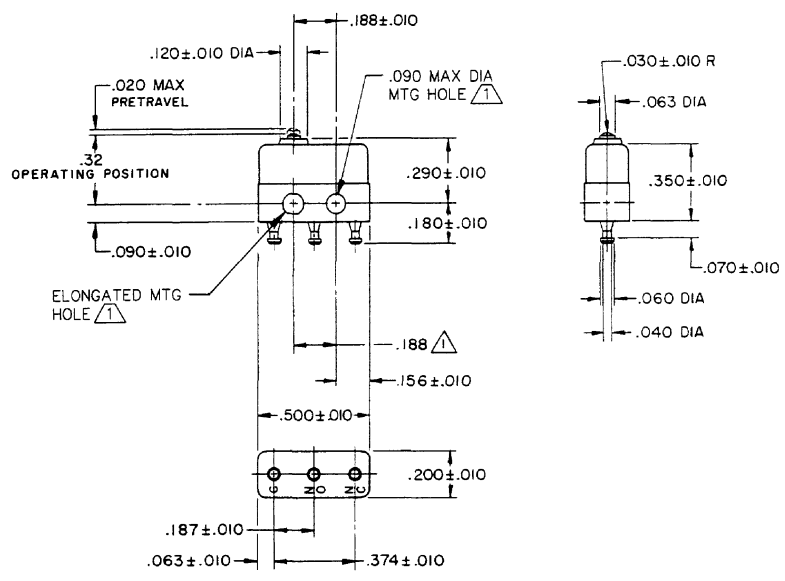
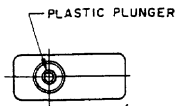


FO-55111-A

HONEYWELL  
PART NUMBER  
11SX21-T  
PRODUCT CODE  
VDJ2100

REV	DOCUMENT	CHANGED BY	CHECK
11	0038448	VS 28APR08	BLR



- NOTES**
- 1 MOUNTING HOLES WILL ACCEPT PINS OR SCREWS OF .087 MAX DIA ON .188±.002 CENTERS
  - 2 - TERMINALS ARE PLATED FOR SOLDERING
  - 3 - SWITCH WILL WITHSTAND TEMPERATURE OF 250 ° F

RELEASE NO.	PR-862
REPLACES	

CHARACTERISTICS	ELECTRICAL DATA	DESIGN UNITS: INCH TOLERANCES UNLESS NOTED:	DRAWN	SPK	08FEB08	<b>Honeywell</b>
			CHECK	RJ	08FEB08	
OPERATING FORCE - - - 2.5 - 5 OZ	CONTACT ARRANGEMENT S P D T	NO PLACE . X ±	THIS DRAWING COVERS A PROPRIETARY ITEM AND IS THE PROPERTY OF HONEYWELL. THIS DRAWING IS NOT TO BE COPIED OR USED WITHOUT THE PERMISSION OF HONEYWELL.			TITLE
RELEASE FORCE - - - - 1 OZ MIN	28 VOLTS DC RATING 115 VOLTS AC, 60 CPS	ONE PLACE . X ±	INTERPRET PER ANSI Y14.5M-1982 OTHER HONEYWELL ENGINEERING STANDARDS MAY APPLY			SIZE
DIFFERENTIAL TRAVEL - - - .002 MAX	SEA LEVEL 50,000 FT SEA LEVEL	TWO PLACE . XX ±				<b>B</b>
OVERTRAVEL - - - - .004 MIN	INDUCTIVE 3 AMP 2 AMP 5 AMP	THREE PLACE . XXX ±	TYPE	DRAWING NAME	DRAWING NAME	REV
	RESISTIVE 5 AMP 4 AMP 5 AMP	FOUR PLACE . XXXX ±	SCALE	WEIGHT:.003 LB MAX	11SX21-T	11
	APPROVALS	ANGLES ±	RASTER	SHEET	1 OF 1	
	KEMA CE 5A 250 V - T125 5E4	THIRD ANGLE PROJECTION				
	UL CSA 5A 250 VAC					