

MICRO SWITCH

A DIVISION OF MINNEAPOLIS-HONEYWELL REGULATOR COMPANY
 FEDERAL MFR. CODE 91929

SWITCH - BASIC

CATALOG LISTING

BZ-2RW822-A2

APF1500

FAA-PMA

M BZ-2RW822-A2
PAGE 1 OF 1

DRAWING NUMBER

ISSUE 15

RELEASE NO. 13MAY08

ASD

CHECK 13MAY08

Rj

CHECK 23 AUG 05

G CO-77589

MAM 29 MAR 94

M CO-81584

RAG 12 MAY 97

J CO93346

DLT 2 SEP 98

K 0015139

TSG 23 AUG 05

L PK 13MAY08

0039796

DRAWN 17 APR 82

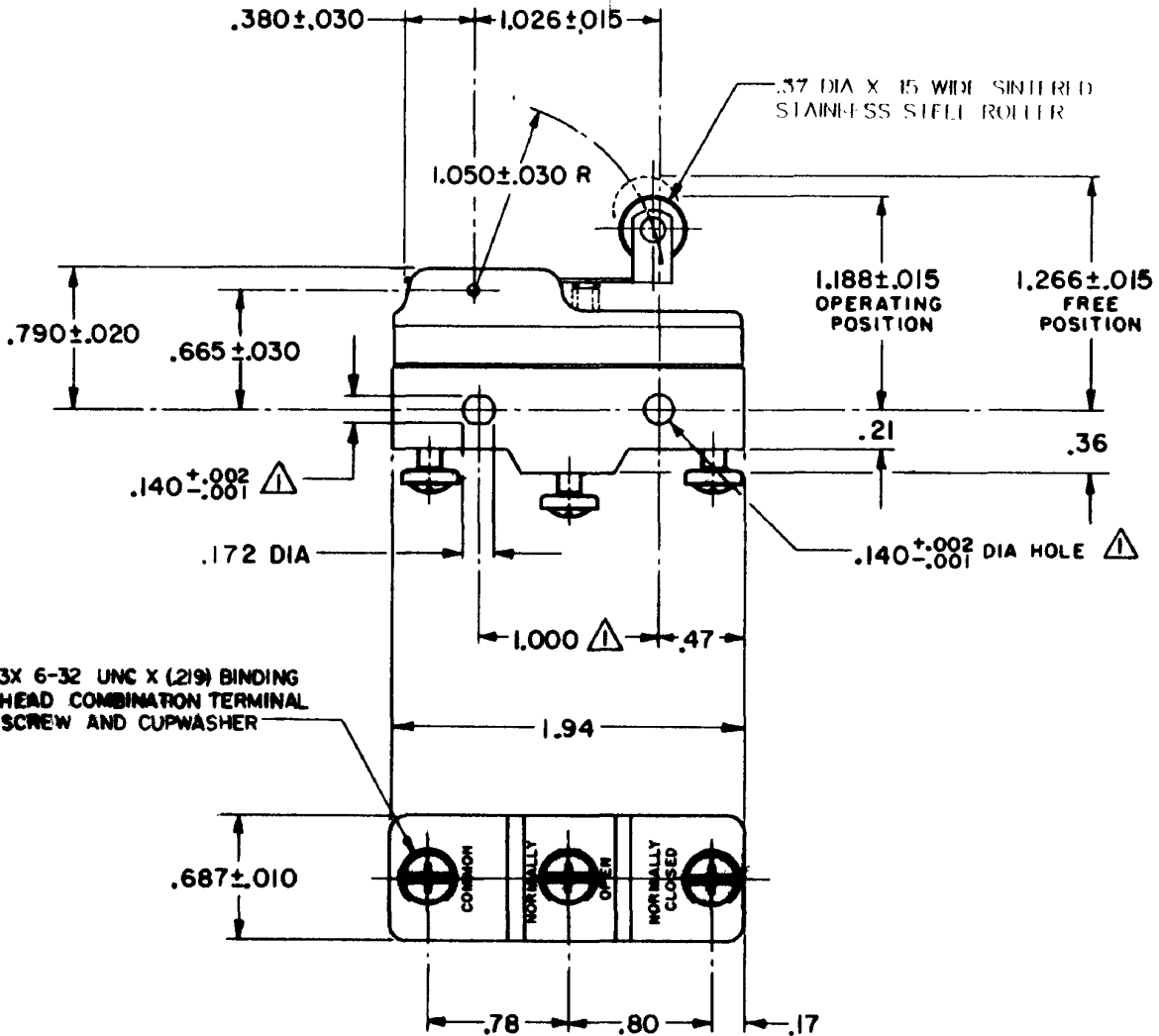
CHECK 5 APRIL 62

GCH

RASTER

DRAWN

FC-80378



NOTE -
 △ - MOUNTING HOLES WILL ACCEPT PINS OR SCREWS OF .139 MAX DIA ON 1.000 ± .002 CENTERS

THIS DRAWING COVERS A PROPRIETARY ITEM AND IS THE PROPERTY OF MICRO SWITCH, A DIVISION OF MINNEAPOLIS-HONEYWELL REGULATOR CO. THIS DRAWING IS NOT TO BE COPIED OR USED WITHOUT THE APPROVAL OF MICRO SWITCH.

CHARACTERISTICS	ELECTRICAL DATA	SCALE -
OPERATING FORCE ----- 6 OZ MAX	CONTACT ARRANGEMENT S P D T	DO NOT SCALE PRINT
RELEASE FORCE ----- 1 1/2 OZ MIN	- L74 - 16A-125, 250, OR 400 VAC, 2A-600 WAC	UNLESS OTHERWISE SPECIFIED
DIFFERENTIAL TRAVEL ----- .003 - .020	1/2 A-125 VDC; 1/4 A-250 VDC	DIMENSIONS ARE IN INCHES
OVERTRAVEL ----- .094 MIN	1/8 HP-125 VAC; 1/4 HP-250 VAC	TOLERANCES ARE:
	-L288- CE	ONE PLACE (.0) ±.030
	-L306-	TWO PLACE (.00) ±.015
	-L315-	THREE PLACE (.000) ±.005
	16A 250V ~ T85 5E4	ANGLES ± -
		WEIGHT .076 LB