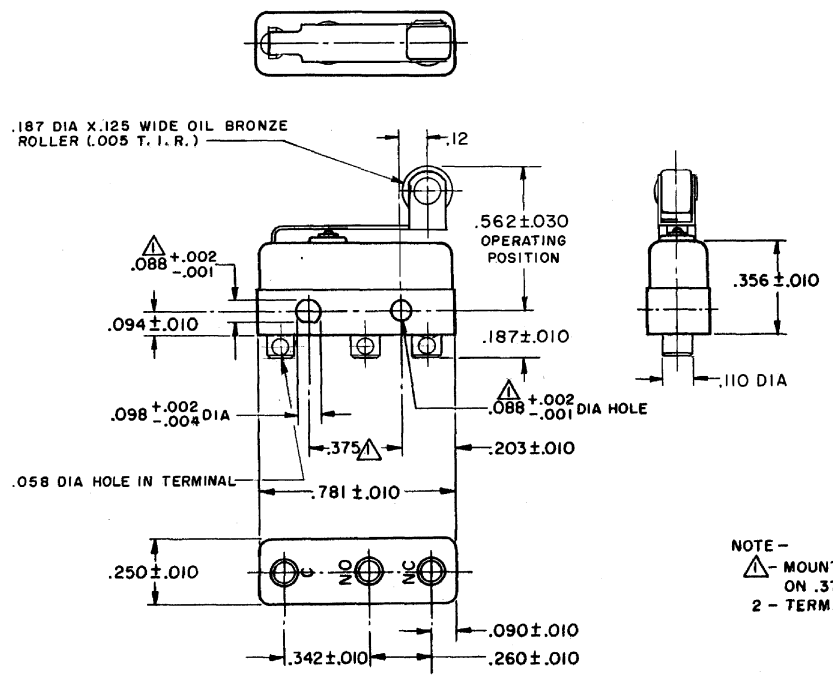


FO-55111-A
 HONEYWELL
 PART NUMBER
111SM2
 PRODUCT CODE
 TYJ0200

| REV | DOCUMENT | CHANGED BY | CHECK |
|-----|----------|-------------|-------|
| 6 | 0038225 | PRS 04APR08 | BLR |



NOTE -
 ▲ - MOUNTING HOLES WILL ACCEPT PINS OR SCREWS OF .087 MAX DIA ON .375 ± .002 CENTERS
 2 - TERMINALS ARE PLATED FOR SOLDERING

| | |
|-------------|-----------|
| RELEASE NO. | SR - 9566 |
| REPLACES | |

| CHARACTERISTICS |
|----------------------------------|
| OPERATING FORCE - - - - 7 OZ MAX |
| RELEASE FORCE - - - - 2 OZ MIN |
| PRETRAVEL - - - - .219 MAX |
| DIFFERENTIAL TRAVEL - - .025 MAX |
| OVERTRAVEL - - - - .030 MIN |

| ELECTRICAL DATA |
|--------------------------------|
| CONTACT ARRANGEMENT S-P-D-T |
| 30 VOLTS DC RATING |
| SEA LEVEL 50,000 FT |
| INDUCTIVE 3 AMP 2.5 AMP |
| RESISTIVE 5 AMP 5 AMP |
| MAXIMUM INRUSH 24 AMP |
| KEMA CE 5A, 250V ~ T85 1E4 |
| UL CSA 5A, 250 VAC ~ |

| DESIGN UNITS: INCH |
|--------------------------|
| TOLERANCES UNLESS NOTED: |
| NO PLACE .X ± |
| ONE PLACE .X ± |
| TWO PLACE .XX ± |
| THREE PLACE .XXX ± |
| FOUR PLACE .XXXX ± |
| ANGLES ± |
| THIRD ANGLE PROJECTION |

| | | |
|--|----|-----------|
| DRAWN | VK | 23 OCT 07 |
| CHECK | RJ | 23 OCT 07 |
| THIS DRAWING COVERS A PROPRIETARY ITEM AND IS THE PROPERTY OF HONEYWELL. THIS DRAWING IS NOT TO BE COPIED OR USED WITHOUT THE PERMISSION OF HONEYWELL. | | |
| INTERPRET PER ANSI Y14.5M-1982 OTHER HONEYWELL ENGINEERING STANDARDS MAY APPLY | | |
| RASTER | | |

| | | | |
|-------------------------|------|--------------------|--------------|
| Honeywell | | | |
| TITLE SWITCH - BASIC | | | |
| SIZE | TYPE | DRAWING NAME | REV |
| B | I | 111SM2 | 6 |
| SCALE | - | WEIGHT .008 LB MAX | SHEET 1 OF 1 |

4 3 2 1