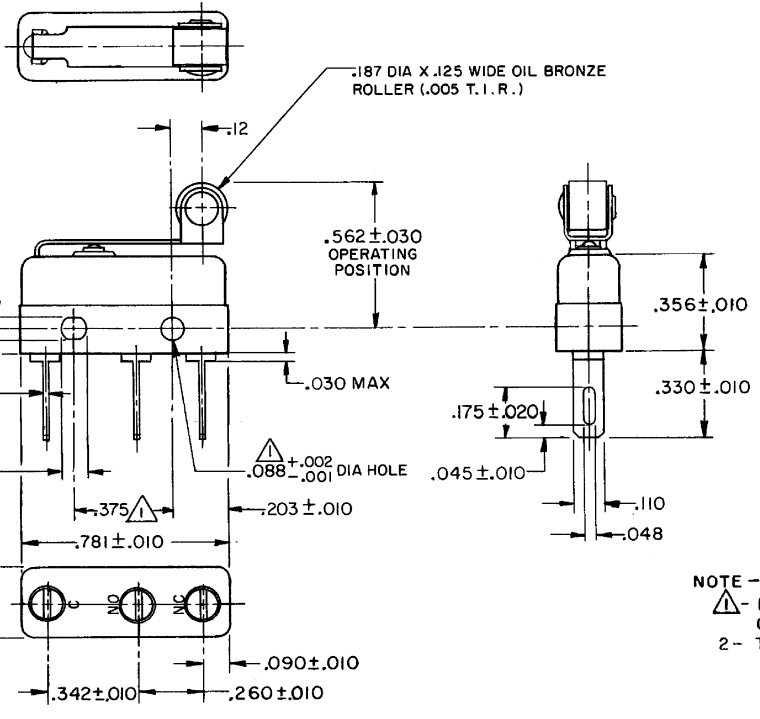


FO-55111-A
 HONEYWELL
 PART NUMBER
111SM602-H4
 PRODUCT CODE
 TYJ9012

REV	DOCUMENT	CHANGED BY	CHECK
8	0038225	PRS 04APR08	BLR



NOTE -
 △ - MOUNTING HOLES WILL ACCEPT PINS OR SCREWS OF .087 MAX DIA ON .375 ± .002 CENTERS
 2 - TERMINALS ARE PLATED FOR SOLDERING

RELEASE NO.	PR - 3451
REPLACES	-

CHARACTERISTICS
OPERATING FORCE - - - - 7 OZ MAX
RELEASE FORCE - - - - 2 OZ MIN
PRETRAVEL - - - - .219 MAX
DIFFERENTIAL TRAVEL - - .025 MAX
OVERTRAVEL - - - - .030 MIN

ELECTRICAL DATA
CONTACT ARRANGEMENT S P D T
30 VOLTS DC RATING
SEA LEVEL 50,000 FT
INDUCTIVE 3 AMP 2.5 AMP
RESISTIVE 5 AMP 5 AMP
MAXIMUM INRUSH 24 AMP
KEMA CE 5A, 250V ~ T85 1E4
UL CSA 5A, 250 VAC

DESIGN UNITS: INCH
TOLERANCES UNLESS NOTED:
NO PLACE .X ±
ONE PLACE .X ±
TWO PLACE .XX ±
THREE PLACE .XXX ±
FOUR PLACE .XXXX ±
ANGLES ±
THIRD ANGLE PROJECTION

DRAWN	VK	29 OCT 07
CHECK	RJ	29 OCT 07
THIS DRAWING COVERS A PROPRIETARY ITEM AND IS THE PROPERTY OF HONEYWELL. THIS DRAWING IS NOT TO BE COPIED OR USED WITHOUT THE PERMISSION OF HONEYWELL.		
INTERPRET PER ANSI Y14.5M-1982 OTHER HONEYWELL ENGINEERING STANDARDS MAY APPLY		
RASTER		

Honeywell			
TITLE SWITCH - BASIC			
SIZE	TYPE	DRAWING NAME	REV
B	I	111SM602-H4	8
SCALE	-	WEIGHT .008 LB MAX	SHEET 1 OF 1